

Best of both worlds: Simultaneous high-light and shade-tolerance adaptations within individual leaves of the living stone *Lithops aucampiae*

Katie J. Field, Rachel George, Brian Fearn, W. Paul Quick and Matthew P. Davey

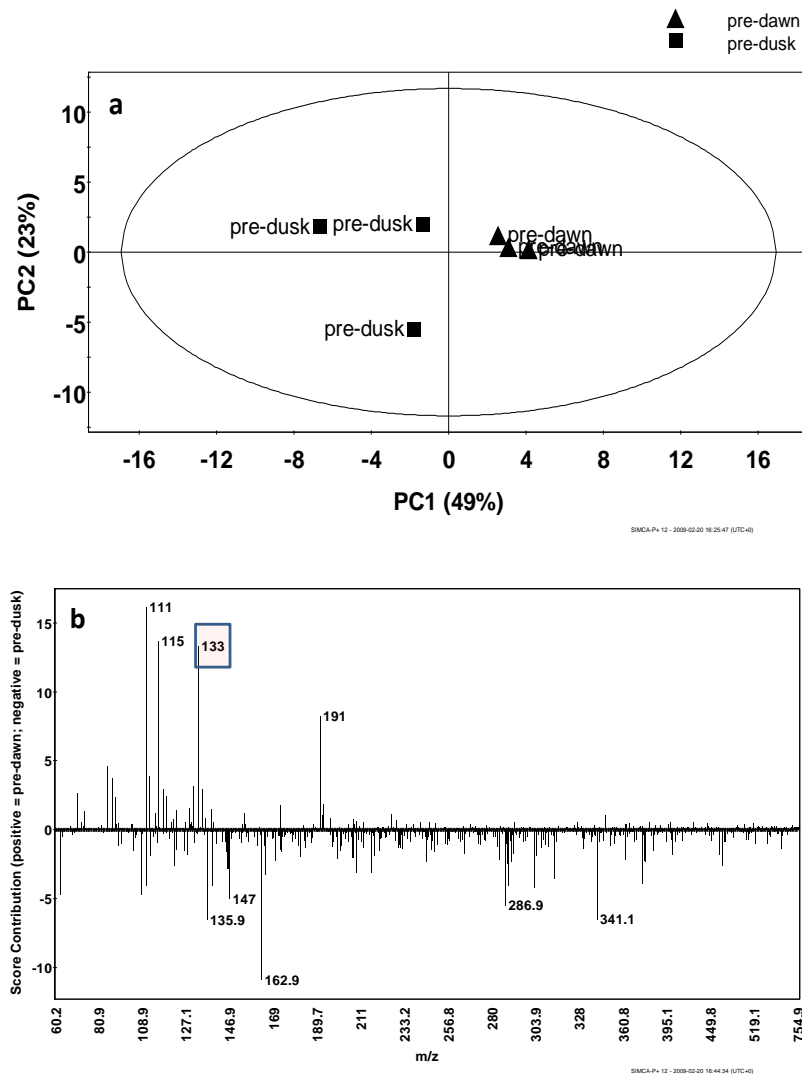


Figure S1. Principal component analysis (PCA) score scatter plot (a) of the metabolic fingerprinting data (direct injection mass spectrometry m/z values) obtained from *Lithops aucampiae* sampled at pre-dusk and pre-dawn. The percent of the variation explained by each component is given. (b) molecular mass ions (m/z) differing the most between pre-dusk and pre-dawn samples. The molecular weight of malate is highlighted.