

**Responses of phyto- and zooplankton communities to *Prymnesium polylepis* (Prymnesiales) bloom in the Baltic Sea**

Elena Gorokhova, Susanna Hajdu and Ulf Larsson

**Figure S3. Zooplankton taxa showing strong deviations between the study years (2007 vs. 2008) at stns B1 (A), BY31 (B), BY15 (C), BY5 (D) and BY2 (E) in the Baltic proper.** Bars show the difference for the entire year (January-December) between year 2008 and year 2007; numbers over the bars at the highest and lowest range indicate values that lie outside the scale on the Y-axis. Note the differences in Y-axis scale among the panels.

Difference between years 2008 and 2007 (abundance,  $\times 10^3 \text{ m}^{-3}$ )

**B 1**

*Temora stylifera*

*Acartia* spp.

*Radiosperma*

polychaete larvae

*Centropages hamatus*

*Evadne nordmanni*

*Bosmina maritima*

*Pleopis* spp.

*Limnocalanus macrurus*

*Tininnopsis* spp.

*Leptointinnus* spp.

*Eurytemora affinis*

*Pseudocalanus acuspes*

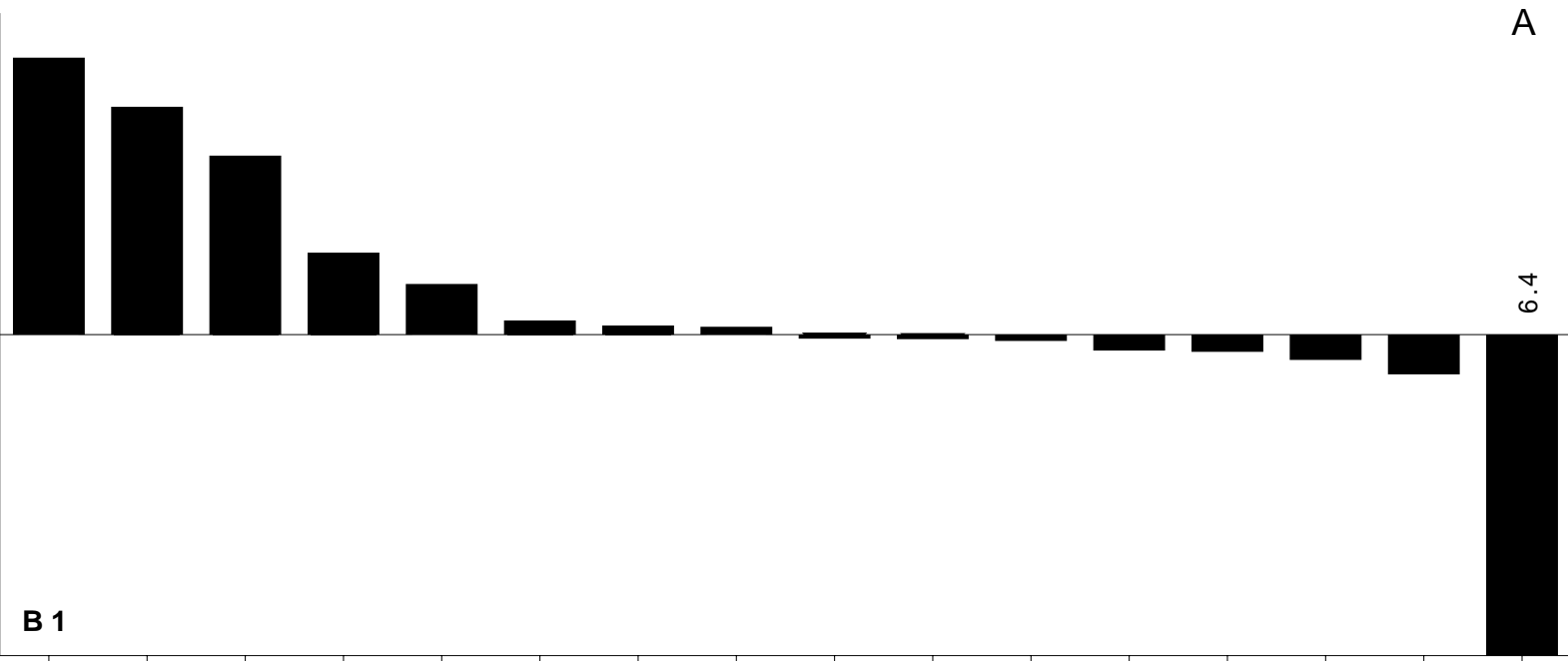
*Fritillaria borealis*

*Keratella* spp.

*Synchaeta* spp.

6.4

A



Difference between years 2008 and 2007 (abundance,  $\times 10^3 \text{ m}^{-3}$ )

**BY31**

*Acartia* spp.

*Temora stylifera*

*Pseudocalanus acuspes*

*Centropages hamatus*

*Radiosperma*

*Evadne nordmanni*

*Podon* spp.

*Tintinnopsis* spp.

*Bosmina maritima*

*Eurytemora affinis*

*Limnocalanus macrurus*

*Keratella* spp.

polychaete larvae

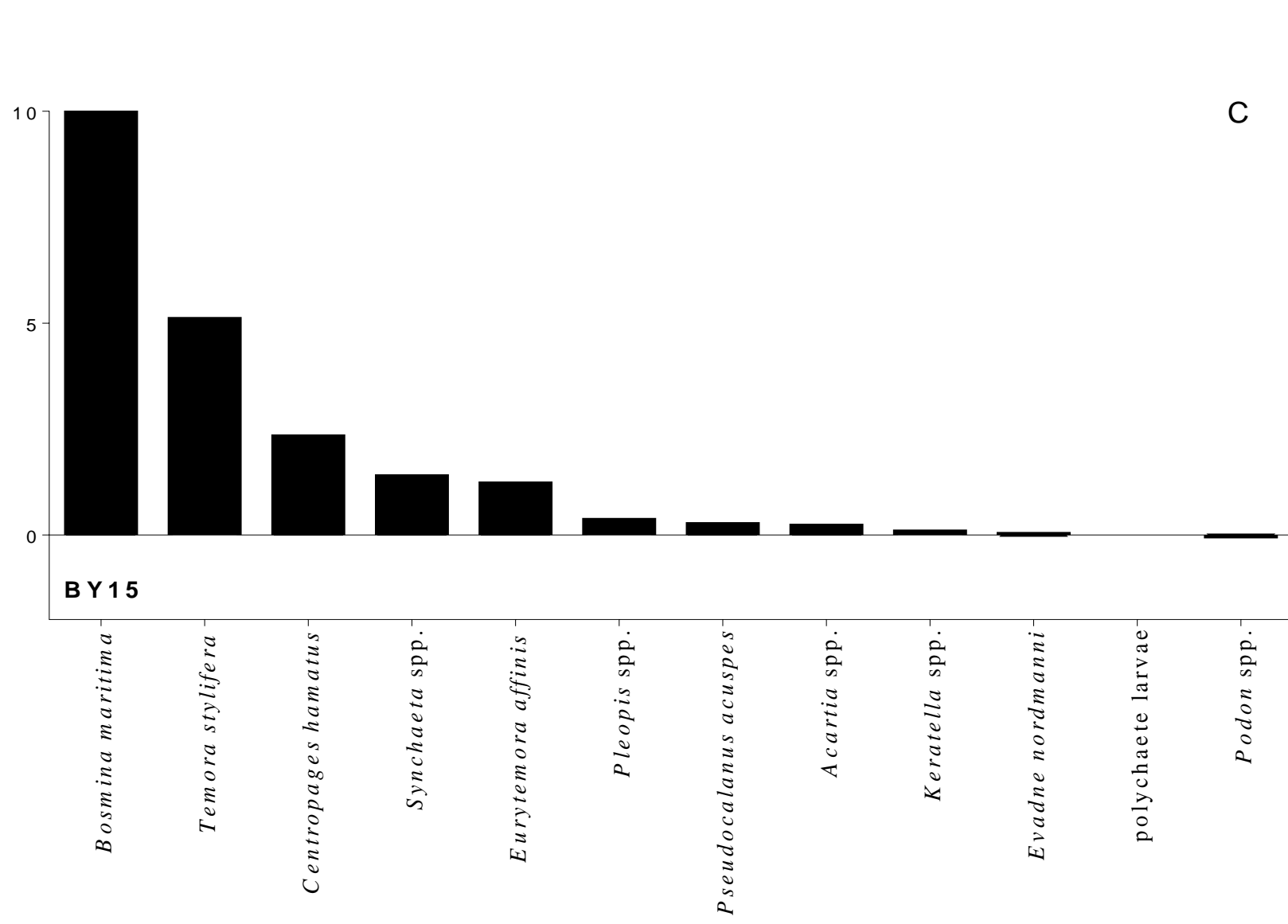
*Synchaeta* spp.

3.5

**B**

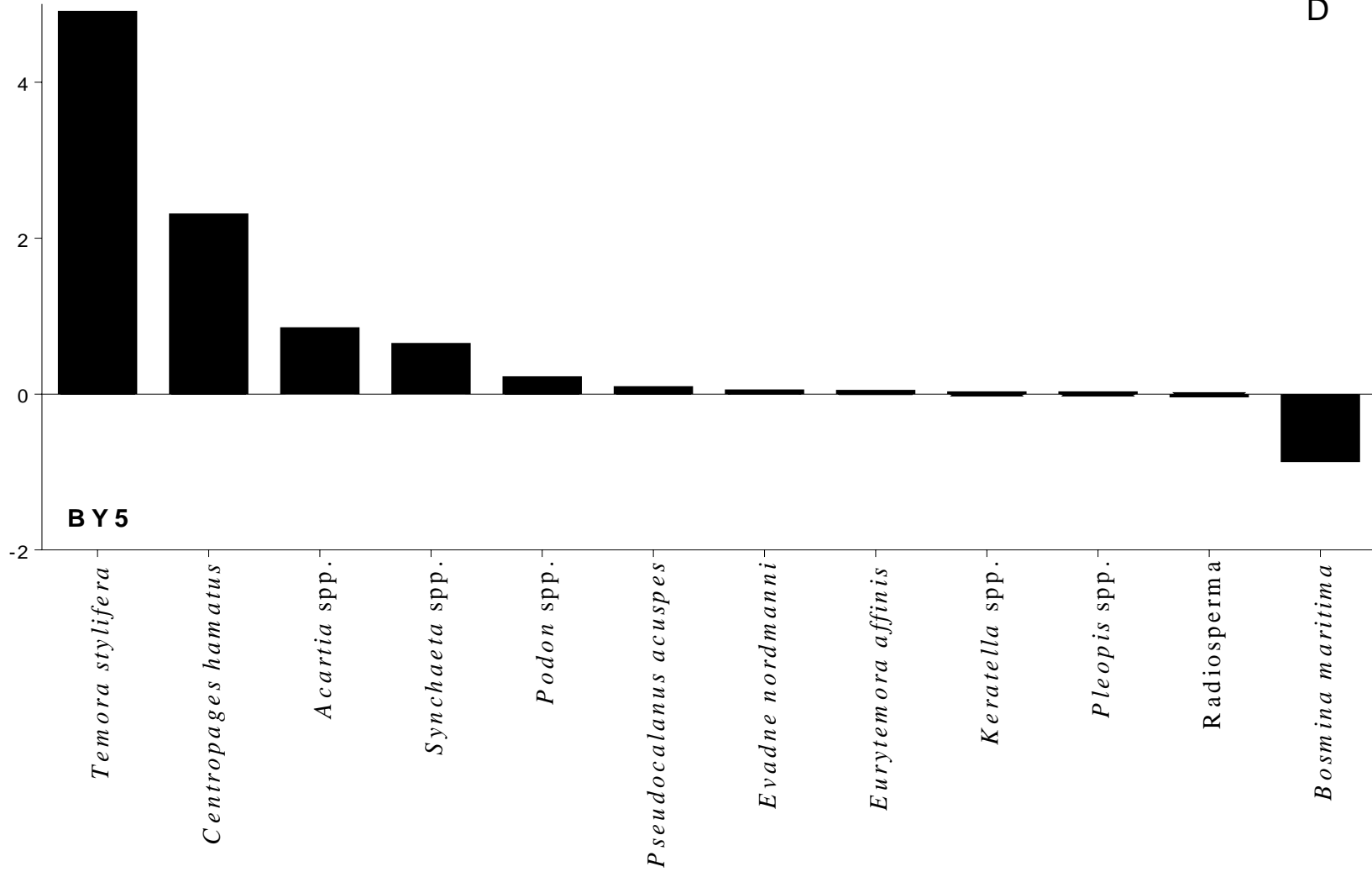


Difference between years 2008 and 2007 (abundance,  $\times 10^3 \text{ m}^{-3}$ )



C

Difference between years 2008 and 2007 (abundance,  $\times 10^3 \text{ m}^{-3}$ )



Difference between years 2008 and 2007 (abundance,  $\times 10^3 \text{ m}^{-3}$ )

