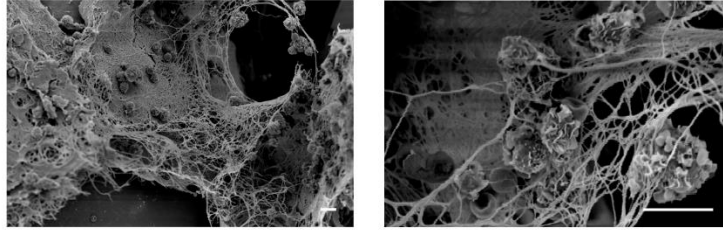
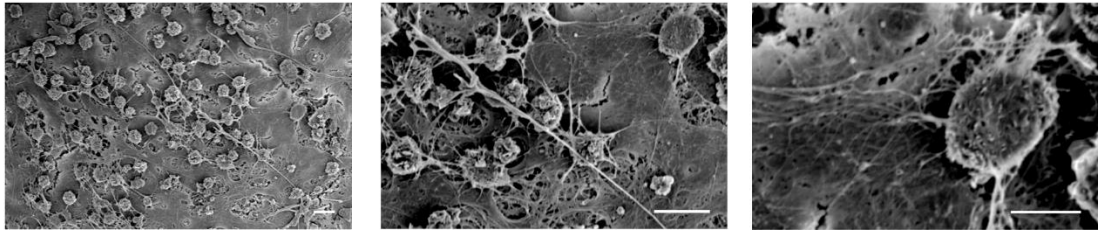


Scanning Electron Micrographs

Polystyrene



PMMA



S3 Figure: Neutrophil extracellular traps (SEM). Scanning electron micrographs of polystyrene and PMMA microcapsules retrieved 3 days following implantation in male C57BL/6J mice. Long, thin fibers are observed on the surface of the microcapsules that could potentially be part of neutrophil extracellular traps. Scale bars on images are 5 μm , except for PMMA extreme right (1 μm) image. Images are representative of 2 independent experiments with $n \geq 5$.