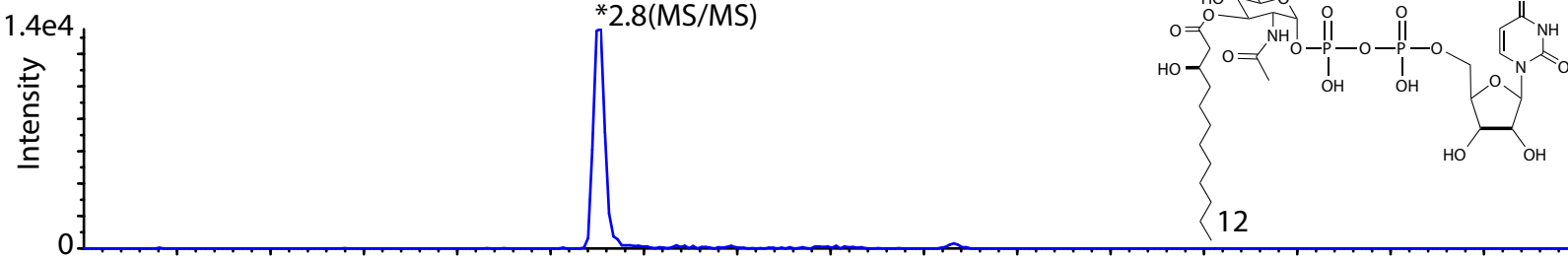


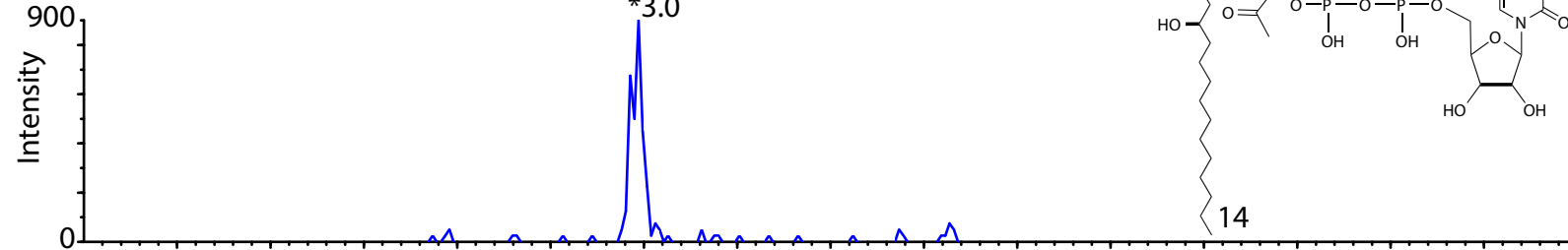
A. -ESI MRM(804.2/385.0)

LpxC



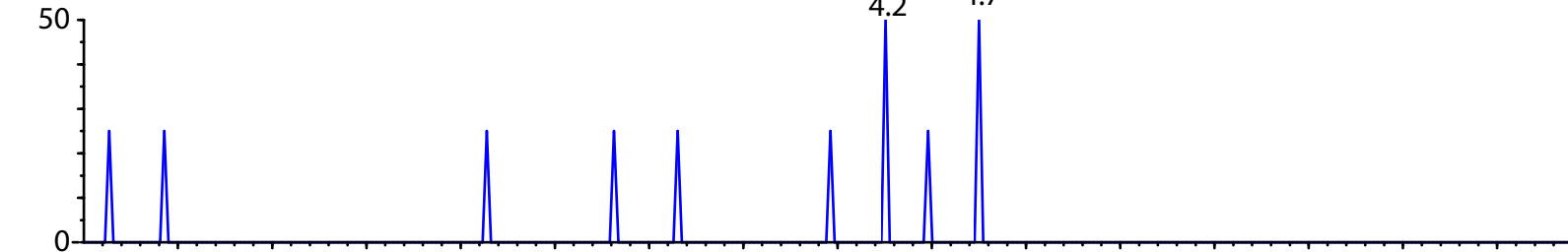
B. -ESI MRM(832.3/385.0)

LpxC



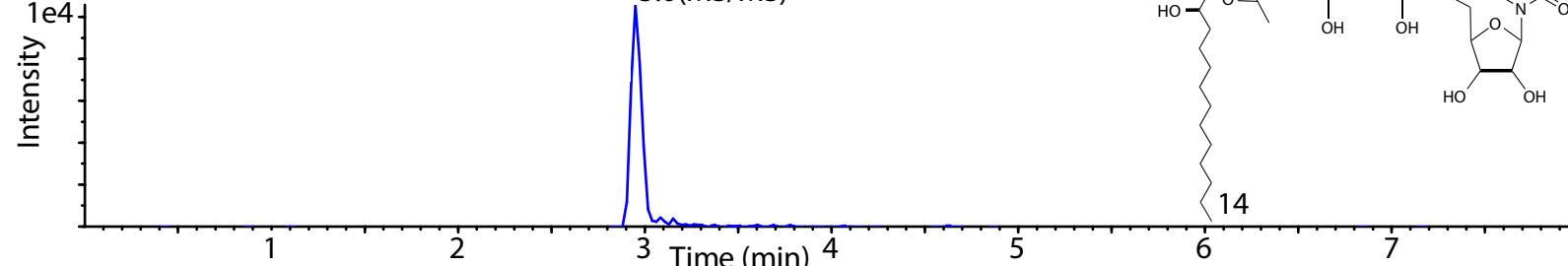
C. -ESI MRM(804.2/385.0)

Standard LpxA product



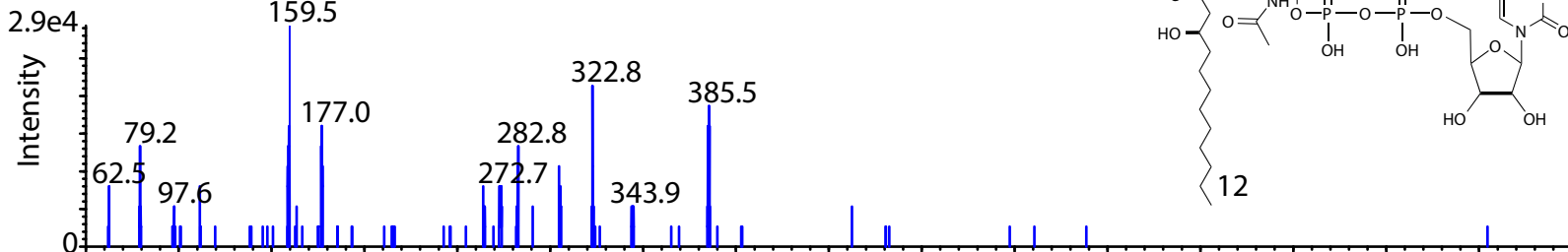
D. -ESI MRM(832.3/385.0)

Standard LpxA product



E. -ESI Product Ion Scan(804.2) (rt 2.7-2.8 min, CE -60)

LpxC



F. -ESI Product Ion Scan (832.3) (rt 2.9-3.0 min, CE -60)

Standard LpxA product

