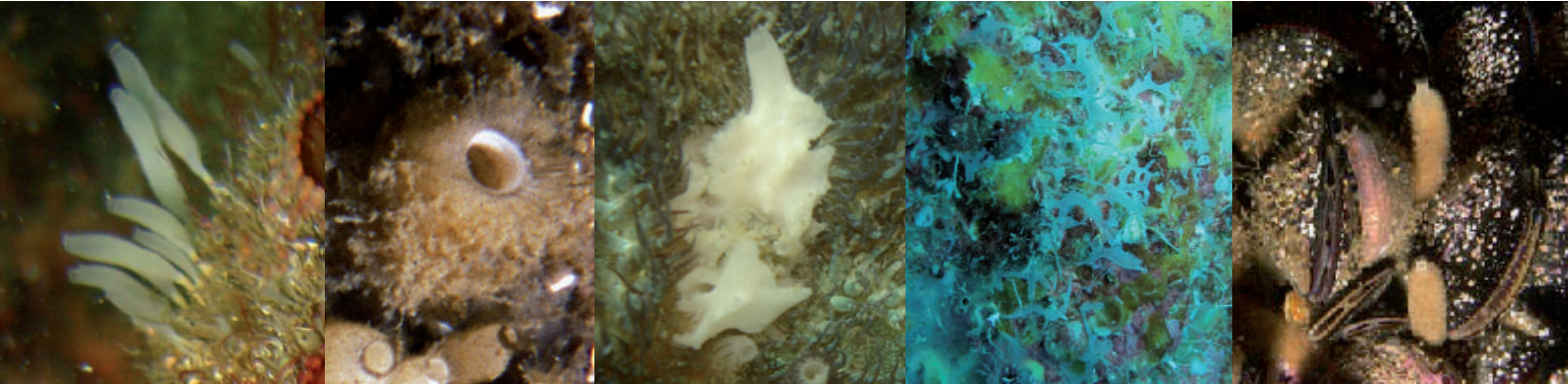


CALCAREA Class Calcaronea Subclass



Amphoriscus sp. nov.
vase, friable, oscules 2 mm

Leucandra rudifera
vase, crowned, oscules 3 mm

Leucilla sp. nov.
massive amorphous, friable, oscules 5 mm

Leucosolenia sp.
tubes protruding from a stolon not anastomosing, oscules 1 mm

Sycon sp. nov.
vase, friable, oscules 1-2 mm

Calcinea Subclass



Clathrina sp. nov.
tubular anastomosed, yellow, soft, 1-2 cm wide

Clathrina sp. nov.
tubular anastomosed, light yellow, soft, 1-3 cm wide

Leucaltis clathria
tubular, white to pink, friable, tubes 4-6 mm wide

Leucetta floridana
massive, white to blue, friable, oscules 1-4 cm

HOMOSCLEROMORPHA Class



Oscarella sp.
thin crust, lobate, oscules 0.5-1 cm

Plakinastrella onkodes
massive to tubular, gray brown to black, hard, oscules 1-2 cm

Plakortis angulospiculatus
smooth and dense, brown to gray, oscules < 1 cm

Plakortis halichondrioides
smooth, dark brown to black, dark exudate

DEMOSPONGIAE Class Agelasida Order



Agelas cerebrum
brown, grooved barrel-tubes (5-15 cm wide, 20-40 cm long), oscules on top of tubes

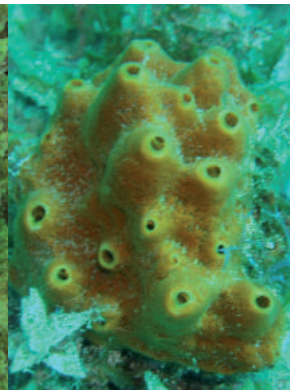
Agelas citrina
ear-shaped, golden brown to orange, sparse round oscules 3-5 mm

Agelas clathrodes
orange and flabellate (back) diverse oscules
A. sceptrum erect branches (front) oscules 2-3 mm with round membrane

Agelas conifera
orange brown, smooth tubes (5-15 cm wide, 30-60 cm long), oscules on top of tubes

Agelas dispar
brown sephia flabellate or massive, round oscules 2-4 mm, larger key hole deformed openings

Axinellida Order



Agelas wiedenmayeri

cluster of tubes 2-3 cm wide 6-20 cm long, oscules on top and on side of tubes, round to key-holed

Prosuberites laughlini

crustose, orange, rugose surface, oscules 1-6 mm with membrane

Didiscus oxeata

massive clumps, yellow-gray, meandering grooves at surface 1-5 mm wide

Dragnacidon reticulatum

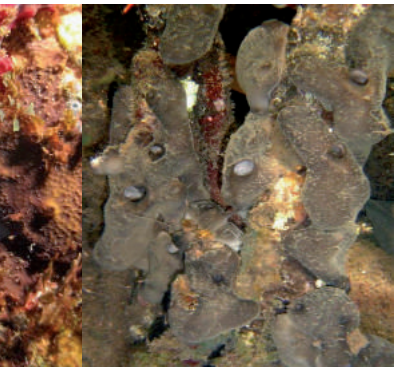
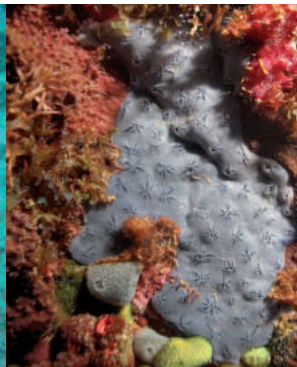
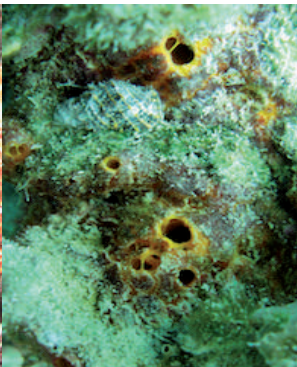
red thick crusts to mounds, conulose (5 mm), oscules 3-6 mm wide

Ectyoplasia ferox

brown-orange massive to lobate, oscules 2-10 mm, with brown rim and slightly elevated

Chondrillida Order

Chondrosiida Order



Myrmekioderma gyroderma

massive lobate, orange-yellow, meandering grooves at surface, oscules 1-2 cm

Myrmekioderma rea

crust filling crevices, orange-yellow, circular grooves at surface, oscules 1-3 cm

Ptilocaulis walpersii

erect thin (1-3 cm) branches, orange red, surface with spatulate projections

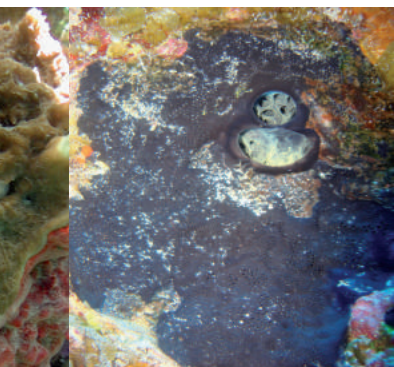
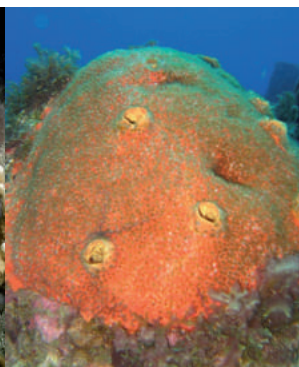
Halisarca caerulea

thin smooth and slippery crust, star-shaped oscules 2-3 mm

Chondrosia cf. collectrix

brown to black, massive to crust, cartilage consistency, oscules 1-4 mm wide

Clionaida Order



Cervicornia cuspidifera

antler like, hollow, deformed tips, cream-brown, tough

Cliona aprica

dark brown, small papilla 1-3 mm wide, sponge tissue within coral frame

Cliona delitrix

crustose, boring, orange to red, round papilla 2-5 mm, oscules with membrane (1-3 cm wide)

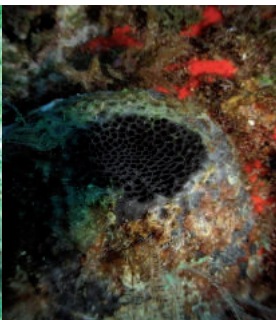
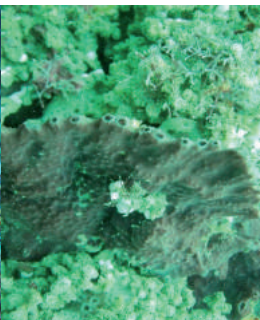
Cliona varians

crust to massive, brown greenish, brown membranaceous oscules 2-30 mm wide

Spheciospongia vesparium

black, leathery crust to globular, large oscules 1-5 cm

Dictyoceratida Order



Spirastrella hartmani

rustose, salmon to dull orange, membranaceous whitish oscules 5-20 mm wide

Ircinia campana

thin walled vase, oscules 1-5 mm, inner side, difficult to tear

Ircinia felix

variable shape amorphous to turret shaped, conules 1-2 mm, oscules 4-8 mm

Ircinia strobilina

massive, globular, conules 5 mm high, oscules 2-15 mm, aggregated on top

Smenospongia aurea

massive-lobate, yellow to brown, honey-combed surface, soft-firm, mucosy when cut

Haplosclerida Order



Amphimedon complanata
massive to flabelliform, dark brown-purple to black, oscules 1-3 mm wide



Amphimedon compressa
red ramose to flabelliform or massive, oscules 2-8 mm wide



Callyspongia fallax
short tubes to branches (3-4 cm wide), cream-gray to purplish, smooth, oscules 1-2 cm wide



Callyspongia plicifera
vase, outer surface with meandering grooves, iridescent pink, bluish, oscules 1-3 mm



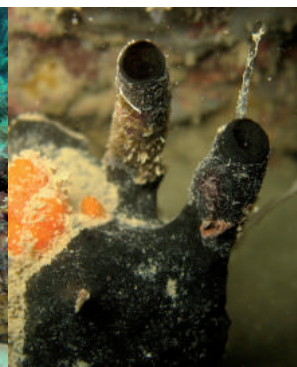
Callyspongia vaginalis
gray to pinkish, vase or tubes with 5-10 mm thick walls, conules 3 mm high, 5 mm apart



Calyx podatypa
fragile, hollow massive to branching, smooth, riddled by apertures < 1 cm wide



Cribrochalina vasculum
single to anastomosing plates, 1-2 cm thick, velvety surface, reddish brown



Neopetrosia carbonaria
repent branches to massive, hard, black and hollow, oscules 3-6 mm wide

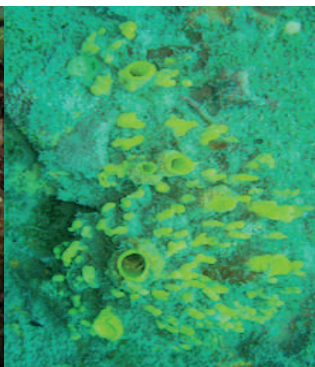


Neopetrosia proxima
massive, lobate, thick crust, brown to burgundy, oscules 3-10 mm

Poecilosclerida Order



Niphates digitalis
gray, pink to purplish, oscules inner wall, hispid surface between conules (1-3 mm high)



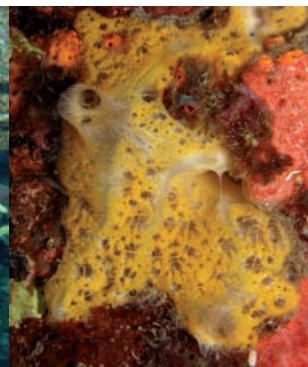
Spongosorites coralliophaga
excavating, yellow, oscular tubes 1-3 cm wide



Xestospongia muta
barrel sponge, red to burgundy, oscules 1-3 mm on inner wall



Iotrochota birotulata
sprawling branches, dark green to black, spiky, oscules 1-3 mm

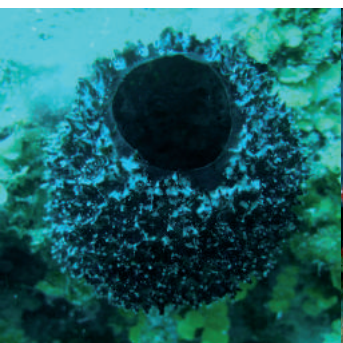


Mycale laevis
thick crust to branching, orange to white, oscules 1-4 cm with white strands on membrane

Polymastiida Order

Scopalinida Order

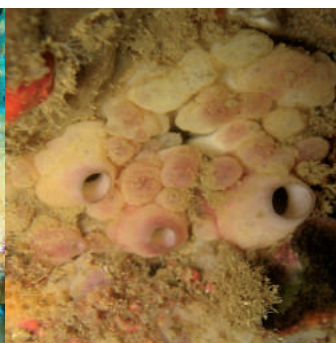
Suberitida Order



Mycale laxissima
tubular to globular, dark red to black, wall 1-2 cm, spiky pseudo-oscule 3-6 cm



Phorbos amaranthus
bright red crust, areolated surface, oscules 5-20 mm



Polymastia tenax
brown to red-brown mounds with papilla, oscular chimneys (5-30 mm wide, 10-20 mm high)



Svenzea zeai
massive to ramose, velvety, soft, oscules 1-2 cm wide

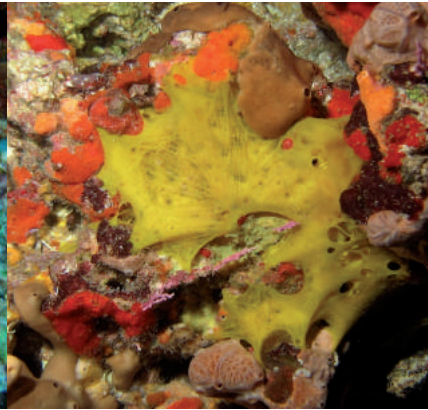


Topsentia ophiraphidites
massive to platy, hard, smooth-velvety surface, red-brown to white

Tetractinellida Order



Cinachyrella kuekenthali
round, up to 20 cm wide, orange redish to gray, porocalices 5 mm



Dercitus luteus
thin yellow crust, smooth and leathery



Erylus formosus
massive cushions, brown to black, smooth, oscules 1-10 mm



Geodia neptuni
massive to globular, greenish brown, rugose and hard, oscules on top plate few mm wide

Verongiida Order



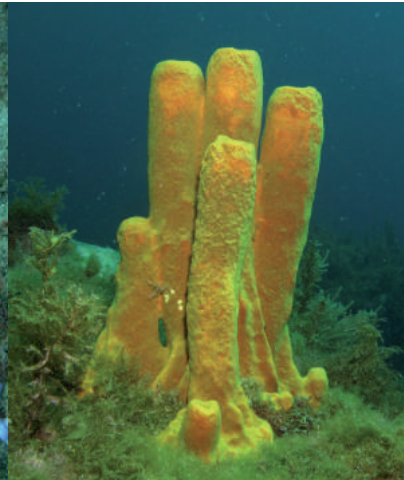
Aiolochoiria crassa
bright yellow to purple, lobes or masses, round conules, oscules 1-2 cm



Aplysina archeri
purple to violet tubes, micro-conulose (< 1 mm high), firm



Aplysina cauliformis
pink to purple-brown, branches, conules 0.1 mm high



Aplysina fistularis
yellow tubes, > 10 cm high, 2-8 cm wide, conules 5 mm



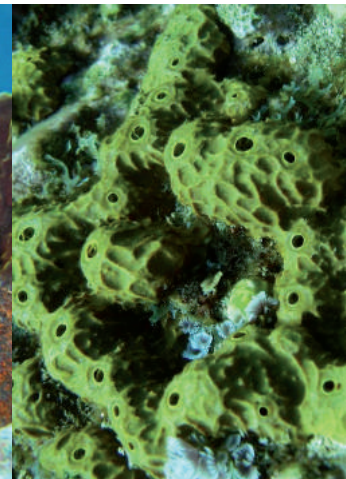
Aplysina fulva
yellow to ochre branches, conules 0.5 mm



Aplysina lacunosa
yellow-brown tubes, with strongly grooved surface, groves up to 1 cm wide



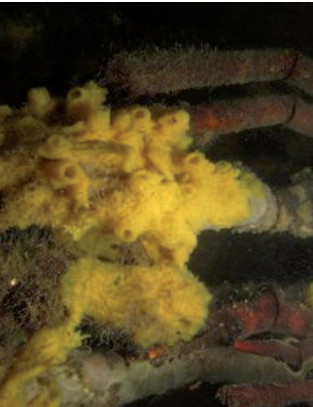
Verongula reiswigi
yellow green, tubes up to 30 cm high, ridged surface, soft consistency, oscular membrane



Verongula rigida
yellow to brown lobes, "honey comb" surface, firm, oscules 0.5-1.5 cm wide, with membrane

DEMOSPONGIAE Class

Biemnida Order



Biemna caribea
massive crustose, yellow, soft,
oscles 1-4 mm wide with membrane

Chondrillida Order

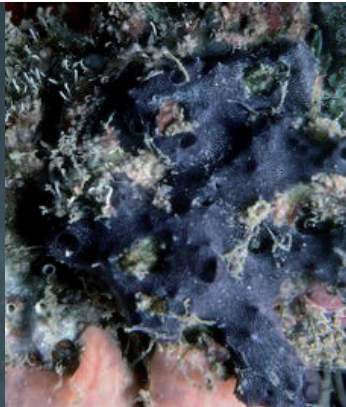


Chondrilla caribensis
crust to massive, gray to dark brown,
smooth, oscles 1-2 mm

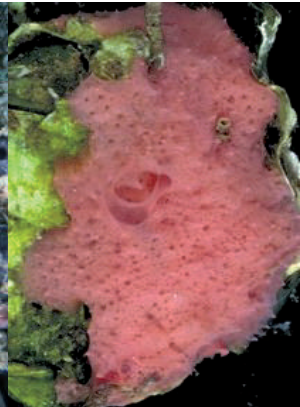


Halisarca restigaensis
thin crust, cream-yellowish,
slippery, oscles 1-2 mm

Dendroceratida Order



Chelonaplysilla aff. erecta
spiky, very soft, black, conules 3-5 mm



Darwinella rosacea
thin crust and porous, pink or rose,
soft, conules 0.5 mm

Dictyoceratida Order



Dysidea etheria
crust or massive, soft, blue pink,
conules 1 mm high, 2-4 mm apart



Hyrtilos proteus
massive, compressible, black out and
brown in, conules > 1 mm



Spongia pertusa
massive, compressible and visually smooth,
black out and brown in, conules < 5 mm



Amphimedon erina
crust to lobate, firm, oscles 2-4 mm



Callyspongia pallida
crust and porous, firm, violet to brown,
oscles 2-4 mm with white membrane

Haplosclerida Order



Chalinula molitba
cushions to ramose, flimsy,
oscles 1-7 mm



Haliclona caerulea
crusts cushions or digitate, bluish,
firm, oscles 1-8 mm



Haliclona curacaoensis
crust to cushions, gray to whitish, rugose
compressible sticky mucous, oscles 5-15 mm



Haliclona implexiformis
crust to cushions, rose to violet,
compressible, oscles 4-10 mm



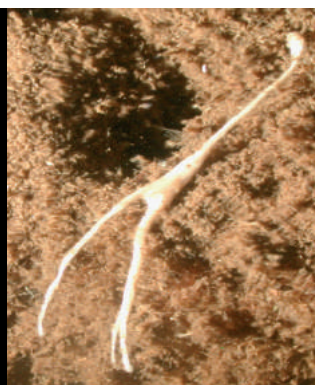
Haliclona manglaris
thin crust to cushions, soft, oscles 1-3 mm



Haliclona cf. piscaderaensis
crust, friable, grayish white,
oscles 2-3 mm



Haliclona tubifera
crust to cushion, pink to violet,
firm, with filaments



Haliclona twincayensis
dichotomous thin (1-3 mm)
branches, oscles < 1 mm



Haliclona vermeuleni
tubes with spiky extensions, turquoise
to gray, firm, oscles 1-3 mm



Niphates caycedoi
crust, violet to pink, firm, oscles 4-8 mm

Poecilosclerida Order



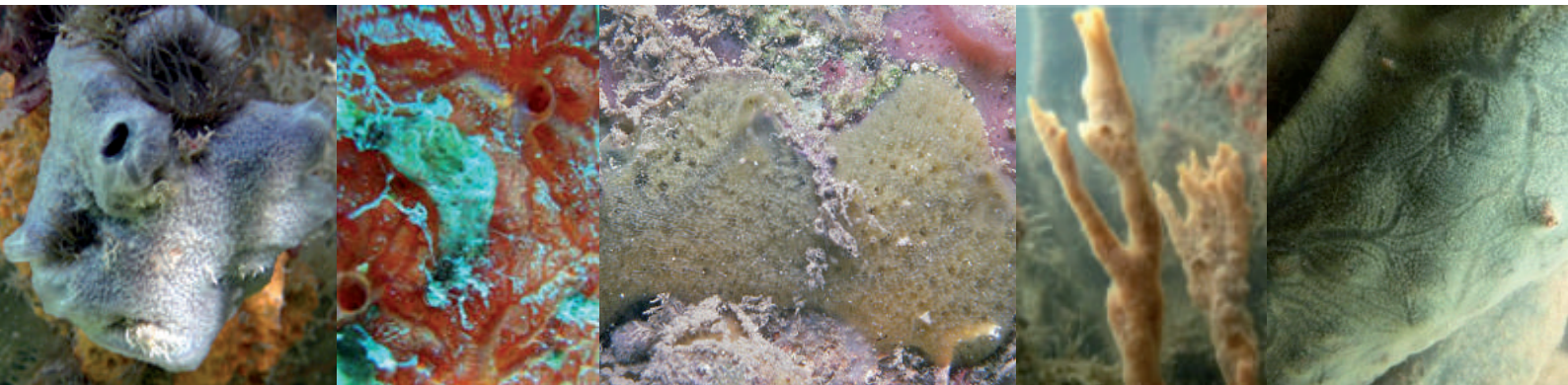
Niphates erecta
massive to ramose, rose to gray, hispid surface, oscules 3-7 mm

Artemisina melana
crustose, dark brown out and orange in, soft, oscules 5-10 mm

Clathria curacaoensis
crust to ramose, orange to red with yellow tinges, oscules 4-10 mm and can be as small as 1 mm

Clathria venosa
thin crust, gray to cream, oscules 2-4 mm, with radial canals

Desmapsamma anchorata
lobate to ramose, pink-red to orange, oscules 1-5 mm with membrane



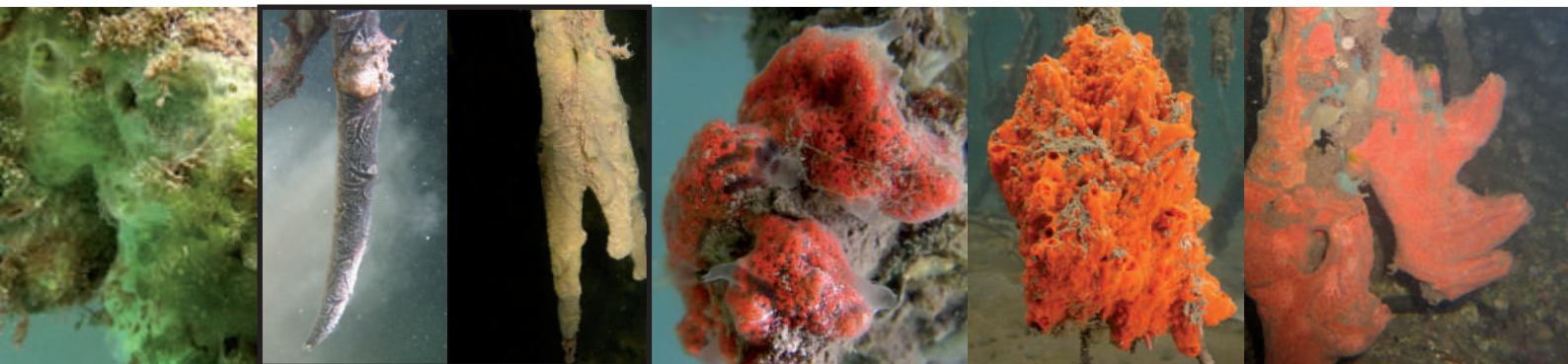
Lissodendoryx isodictyalis
massive to lobate, pale gray green violet, oscules 4-10 mm, with membrane and one side canal

Monanchora arbuscula
crust to ramose, red with transparent membrane, oscules 3-20 mm

Mycale americana
crust 0.5-20 mm, yellow to orange, mucose, oscules 3-10 mm

Mycale angulosa
crustose to ramose, bluish orange cream, oscules 1-10 mm

Mycale carmigropila
thin to thick crust, light green to bluish, oscules 2-10 mm, with canals



Mycale citrina
small crust, lemon yellow, oscules 1-3 mm

Mycale magnirhaphidifera
thin crust, purple yellow to bluish, oscules 1-3 mm

Mycale microsigmatosa
crustose thin to thick, red orange gray, bright red dots, oscules 3-5 mm

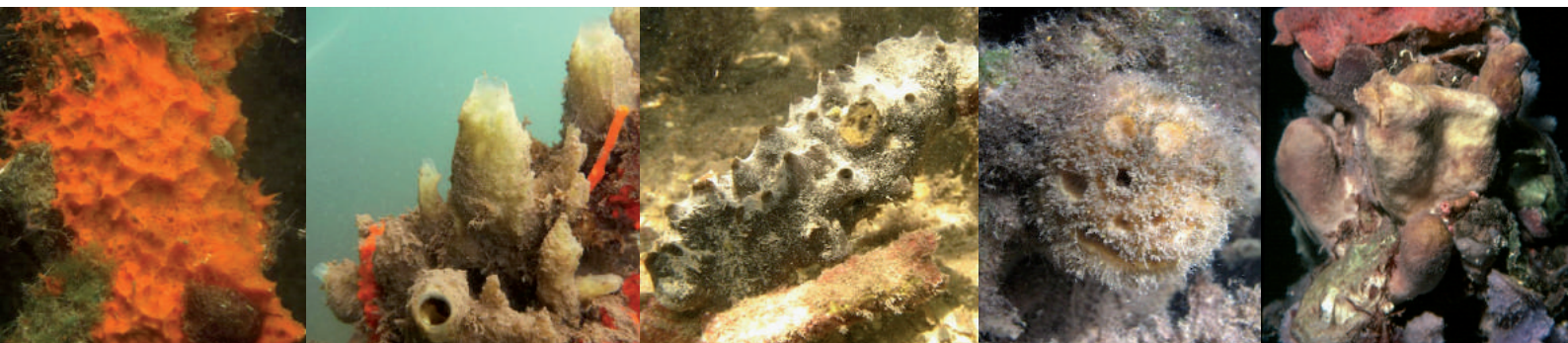
Tedania ignis-fire sponge
massive amorphous, red-orange, oscules 0.5-3 cm

Tedania klausii
massive lobated, red-orange white tinges, oscules 1-3 cm

Scopalinida Order

Suberitida Order

Tetractinellida Order



Scopalina ruetzleri
bright to drab orange, soft, conulose, oscules 2-6 mm

Halichondria magniconulosa
massive, yellowish, rugose, oscules projections 5-10 mm wide

Halichondria melanadocia
dark grey to black out and orange in, oscules 5-10 mm

Cinachyrella apion
round, yellowish, porocalices up to 3 mm

Geodia papyracea
massive brown, oscules 2-5 mm, aggregated on plates