

## RESEARCH ARTICLE

## Genetic relatedness in carbapenem-resistant isolates from clinical specimens in Ghana using ERIC-PCR technique

Francis S. Codjoe<sup>1,2</sup>, Charles A. Brown<sup>1</sup>, Thomas J. Smith<sup>2</sup>, Keith Miller<sup>2\*</sup>, Eric S. Donkor<sup>3\*</sup>

**1** Department of Medical Laboratory Sciences, School of Biomedical & Allied Health Sciences, College of Health Sciences, University of Ghana, Ghana, **2** Biomolecular Science Research Centre, Sheffield Hallam University, Sheffield, England, United Kingdom, **3** Department of Medical Microbiology, School of Biomedical & Allied Health Sciences, College of Health Sciences, University of Ghana, Ghana

\* [K.Miller@shu.ac.uk](mailto:K.Miller@shu.ac.uk) (KM); [esampane-donkor@ug.edu.gh](mailto:esampane-donkor@ug.edu.gh) (ESD)



## OPEN ACCESS

**Citation:** Codjoe FS, Brown CA, Smith TJ, Miller K, Donkor ES (2019) Genetic relatedness in carbapenem-resistant isolates from clinical specimens in Ghana using ERIC-PCR technique. PLoS ONE 14(9): e0222168. <https://doi.org/10.1371/journal.pone.0222168>

**Editor:** Adriano Gianmaria Duse, School of Pathology, National Health Laboratory Service (NHLS) and University of the Witwatersrand, South Africa, SOUTH AFRICA

**Received:** April 2, 2019

**Accepted:** August 19, 2019

**Published:** September 12, 2019

**Copyright:** © 2019 Codjoe et al. This is an open access article distributed under the terms of the [Creative Commons Attribution License](https://creativecommons.org/licenses/by/4.0/), which permits unrestricted use, distribution, and reproduction in any medium, provided the original author and source are credited.

**Data Availability Statement:** Data will be available upon request. This is because the data contains potentially sensitive patient information. In view of this, the ethics committee has placed some restrictions on its sharing. Data request may be addressed to the Chair of the Ethical and Protocol Review Committee, College of Health Sciences, University of Ghana, Korle Bu Campus, Accra, Ghana; Email: [eprc@chs.edu.gh](mailto:eprc@chs.edu.gh)

## Abstract

## Aim

Enterobacterial repetitive intergenic consensus (ERIC) sequence analysis is a powerful tool for epidemiological analysis of bacterial species. This study aimed to determine the genetic relatedness or variability in carbapenem-resistant isolates by species using this technique.

## Methods

A total of 111 non-duplicated carbapenem-resistant (CR) Gram-negative bacilli isolates from a three-year collection period (2012–2014) were investigated by enterobacterial repetitive intergenic consensus-polymerase chain reaction (ERIC-PCR) in four selected hospital laboratories in Ghana. The isolates were also screened for carbapenemase and extended spectrum  $\beta$ -lactamase genes by PCR.

## Results

A proportion of 23.4% (26/111) of the genomic DNA extracts were carriers of PCR-positive carbapenemase genes, including 14.4% *bla*NDM-1, 7.2% *bla*VIM-1 and 1.8% *bla*OXA-48. The highest prevalence of carbapenemase genes was from non-fermenters, *Acinetobacter baumannii* and *Pseudomonas aeruginosa*. For the ESBL genes tested, 96.4% (107/111) of the CR isolates co-harboured both TEM-1 and SHV-1 genes. The ERIC-PCR gel analysis exhibited 1 to 8 bands ranging from 50 to 800 bp. Band patterns of 93 complex dissimilarities were visually distinguished from the 111 CR isolates studied, while the remaining 18 showed band similarities in pairs.

## Conclusion

Overall, ERIC-PCR fingerprints have shown a high level of diversity among the species of Gram-negative bacterial pathogens and specimen collection sites in this study. ERIC-PCR

**Funding:** The study was funded through a grant from the Office of Research, Innovation and Development of the University of Ghana to FSD, and a PhD sponsorship from the College of Health Sciences Endowment fund of the University of Ghana. The funders had no role in study design, data collection and analysis, decision to publish, or preparation of the manuscript.

**Competing interests:** The authors have declared that no competing interests exist.

optimisation assays may serve as a suitable genotyping tool for the assessment of genetic diversity or close relatedness of isolates that are found in clinical settings.

## Background

The enterobacterial repetitive intergenic consensus (ERIC) technique is a molecular method used for the epidemiological analysis and genotyping of bacterial species. The application of ERIC offers a greater potential for the study of the development of bacterial interspersed repetitive arrangements because sequences are lengthier and do not rely on targeting a specific region of the genome. In addition, it offers detailed information to enable comparative analysis in a wide range of bacterial species [1, 2].

It is noteworthy that the ERIC technique has been used in many different areas of research including veterinary microbiology, food microbiology and, in particular, various clinical areas dealing with human infections within the hospital environment and in the community [3–7]. Indeed, enterobacterial repetitive intergenic consensus-polymerase chain reaction (ERIC-PCR) can be used to study human pathogens, in both Gram-positive and -negative bacterial isolates in order to determine their genetic diversity, and occasionally extended to bacterial pathogens in the animal kingdom. Further, genomic DNA fingerprints from ERIC-PCR have proved to be useful for the investigation of other organisms apart from those in the Enterobacteriaceae family such as *Aeromonas* species, [8] *Staphylococcus aureus*, [9] and *Haemophilus parasuis* [10]. More recently, the application of ERIC-PCR has been used to investigate opportunistic pathogens, including *Pseudomonas aeruginosa* and *Acinetobacter baumannii*, that are capable of causing outbreaks in hospitals worldwide [11–16]. Isolates of *Pseudomonas* spp. and *Acinetobacter* spp. can easily acquire multiple resistance to a panel of antimicrobials including carbapenems, share common genes, transfer resistant traits both intra and interspecies, and the encoded genes they carry are extremely mobile, particularly in *Pseudomonas aeruginosa* [17, 18]. Good reproducibility and applicability in the determination of close relatedness have been reported in several studies on a variety of pathogens, which share the same homogeneities. For most Gram-negative bacterial strains, diversity/similarity among pathogens have traditionally been determined using antimicrobial resistance patterns, basic microbiological methods or genotyping methods such as by gene expression using microarray technology, multilocus sequence typing (MLST), pulsed field gel electrophoresis (PFGE) and ERIC. To date, there are no reports on the investigation of the presence of  $\beta$ -lactamase determinants in carbapenem-resistant (CR) isolates and their clonal relatedness or variabilities in Ghana. This study aimed to broadly determine the genetic relatedness or variability in both carbapenemase PCR-positive isolates and CR isolates without a genetically identified locus (carbapenemase PCR negative), and separately assess clonal similarities for all the PCR-positive species using fingerprint patterns generated by ERIC-PCR amplifications.

## Methods

### The study isolates

The study isolates comprised 111 non-duplicated CR Gram-negative bacilli isolates collected from four selected hospital laboratories in Ghana over a three-year period (2012–2014). The hospitals included Effia-Nkwanta Hospital (ENH) in the Western Region, AngloGold Mines Hospital (AMH) in the Ashanti Region, Ho Regional Hospital (HRH) in the Volta Region and Korle-Bu Teaching Hospital in the Greater Accra Region (KBTH). These hospitals were

selected to represent the different types of hospitals in Ghana including regional hospitals (HRH and ENH), a district hospital (AMH) and in a tertiary hospital (KBTH). The CR isolates consisted of 51 *Pseudomonas aeruginosa*, 31 *Acinetobacter baumannii*, 12 *Escherichia coli*, 7 *Pseudomonas putida*, 3 each of *Klebsiella pneumoniae* and *Enterobacter cloacae*, and one each of *Cronobacter sakazakii*, *Providencia stuartii*, *Shigella sonnei* and *Sphingomonas paucimobilis*. The organisms were isolated from ten specimen types but most of the isolates were from wound infections (47) and urinary specimens (31). The Vitek 2 automated compact system (BioMérieux, France) was used to identify the CR isolates to species level. *Escherichia coli* ATCC 25922, which is susceptible to carbapenems, and *Klebsiella pneumoniae* carbapenemase positive NCTC 13438 were included in the identification as controls. Carbapenem resistance of the CR isolates was determined by both disc diffusion test and E-test.

### PCR analysis of carbapenemase and extended spectrum $\beta$ -lactamase genes

DNA extraction of the CR isolates was performed using the QiaAmp mini Kit (Qiagen, Hilden, Germany). The DNA samples were used in PCR analysis of carbapenemase and extended spectrum  $\beta$ -lactamase genes. The carbapenemase genes screened were Oxacillinase-48 (OXA-48), New Delhi metallo- $\beta$ -lactamase-1 (NDM-1), Imipenem-resistant *Pseudomonas*-1 (IMP-1), Verona integron-encoded metallo- $\beta$ -lactamase-1 (VIM-1), and *Klebsiella pneumoniae* carbapenemase (KPC). The ESBL genes screened were *bla*TEM and *bla*SHV. The PCR reaction mix was aseptically prepared using PyroMark Master Mix Kit (Qiagen, Hilden, Germany). PCR amplification of carbapenemase and ESBL genes were based on primers described by Poirel *et al.* [19] and Schlesinger *et al.* [20] respectively. These primers as well as the PCR cycling conditions are reported in Table 1.

### Enterobacterial repetitive intergenic consensus-PCR (ERIC-PCR)

Enterobacterial repetitive intergenic consensus-PCR (ERIC-PCR) was performed using the DNA extracts and reaction mixture described in 2.2. The primers and cycling conditions used for the ERIC-PCR were those described by Ye *et al.* [21], which are also illustrated in Table 1. Band patterns obtained by ERIC-PCR were visually evaluated in the absence of appropriate software. All isolates were analysed with duplicate gels in each electrophoresis run for uniformity. For quality control and consistency in DNA migration during electrophoresis, all the gels were electrophoresed for an equal period of time. Isolates with two or more different bands were interpreted as unrelated.

### Fingerprints of ERIC-PCR

Dendrograms were produced using the positions of the band lanes on each agarose gel normalise against a standard 1 kb DNA molecular marker as a reference. The location of each given band was located as one and no band as zero. The nearest band patterns of each bacterial species were used to analyse the similarity or variability matrix calculated by the number of base differences. Dendrograms of ERIC-PCR fingerprint patterns were assembled for both PCR carbapenemase negatives and carbapenemase positive gene carriers together and separately for all carbapenemase positive gene carriers based on each species. This was done with the aid of Gel ComparII image analysis software (version 6.6.11, Applied Maths, Kortrijk, Belgium), and the unweighted pair group method with arithmetic mean (UPGMA) cluster method was applied to all data.

**Table 1. Primer sets for amplification of carbapenemase and extended spectrum  $\beta$ -lactamase genes.**

Gene	Primer sequence (5'→3')	Amplicon size (bp)	PCR cycling conditions	Reference
<i>blaIMP</i>	Forward— GGAATAGAGTGGCTTAAYTCTC Reverse— GGTTTAAAYAAAACAACCACC	232	Initial denaturation at 95°C for 3 minutes, followed by 40 cycles of denaturation at 95°C for 1 minute, annealing at 58°C for 30 seconds, and elongation at 72°C for 1 minute 30 seconds, followed by a final elongation step at 72°C for 10 minutes	Poirel <i>et al.</i> [19]
<i>blaVIM</i>	Forward— GATGGTGTGGTTCGCATA Reverse—CGAATGCGCAGCACCAG	390		Poirel <i>et al.</i> [19]
<i>blaOXA-48</i>	Forward— GCGTGGTTAAGGATGAACAC Reverse— CATCAAGTTCAACCCAACCG	438		Poirel <i>et al.</i> [19]
<i>blaNDM</i>	Forward— GGTTTGGCGATCTGGTTTTTC Reverse— CGGAATGGCTCATCAGATC	621		Poirel <i>et al.</i> [19]
<i>blaKPC</i>	Forward— CGTCTAGTTCTGCTGTCTTG Reverse— CTTGTCATCCTTGTTAGGCG	798		Poirel <i>et al.</i> [19]
<i>blaTEM</i>	Forward—TCAACATTTTGTGTCGTCG Reverse— CTGACAGTTACCAATGCTTA	860	Initial denaturation 15 minutes at 95°C and 35 cycles of 1 minute at 94°C, 1 minute at an annealing temperature of 47°C and 50°C designed for each primer set for TEM and SHV respectively, and 1 min at 55°C, followed by 10 minutes at 72°C for the final extension.	Schlesinger <i>et al.</i> [20]
<i>blaSHV</i>	Forward— TTTATCGGCCYTCACCTCAAGG Reverse—GCTGCGGGCCGGATAACG	930		Schlesinger <i>et al.</i> [20]
ERIC	Forward- AAGTAAGTGACTGGGGTGAGCG Reverse- ATGTAAGCTCCTGGGGATTAC		Reaction conditions were: 95°C for 15 minutes and 45 cycles of 94°C for 30 seconds, 45°C for 45 seconds, and 72°C for 7 minutes, followed by a final extension at 72°C for 10 minutes	Ye <i>et al.</i> [21]

Key: IMP, imipenem-resistant *Pseudomonas*; VIM, Verona integron-encoded metallo- $\beta$ -lactamase; OXA-48, oxacillinase-48; NDM, New Delhi metallo- $\beta$ -lactamase; KPC, *Klebsiella pneumoniae* carbapenemase; TEM-1, Temoniera-1; SHV-1, sulphhydryl variable-1; ERIC, Enterobacterial repetitive intergenic consensus.

<https://doi.org/10.1371/journal.pone.0222168.t001>

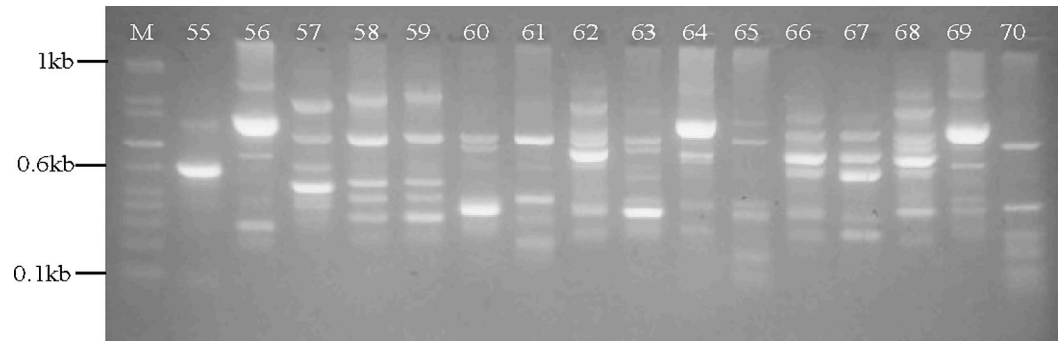
### Ethical considerations

The study was approved by the Ethical Committee of the School of Biomedical and Allied Health Sciences, University of Ghana (Ethics Identification Number: SAHS-ET/SAHS/PSM/ML/05/AA/26A/2012-2013). As the samples used in the study were archived isolates, we could not obtain patients' consent for use of their clinical data. However, all patients' data and isolates were de-identified to ensure anonymity.

## Results

### 3.1 Genotypic assays of CR isolates

Genotyping by PCR assay identified 26/111 (23.4%) of the genomic DNA extracts as carriers of PCR-positive carbapenemase genes, including 14.4% blaNDM-1, 7.2% blaVIM-1 and 1.8% blaOXA-48 genes. The distribution of carbapenemase genes in the Gram-negative study isolates were as follows: *Acinetobacter baumannii* (9 NDM-1 positives); *Pseudomonas aeruginosa* (2 NDM-1 and 7 VIM-1); *Escherichia coli* (3 NDM-1); *Klebsiella pneumoniae* (2 OXA-48); *Pseudomonas putida* (1 VIM-1); *Providencia stuartii* (1 NDM-1); and *Shigella sonnei* (1 NDM-1). For the ESBL genes tested, 96.4% (107/111) of the CR isolates co-harboured both TEM-1



**Fig 1. Representative example of ERIC fingerprints of different carbapenem-resistant isolates on agarose gel electrophoresis.** Note: M = DNA 1 kb marker, 55 through to 70 = numbered fingerprints. By visual inspection sample numbers 58 & 59 are showing close relatedness on the gel.

<https://doi.org/10.1371/journal.pone.0222168.g001>

and SHV-1 genes. However, three of the isolates that were negative on the PCR assay harboured the TEM-1 gene alone. All of the 26 carbapenemase-positive gene carrying isolates harboured both the ESBL genes (TEM-1 and SHV-1) except the *Shigella sonnei* strain which harboured only the TEM-ESBL gene.

### 3.2 ERIC-PCR analysis

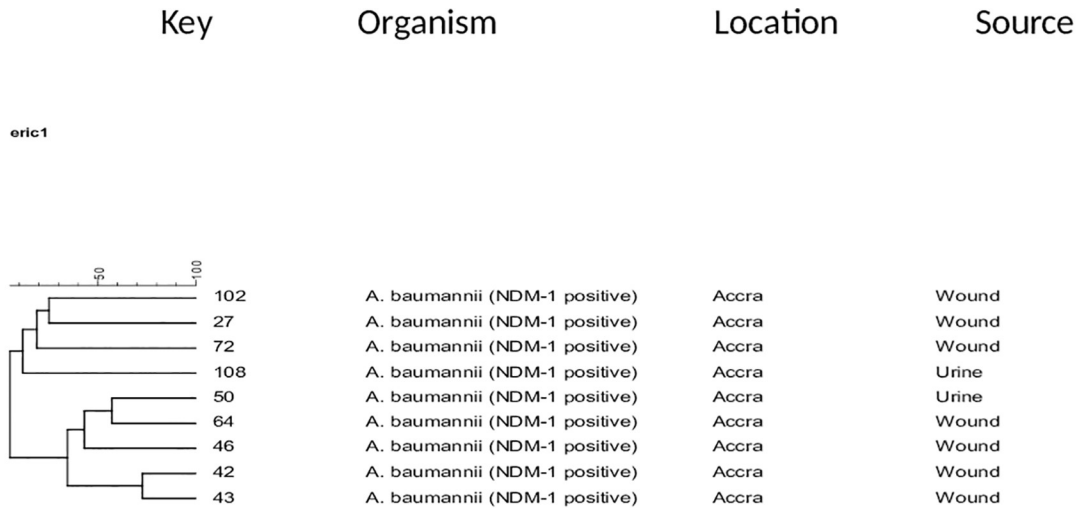
The ERIC-PCR gel analysis exhibited 1 to 8 bands ranging from 50 to 800 bp. Band patterns of 93 complex dissimilarities were visually distinguished from the 111 CR isolates studied, while the remaining 18 showed band similarities in pairs. A typical gel fingerprint showing representative band patterns is shown in Fig 1.

Dendrogram data generated from the computer-designed analysis indicated a high genetic dissimilarity among the 26 PCR-positive carbapenemase carriers with few distinguishable patterns based on species of CR isolates (Fig 2). However, 2 cluster-pairs of *Acinetobacter baumannii* and cluster-pair *Pseudomonas aeruginosa* isolates were harbouring NDM-1 and VIM-1 genes, respectively. Strikingly, the only cluster-pair of OXA-48 carrying *Klebsiella pneumoniae* isolates were genetically related from male patients, however, they were observed to have come from different age groupings, specimens and hospitals in this study. Comparatively, low numbers showed relatedness in the PCR-positive carbapenemase carriers in relation to specimen types and regional hospitals (Table 2). Overall ERIC data obtained from diverse clinical specimens indicated that there was no evidence in this study of horizontal transfer of CR isolates.

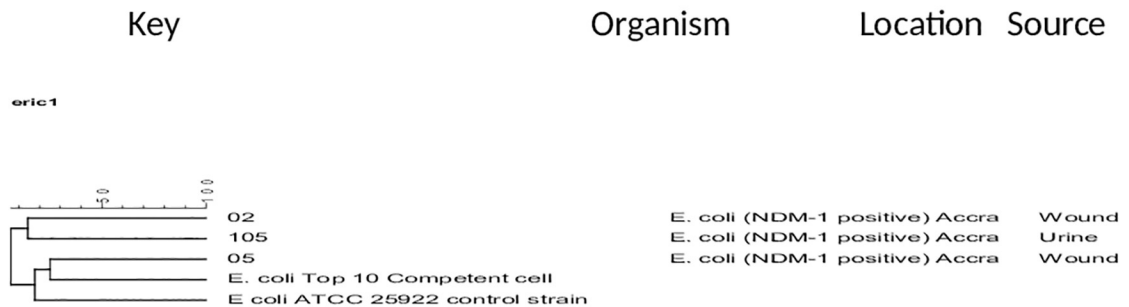
## Discussion

This is the first study in Ghana and one of the few in sub-Saharan Africa to investigate the genetic diversity of CR Gram-negative bacilli isolates from clinical specimens. The study analysis has shown a high degree of genetic diversity among the CR isolates using the ERIC-PCR technique. ERIC-PCR fingerprints have proved the existence and expression of MBL-types namely; NDM-1- and VIM-1-type of genes following genomic DNA optimisation of the CR study isolates. A study by Abdalhamid *et al.* [22] described the expression of the two genes as highly transmissible on mobile elements that can easily spread from one patient to another in a health-care environment [22].

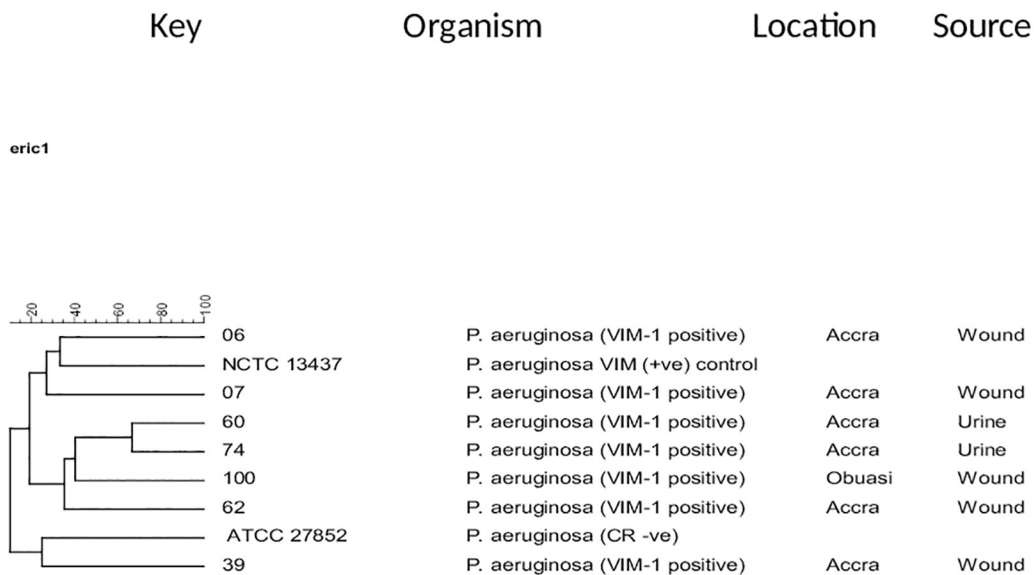
ERIC-PCR typing showed distinguishable fingerprints for the 111 CR isolates. In assessing the patterns of all fingerprints, 83.8% (93/111) were observed to have substantial variability among the 10 diverse CR organisms recovered from the four hospitals. However, a small



Group A: *Acinetobacter baumannii* NDM-1 positive gene carriers



Group B: *Escherichia coli* NDM-1 positive gene carriers with control strains



Group C: *Pseudomonas aeruginosa* VIM1-1 positive gene carriers with control strains

**Fig 2. Dendrogram generated from ERIC-PCR genomic DNA products for carbapenemase-positive gene carriers.** Key: isolate number or control strain/ type number. Regarding the groupings based on type of species, type of resistance gene, hospital location and source of specimen, the following groupings based on type of species: Group A (*A. baumannii* NDM-1 positive) 102 & 27, 42 & 43 and 50 & 44 in urine and wound respectively; Group B (*E. coli* NDM-1 positive) 02 & 105 in wound and urine respectively; Group C (*P. aeruginosa* VIM-1 positive) 60 & 74 are showing close relatedness in cluster-pairs.

<https://doi.org/10.1371/journal.pone.0222168.g002>

number (6/82) of the non-fermenting, *Acinetobacter baumannii* and *Pseudomonas aeruginosa* isolates, were observed to exhibit close relatedness. Of significance to this study, the ERIC-PCR profiling has shown the diversity that existed among the various species of pathogens within the CR isolates. Notably, in the carbapenemase-positive gene carriers, the only two cluster-pairs, NDM-1 positive *Acinetobacter baumannii* and VIM-1 positive *Pseudomonas aeruginosa* isolates, were detected from the Korle Bu Teaching Hospital (KBTH) in the Greater Accra region and none of these cluster relations were detected in the three other regional hospitals studied. These observations imply that there is very limited transmission of resistant isolates in the four hospitals from which isolates were collected and possibly that the mobility of the resistant determinants is also low. The presence of MBL-types of resistance genes, coupled with ESBL production and the unknown number of other resistance genes encoded in the *Acinetobacter baumannii* isolates in this study is of major concern in a hospital environment [23]. The two organisms, *Pseudomonas aeruginosa* and *Acinetobacter baumannii*, have been described as environmental and opportunistic pathogens naturally adaptable in hospitals to cause serious infections, with mortality rates ranging from 18% to 61% [24]. Additionally, clonal transfer of resistance genes is commonly associated with these non-fermenting isolates in several studies worldwide [17, 25–28]. *Acinetobacter baumannii* and *Pseudomonas* species are known to cause serious, difficult to treat infections, and are ubiquitously found in the majority of health-care facilities. Many vulnerable patients, such as the elderly in ICUs, and children and babies admitted in NICU, are at an increased risk of infections caused by these organisms [29, 30]. An evidence based study carried out in paediatric and NICU wards recovered emerging carriers of OXA-type carbapenemase genes in *Pseudomonas* and *Acinetobacter* species, [14] while both species have been found as carriers of the MBL-type genes [31, 32].

Berezin *et al.* [30] described infections of *Pseudomonas* and *Acinetobacter* species as most critical when additionally associated with resistance genes for fluoroquinolones, tetracyclines, sulphonamides, and aminoglycosides encoded on the same moveable genetic elements. The presence of ESBL enzymes in these non-fermenting isolates is their common risk factors for carbapenemase resistance. Further, ESBL production becomes problematic when in association with carbapenemase resistance genes, usually identified with a reduced susceptibility to

**Table 2. Genetic relatedness among the carbapenemase-positive gene carriers.**

Sample code number <sup>a</sup>	Name of carbapenem- resistant isolate	Regional hospitals				Type of specimen	ESBL β-lactamase genes		Carbapenemase genes		
		KBTH	ENRH	AGMH	HRH		TEM	SHV	NDM	VIM	OXA
102 & 27	<i>A. baumannii</i>	+	-	-	-	Wound	+	+	+	-	-
42 & 43	<i>A. baumannii</i>	+	-	-	-	Wound	+	+	+	-	-
50 & 64*	<i>A. baumannii</i>	+	-	-	-	Urine & Wound	+	+	+	-	-
02 & 105*	<i>E. coli</i>	+	-	-	-	Wound & Urine	+	+	+	-	-
60 & 74	<i>P. aeruginosa</i>	+	-	-	-	Urine	+	+	-	+	-

<sup>a</sup> Cluster-paired sample numbers

\* Closely related but different specimens respectively

Note: + = found in both, - = not found in both

<https://doi.org/10.1371/journal.pone.0222168.t002>

third-generation cephalosporins and quinolones. In contrast, only moderate increases in resistance to the same antimicrobial drug classes are observed in the Enterobacteriaceae group when phenotypically assessed [17, 18].

In the current study, a computer-generated ERIC-PCR profile revealed that 14.4% (16/111) of CR isolates which displayed multiple band patterns comprising; 9 (8.1%) isolates of *Acinetobacter baumannii*, 4 (3.6%) *Pseudomonas aeruginosa*, 2 (1.8%) each of *Pseudomonas putida*, *Escherichia coli* and *Enterobacter cloacae*, showed cluster patterns. These few species likely have a related origin of dissemination. A similar study conducted by Siqueira *et al.* [14] found that small pocket groupings of *Pseudomonas* and *Acinetobacter* encoded with carbapenemase resistance genes were detected showing clonal similarities by the ERIC-PCR amplification technique in a Brazilian hospital [14]. Of note, these findings were comparable to those in this present study, in which close relatedness were found in 3 cluster-pair patterns of *Acinetobacter baumannii* isolates recovered from aspirate, wound and urine, and 2 cluster-pair *Pseudomonas aeruginosa* isolates from urine and wound specimens. Interestingly, the relatedness was identified in the same hospital, Korle Bu Teaching Hospital in the Greater Accra region. The significance of the findings attest to the fact that the hospital is the largest hospital in the study, receives the largest number of patients and serves as the largest tertiary and referral centre in the whole country. However, close relatedness of ERIC-PCR fingerprints was unexpectedly observed between the 2 PCR-positive OXA-48 *Klebsiella pneumoniae* isolates since both were recovered from different hospitals, AGMH and ENRH, while the sample sites were also different, sputum and wound isolates, respectively.

The findings presented here suggest high genetic diversity existed among the CR isolates. However, these isolates may have harboured other unknown resistance genes that can potentially cause cross-transmission, together with the small number of positive NDM-1 *Acinetobacter* and VIM-1 *Pseudomonas aeruginosa* isolates identified as closely related in cluster-pair patterns by ERIC-PCR fingerprints. These resistance genes are emerging in Ghana and further infection control measures may need to be implemented in this care facility in the future to counter this threat. The significance of the genetic relatedness of the few cluster-pairs identified by ERIC-PCR has given an indication of the relatedness of carbapenemase genes in dissemination. Besides the common ESBLs (TEM-1 and SHV-1) detected, various banding patterns may be associated with other antimicrobial resistance genes. It is noteworthy and of concern, that large numbers of *Acinetobacter* and *Pseudomonas* CR isolates were negative on the PCR assay and may possibly be associated with non-carbapenemase-related resistance features or unknown resistance genes that can also disseminate into different bacterial isolates within the same health-care facility. Further studies on non-carbapenemase-related resistance need to be systematically carried out in this region.

Multiple plasmid bands in these nosocomial non-fermenting pathogens were observed in this study. These plasmids have the capacity to harbour many resistance genes, making them a clinical concern as well as a potential public health threat. The multi-resistant nature of these bacterial pathogens to commercially available antimicrobials subsequently renders their treatment extremely challenging. Of clinical significance is the emergence of plasmid-encoded AmpC cephalosporinases. These AmpC enzymes are contributors to carbapenem-resistance that may be present in those isolates of *Acinetobacter baumannii* and *Pseudomonas aeruginosa* that were negative on the carbapenemase PCR. The production of AmpC enzymes may be implicated in both carbapenemase-positive producers and CR isolates without a genetically identified locus, and may have the ability to spread to other clinically relevant pathogens in the same hospital setting.



There are a few limitations of the study. Firstly, we did not screen for all known genes that contribute to carbapenem resistance. Secondly, we could not carry out performance characteristics of the PCR assay used to test for carbapenemase genes.

In conclusion, ERIC-PCR fingerprints have shown a great diversity among the species of Gram-negative bacterial pathogens and specimen collection sites in this study. There was a small number of cluster-pairs from both carbapenemase-positive gene carriers and CR isolates without a genetically identified locus that exhibited close genetic relatedness, particularly in *Acinetobacter baumannii* and *Pseudomonas aeruginosa* isolates. These study findings underpin the need to implement stringent and preventive measures to control resistance-gene dissemination into the Ghanaian population.

## Acknowledgments

The authors thank laboratories of the hospitals in Ghana that contributed bacteria isolates to this study and also acknowledge the technical support provided by the Microbiology Laboratory of Sheffield-Hallam University.

## Author Contributions

**Conceptualization:** Francis S. Codjoe, Thomas J. Smith, Keith Miller, Eric S. Donkor.

**Data curation:** Charles A. Brown.

**Formal analysis:** Francis S. Codjoe, Charles A. Brown, Keith Miller.

**Investigation:** Francis S. Codjoe, Charles A. Brown, Thomas J. Smith, Eric S. Donkor.

**Methodology:** Francis S. Codjoe, Charles A. Brown, Keith Miller, Eric S. Donkor.

**Project administration:** Keith Miller.

**Software:** Charles A. Brown.

**Supervision:** Charles A. Brown, Thomas J. Smith, Eric S. Donkor.

**Validation:** Charles A. Brown.

**Writing – original draft:** Francis S. Codjoe, Charles A. Brown, Thomas J. Smith, Keith Miller, Eric S. Donkor.

**Writing – review & editing:** Francis S. Codjoe, Thomas J. Smith, Keith Miller, Eric S. Donkor.

## References

1. Moosavian M, Emam N. The first report of emerging mobilized colistin-resistance (*mcr*) genes and ERIC-PCR typing in *Escherichia coli* and *Klebsiella pneumoniae* clinical isolates in southwest Iran. *Infect Drug Resist.* 2019; 12:1001–1010. <https://doi.org/10.2147/IDR.S192597> PMID: 31118706
2. Londero A, Costa M, Sucari A, Leotta G. Comparison of three molecular subtyping techniques for *Listeria monocytogenes*. *Rev Argent Microbiol.* 2019 pii: S0325-7541(19)30004-5.
3. Guimarães Ade S, Dorneles EMS, Andrade GI, Lage AP, Miyoshi A, Azevedo V, et al. Molecular characterization of *Corynebacterium pseudotuberculosis* isolates using ERIC-PCR. *Vet Microbiol.* 2011; 153(3–4):99–306.
4. Munoz V, Ibanez F, Tonelli ML, Valetti L, Anzuay MS, Fabra A. Phenotypic and phylogenetic characterization of native peanut Bradyrhizobium isolates obtained from Cordoba, Argentina. *Syst Appl Microbiol.* 2011; 34(6):446–452. <https://doi.org/10.1016/j.syapm.2011.04.007> PMID: 21742454
5. Rai S, Das D, Niranjana DK, Singh NP, Kaur IR. Carriage prevalence of carbapenem-resistant Enterobacteriaceae in stool samples: a surveillance study. *Australas Med J.* 2014; 7(2):64–67. <https://doi.org/10.4066/AMJ.2014.1926> PMID: 24611074

6. Durmaz S, Bal EBB, Gunaydin M, Erkan Yula E, Percin D. Detection of  $\beta$ -lactamase genes, ERIC-PCR typing and phylogenetic groups of ESBL producing quinolone resistant clinical *Escherichia coli* isolates. *Biomed Res-India*. 2015; 26(1):43–50.
7. Bakhshi B, Afshari N, Fallah F. Enterobacterial Repetitive intergenic consensus (ERIC)-PCR Analysis as a reliable evidence for suspected *Shigella* spp. outbreaks. *Braz J Microbiol*. 2018; 49(3):529–533. <https://doi.org/10.1016/j.bjm.2017.01.014> PMID: 29482996
8. Khor WC, Pua SM, Koh TH, Tan JAMA, Puthuchery SD, Chua KH. Comparison of Clinical Isolates of *Aeromonas* from Singapore and Malaysia with Regard to Molecular Identification, Virulence, and Antimicrobial Profiles. *Microb Drug Resist*. 2018; 24(4):469–478. <https://doi.org/10.1089/mdr.2017.0083> PMID: 29461928
9. Sivakumar M, Dubal ZB, Kumar A, Bhilegaonkar K, Vinodh Kumar OR, Kumar S, Kadwalia A, Shagufta B, Grace MR, Ramees TP, Dwivedi A. Virulent methicillin resistant *Staphylococcus aureus* (MRSA) in street vended foods. *J Food Sci Technol*. 2019; 56(3):1116–1126. <https://doi.org/10.1007/s13197-019-03572-5> PMID: 30956291
10. Wei X, Jian-Zhong W, Xiao-Hui H, Zong-Jun Y, Pei S, Yu L. The research of KRG serotyping and ERIC-PCR and PCR-RFLP genotyping of *Haemophilus parasuis* isolates from Anhui Province of China. *J Anim Vet Adv*. 2011; 10(20):2669–2674.
11. Aljindan R, Alsamman K, Elhadi N. ERIC-PCR genotyping of *Acinetobacter baumannii* isolated from different clinical specimens. *Saudi J Med Med Sci*. 2018; 6:13–17. [https://doi.org/10.4103/sjms.sjms\\_138\\_16](https://doi.org/10.4103/sjms.sjms_138_16) PMID: 30787810
12. Urban C, Segal-Maurer S, Rahal JJ. Considerations in the control and treatment of hospital infections due to *Acinetobacter baumannii*. *Clin Infect Dis*. 2003; 36(10):1268–1274. PMID: 12746772
13. Nigro SJ, Post V, Hall RM. Aminoglycoside resistance in multiply antibiotic-resistant *Acinetobacter baumannii* belonging to global clone 2 from Australian hospitals. *J Antimicrob Chemother*. 2011; 66(7):1504–1509. <https://doi.org/10.1093/jac/dkr163> PMID: 21586593
14. Siqueira VLD, Cardoso RF, Pádua RAF, Caleffi-Ferracioli KR, Helbel C, Santos ACB, et al. High genetic diversity among *Pseudomonas aeruginosa* and *Acinetobacter* spp. isolated in a public hospital in Brazil. *Braz. J. Pharm. Sci*. 2013; 49(1):49–56.
15. Freeman R, Moore LSP, Charlett A, Donaldson H, Holmes AH. Exploring the epidemiology of carbapenem-resistant Gram-negative bacteria in west London and the utility of routinely collected hospital microbiology data. *J Antimicrob Chemother*. 2015; 70(4):1212–1218. <https://doi.org/10.1093/jac/dku500> PMID: 25525198
16. Kateete DP, Nakanjako R, Okee M, Joloba ML, Najjuka CF. Genotypic diversity among multidrug resistant *Pseudomonas aeruginosa* and *Acinetobacter* species at Mulago Hospital in Kampala, Uganda. *BMC Res Notes*. 2017; 10:284. <https://doi.org/10.1186/s13104-017-2612-y> PMID: 28705201
17. Armand-Lefèvre L, Angebault C, Barbier F, Hamelet E, Defrance G, Ruppé E, et al. Emergence of imipenem-resistant Gram-negative bacilli in intestinal flora of intensive care patients. *Antimicrob Agents Chemother*. 2013; 57(3):1488–1495. <https://doi.org/10.1128/AAC.01823-12> PMID: 23318796
18. Meletis G. Carbapenem resistance: overview of the problem and future perspectives. *Ther Adv Infect Dis*. 2016; 3(1):15–21. <https://doi.org/10.1177/2049936115621709> PMID: 26862399
19. Poirel L, Walsh TR, Cuvillier V, Nordmann P. Multiplex PCR for detection of acquired carbapenemase genes. *Diagn Microbiol Infect Dis*. 2011; 70:119–123. <https://doi.org/10.1016/j.diagmicrobio.2010.12.002> PMID: 21398074
20. Schlesinger J, Navon-Venezia S, Chmelnitsky I, Hammer-Münz O, Leavitt A, Gold HS, et al. Extended-Spectrum Beta-Lactamases among *Enterobacter* Isolates Obtained in Tel Aviv, Israel. *Antimicrob Agents Chemother*. 2005; 49:1150–1156. <https://doi.org/10.1128/AAC.49.3.1150-1156.2005> PMID: 15728917
21. Ye Y, Wu Q, Yao L, Dong X, Wu K, Zhang J. Analysis of a consensus fragment in ERIC-PCR fingerprinting of *Enterobacter sakazakii*. *Int J Food Microbiol*. 2009; 132(2–3):172–175. <https://doi.org/10.1016/j.jfoodmicro.2009.03.018> PMID: 19427046
22. Abdalhamid B, Elhadi N, Alabdulqader N, Alsamman K, Aljindan R. Rates of gastrointestinal tract colonization of carbapenem-resistant Enterobacteriaceae and *Pseudomonas aeruginosa* in hospitals in Saudi Arabia. *New Microbes New Infect*. 2016; 10(C):77–83.
23. Bassetti M, Ginocchio F, Mikulska M. New treatment options against Gram-negative organisms. *Crit Care*. 2011; 15(2):215. <https://doi.org/10.1186/cc9997> PMID: 21457501
24. Nordmann P, Poirel L. The difficult-to-control spread of carbapenemase producers in Enterobacteriaceae worldwide. *Clin Microbiol Infect*. 2014; 20(9):821–830. <https://doi.org/10.1111/1469-0691.12719> PMID: 24930781

25. Stehling EG, Leite DS, Silveira WD. Molecular typing and biological characteristics of *Pseudomonas aeruginosa* isolated from cystic fibrosis patients in Brazil. *Braz J Infect Dis*. 2010; 14(5):462–467. PMID: [21221474](#)
26. Kaase M, Nordmann P, Wichelhaus TA, Gatermann SG, Bonnin RA, Poirel L. NDM-2 carbapenemase in *Acinetobacter baumannii* from Egypt. *J Antimicrob Chemother*. 2011; 66(6):1260–1262. <https://doi.org/10.1093/jac/dkr135> PMID: [21427107](#)
27. Diene SM, Rolain JM. Carbapenemase genes and genetic platforms in Gram-negative bacilli: Enterobacteriaceae, *Pseudomonas*, and *Acinetobacter* species. *Clin Microbiol Infect*. 2014; 20(9):831–838. <https://doi.org/10.1111/1469-0691.12655> PMID: [24766097](#)
28. Mathlouthi N, Areig Z, Al Bayssari C, Bakour S, El Salabi AA, Gwierif SB, et al. Emergence of carbapenem-resistant *Pseudomonas aeruginosa* and *Acinetobacter baumannii* clinical isolates collected from some Libyan hospitals. *Microb Drug Resist*. 2015; 21(3): 335–341. <https://doi.org/10.1089/mdr.2014.0235> PMID: [25587875](#)
29. Hewitt KM, Mannino FL, Gonzalez A, Chase JH, Caporaso JG, Knight R, et al. Bacterial diversity in two neonatal intensive care units (NICUs). *PLoS One*. 2013; 8(1):e54703. <https://doi.org/10.1371/journal.pone.0054703> PMID: [23372757](#)
30. Berezin EN, Solórzano F, Latin America Working Group on Bacterial Resistance. Gram-negative infections in pediatric and neonatal intensive care units of Latin America. *J Infect Dev Ctries*. 2014; 8(8):942–953. <https://doi.org/10.3855/jidc.4590> PMID: [25116658](#)
31. Bush K, Jacoby GA. Updated functional classification of  $\beta$ -lactamases. *Antimicrob Agents Chemother*. 2010; 54(3):969–976.
32. Roca I, Espinal P, Vila-Farrés X, Vila J. The *Acinetobacter baumannii* oxymoron: commensal hospital dweller turned pan-drug-resistant menace. *Front Microbiol*. 2012; 3:148. <https://doi.org/10.3389/fmicb.2012.00148> eCollection 2012. PMID: [22536199](#)