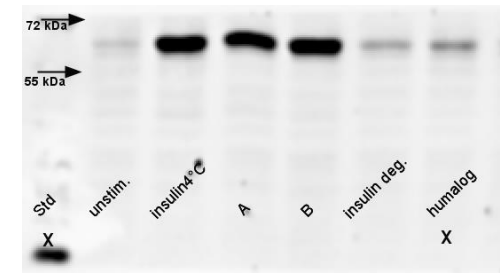
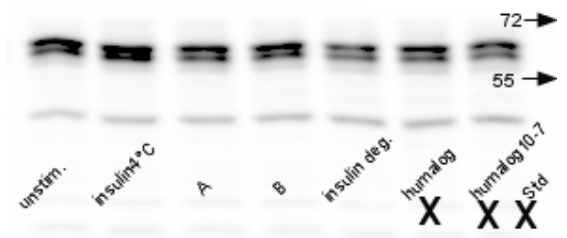


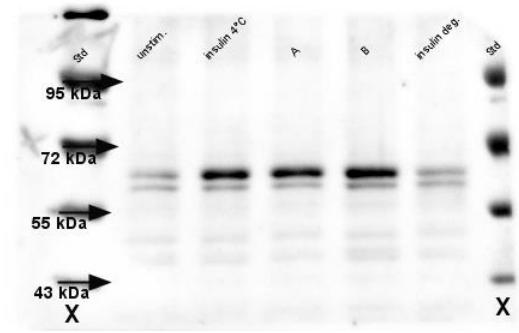
Gel 3c Akt HepG2



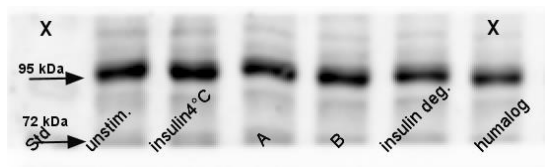
Gel 4c P Akt HepG2



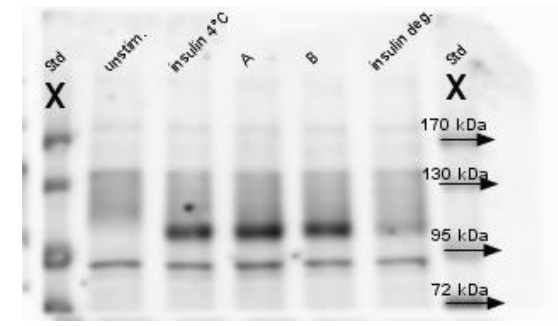
Gel 3c Akt Huh7



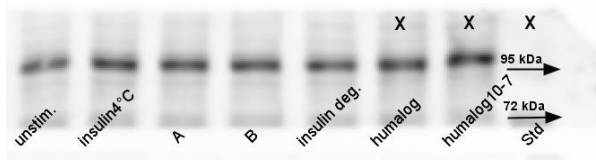
Gel 11 P Akt Huh7



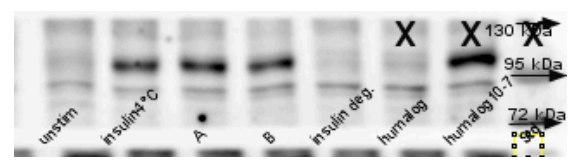
Gel 4b IR HepG2



Gel 8a P IR HepG2



Gel 4b IR Huh7



Gel 3b P IR Huh7

Labels:

- "X" is linked to any lane which remains unused in the final Figure
- Std = protein ladder
- "unstim" = cell line (either HepG2 or Huh7) with no stimulation using mixed insulin
- "Insulin 4°C" is mixed insulin constantly stored at 4°C as recommended by the manufacturer
- "A" is mixed insulin kept 4 weeks at RT in Kenya, at a patient's home,
- "B" is mixed insulin which underwent continuous T° variations between 25 and 37°C for 12 weeks
- "insulin deg." is mixed insulin degraded 60 min at 115°C
- "Humalog" is cell line stimulated with Humalog insulin 15 min at 10⁻⁸ M (control)
- "Humalog 10⁻⁷" is cell line stimulated with Humalog 15 min at 10⁻⁷ M (control)

Methods:

- Detection by luminescence, using ECL select as reagent (Ref. N°: RPN 2235, from Amersham)
- Acquisition software : GeneSys
- System : Pxi6 (Syngene)
- Format : sgd and tiff
- TIFF Images labelling software : ImageJ application Fiji
- Protein standard : Page Ruler Prestained Protein ladder (Ref. N° : 26616, from Thermo scientific)