

Raw Figure 1: Confirmation of the recombinant plasmid [L1 and L6: 1kb DNA ladder, L2: Uncut plasmid, L3: Double digested (NdeI and SalI) plasmid, L4: Single digested (NdeI) plasmid, L5: Single digested (SalI) plasmid]

Raw Figure 2: Presence of *cmVip3Aa* in transgenic chickpea lines

(a) PCR amplification of *cmVip3Aa* gene segment [L1: 1kb DNA ladder, L2: Control (DCP 92-3), L3: VPS 13, L4: VPS 14, L5: VPS 47, L6: VPS 57, L7: VPS 66, L8: VPS 77, L9: No template control (NTC), L10: Negative segregant of VPS 66, L11 Positive control (Recombinant Plasmid);

(b) Genomic Southern blotting after single digestion (*SalI*) [L1: DNA molecular weight marker II, DIG-labeled L2: VPS 13, L3: VPS 14, L4: VPS 47, L5: VPS 57, L6: VPS 66, L7: VPS 77, L8: Control (DCP 92-3), L9: Positive control (Recombinant Plasmid)]

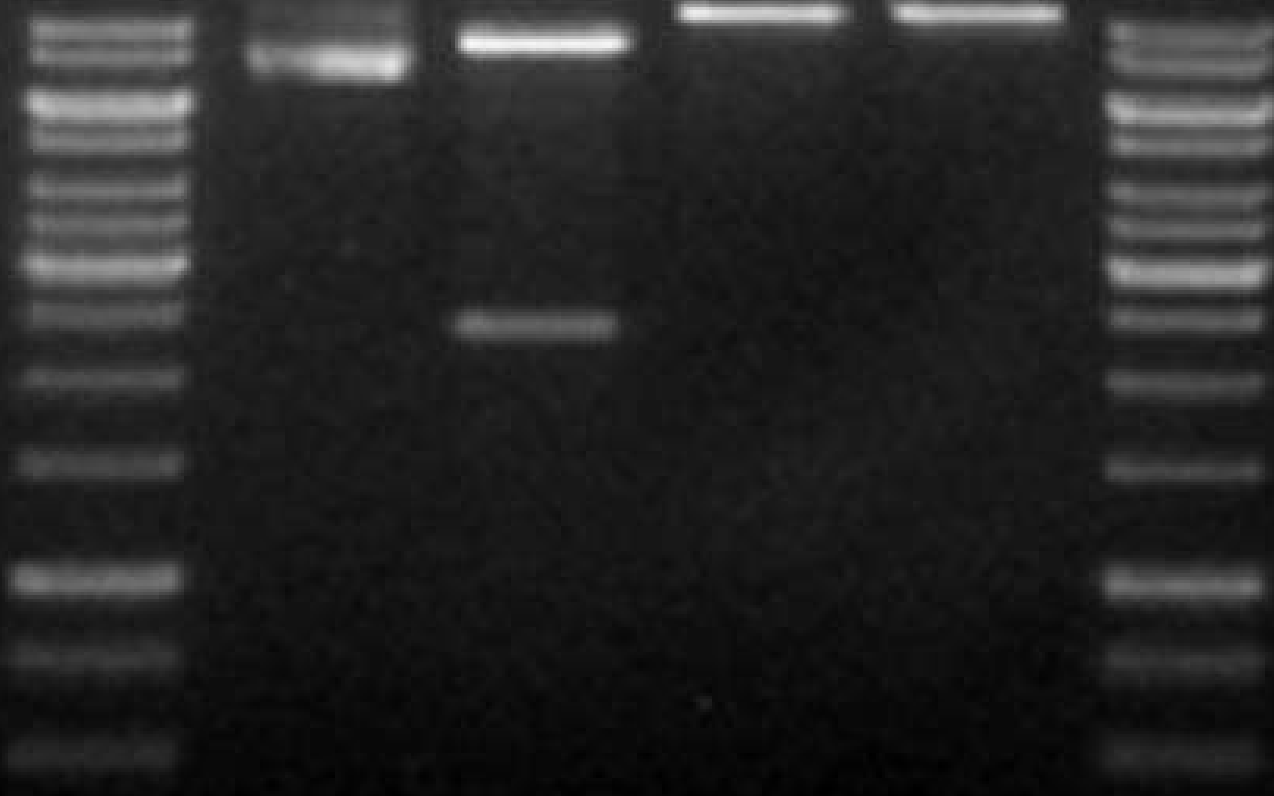
Raw Figure 3: Expression of *cmVip3Aa* in transgenic chickpea lines

(a) RT-PCR for *cmVip3Aa* transcript (78 bp) in the transgenic chickpea lines [L1: 1 kb plus DNA ladder, L2: No Template Control L3& L4: VPS 14, L5: VPS 47, L6: VPS 57, L7: VPS 66, L8 and L9: VPS 77, L10: Control (DCP 92-3)]

(b) RT-PCR for internal control, *IF4 α* transcript (60 bp) in same lane order, as above

Raw Figure 5: Full length blots of Genomic Southern blotting after double digestion (*NdeI* and *SalI*) [L1: DNA molecular weight marker II, DIG-labeled, L2: VPS 13, L3: VPS 14, L4: VPS 47, L5: VPS 57, L6: VPS 66, L7: VPS 77, L8: Control (DCP 92-3), L9: Positive control (Recombinant Plasmid)]

X **1** **2** **3** **4** **5** **6**

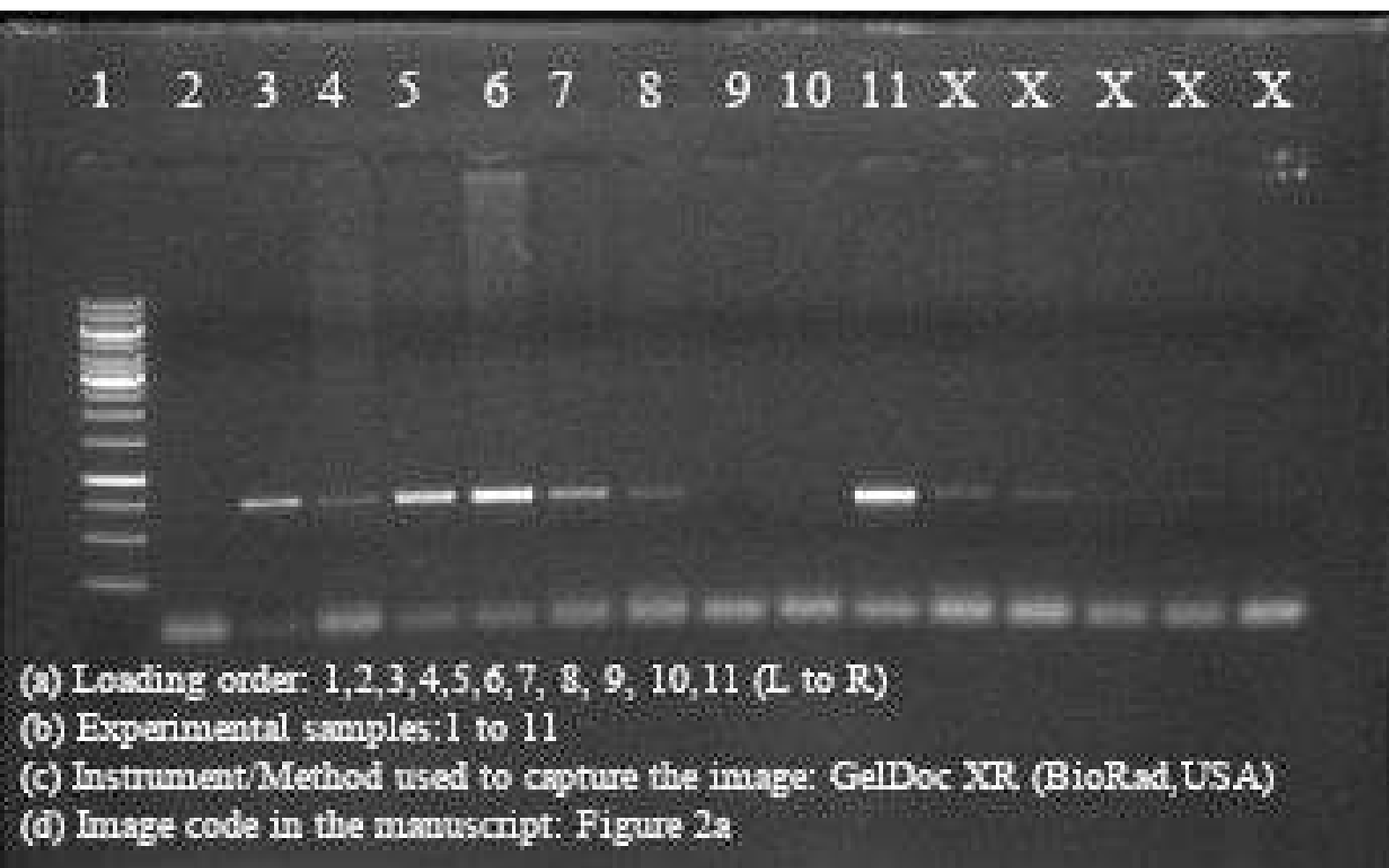


(a) Loading order: 1, 2, 3, 4, 5, 6 (L to R)

(b) Experimental samples: 1 to 6

(c) Instrument/Method used to capture the image: GelDoc XR (BioRad, USA)

(d) Image code in the main manuscript: Figure not part of the main manuscript, available as Supplementary figure 1



1 2 3 4 5 6 7 8 9

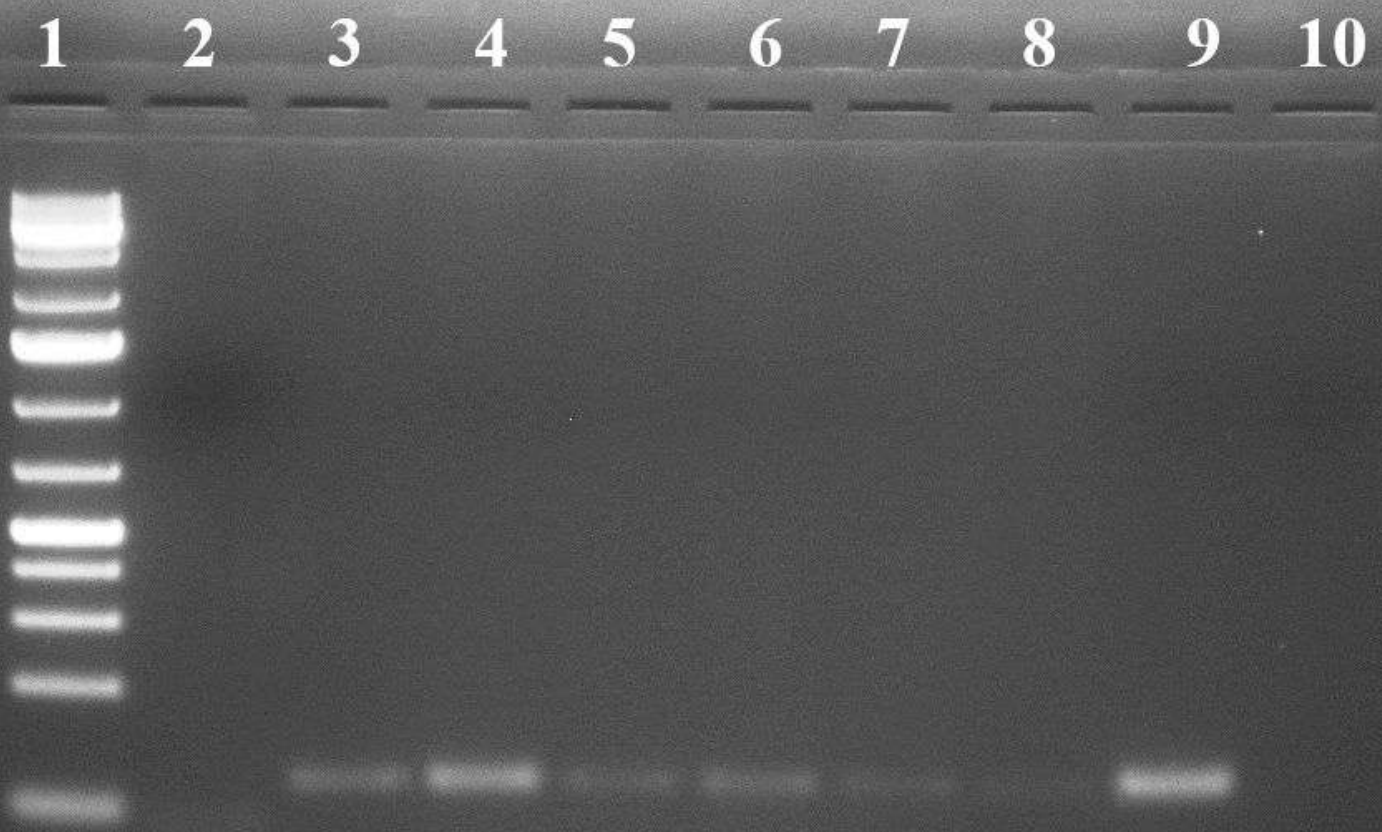


(a) Loading order: 1, 2, 3, 4, 5, 6, 7, 8, 9 (Lto R)

(b) Experimental samples: 1 to 9

(c) Instrument/Method used to capture the image: SONY CyberShot 18.2 MP (DSC-HX200V) camera

(d) Image code in the manuscript: Figure 2b



- (a) Loading order: 1, 2, 3, 4, 5, 6, 7, 8, 9, 10 (L to R)
- (b) Experimental samples: 1 to 10
- (c) Instrument/Method used to capture the image: GelDoc XR (BioRad, USA)
- (d) Image code in the manuscript: Figure 3a (Upper panel)

1 2 3 4 5 6 7 8 9 10 X X



- (a) Loading order: 1, 2, 3, 4, 5, 6, 7, 8, 9, 10 (L to R)
- (b) Experimental samples: 1 to 10
- (c) Instrument/Method used to capture the image: GelDoc XR (BioRad, USA)
- (d) Image code in the manuscript: Figure 3a (Lower panel)

1 2 3 4 5 6 7 8 9



(a) Loading order: 1, 2, 3, 4, 5, 6, 7, 8, 9 (L to R)

(b) Experiment samples: 1 to 9

(c) Instrument/Method used to capture the image: SONY CyberShot 18.2 MP (DSC-HX200V) camera

(d) Image code in the manuscript (MS): Figure not part of the main manuscript, available as Supplementary figure 5

Raw for Supplementary Figure 4: Gel Image for PCR analysis of lines derived from VPS14.105 [L1: DNA Ladder, L2-L21: T2 progenies, L22: Control (DCP 92-3), L23: No Template Control (NTC); L24: Positive control (Recombinant Plasmid)]

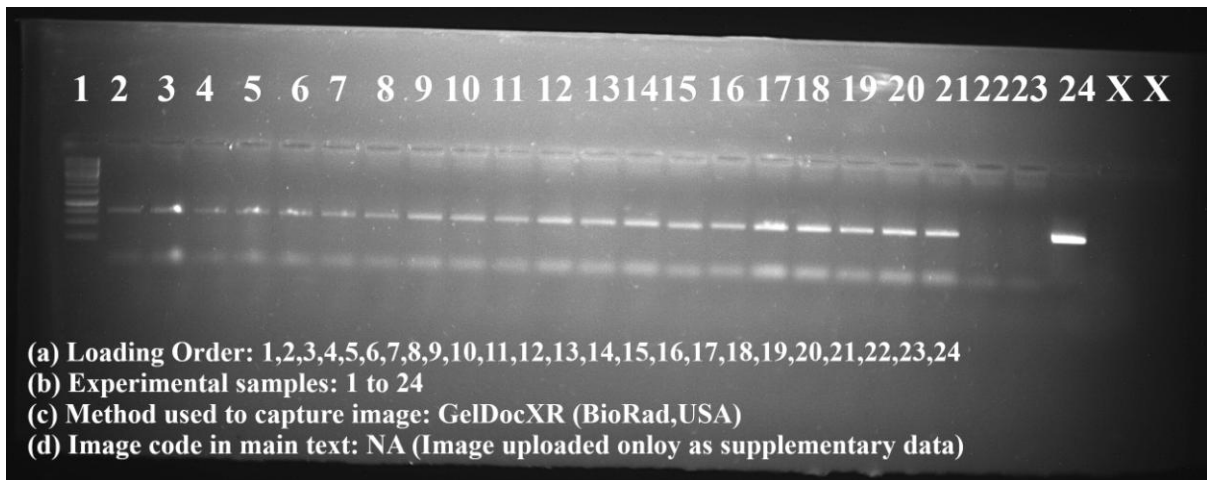
Raw for Supplementary Figure 5: Gel Image for PCR analysis of lines derived from VPS47.317 [L1: DNA Ladder, L2-L18: T2 progenies, L19: Control (DCP 92-3), L20: No Template Control (NTC); L21: Positive control (Recombinant Plasmid)]

Raw for Supplementary Figure 6: Gel Image for PCR analysis of lines derived from VPS57.371 [L1: DNA Ladder, L2-L21: T2 progenies, L22: Control (DCP 92-3), L23: No Template Control (NTC); L24: Positive control (Recombinant Plasmid)]

Raw for Supplementary Figure 7: Gel Image for PCR analysis of lines derived from VPS66.405 [L1: DNA Ladder, L2-L23: T2 progenies, L24: Control (DCP 92-3), L25: No Template Control (NTC); L26: Positive control (Recombinant Plasmid)]

Raw for Supplementary Figure 8: Gel Image for PCR analysis of lines derived from VPS77.421 [L1: DNA Ladder, L2-L22: T2 progenies, L23: Control (DCP 92-3), L24: No Template Control (NTC); L25: Positive control (Recombinant Plasmid)]

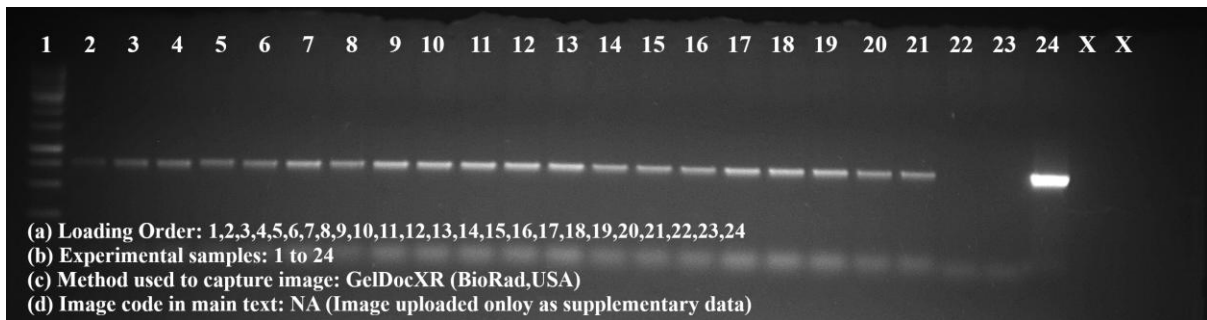
Raw Image for Supplementary Figure 4



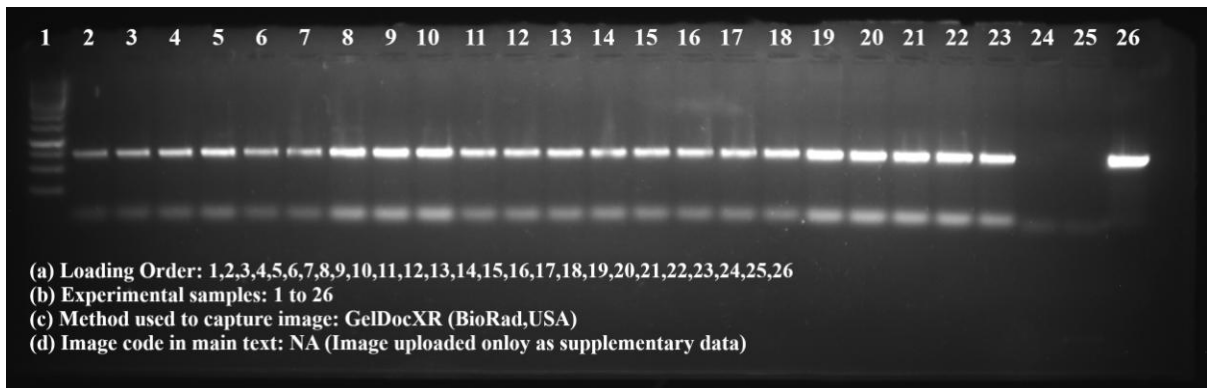
Raw Image for Supplementary Figure 5



Raw Image for Supplementary Figure 6



Raw Image for Supplementary Figure 7



Raw Image for Supplementary Figure 8

