

1 **Title**

2 Better late than never: optimising the proteomic analysis of field-collected octopus

3

4 **Authors**

5 Qiaz Q.H. Hua, Clifford Young, Tara L. Pukala, Peter Hoffmann, Jasmin C. Martino,
6 Bronwyn M. Gillanders, Zoe A. Doubleday

7

8 **Supplementary Material**

9 **Method of Image Capture:**

10 Samples were loaded into a pre-cast NuPAGE™ 4 to 12% Bis-Tris polyacrylamide
11 gel (Thermo Fisher Scientific). Gels were run at 180 V for 60 min and fixed briefly
12 before staining overnight with Coomassie Brilliant Blue G-250 (Sigma Aldrich,
13 Burlington, USA). Upon de-staining with Milli-Q water, the gels were imaged on a
14 GelDoc Imaging System (Bio-Rad, Hercules, USA).

15

16 **Legend:**

17 WoR0: Sample without RNAlater (0h)

18 WoR3: Sample without RNAlater at 4C (3h)

19 WoRT3: Sample without RNAlater at room temp (3h)

20 WoR6: Sample without RNAlater (6h)

21 WoRT6: Sample without RNAlater at room temp (6h)

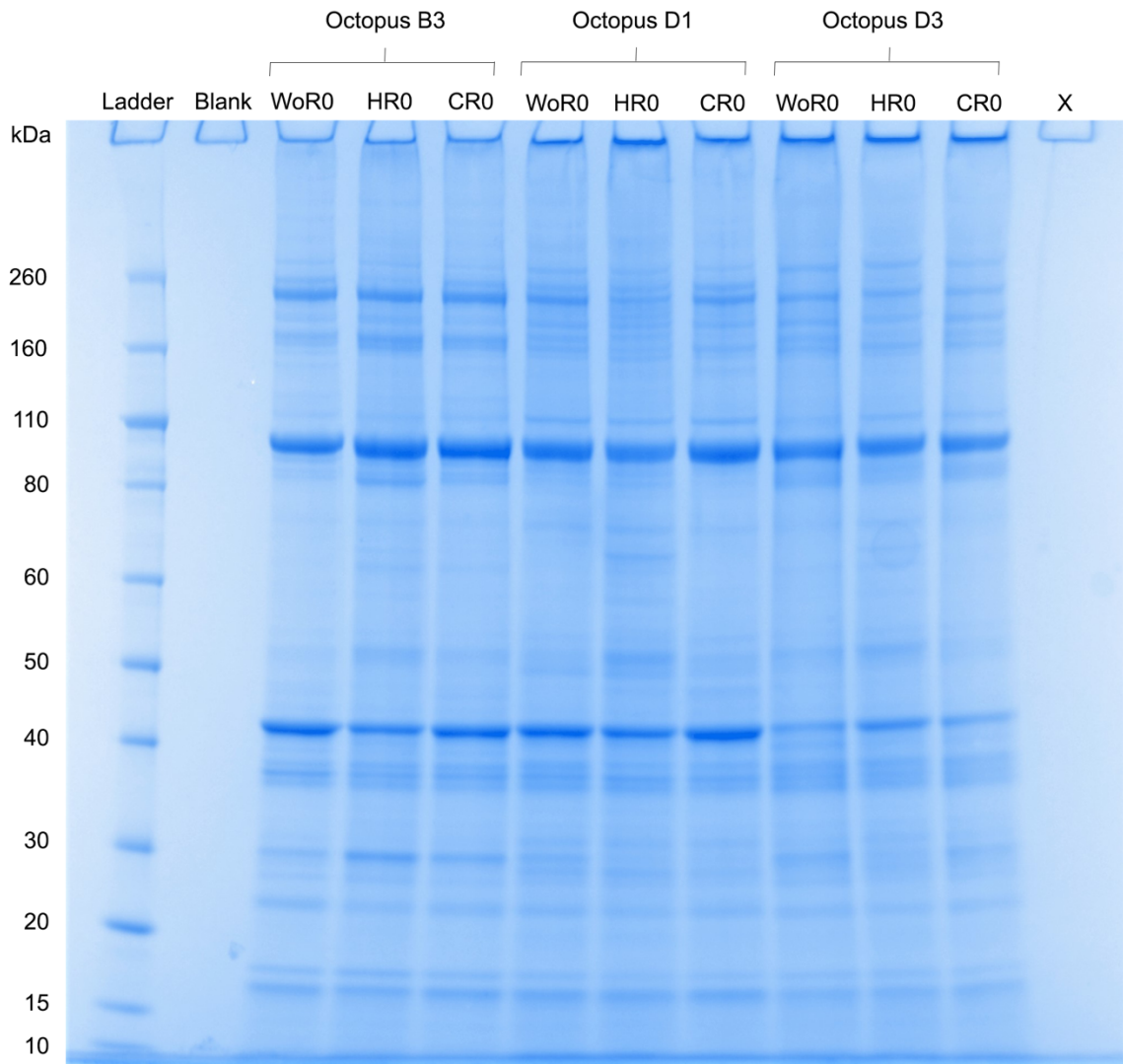
22 HR0: Sample with RNAlater (0h)

23 HR3: Samples with RNAlater at 4C (3h)

24 HR6: Sample with RNAlater at 4C (6h)

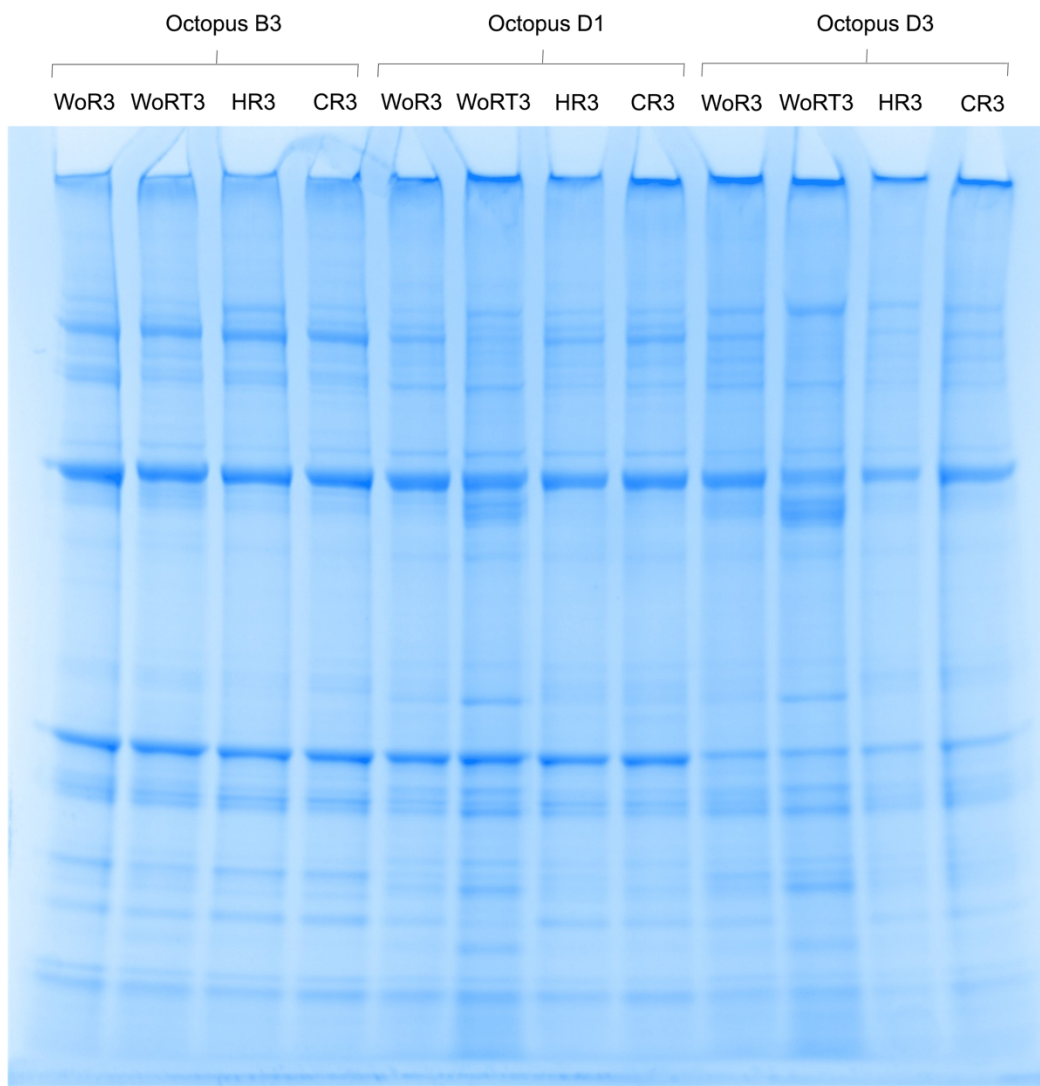
25 CR0: Sample with commercial RNAlater (0h)

26 CR3: Samples with RNAlater at 4C (3h)
27 CR6: Sample with commercial RNAlater at 4C (6h)
28



29
30 **Fig S1a.** Original gel image corresponding to Fig 2a in the main text.

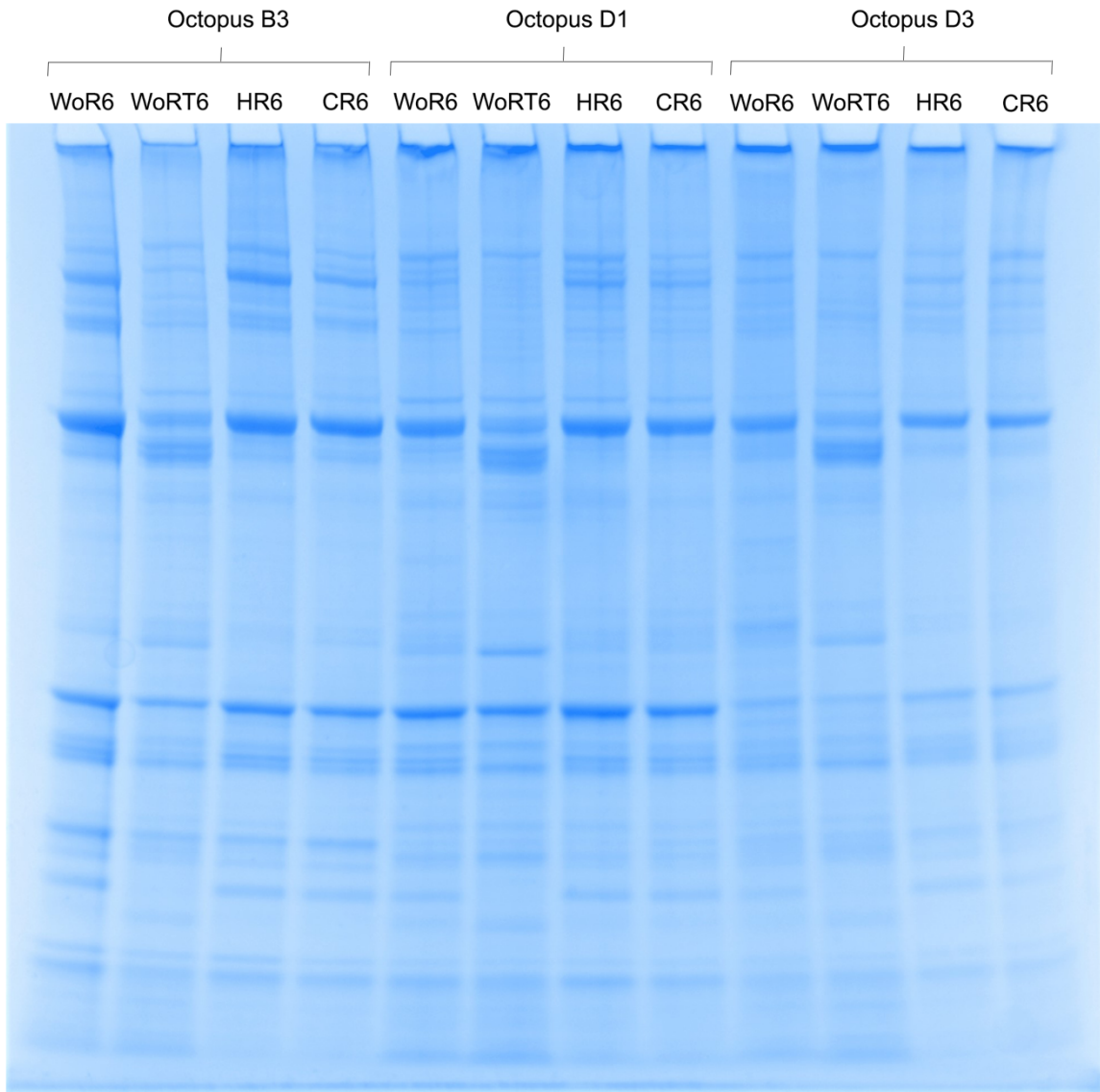
31
32



33

34 **Fig S1b.** Original gel image corresponding to Fig 2b in the main text.

35



36

37 **Fig S1c.** Original gel image corresponding to Fig 2c in the main text.