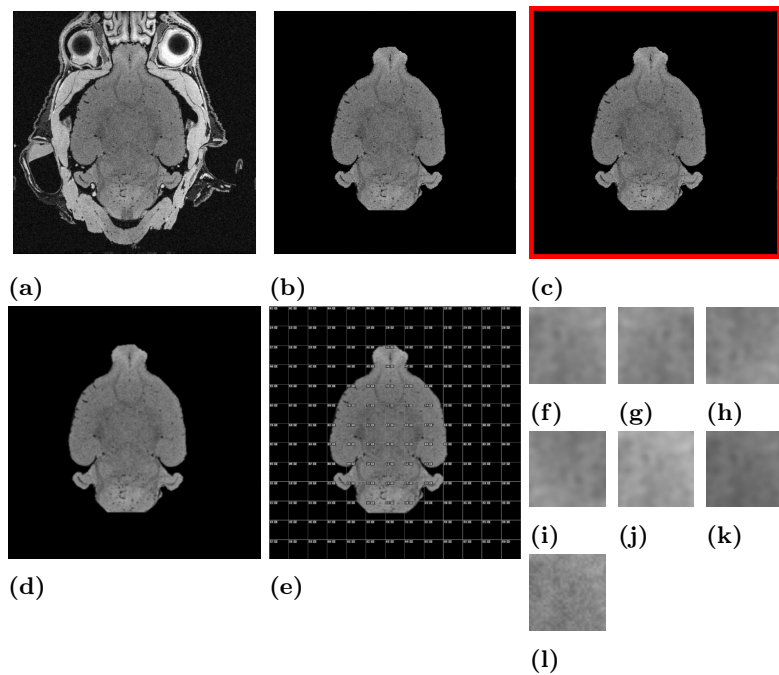


## Appendix



**Fig 8.** This figure shows the individual results after every step of the pre-processing pipeline. It is based on one  $400 \times 400$  pixels sample layer (a) of the image stack from Figure 1 with (b) showing the cropped brain based on the given brain mask, (c) the padded version with a size of  $416 \times 416$  pixels (red color is only used for visualizing the additional area, which is actually black), (d) the blurred version using a Gaussian blur with  $\sigma = 0.5$  (refer to zoomed-in digital version to see differences) and (e) the marked 169 patches with a size of  $32 \times 32$  pixels each. Figure (f) shows samplewise one layer of a patch that is augmented using randomly applied methods such as (g) horizontal flip, (h) vertical flip, (i) diagonal flip, (j) brightening up, (k) darkening and (l) applying a noise.