



Ltl Acorn 0017 ○ 086F 030C 04/22/2024 13:56:05



Ltl Acorn 0020 ○ 082F 028C 04/23/2024 14:54:49



Ltl Acorn 0020 ○ 075F 024C 04/22/2024 12:36:08



Ltl Acorn 0002 ● 051F 0111 04/23/2024 12:06:17



Ltl Acorn 0022 ○ 066F 019C 04/22/2024 13:19:19



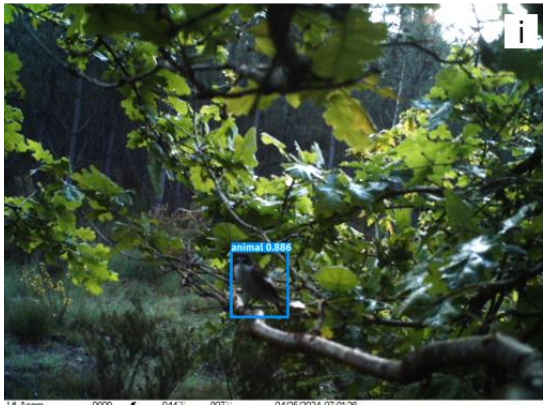
Ltl Acorn 0015 ● 057F 0411 04/24/2024 16:44:56



Ltl Acorn 0009 ● 052F 0111 04/24/2024 17:36:42



Ltl Acorn 0009 ● 044F 0071 04/25/2024 06:46:21







Ltl Acorn 0017 ● 066F 019C 05/07/2024 17:19:34



Ltl Acorn 0003 ○ 051F 011C 05/07/2024 02:23:28



Ltl Acorn 0019 ● 062F 017C 05/07/2024 19:48:25



Ltl Acorn 0008 ○ 057F 011C 05/07/2024 12:46:48



Ltl Acorn 0006 ○ 000F 010C 05/07/2024 10:02:37



Ltl Acorn 0018 ● 053F 012C 05/08/2024 09:29:50

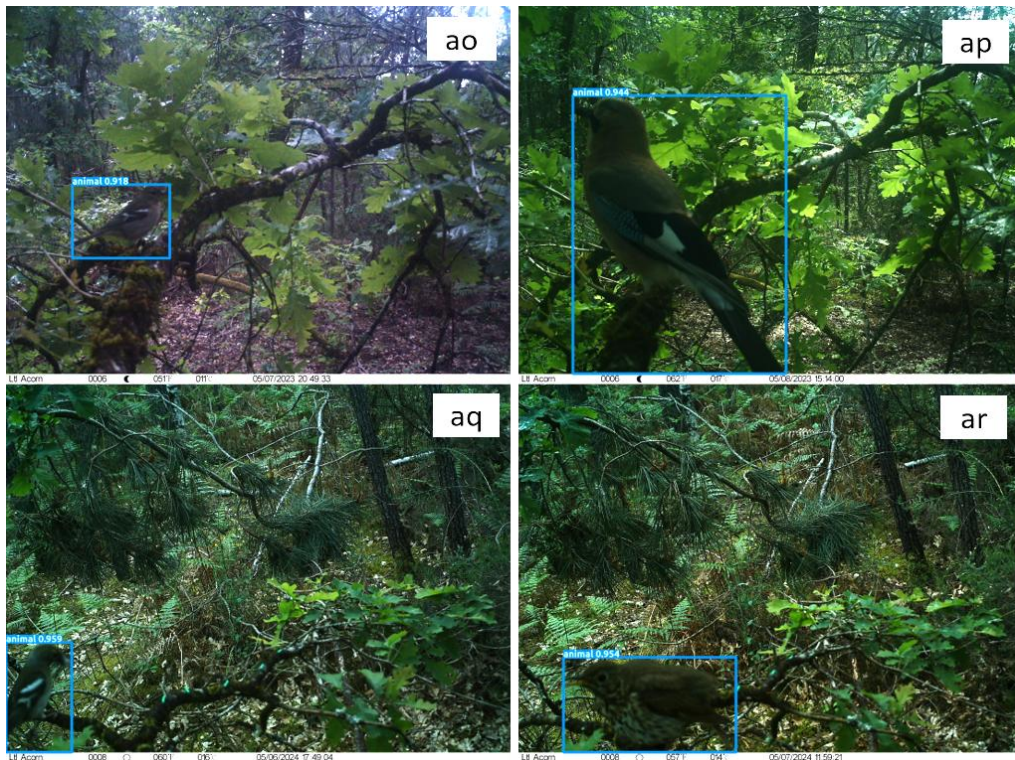


Ltl Acorn 0021 ● 057F 014C 05/06/2024 19:51:11



Ltl Acorn 0010 ○ 055F 015C 05/07/2024 09:06:51





S4 Fig. All detected birds by MegaDetector AI software.

Camera traps photographs of potential predators of caterpillars. The blue squares correspond to MegaDetector detections with the associated confidence level. The animal species included are: the Long-tailed Tit (*Aegithalos caudatus*, S4a and S4ag Figs), the Tree Pipit (*Anthus trivialis*, S4c and S4k Figs), the Common Chiffchaff (*Phylloscopus collybita*, S4b and S4g Figs), the European Robin (*Erithacus rubecula*, S4d, S4f, S4j, S4o, S4p, S4q, S4s, S4ab, and S4ad Figs), the Eurasian Jay (*Garrulus glandarius*, S4e, S4l, S4r, S4y, S4af, S4ak, S4an, and S4ap Figs), the European Pied Flycatcher (*Ficedula hypoleuca*, S4h and S4i Fig.), the Red Squirrel (*Sciurus vulgaris*, S4m Fig), the Eurasian Blue Tit (*Cyanistes caeruleus*, S4n and S4am Figs), the Great Tit (*Parus major*, S4t, S4v, S4w, S4aa, S4ac, S4ah and S4ai Figs), the Common Chaffinch (*Fringilla coelebs*, S4u, S4x, S4ae, S4aj, S4al, S4ao and S4aq Figs), unidentified rodents (S4z Fig), and the Song Trush (*Turdus philomelos*, S4ar Fig).