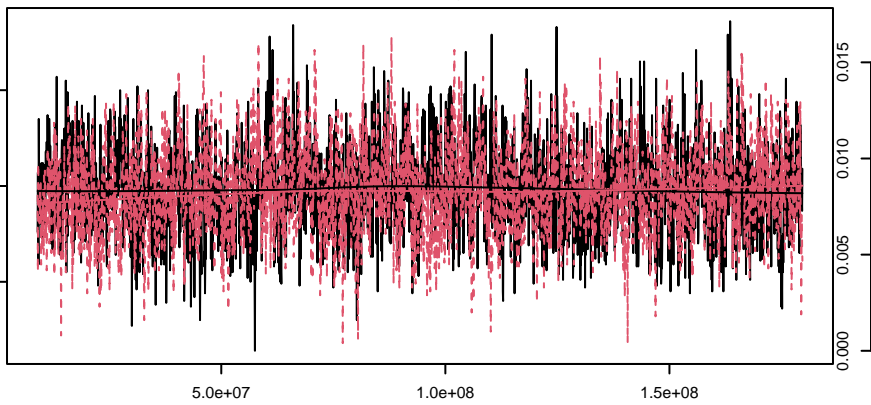
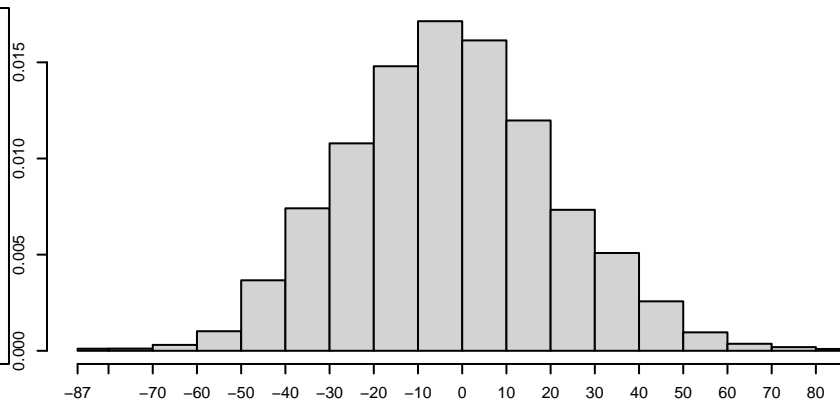
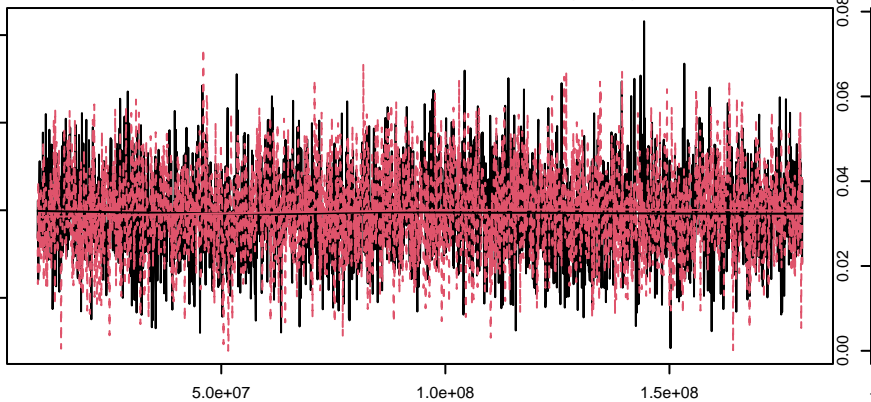
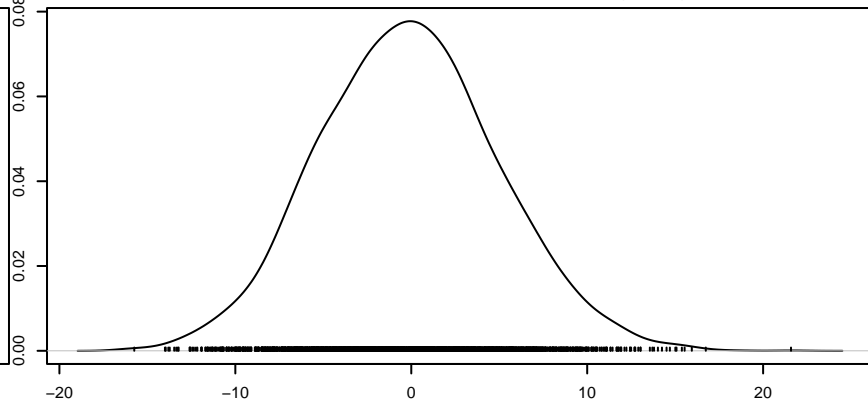
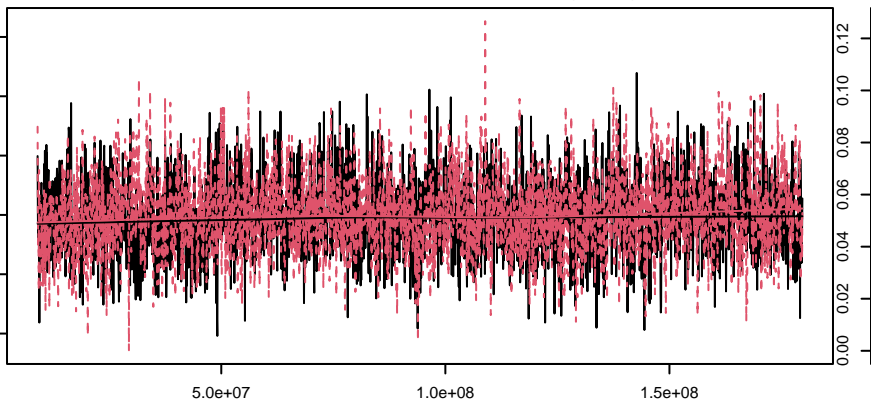
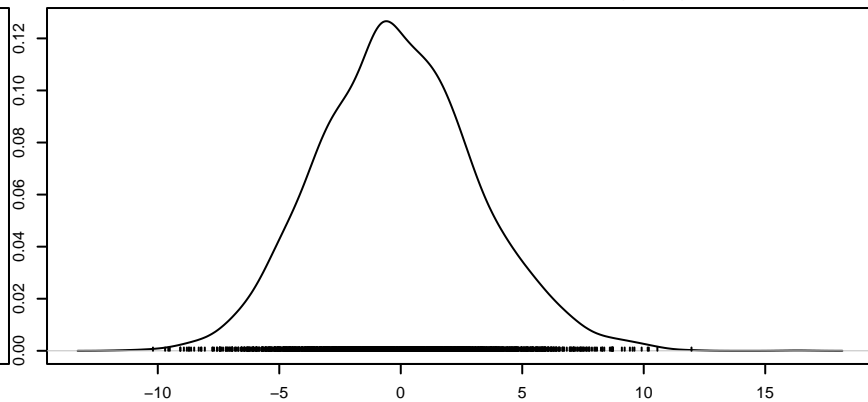
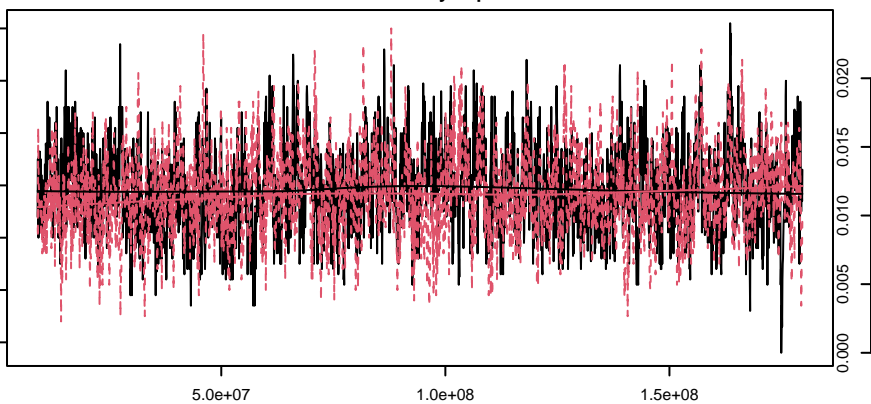
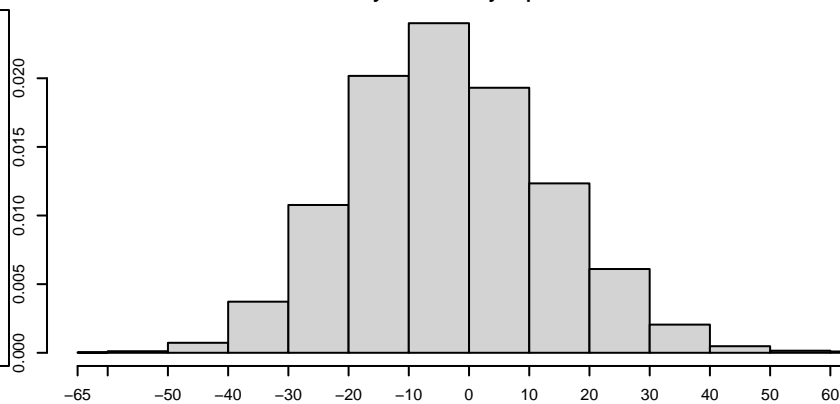
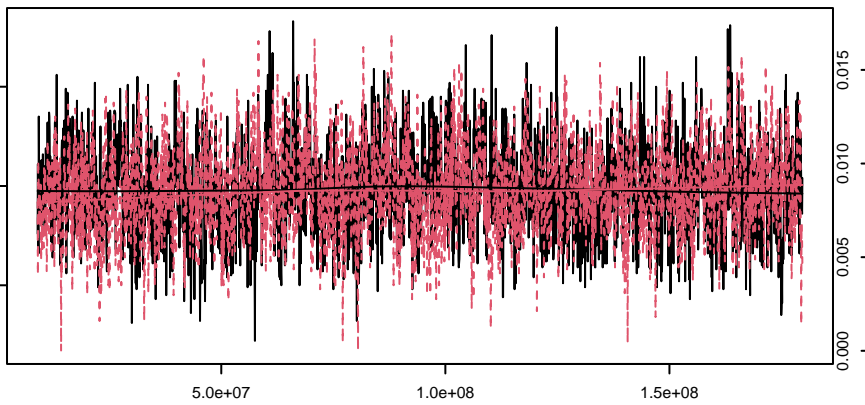
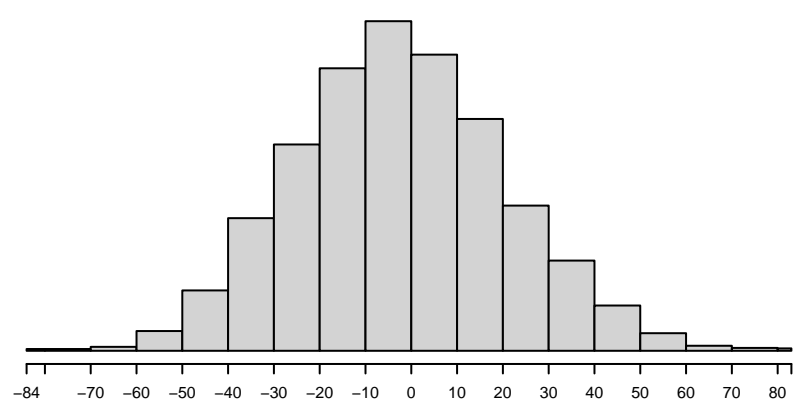


Trace of edges**Density of edges****Trace of F(nodefactor("inq_FV_or_inq_BdF")==0)~gwodeg.fixed.0.7****Density of F(nodefactor("inq_FV_or_inq_BdF")==0)~gwodeg.fixed.0.7****Trace of F(nodefactor("inq_FV_or_inq_BdF")==1)~gwodeg.fixed.0.7****Density of F(nodefactor("inq_FV_or_inq_BdF")==1)~gwodeg.fixed.0.7****Trace of mutual.by.deponent.1****Density of mutual.by.deponent.1**

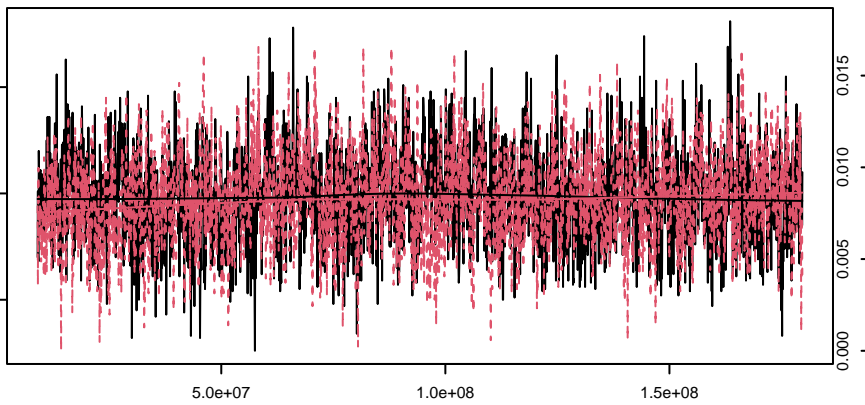
Trace of nodematch.cathar_aff:nodefactor.deponent.1



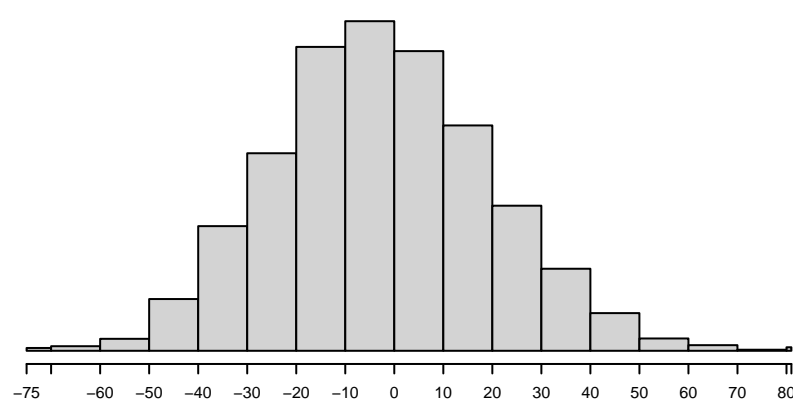
Density of nodematch.cathar_aff:nodefactor.deponent.1



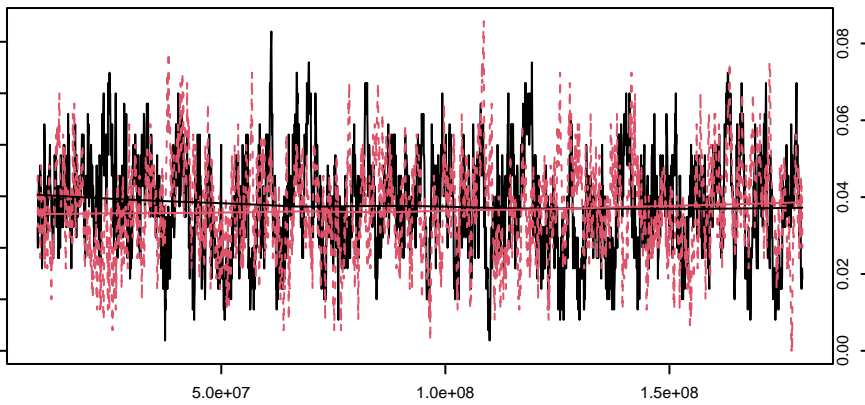
Trace of nodematch.apostle_aff:nodefactor.deponent.1



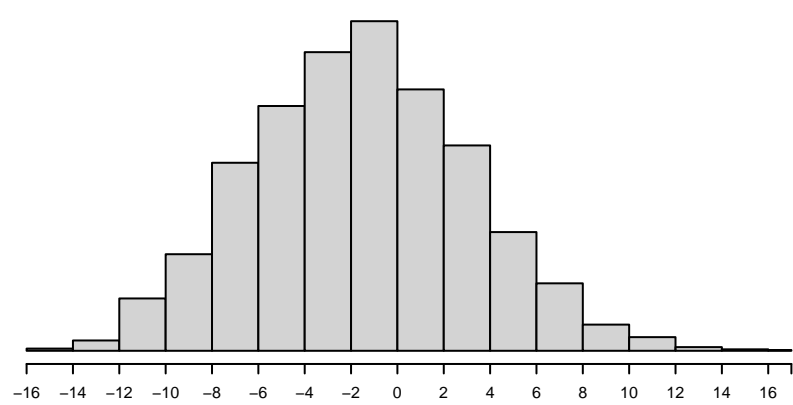
Density of nodematch.apostle_aff:nodefactor.deponent.1



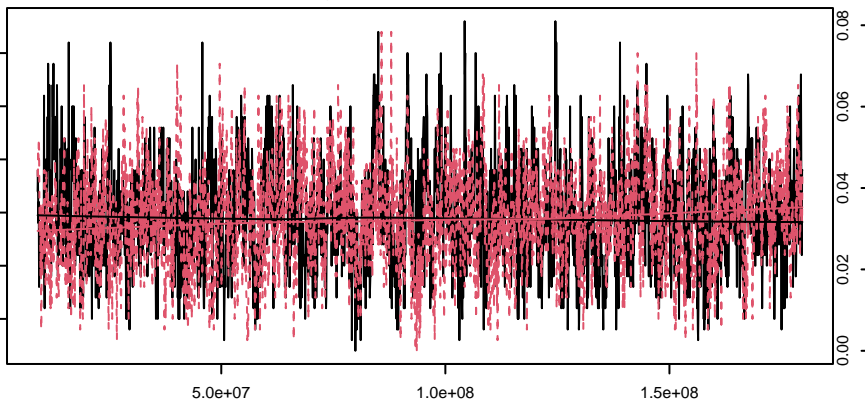
Trace of nodematch.kinship_id:nodefactor.deponent.1



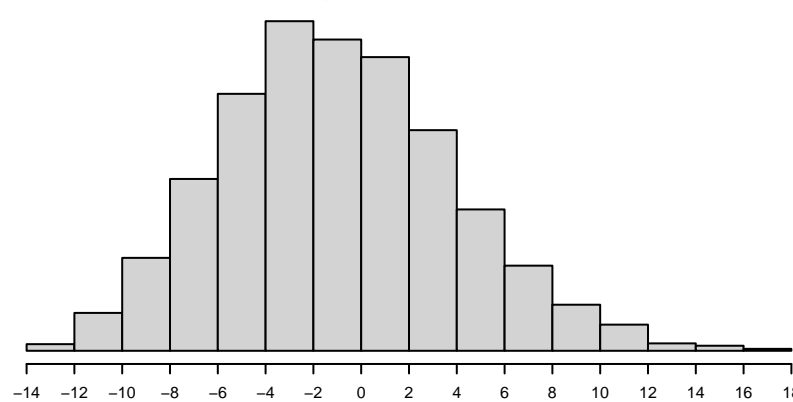
Density of nodematch.kinship_id:nodefactor.deponent.1



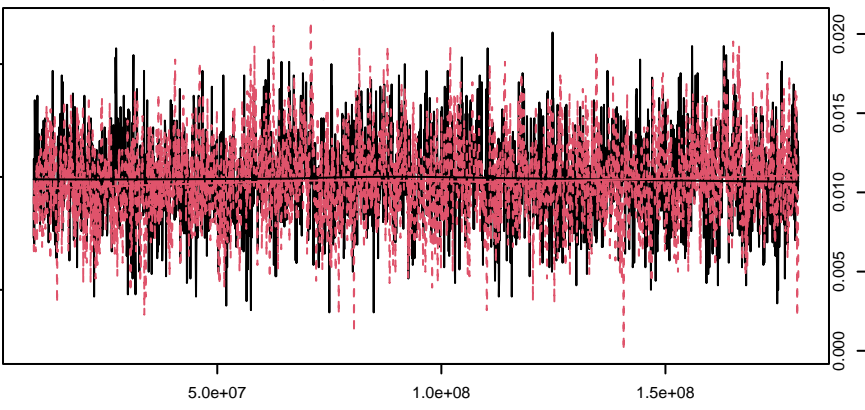
Trace of mix.gender.0.0:nodefactor.deponent.1



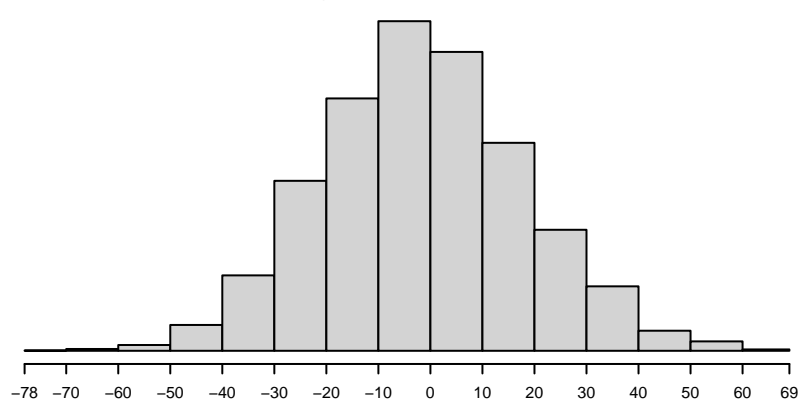
Density of mix.gender.0.0:nodefactor.deponent.1



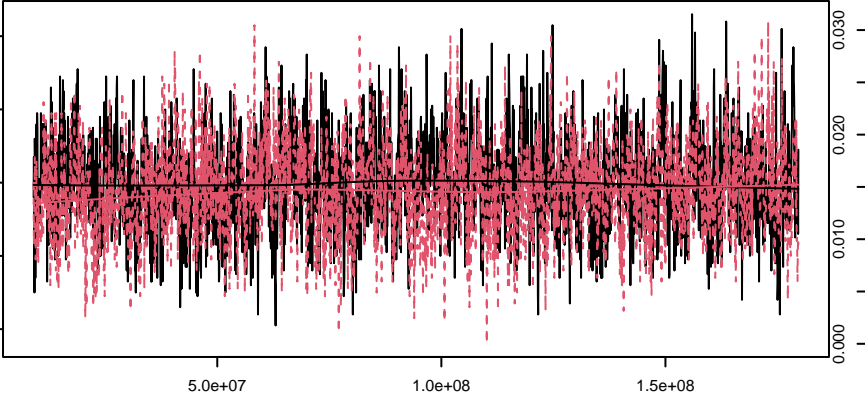
Trace of mix.gender.1.1:nodefactor.deponent.1



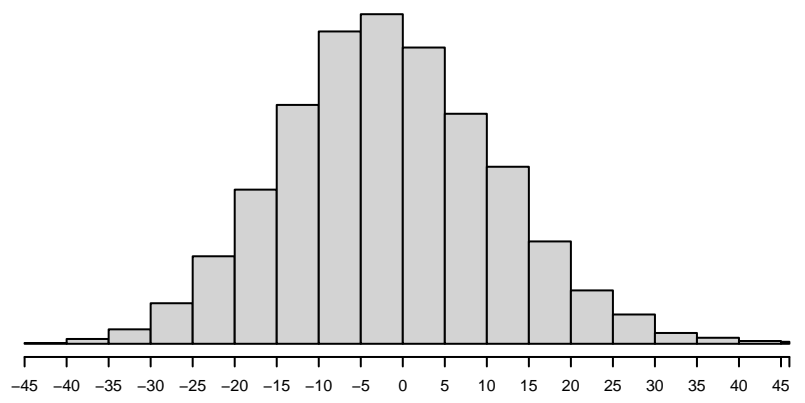
Density of mix.gender.1.1:nodefactor.deponent.1



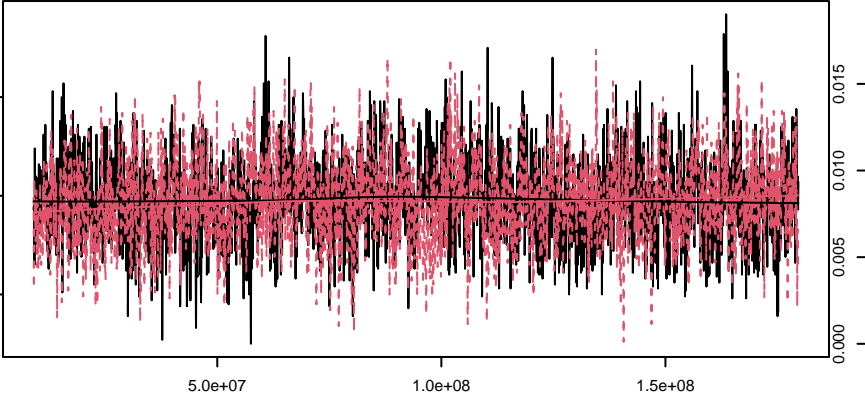
Trace of nodefactor.redeponent.1:nodefactor.deponent.1



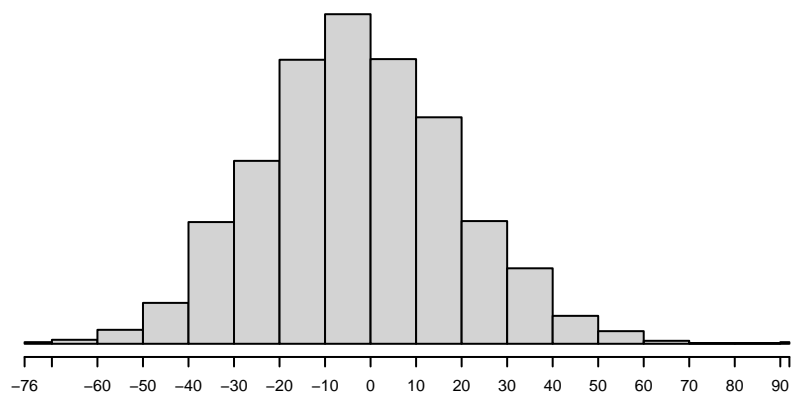
Density of nodefactor.redeponent.1:nodefactor.deponent.1



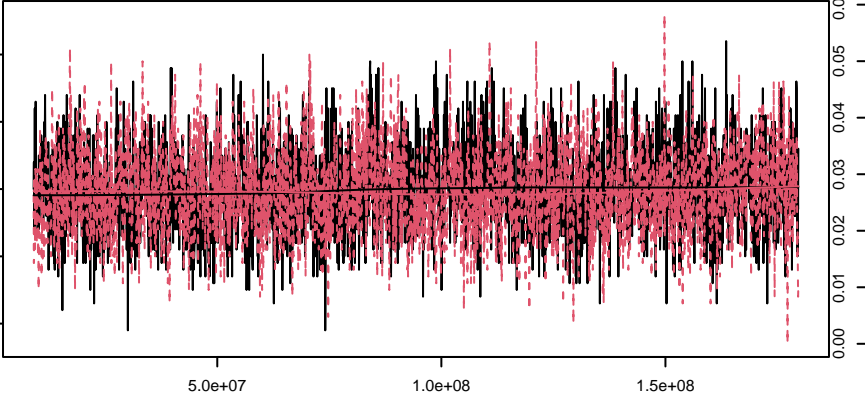
Trace of nodefactor.ever_summed.1:nodefactor.deponent.1



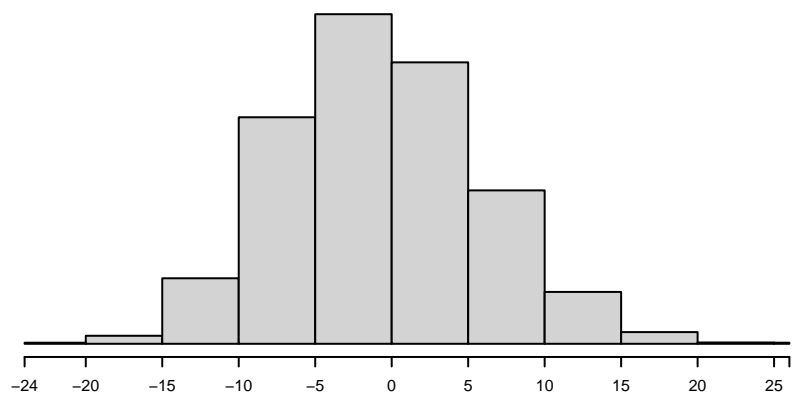
Density of nodefactor.ever_summed.1:nodefactor.deponent.1



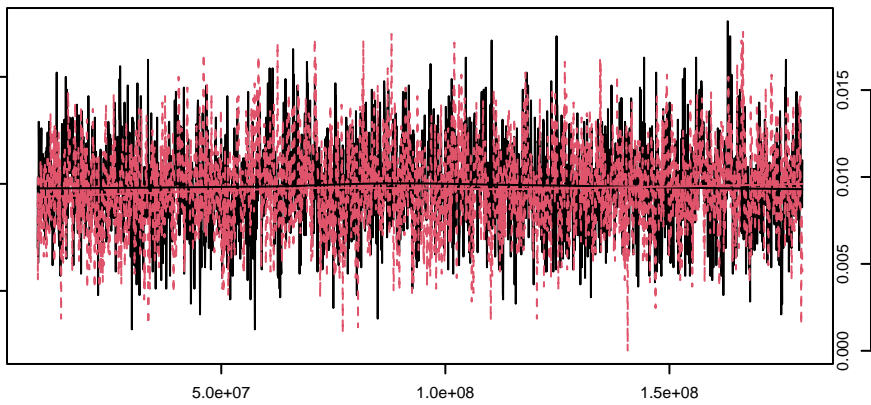
Trace of nodefactor.ever_pledged.1:nodefactor.deponent.1



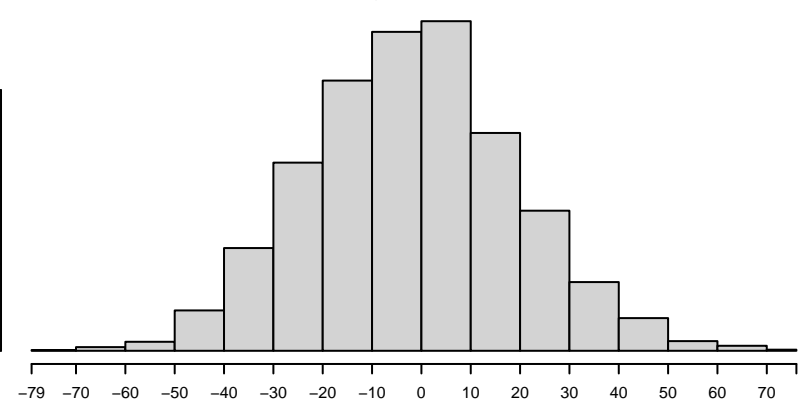
Density of nodefactor.ever_pledged.1:nodefactor.deponent.1



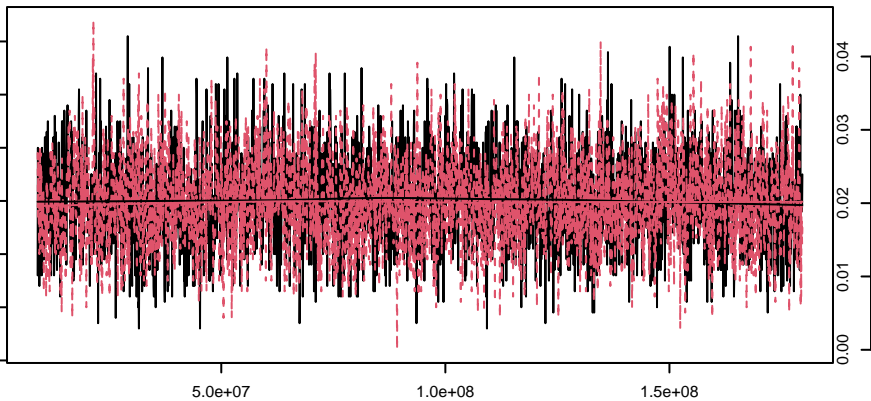
Trace of nodefactor.gender.1:nodefactor.deponent.1



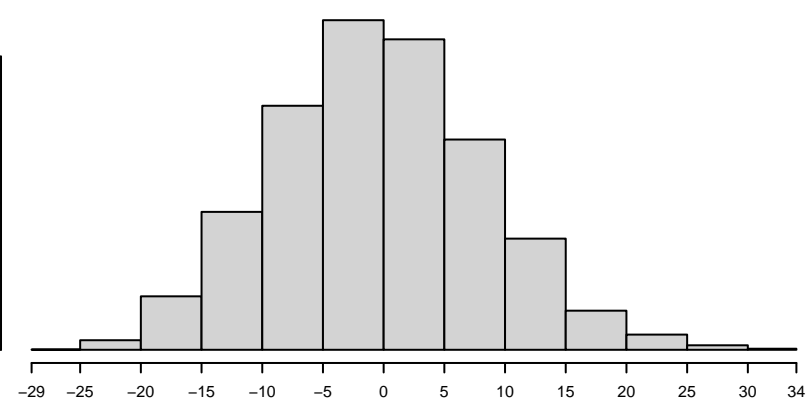
Density of nodefactor.gender.1:nodefactor.deponent.1



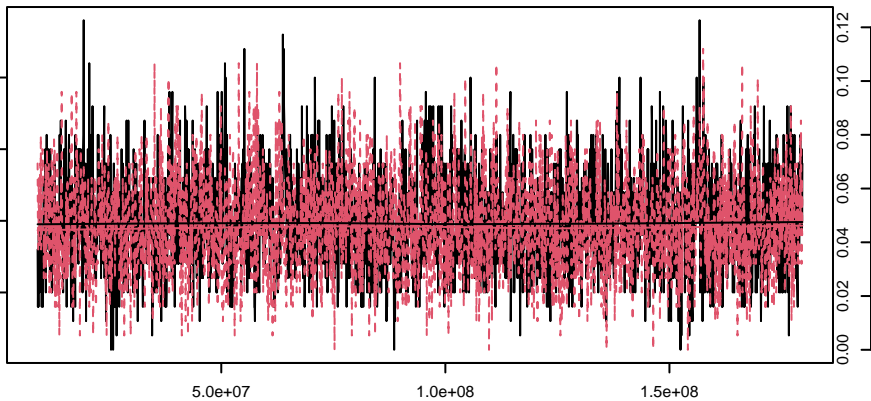
Trace of nodefactor.churchperson.1:nodefactor.deponent.1



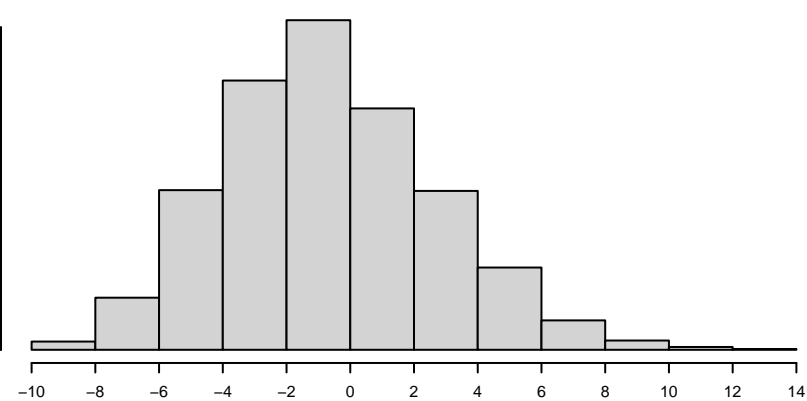
Density of nodefactor.churchperson.1:nodefactor.deponent.1



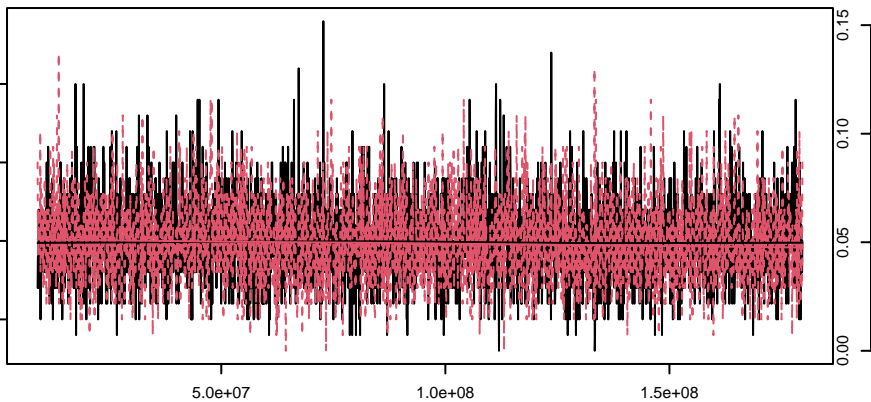
Trace of F(nodefactor("cathar_aff")==1)~nodefactor.middle_class.1:nodefactor.deponent.1



Density of F(nodefactor("cathar_aff")==1)~nodefactor.middle_class.1:nodefactor.deponent.1



Trace of F(nodefactor("apostle_aff")==1)~nodefactor.middle_class.1:nodefactor.deponent.1



Density of F(nodefactor("apostle_aff")==1)~nodefactor.middle_class.1:nodefactor.deponent.1

