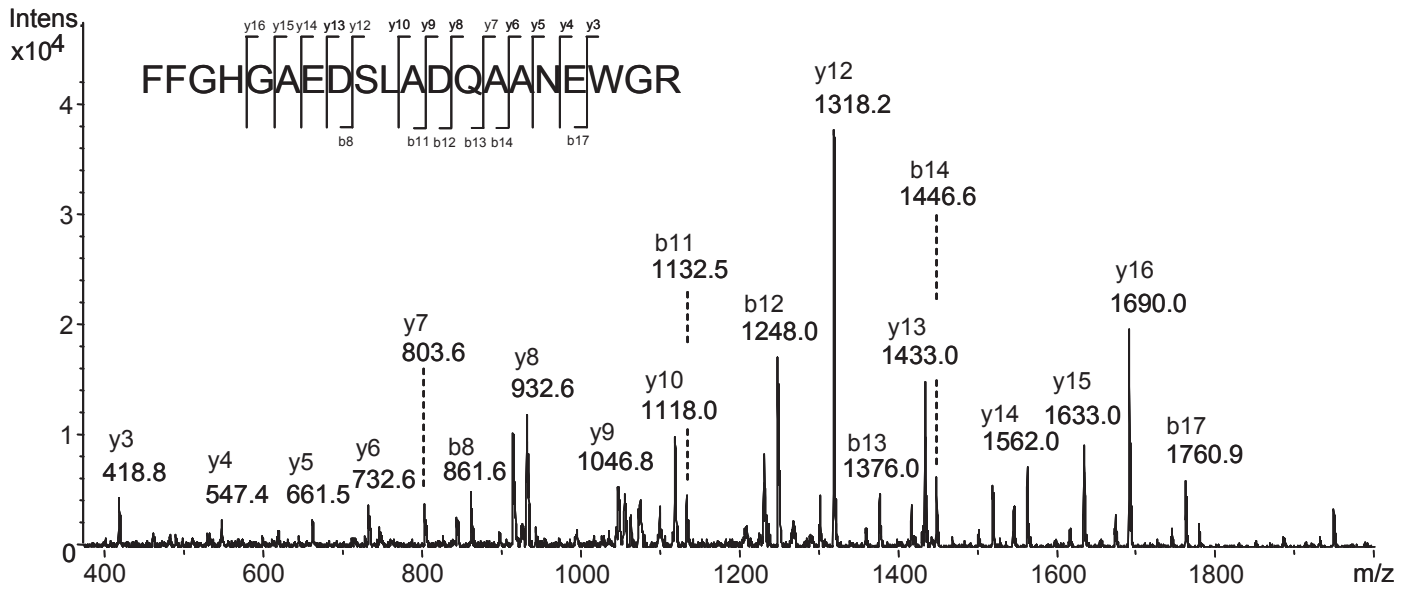
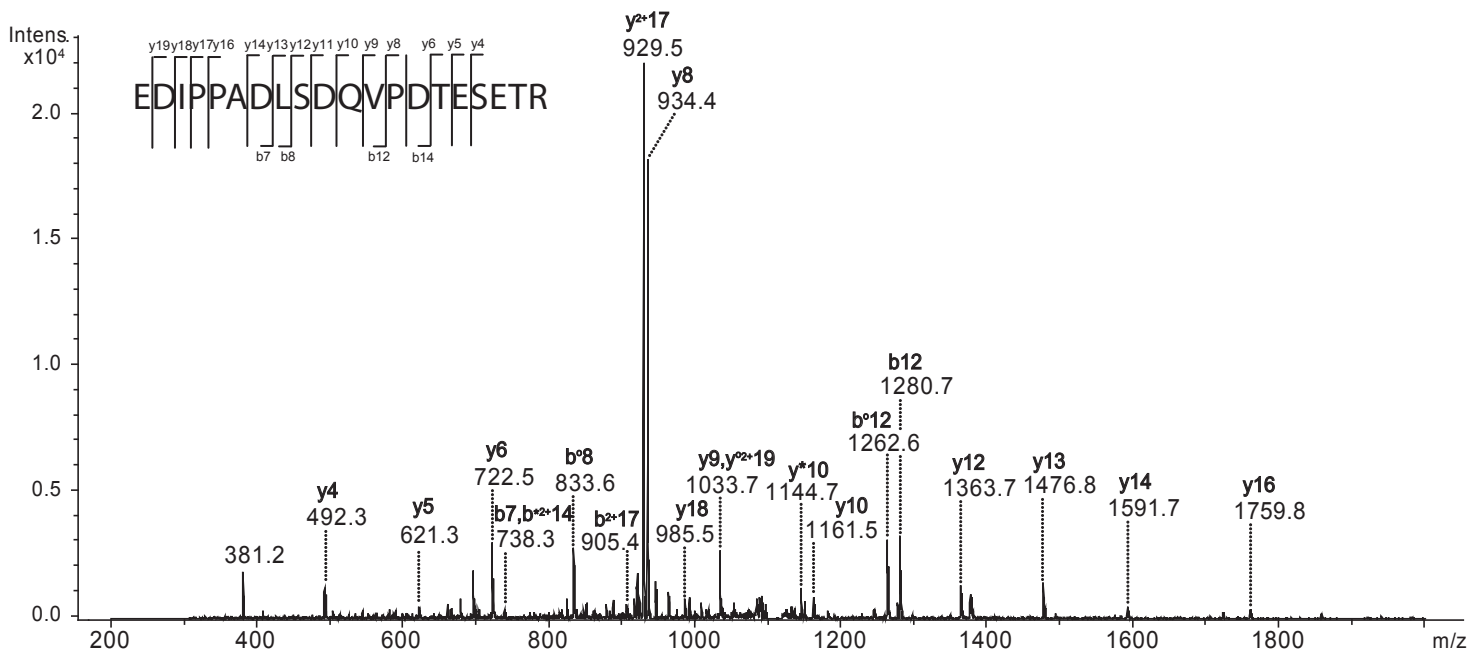


A

A-SAA peptide 86-105 (P02735)

Precursor ion mass observed 1089.8 Da $[M+2H]^{2+}$, M calculated: 2178.8 Da

B

Complement C3 peptide 960-979 (P01024)

Precursor ion mass observed 1108.6 Da $[M+2H]^{2+}$, M calculated: 2213.0 Da