

Figure S9.

A.

DENV-2 NGC AF038403.1
 DENV-2 PR1940 GQ398308.1
 DENV-2 PR5344 GQ398283.1
 DENV-2 05K3295 EU081177.1
 DENV-3 05K802 EU081184.1
 DENV-3 05K4454 EU081222.1
 KUNV AY274504.1
 YFV17D X03700.1

C.

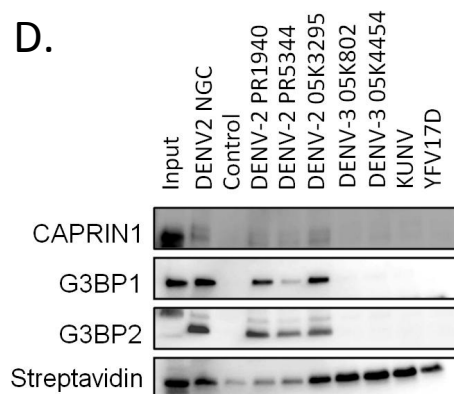


B.

| | base stem | side loop | Top stem | PK loop | | |
|-----------------------|---------------|-----------------|----------|----------------------|-------------|-------|
| D3/SG/05K802DK1/2005 | AGGCTAACTGT | CAGGCCACCTTAA | ----GC | CACAGTACG--GAAGAAGCT | 10329 | |
| D3/SG/05K4454DK1/2005 | AGGCTAACTGT | CAGGCCACCTTAA | ----GC | CACAGTACG--GAAGAAGCT | 10329 | |
| D2/PR1940 | AGGCTAAAAGT | CAGGTCGGATTAA | ----GC | CATAGTACG--GGAAAAACT | 10338 | |
| D2/PR5344 | AGGCTAAAAGT | CAGGTCGGATTAA | ----GC | CATAGTACG--GGAAAAACT | 10337 | |
| D2/NGC | AGGCTAGAAGT | CAGGTCGGATTAA | ----GCT | ATAGTACG--GAAAAAACT | 10338 | |
| D2/SG/05K3295DK1/2005 | AAGTCAGAAGT | CAGGTCGGATTAA | ----GC | ATAGTACG--GAAAAAACT | 10338 | |
| KUN | AGTGAGGAAGT | CAGGCCGAAAAATTC | CCGC | ACCGGAAGTTGAGTAGACG | 10539 | |
| YFV_17D | CGGGTGGAGAACC | CGGACTCCCCACA | --- | ACCTGAAACC | GGGATATAAAC | 10437 |

| | top stem | base stem | PK spacer | |
|-----------------------|----------------|-----------|------------------------------|--------------|
| D3/SG/05K802DK1/2005 | GTG-CTG---- | CCTGTGA | GCCCCGTCCA--AGGAC----- | GTTA 10361 |
| D3/SG/05K4454DK1/2005 | GTG-CTG---- | CCTGTGA | GCCCCGTCCA--AGGAC----- | GTTA 10361 |
| D2/PR1940 | ATG-CTA---- | CCTGTGA | GCCCCTGCCA--AGGAC----- | GTTA 10370 |
| D2/PR5344 | ATG-CTA---- | CCTGTGA | GCCCCTGCCA--AGGAC----- | GTTA 10369 |
| D2/NGC | ATG-CTA---- | CCTGTGA | GCCCCGTCCA--AGGAC----- | GTTA 10370 |
| D2/SG/05K3295DK1/2005 | GTG-CTA---- | CCTGTGA | GCCCCGTCCA--AGGAC----- | GTTA 10370 |
| KUN | GTG-CTG---- | CTGCAC | TCAACCCCAGGAGGACTGG----- | GTGAAC 10578 |
| YFV_17D | ACGGCTGGAGAACC | GGGCTCCGC | ACTTAAAATGAAACAGAAACCCGGGATA | 10487 |

D.



E.

