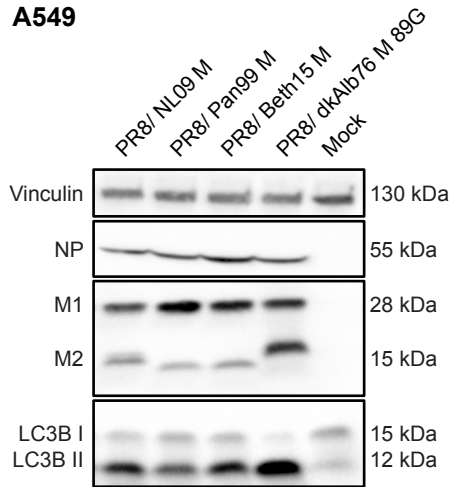


**A549****Supplementary Figure 5. High Expression Ratio of M1 to M2 protein in Human Cells is Dependent upon Viral M Segment Host Origin.**

A549 cells were inoculated at MOI=5 with PR8 viruses possessing M segments from human or avian host-derived strains and incubated at 37° C for 8 hours, then cells were lysed with whole cell lysis buffer. Human M segments were derived from the following viruses: A/NL/602/09N (H1N1) (NL09); A/Panama/2007/99 (H3N2) (Pan99); and A/Bethesda/15 (H3N2) (Beth15). Vinculin expression was measured to allow normalization of viral protein levels. NP expression was measured to assess viral replication. Levels of M1 and M2 protein expression were assessed using an antibody (Mab E10) to a common epitope at the amino terminus of M1 and M2 proteins, allowing relative expression to be assessed. Levels of LC3B I and II were assessed using an antibody that detects both the precursor and the activated forms of LC3B protein. Data presented are representative of Western blots from three independent experiments.