

Use and maintenance manual

Manual which shows the daily use and maintenance of Fitwall® step by step, as well as a list of precautions to take into account.

fitwall™

Usage recommendations

Fitwall® is used as an interior decorative covering for vertical walls and ceilings.

It can also be use don vertical facings of commercial or residential furnishings or units.

Cleaning instructions

Fitwall® is a material specially developed to be resistant and durable. Additionally, due to its formulation and production process it is an almost non-porous material, practically waterproof and contributing to good cleaning and maintenance conditions.

To achieve the desired, realistic aesthetic effects, 3 sophisticated pigmentation techniques are used:

- **Integrated colour:** This is a very careful process through which pigments are introduced on the surface of the material, integrating them in the matrix of the panel.
- **Enamel covering:** On panels with integrated colour, a surface enamel is applied to give greater colour adhesion and consistency.
- **Covering with dye:** On panels without pigmentation, seeking to maximise the realism of certain finishes, a very specific dye is applied.

Despite being a resistant and durable material compared with the majority of chemical substances and products to which it may be exposed, periodic cleaning and maintenance work must not be neglected. These tasks are necessary for avoiding prolonged exposure to stains, making them more difficult to eliminate.

Cleaning materials

Fitwall® is a material with very good surface resistance. Despite this, it is necessary to follow some recommendations and precautions to prolong the lifespan of the material and preserve its surface characteristics.

For cleaning, the use of scrubbers or any rough cleaning element which may damage the surface of the material must be avoided. Fitwall® is a material with very realistic textures and pigmented finishes. The use of these rough or abrasive cleaning materials may discolour or alter the superficial aesthetic finish.

In turn, linen cloths must be avoided, which may be eroded by the surface of the material. This erosion may cause the surface of the material to become dirty.

RECOMMENDED MATERIAL



Green cleaning cloth (absorbent)



Grey drying cloth (microfibre)



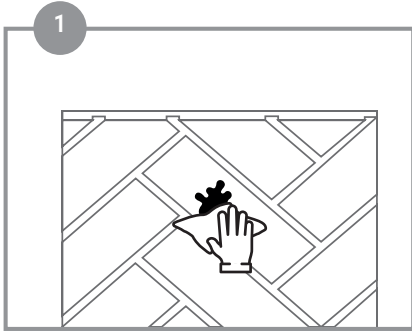
Water



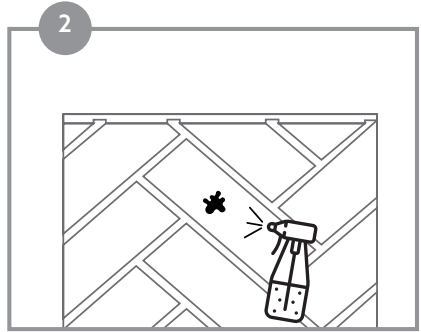
Cleaning soap or degreaser such as K-Cleaner



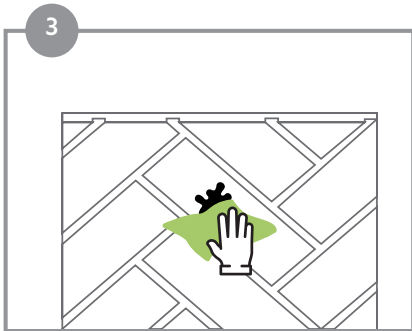
Brush with soft bristles



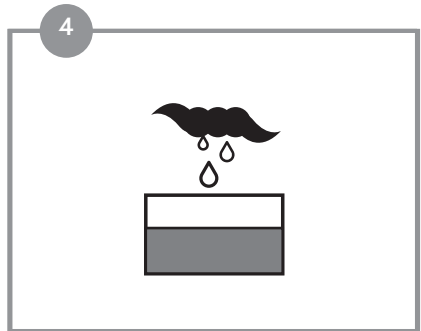
1 Eliminate the excess of the stain with a wet paper towel.



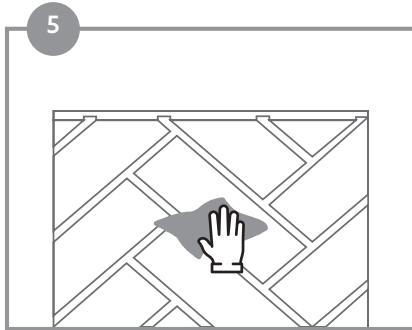
2 Apply soap to the stain.



3 Use the cloth to remove the stain applying pressure with your hands.



4 Eliminate the excess water.



Dry the surface with the drying cloth.

Stains which are difficult to access or not superficial:

Fitwall® is a material with countless possibilities for design, texture and finishes. Depending on the model, this may generate spaces which are difficult to access with a cleaning cloth. For these cases it is recommended to incorporate the use of cleaning brushes with soft bristles into the cleaning process. They must be brushes which do not generate surface abrasion, either due to hardness or composition.

For this process, it is recommended to wash the space where the stain or dirt is located with plenty of soapy water, using the brush to eliminate the stain. For the cleaning, the area must be rinsed with plenty of water to eliminate potential residue left within the space that was cleaned.

Resistance to stains and chemical products

It must be noted that the main application of Fitwall® is vertical, therefore the majority of stains and dirt are caused by indirect splashing. Regardless of the specific finish of each panel (integrated colour, covering with enamel or covering with dye), attention must be paid to the different agents or stains which may affect the surface finish of Fitwall®.

Depending on the persistence of the stain or the effect it causes to the surface, we can classify stains or chemical products into the following types:

Type 1 stains

These are common stains considered easy to eliminate. In general, they are from food and drinks, generally liquids or water based products accidentally spilled day to day. For example: wine, coffee, food, carbonated drinks, alcoholic drinks, oils, etc.

For this type of stain, quick elimination is recommended using soapy water with the green cleaning cloth.



Type 2 stains

These are stains which may be a little more difficult to eliminate. They consist of stains from everyday products which may leave permanent discolouring on the surface. For example: dyes, nail polish, curry, lipstick, etc.

To eliminate these stains, they must be rinsed with plenty of water, using the cleaning cloth. If the stain persists, concentrated degreasing soap may be used.



Type 3 stains

These are caused by products which may harm the surface of the material. These stains are caused by aggressive products such as: acid or basic agents, strong oxidants, organic solvents or aggressive cleaning products.

To eliminate these stains, they must be rinsed with plenty of water, using the cleaning cloth. If the stain persists, concentrated soap or a degreaser may be used.



It is necessary to highlight that any stain, despite being easy to eliminate, may become persistent if left for long enough. It is therefore recommended to eliminate them as soon as possible.

STAINS	DESCRIPTION	EXAMPLES	CLEANER	AGENT
Type 1	More common and easier to eliminate. Generally food or drinks, such as water based liquid products	Wine, coffee, oils, juices, carbonated drinks, sauces	Green cloth or brush with soft bristles	Soapy water
Type 2	Stains which may discolour the material	Dyes, nail polish, cigarette marks, lipstick, markers, ketchup, et.	Green cloth or brush with soft bristles	Soapy water or concentrated degreasing soap
Type 3	Stains caused by strong chemical agents, whether acid or basic. Also strong oxidant products or organic solvents. They may damage the material superficially	Ammonia, bleach, citric acid, acetic acid, sodium hydroxide, hydrochloric acid, etc.	Green cloth or brush with soft bristles	Soapy water or concentrated degreasing soap



Notes and precautions

Fitwall® is a material designed to resist the majority of commonly used chemical products in the environments where it may be found. Despite this:

- It is recommended not to expose it to acidic or alkaline chemical products, or highly oxidising compounds, such as bleach, ammonia, caustic soda, etc.
- Do not leave it exposed to any type of stain or dirt for long periods of time, to facilitate their removal.
- Do not use aggressive commercial cleaning products on the Fitwall® surface, such as salfuman.
- Do not use rough cloths or scrubbers which may damage the surface.
- Do not use brushes with hard or metallic bristles which may cause erosion.
- Fitwall® panels with enamel covering and dye covering finishes offer the possibility of being painted again if there is any type of imperfection or damage due to wear or staining which cannot be correctly eliminated or which has affected the aesthetic finish.

Maintenance

Despite Fitwall® being a product which requires very little maintenance, periodic maintenance is recommended to prevent the accumulation of dirt. The recommended maintenance consists of periodic cleaning with a wet cloth. Additionally, soapy water may be used with the cleaning cloth for more effective cleaning.

In general, Fitwall® is used in vertical applications, therefore there are less stains and dirt day to day, even further reducing its maintenance. The majority of the stains or splashes which may be received are indirectly on the material, reducing its exposure in comparison with horizontal applications.

It must be noted that in places of greater transit or areas requiring maintenance, cleaning may be carried out with dusters, dusting wipes and vacuum cleaners, etc. Due to speed and ease, large areas may be cleaned in a shorter time.

It is necessary to immediately eliminate any kind of stain when it occurs. Prolonged exposure times may increase the persistence of a stain.

Legal notice: The images, texts and data are the property of KRION SOLID SURFACE, S.A.U., with registered offices at Carretera Vila-real - Puebla de Arenosa (CV-20), 12.540 Vila-real (Castellón). The express written consent of KRION SOLID SURFACE, S.A.U., shall be required for the partial or total use or disclosure of the said material. KRION SOLID SURFACE, S.A.U., holds sole rights over all forms of use of the said material and, in particular, the right to its reproduction, distribution, public communication and transformation. All the said material is protected by intellectual property laws and any undue use may result in penalties, even of a criminal kind.

