

7700 COMFOR TEK SUMMIT SERIES KEY FEATURES

See why others don't measure up.



SUPERIOR CHASSIS

Mandrel Bends
18 ga. Steel
1" Steel – Legs
3/4" Steel – Back



METAL ON METAL

StaFast "T-nuts" are used to attach the seat / back to the frame, providing superior holding power.



PLYWOOD SEAT & BACK

Superior plywood is used on all chairs. The seat features a 5/8" thick and the back is 1/2" for extra support.



3" DUAL-DENSITY FOAM

The two different density foams are combined to create a comfortable seat.



Top View

COMFORT BACK

Radius 'Comfort' back with lumbar support for Long term comfort.



WATERFALL CUSHION

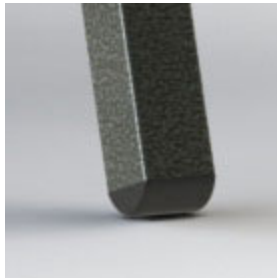
We take comfort very seriously. Our waterfall cushion provides comfort to guest for long periods.



FABRIC CARD POCKET

Sewn on card pocket
Ideal for donation envelopes

Dimenisons: 5 1/2"W x 6" H



NYLON GLIDES

Non-Marring glides designed for delicate floors such as tile.



STACKING

All 7700 Series chairs have the ability to stack up to 6-8 high.



SEAMLESS SEATING

All 7700 Series chairs have the ability to Interlock to create a pew-like effect.



DIMENSIONS

Width: 20"
Depth: 24"
Height: 34 1/2"
Weight: 20 lbs
C.O.M.: 1.1 yards



UNMATCHED WARRANTY

Lifetime warranty on the frame
15 years on CCF foam
10 years on Dual Density foam
10 years on fabric

7700 COMFOR TEK SUMMIT SERIES KEY FEATURES (CONT.)

See why others don't measure up.



CHAIR TESTING

CAL 117 – Passes
ANSI / BIFMA Approved
CAL 133 (Optional)



FABRIC SELECTION

ComforTek stocks some of
today's top colors, patterns,
and finishes. Visit
www.ctsfabrics.com
to view all fabrics.