

ELS1

Early Learning Centre



Assembly Guide ELS1_2012_A

Check out our other products online at
www.copernicused.com

For assistance, please contact us:

1-800-267-8494

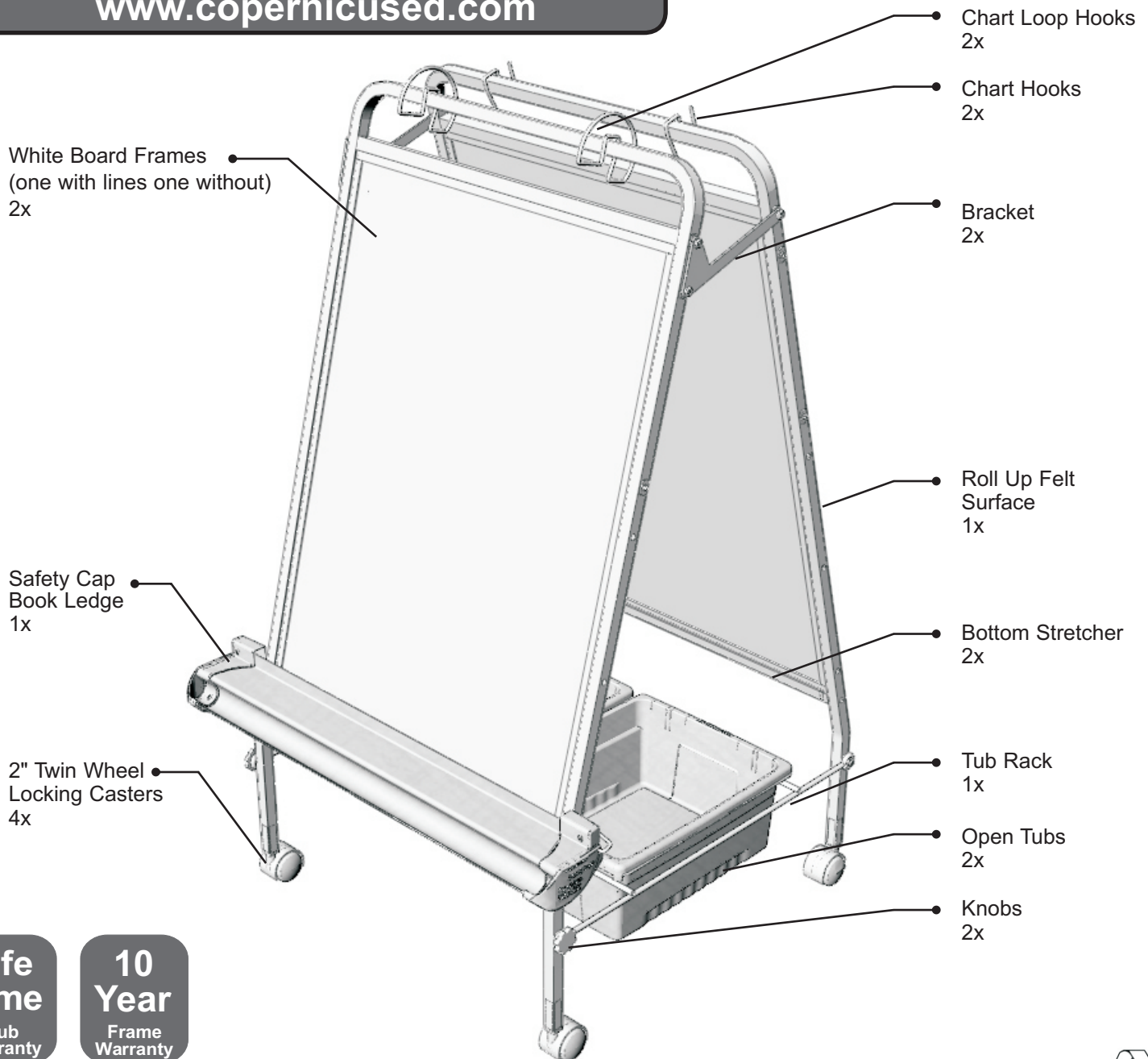
Email info@copernicused.com

Have your packing slip ready for reference

WARNING

- This product is meant to be assembled by an adult.
- In its unassembled state, small parts present a hazard.
- To be used under direct supervision of an adult.

Don't forget to check out our tips for your whiteboard at:
www.copernicused.com



Life Time
Tub
Warranty

10 Year
Frame
Warranty



Early Learning Centre - Parts

Before beginning, you should have:

Additional tools required:



Adjustable wrench



Rubber Mallet

Contents - Box 1



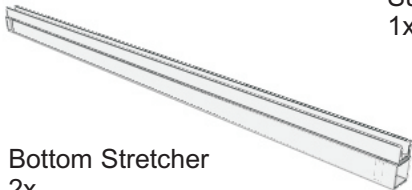
White Board Frames
(one with lines
one without)
2x



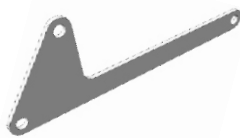
Tub Rack
1x



Roll Up Felt
Surface
1x



Bottom Stretcher
2x



Bracket
2x



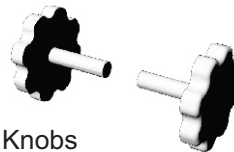
2" Twin Wheel
Locking Casters
4x



Chart Loop
Hooks
2x



Chart Hooks
2x



Knobs
2x

Hardware
Actual Size

In Box 1

20mm
Bolt
8x



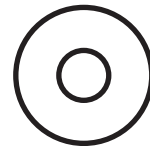
35mm
Bolt
4x



Lock
Washer
10x



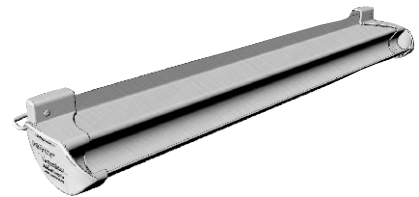
Nylon
Washer
4x



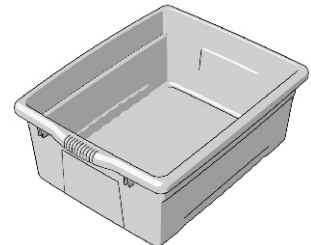
Assembly
Wrench
1x (Not to scale)



Contents - Box 2



Safety Cap Book Ledge
1x



Open Tubs
2x



NOTE: Do not tighten any fasteners until the unit is fully assembled

1 Install Bottom Stretcher

- Orient each stretcher with channel up
- Fasten to each Whiteboard Frame with two Large bolts & lock washers
- Repeat for other Whiteboard Frame

2 Install Casters

- Place Whiteboard Frame upside down
- Push caster stem into the caster insert
- Tap in with a mallet if necessary
- Repeat for other Whiteboard Frame

3 Attach Brackets

- Place Whiteboard Frames on their sides facing away from each other
- Select one to be the front
- Align Bracket with the triangle end over the two holes on the front Whiteboard Frame
- Fasten the Bracket to the front Whiteboard Frame with two 20mm bolts & lock washers
- Align the hole on the back of the Bracket with the top hole on the rear Whiteboard Frame
- Fasten to the rear Whiteboard Frame with 20mm bolt & lock washer
- Repeat for other side of Whiteboard Frames, ensuring that the Bracket points in the same direction

NOTE: Ensure that the triangle end of the Bracket is used on the same side that the Knobs are used to fasten the Tub Rack to the Frame

4 Install Tub Rack

- Align the loops of the Tub Rack with the bottom holes in the rear Whiteboard Frame
- Fasten to the rear Whiteboard Frame using two small bolts & four nylon washers
- Align the other loops of the Tub Rack with the bottom holes in the front Whiteboard Frame
- Fasten with Knobs

Front Frame

Rear Frame

Nylon Washers

6 Snap the Hooks onto the Front & Rear Frames

- Place the empty hardware bag over frame to prevent scratching

Snap

5 Install Book Ledge

- Insert one hook into one of the three hole positions in one side of the Whiteboard Frame
 - Pull out the opposite hook & snap into place
- (Note: the spring tension is designed to discourage children from unhooking the Book Ledge)**

7 Book Tubs on the Tub Rack

- Insert from the sides

8 Place Felt Surface on desired Whiteboard

Don't forget to check out our tips for your whiteboard at:
www.copernicused.com

