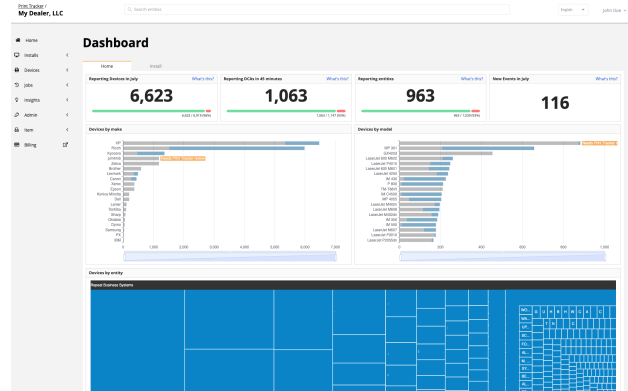


## What is Print Tracker?

Print Tracker is a data collection agent for large and small printer fleets. Collect meters, receive alerts when supplies are running low or maintenance is needed, and access your devices remotely to troubleshoot customer issues.



## Why Print Tracker?

- ✓ **One-click deployments**  
It takes less than a minute to install
- ✓ **Cross-platform**  
Windows, macOS, Linux
- ✓ **Remote Technician™**  
Remotely configure and update devices
- ✓ **Supply and alert management**  
Get notified when your customers need help
- ✓ **Role-based access control**  
Give your customers access to their data
- ✓ **Custom reports**  
Design and schedule automated reports
- ✓ **All your data**  
Choose from hundreds of meters and supply types
- ✓ **Hierarchy**  
Organize your fleet hierarchically and roll-up statistics
- ✓ **Integrate with e-automate**  
Automatically synchronize data to your ERP
- ✓ **Supplies auto-fulfillment**  
Ship replacements when supplies are low
- ✓ **REST API**  
Develop your own integrations using the API

## What's next?

### ✨ Features

Check out all the other amazing features we have to offer.

Contact your authorized reseller for more details.

### 📖 Documentation

Learn how to take full advantage of Print Tracker for managing your fleet.

[docs.printtrackerpro.com](https://docs.printtrackerpro.com)

### ▶ Get started

Contact your authorized resellers to start your free trial today.

[printtrackerpro.com/signup](https://printtrackerpro.com/signup)  
(866) 629-3342