

# WELCOME TO REFONTE

---

AI Engineering



## About

---

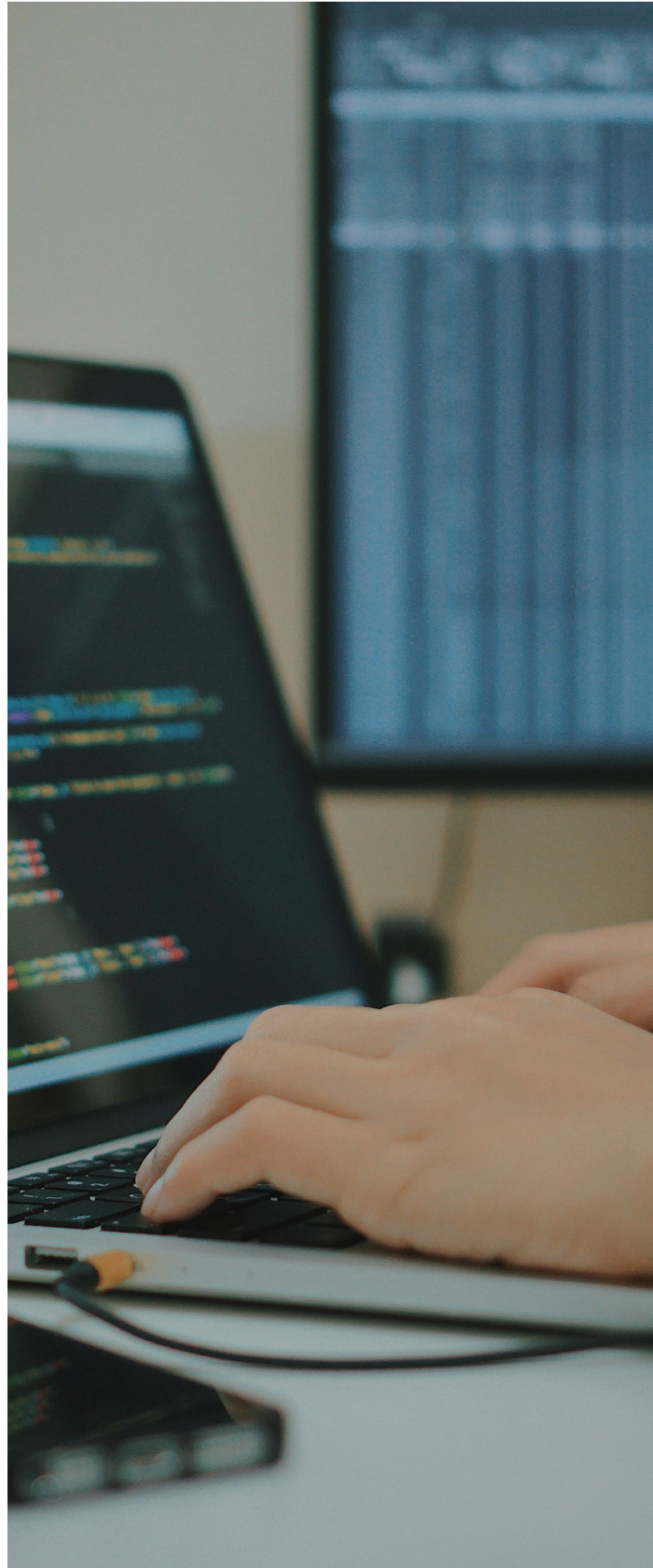
Welcome to Refonte's AI Engineering Training and Internship Program. This program is meticulously designed to equip learners with the essential skills required to excel as an AI Engineer.

Our comprehensive curriculum covers machine learning, deep learning, AI infrastructure, and ethical AI practices. Participants will learn how to build and deploy AI models, manage AI workflows, and address the challenges of AI implementation in real-world applications.

Our AI Engineering course is crafted for individuals from diverse backgrounds looking to master artificial intelligence, whether you're an experienced IT professional looking to upskill or a beginner eager to enter the field. The curriculum provides in-depth training on AI tools, frameworks, and techniques from foundational principles to advanced AI model implementation, optimization, and deployment.

## REFONTE INTERNATIONAL TRAINING AND INTERNSHIP PROGRAM (RITIP) IN AI ENGINEERING

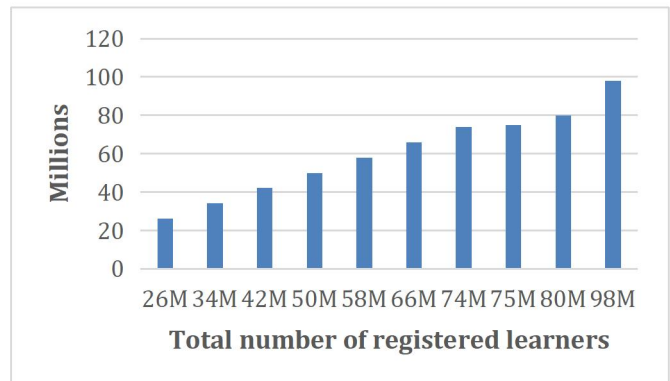
Advance your AI skills and accelerate your career with our customized Professional Certificate in AI Engineering. Designed for recent graduates and professionals looking to specialize in AI, this program provides in-depth learning through practical labs and real-world projects. You'll master the development, deployment, and optimization of AI models. Offered online by RITIP, the program includes personalized mentorship, live sessions, and focused lab modules for a comprehensive learning experience.





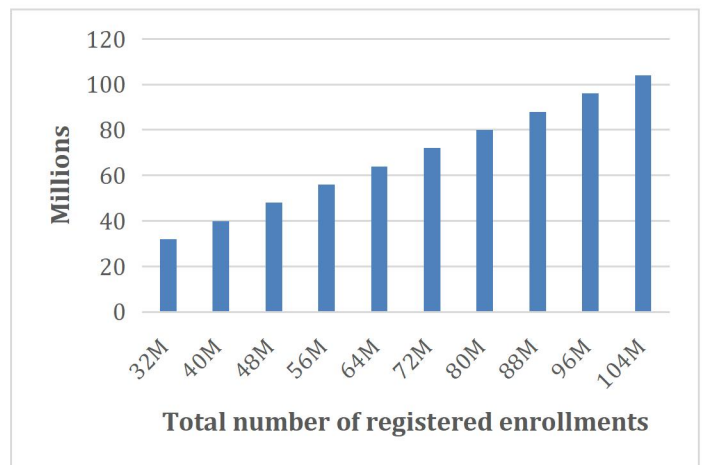
**Details of the course:**

- Experience hands-on learning in Practical AI Engineering.
- Engage in live classes held weekly.
- Access additional modules for a comprehensive learning experience.
- Gain practical experience through real-life case studies.



**Registration**

Registration is now open for our latest AI Engineering cohort. Don't miss this opportunity to advance your skills and accelerate your career! To learn more and enroll, visit our website at [www.refontelearning.com](http://www.refontelearning.com). We look forward to having you in our program!





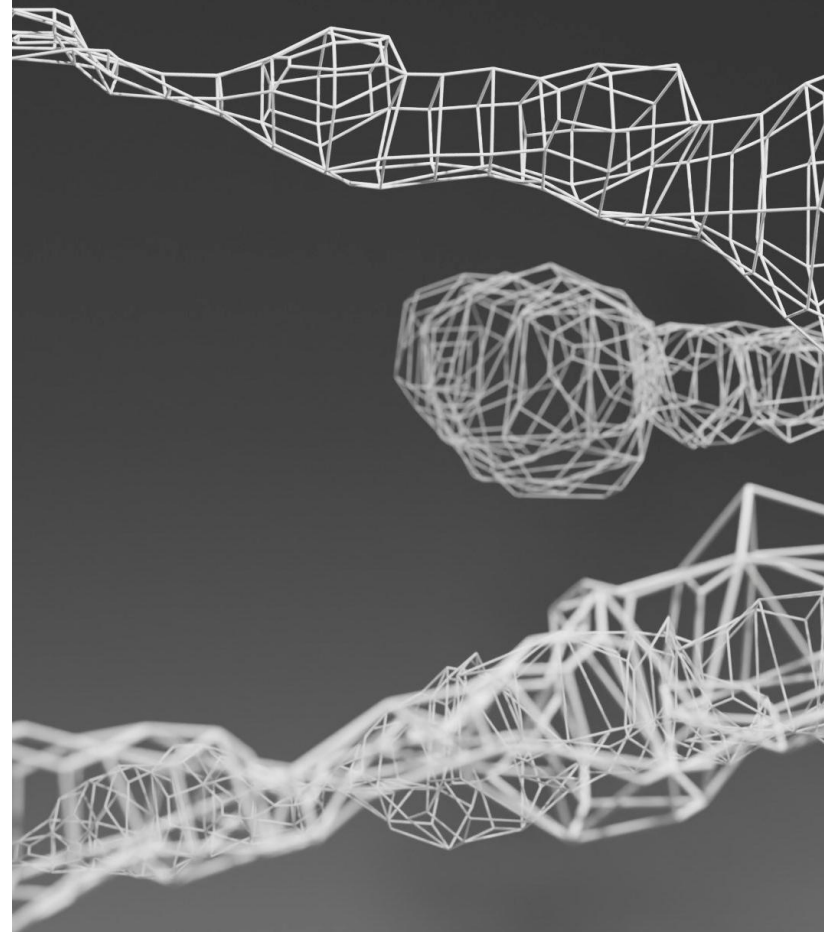
## Toolkit Components:

### AI Platforms and Tools

- TensorFlow
- PyTorch
- Jupyter Notebooks
- Google Colab
- Scikit-learn
- MLFlow
- AWS SageMaker

### Security, Ethics, and Bias Mitigation in AI

- Data Privacy and Security
- Fairness, Transparency, and Accountability in AI
- Ethical AI Practices
- Bias Detection and Mitigation



## Model Deployment and Monitoring

- CI/CD for AI models
- Model Versioning and Management
- Monitoring AI Systems
- AI Performance Optimization



**Training Learning Path:****1 - Introduction to AI and Machine Learning**

- Overview of AI concepts, machine learning principles, supervised vs unsupervised learning, and neural networks. Introduction to major AI frameworks: TensorFlow, PyTorch.

**2 - Deep Learning and Neural Networks**

- In-depth exploration of deep learning, convolutional neural networks (CNNs), recurrent neural networks (RNNs), and natural language processing (NLP).

**3 - AI Ethics and Security**

- Focus on ethical AI development, securing AI models, ensuring privacy and fairness, and addressing biases in AI systems.

**4 - AI Model Deployment and Optimization**

- Deploying AI models using AWS SageMaker, Google Cloud AI, and other tools. CI/CD for machine learning models and optimizing model performance.

**5 - Advanced AI Techniques**

- Explore reinforcement learning, generative adversarial networks (GANs), and cutting-edge research topics in AI.



**Program Curriculum:**

- Eligibility:
  - Mandatory: Bachelor's Degree (in any field) with a minimum 50% aggregate score at Graduation.
- Duration: 3 Months
- Time Commitment: 12-14 Hours per Week

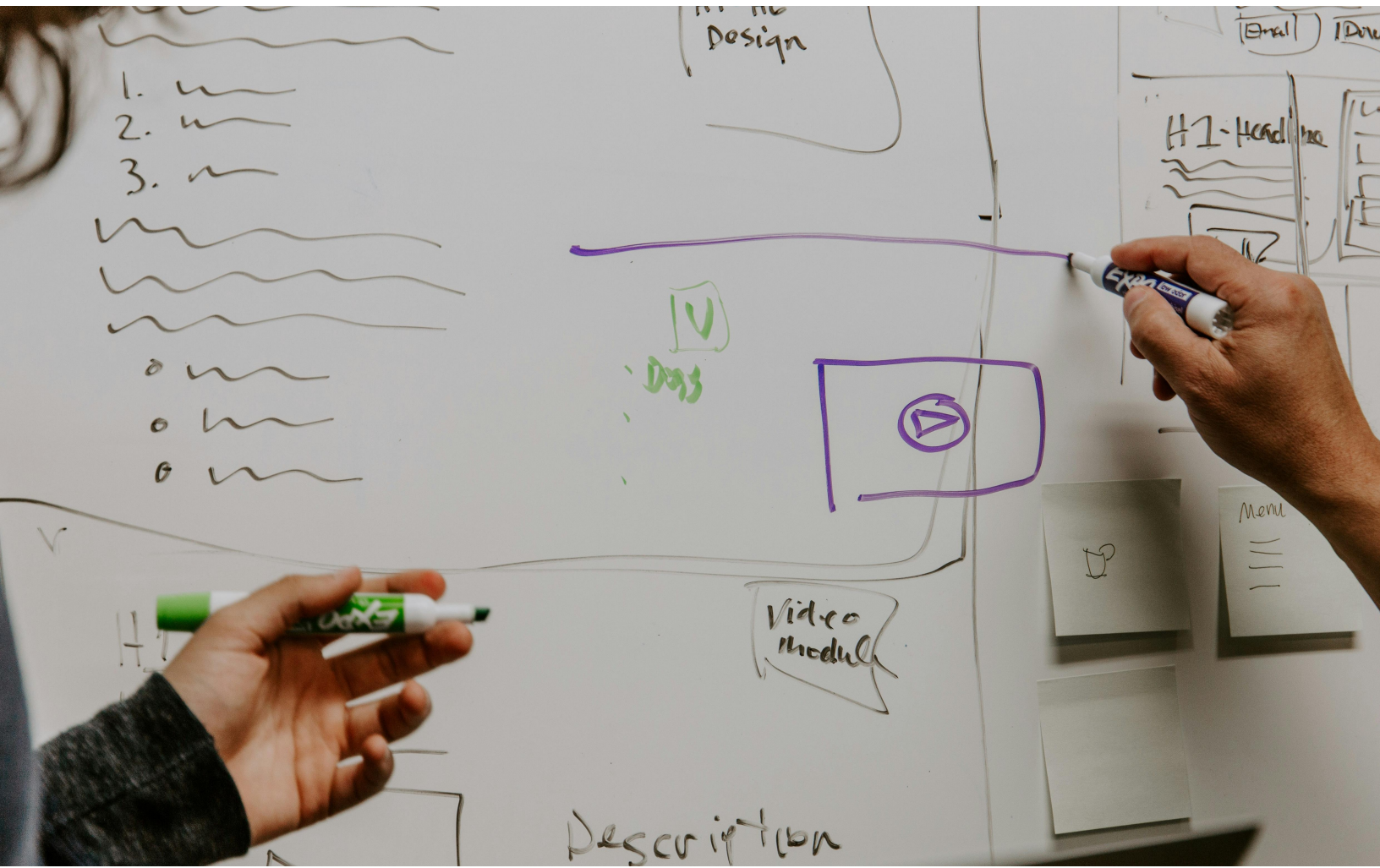




## AI Engineering Capstone Projects:

Real-world AI Engineering projects to solidify your skills:

- Building and deploying a deep learning model for image classification using CNNs
- Developing an NLP chatbot using RNNs and deploying it on cloud infrastructure.
- Implementing an AI-based recommendation system using collaborative filtering algorithms.



## Internship Duties and Responsibilities

During the internship, participants will apply AI engineering skills in real-world projects.

Responsibilities include:

- Designing and deploying AI models.
- Implementing AI model monitoring and security solutions.
- Optimizing AI workflows for scalability and performance.
- Prioritizing ethical behavior and promoting the development of soft skills across the organization.



## Domain of Internship Projects

- AI in Finance and Fintech
- Speech and Voice Recognition
- AI Ethics and Fairness
- AI in Human-Computer Interaction
- Reinforcement Learning

Our program offers a wide range of projects designed to provide hands-on experience and develop the skills most valued by employers. By working on projects that simulate real-world scenarios, students gain practical experience and sharpen the abilities that are in high demand in today's job market.





Program Structure

Introduction Session

LinkedIn Profile Development and Personal Bonding Session

Core Training and Internship Projects

Resume Building Workshop

Closing Session

Distribution of Resumes to Companies



# CERTIFICATE OF COMPLETION FOR OUR TRAINING PROGRAM



## C E R T I F I C A T E OF APPRECIATION

This certificate is presented to:

*John Doe*

---

This certificate is given to John Doe for achieving his training in  
Data Analysis in UK under Refonte Learning

REPRESENTATIVES

DATE: 01-01-2024  
RLTPXXXXXX





## SAMPLE INTERNSHIP CERTIFICATE



### CERTIFICATE OF ACHIEVEMENT

This certificate is presented to:

*John Doe*

This certificate is given to John Doe for achieving his training in  
Data Analysis in UK under Refonte Learning



REPRESENTATIVES



DATE: 01-01-2024  
RLTPXXXXXX



**Frequently Asked Questions:****Q: How long is the program duration?**

A: The program spans a 3-month training and internship period.

**Q: Will participants receive a certificate upon completion?**

A: Yes, participants will be awarded a certificate for both the training and internship phases.

**Q: Is the internship paid?**

A: No, the internship is unpaid.

**Q: Will participants receive mentorship?**

A: Yes, participants will receive personalized 1:1 mentorship.

**Q: What industries will participants work with during the internship?**

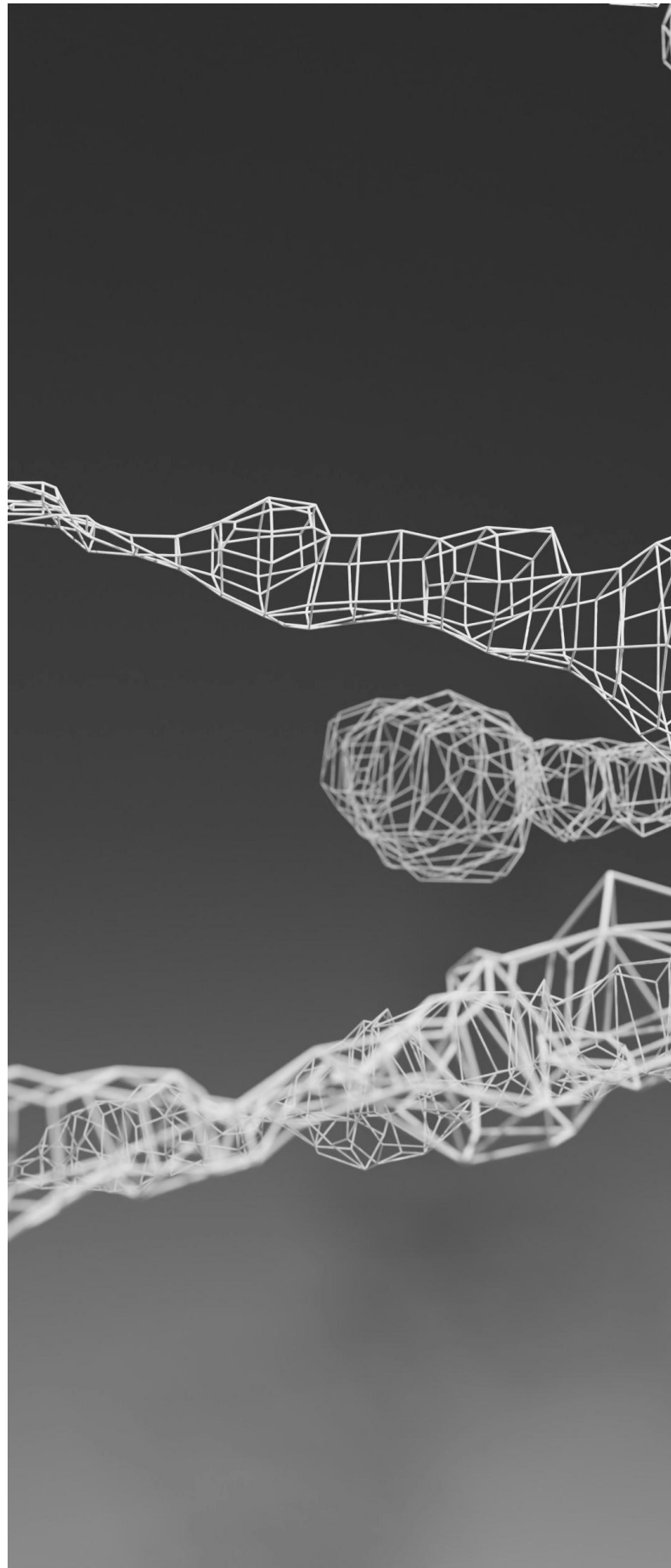
A: Participants will have the opportunity to collaborate with companies across various industries, depending on their skill set.

**Q: Is there a fee for the training program?**

A: Yes, a minimal fee is required for participation in the training program.

**Q: What is the program format?**

A: The program comprises a blend of training sessions and internship experience, supplemented by 1:1 mentorship.



## REFONTE LEARNING SUPPORT

### **Student Support Team:**

- Our dedicated Student Support team is available around the clock, 7 days a week.
- Feel free to reach out to us anytime at [official@refonteinfini.com](mailto:official@refonteinfini.com).

### **Industry Mentors:**

- Benefit from exceptional guidance provided by industry mentors, teaching assistants, and graders.
- Receive individualized feedback on your submissions and tailored guidance for improvement.

### **Doubt Resolution:**

- Utilize our Q&A Forum for prompt resolution of doubts by industry experts and peers.
- Rest assured, all responses are expert-verified to ensure the highest quality of learning.

### **Expert Feedback:**

- Receive personalized expert feedback on assignments and projects.
- Engage in regular live sessions conducted by experts to address any concept-related doubts you may have.





## CONTACT US

[official@refontelearning.com](mailto:official@refontelearning.com)

REGISTER NOW!



Refonte Learning