



AUGENCORE

REMOTE INPUT TERMINAL

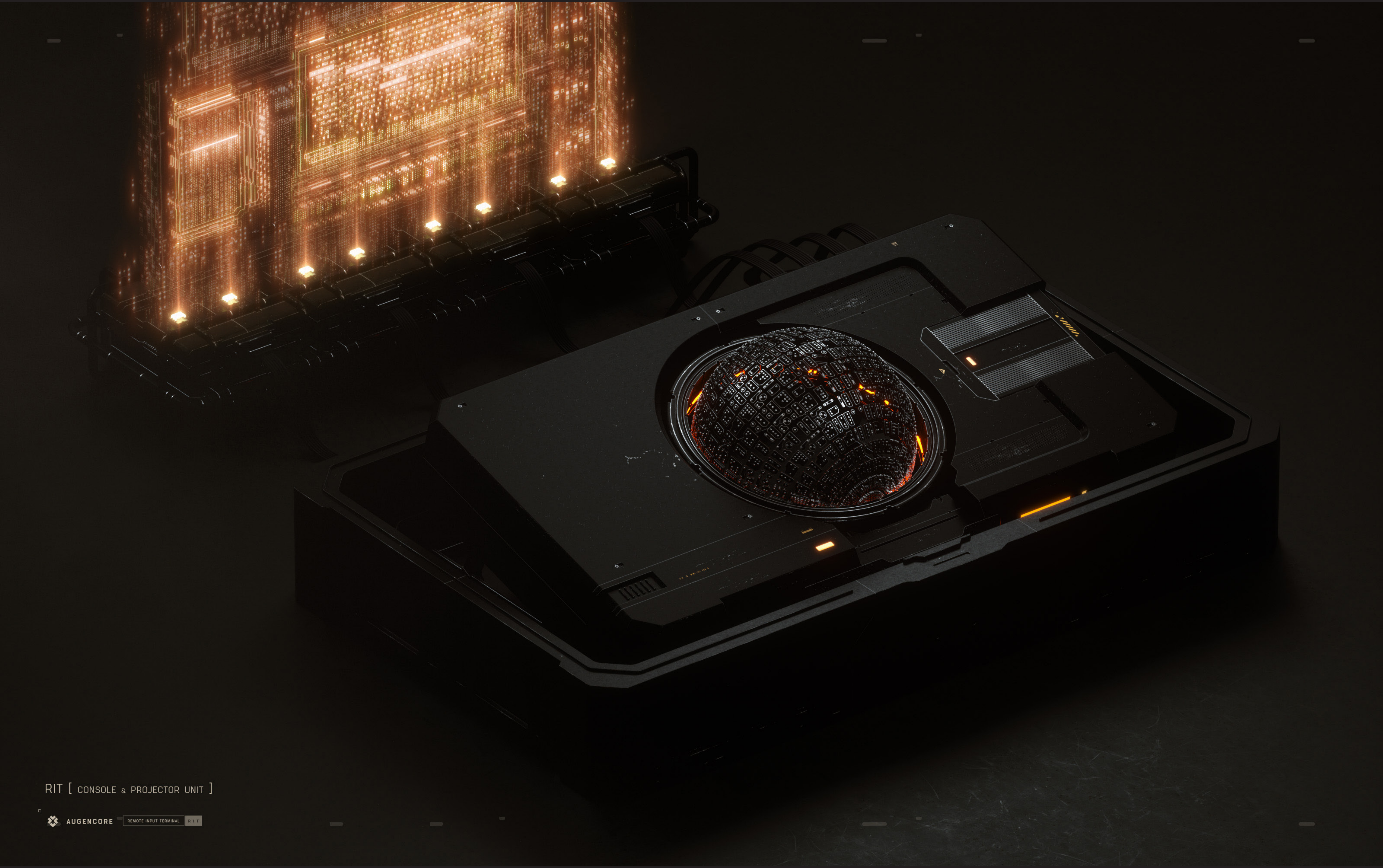
R I T

The Augencore Remote Input Terminal is a direct extension of their highly augmented and sophisticated technology. It's a mix of tactile instrumentation and complex machine language, contained in a single device, which is both modular and easily modified to suit the operator's needs.

-

The keyboard is suspended by a magnetic ring, allowing it free movement as well as any configuration that the user wants to display. The keys resemble braille, as the Augencore have merged so closely with machines that their visual language is mostly binary.





RIT [ CONSOLE & PROJECTOR UNIT ]





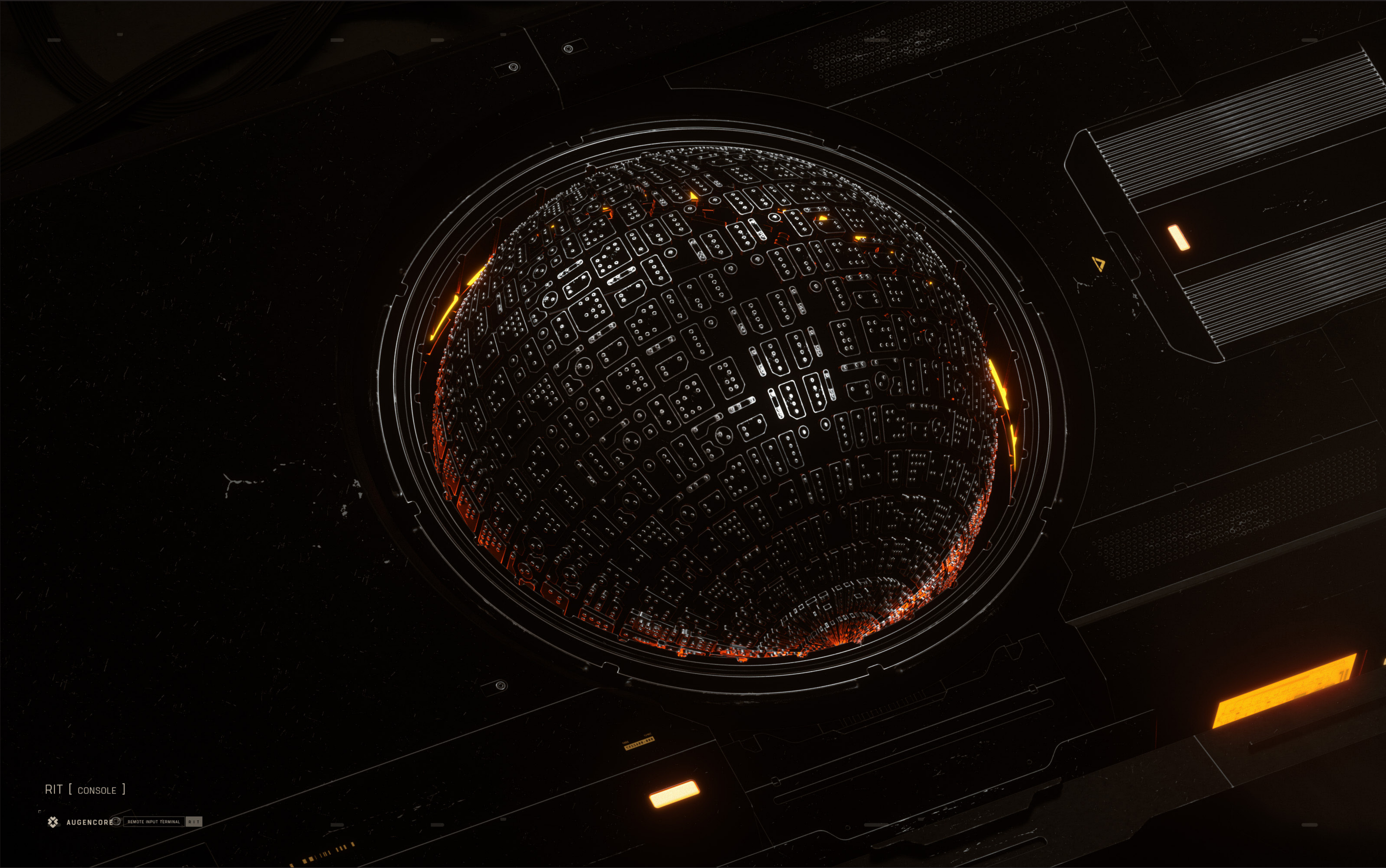
RIT [ CONSOLE & PROJECTOR UNIT ]





RIT [ CONSOLE ]





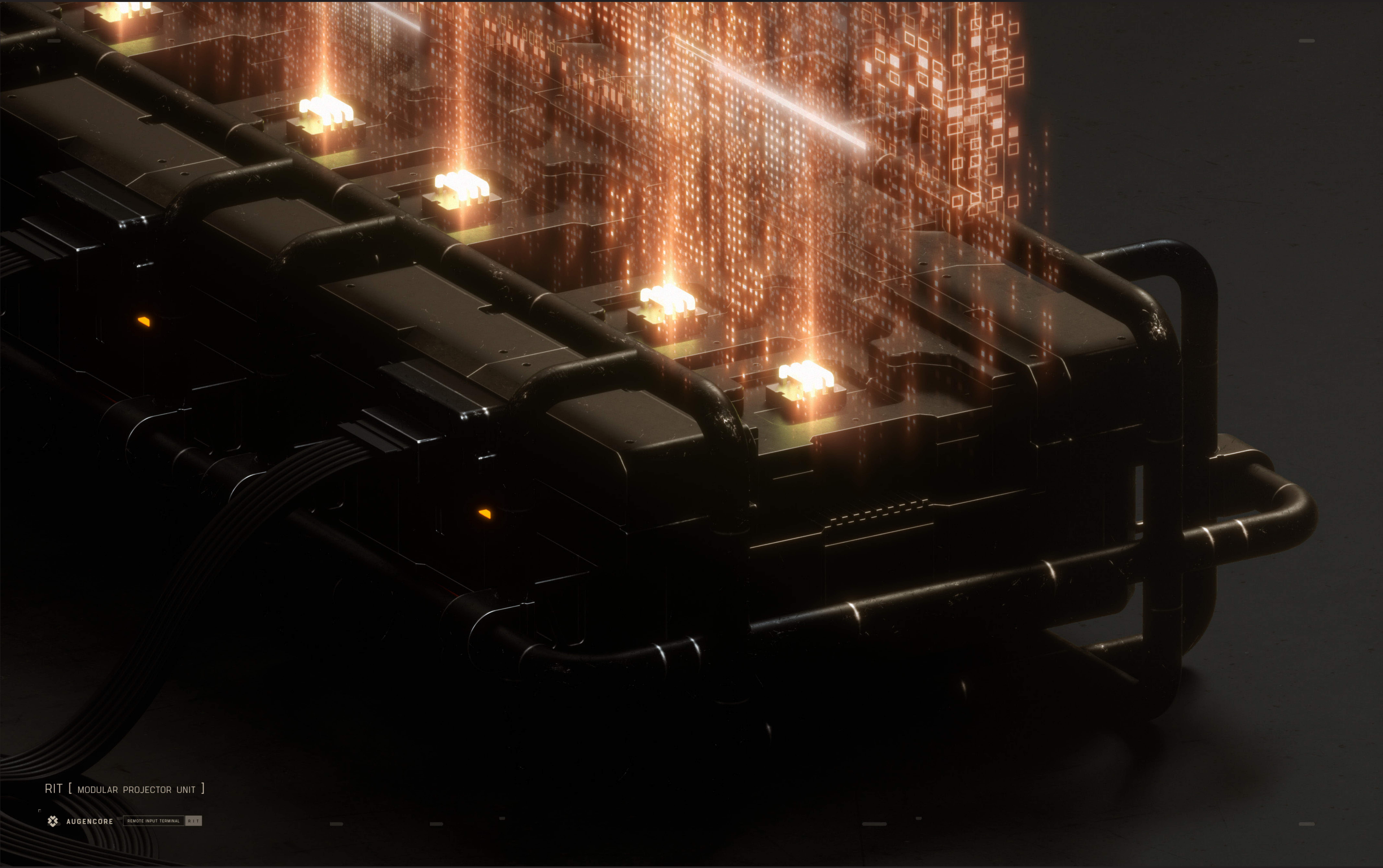
RIT [ CONSOLE ]



RIT - Modular Projector Unit

The terminal itself is connected to a projector array, that can be arranged in a number of ways, depending on what the user needs to display. For example, a linear array works better for streams of data and windows, while a grid works better for a 3d map or a spatial hologram.





RIT [ MODULAR PROJECTOR UNIT ]





RIT [ MODULAR PROJECTOR UNIT ]





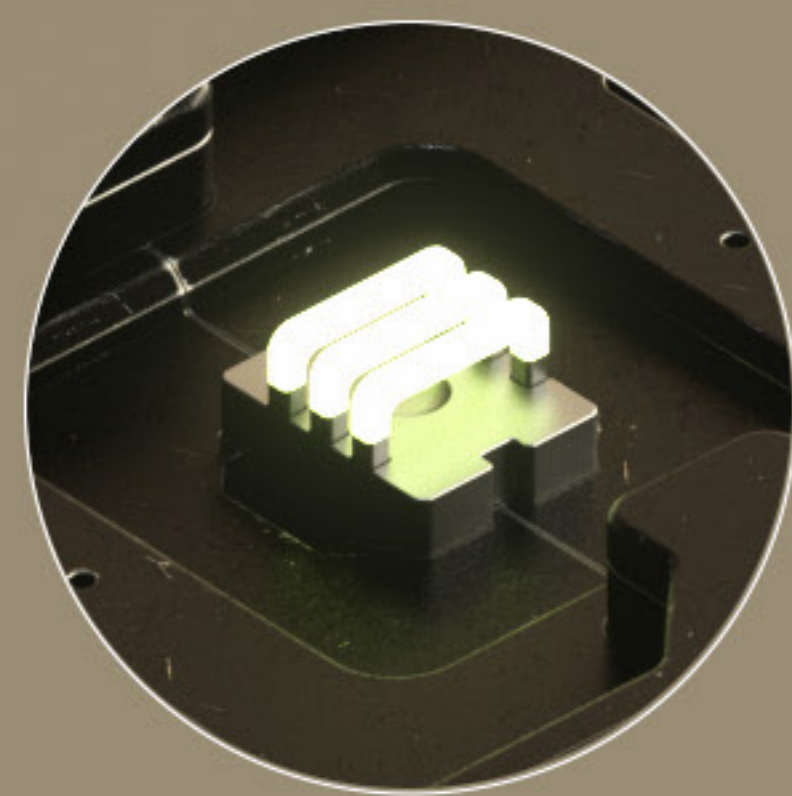
RIT [ MODULAR PROJECTOR UNIT ]



SPECIFICATIONS

The Terminal and projector are quite representative of the Augencore mentality - modular and easily customized and hybridized.





PROJECTION FILAMENT

PROJECTOR ARRAY LINK

BATTERY / FUEL CELL (ATTACHMENT)

KEY CONFIG (SPHERICAL)

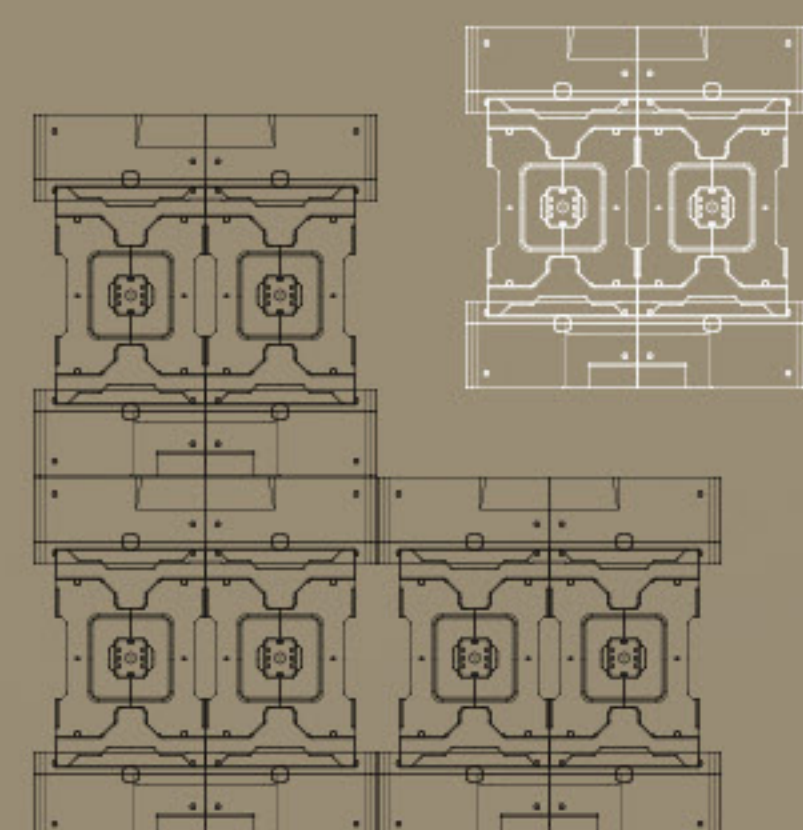
KEY INPUT MAGNETIC GYRO

HOLO PROJECTOR

HOLO PROJECTOR (BATTERY)

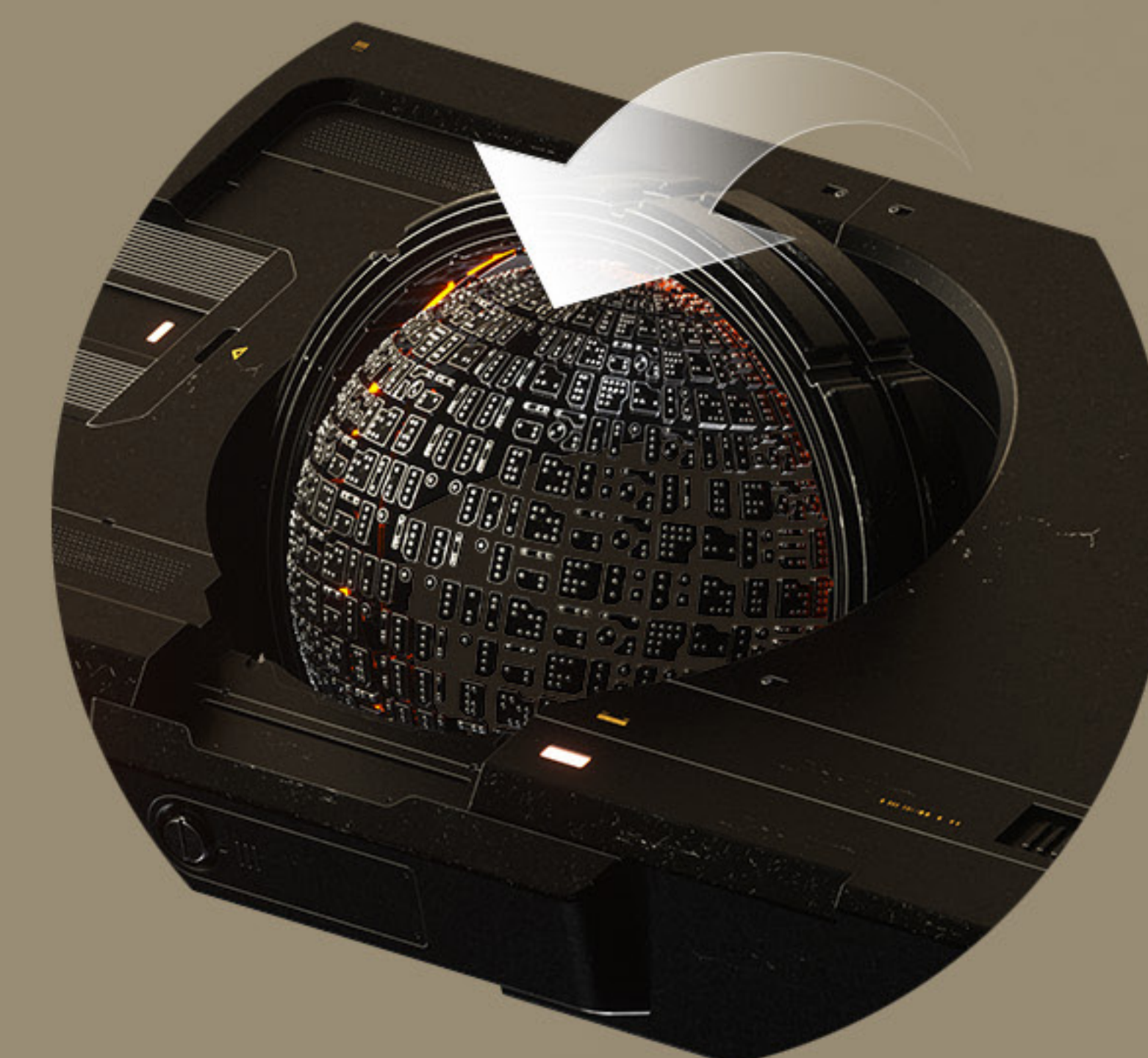
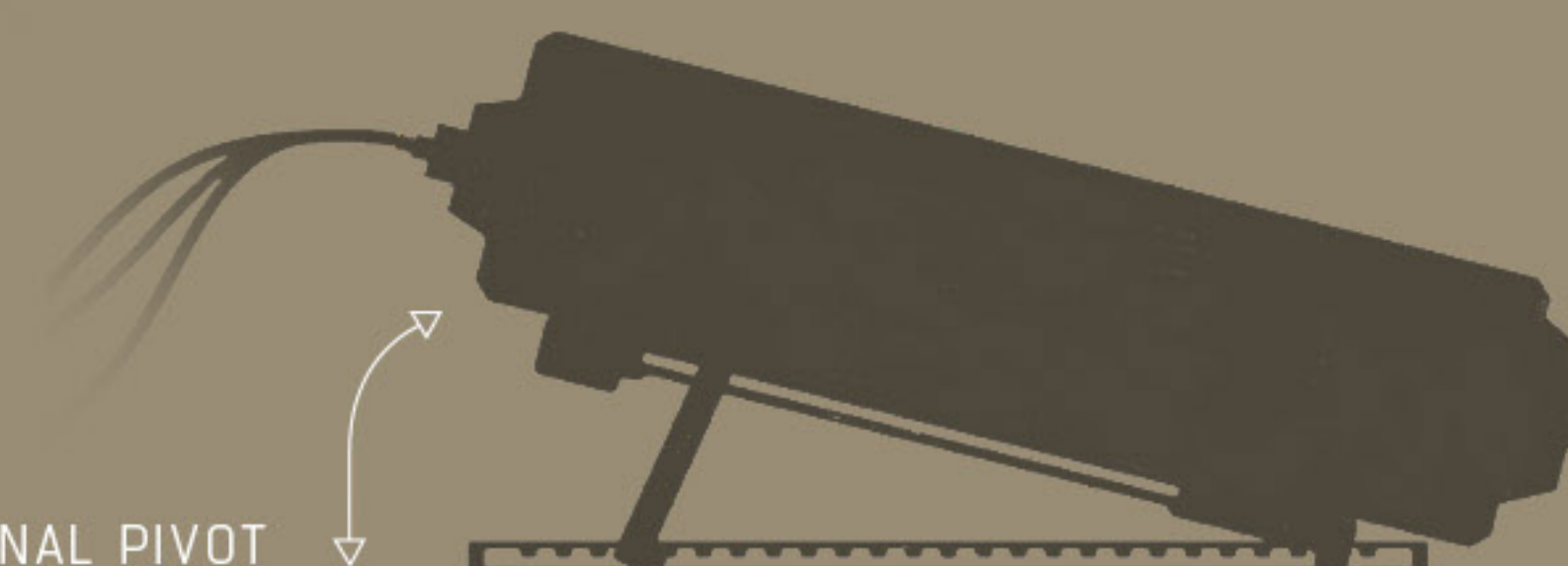
TERMINAL MOBILE CASE (LOWER)

GYRO PIVOT



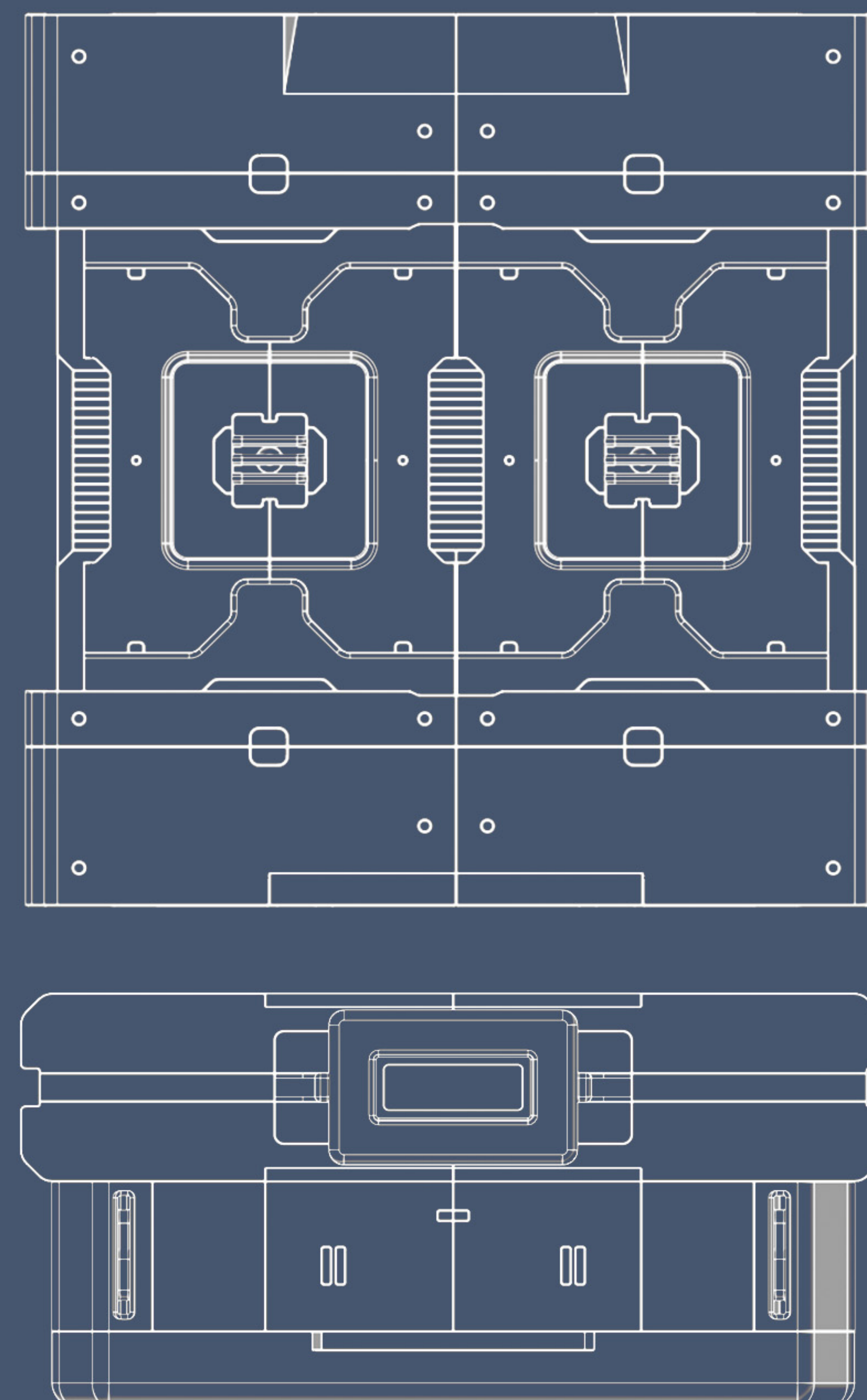
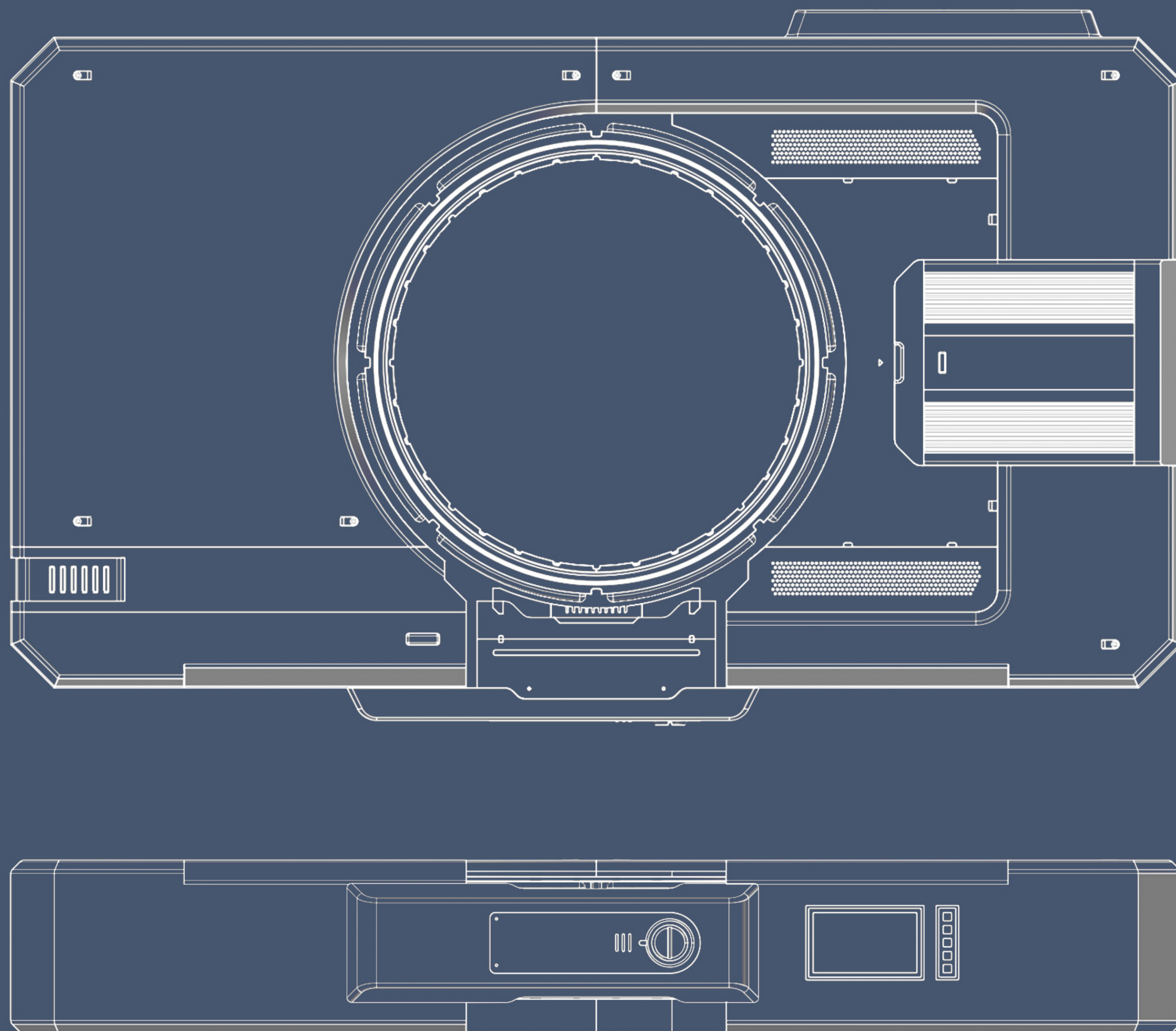
MODULAR CONFIGURATION

TERMINAL PIVOT



RIT [ SPECS ]





RIT [ SPECS ]



RIT User Interface Language

The Augencore interface language is a complex and vast web of information.







RIT [ UI ]



AUGENCORE

REMOTE INPUT DEMO





 PARALLEL