



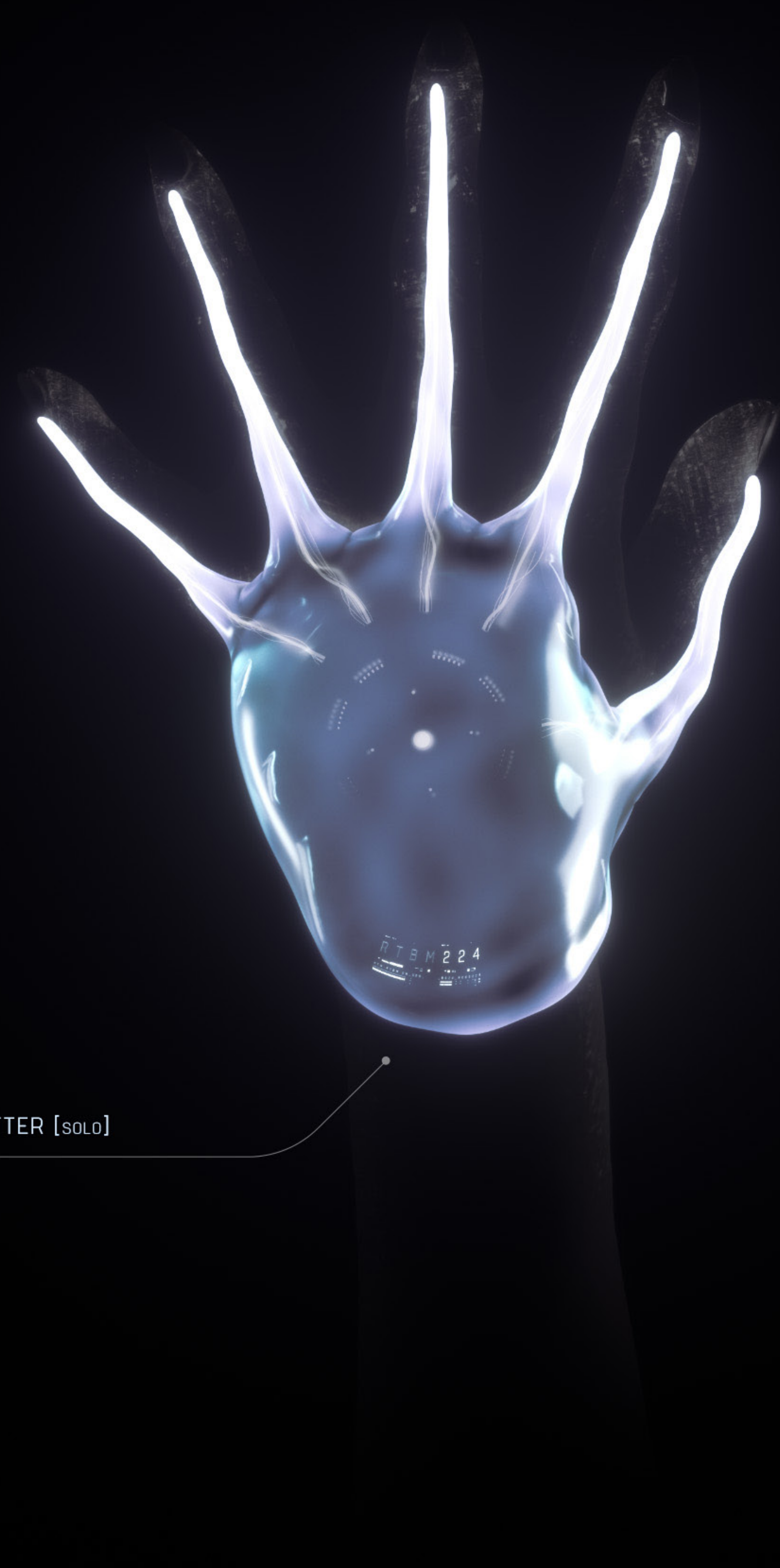
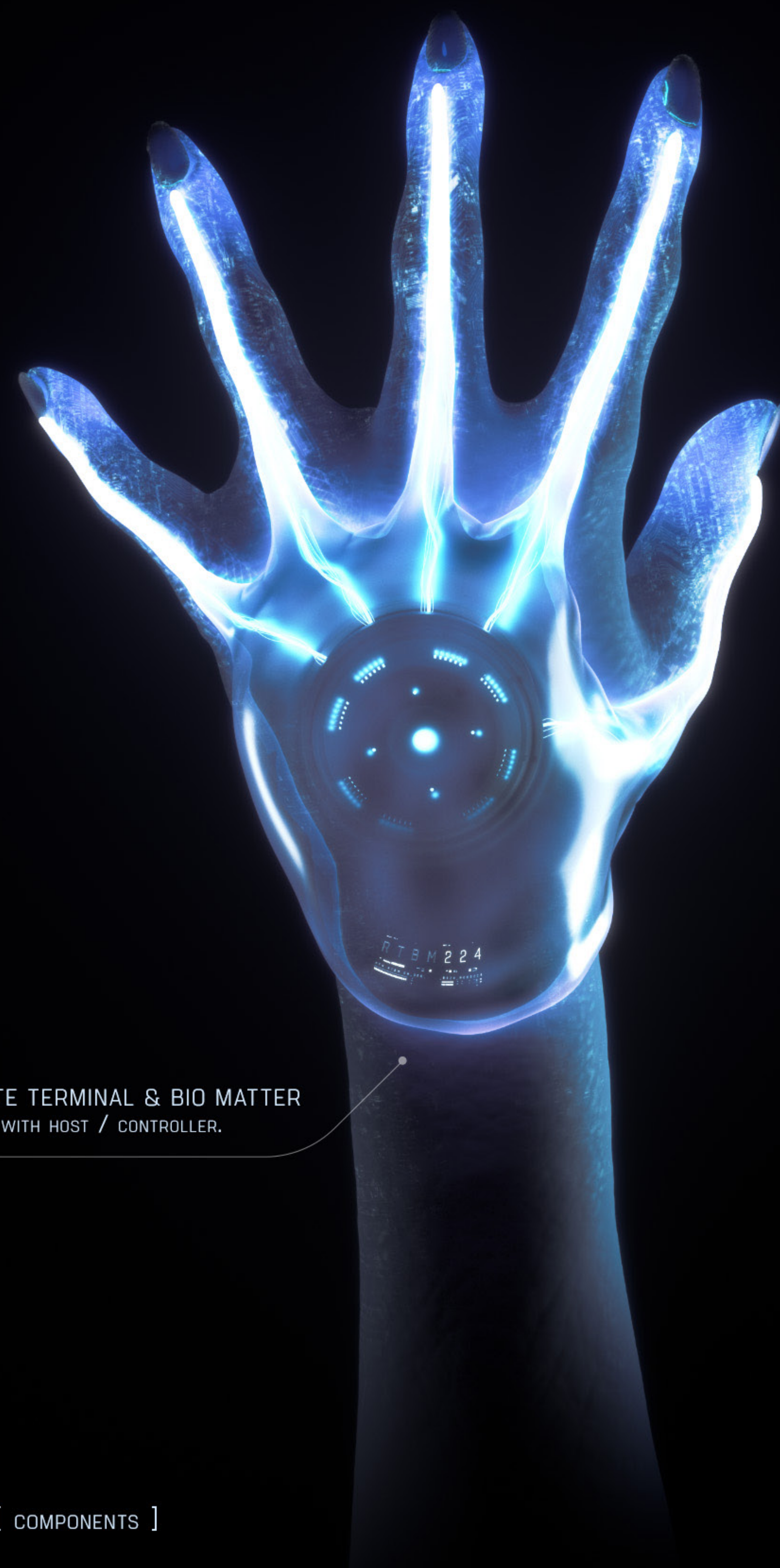
KATHARI

REMOTE TERMINAL BIO MATTER

R T B M

The Kathari Remote Terminal Bio Matter (RTBM) allows full manipulation, augmenting, and supercharging of the body's electrical impulses and nervous system to display and transfer data and information.

Along with it's own ability to engineer uploaded data into a visual and physical spectrum, the Bio Matter turns any organic compound it bonds with into a projector that allows for direct manipulation and control at a cellular level.



REMOTE TERMINAL & BIO MATTER
BONDED WITH HOST / CONTROLLER.

REMOTE TERMINAL [SOLO]

BIO MATTER [SOLO]

RTBM [COMPONENTS]

Once bonded with the Bio Matter, the host (sometimes referred to as a “Controller”) needs only to think or gesture, and an instantaneous connection and transfer is bounced between the Controller and the RTBM.

The Bio Matter can conform to any shape that the Controller dictates. For example, bonding to the Controller’s temple could produce an ocular display rather than from a hand or limb as pictured here.

In contrast, it could grow to the size of a backpack, attaching to the Controller’s back, making essentially the entire body a live projector.

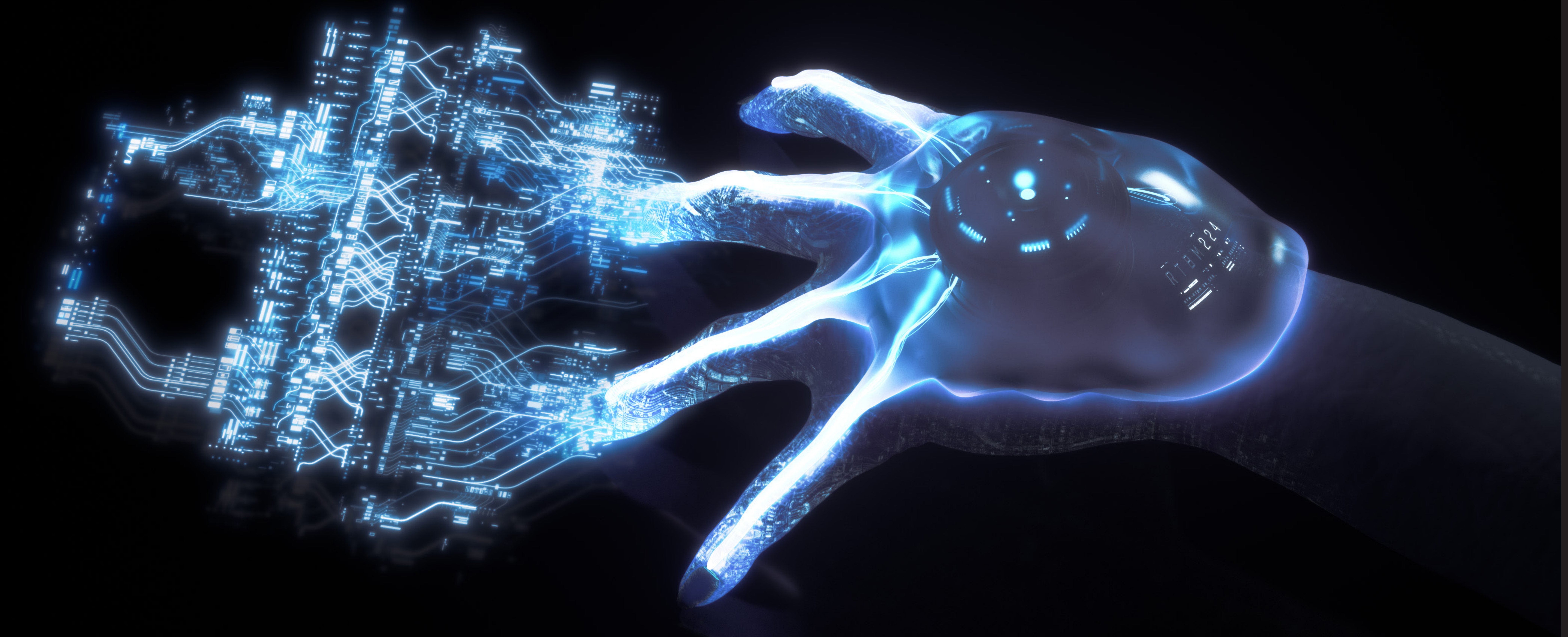


RTBM DATA PROJECTION [HOLO]

The RTBM also allows the Controller to transfer or display data via any surface as well as transferring to another controller bonded with an RTBM.

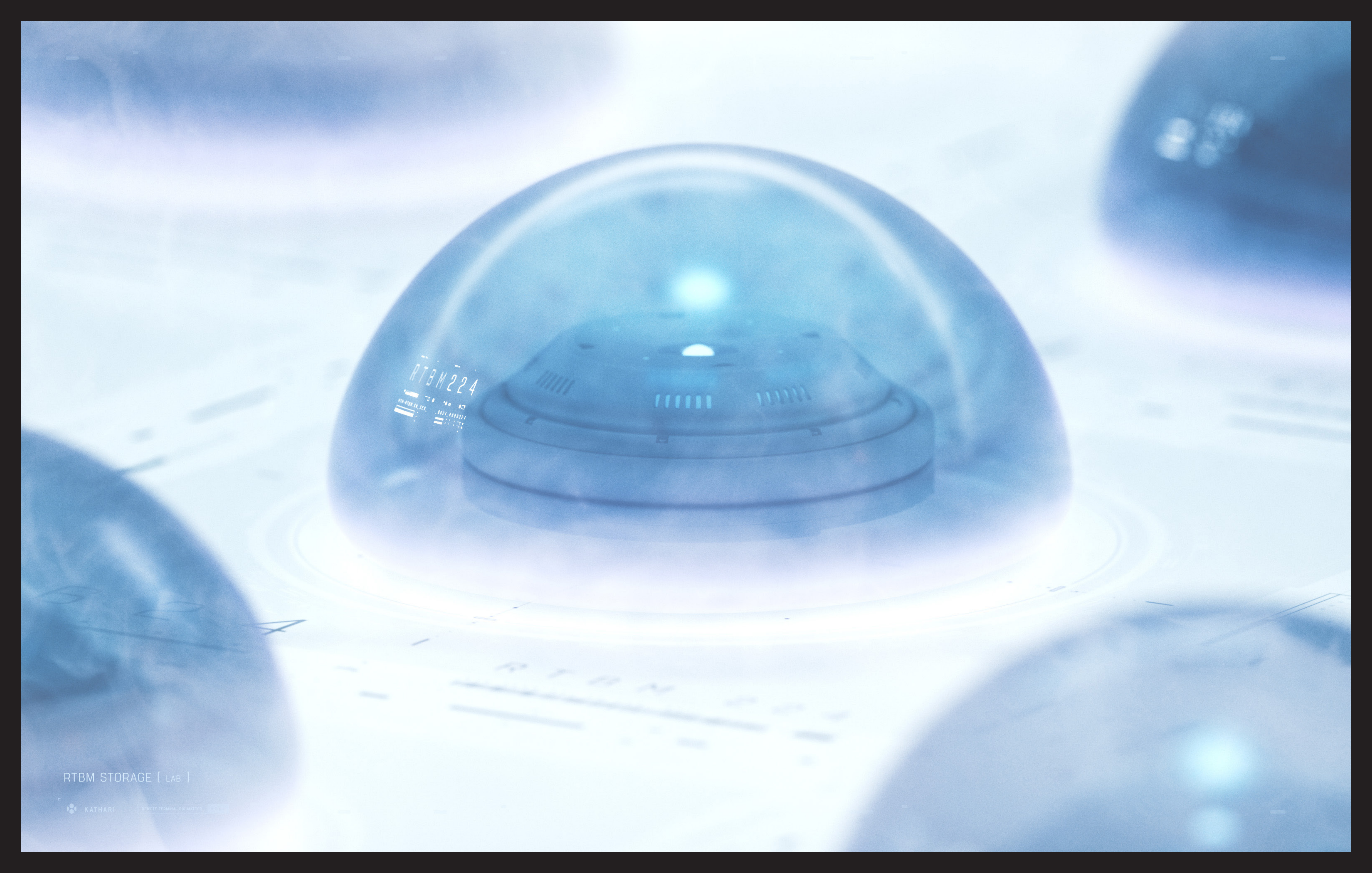
This allows for a rapid and easy transfer of information. For example a commander could carry important tactical information and share it via projection to troops, or transfer via touch to another Controller in another unit.

Additionally because of the unique genetic composition that all the Kathari share, it makes it nearly impossible to decrypt or hack data embedded within an RTBM, making it a highly secure way to transport and share sensitive data.



RTBM DATA PROJECTION [SURFACE]

RTBM's are made from a combination of ceramic, metal and synthesized organic tissue. The Bio Matter is grown, like any living thing, around the Terminal itself, bonding it completely as one entity once fused together.

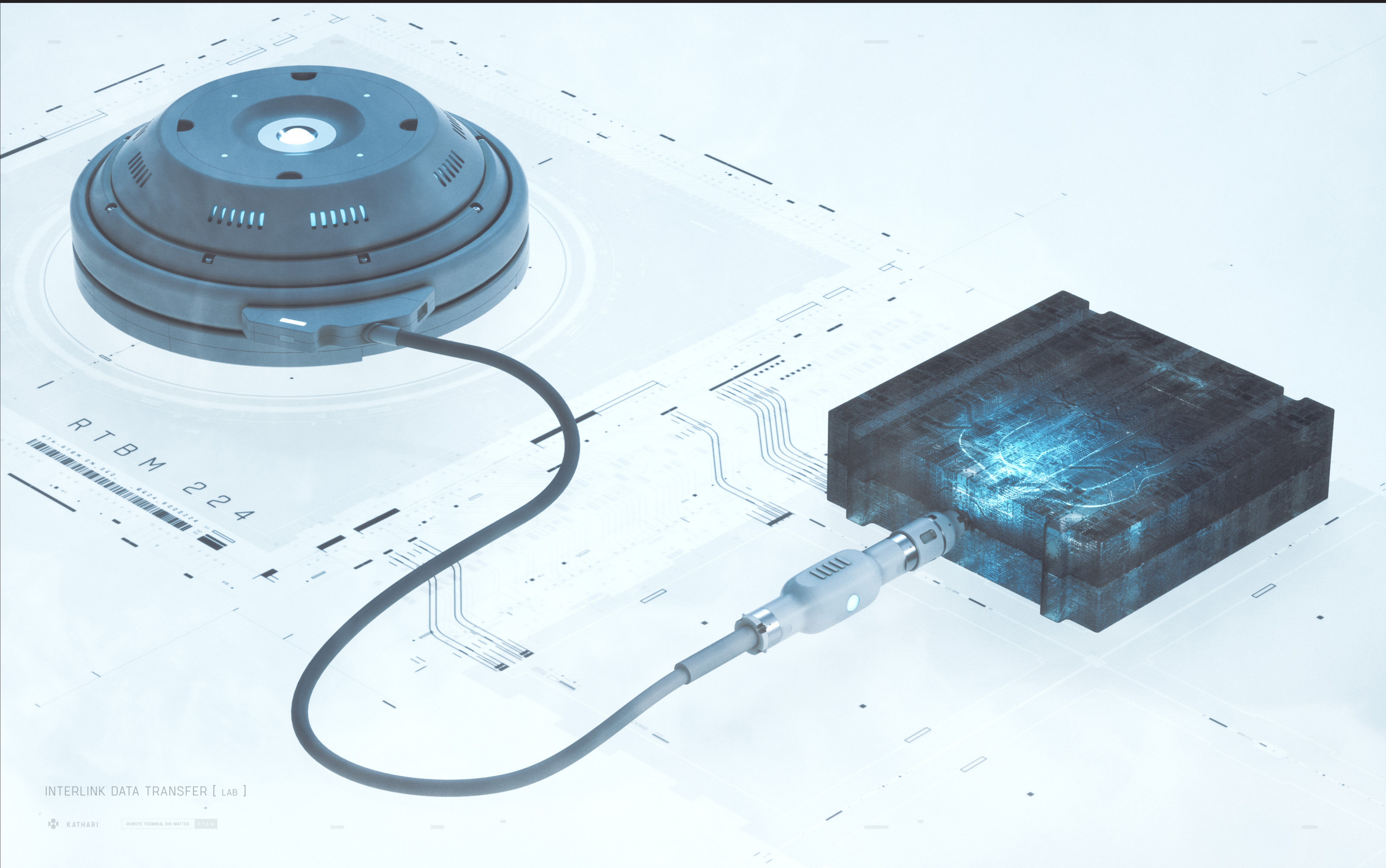


RTBM STORAGE [LAB]

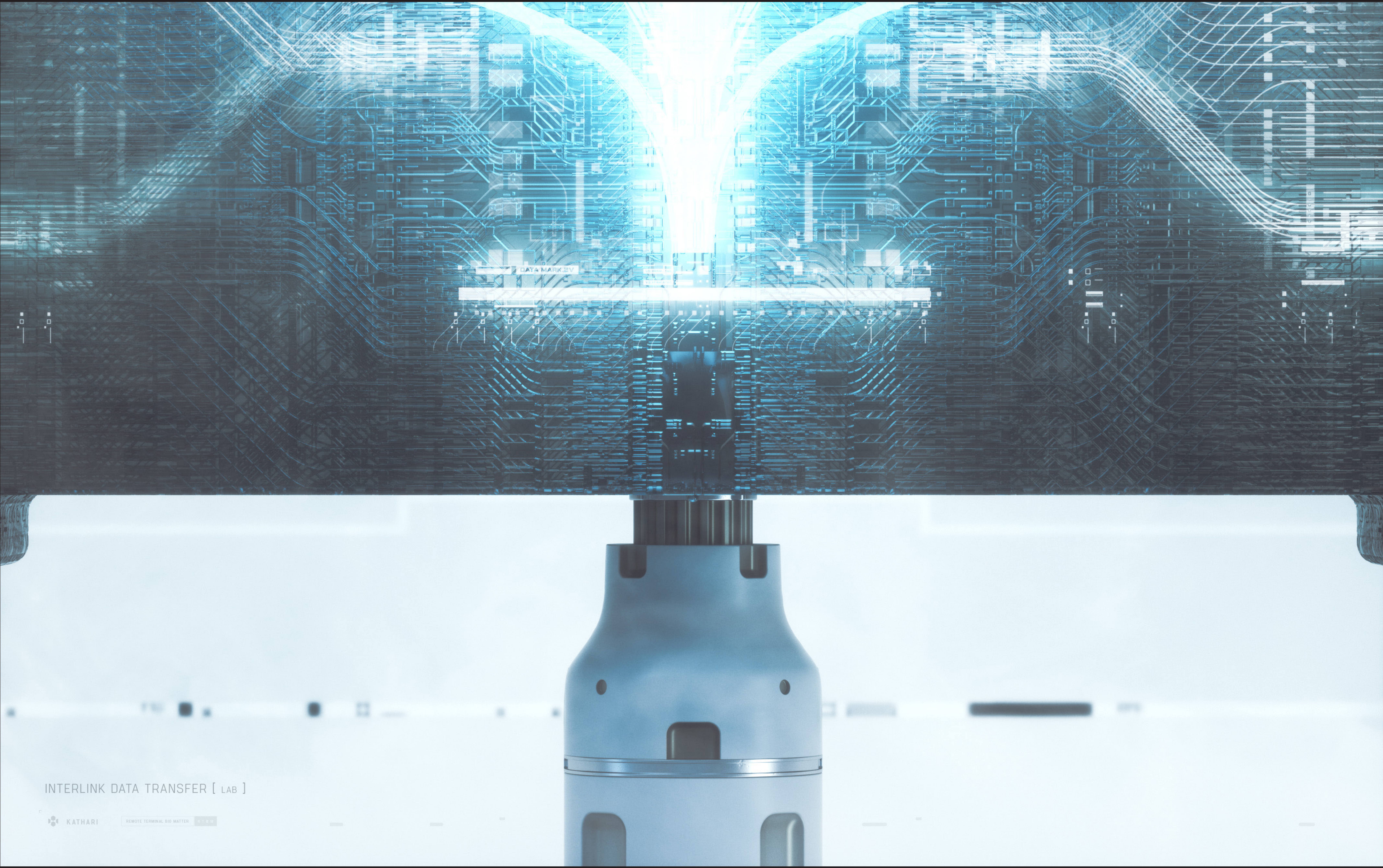
Using the RTBM INTERLINK module, data transfer between the Terminal and Data Storage units is possible.

The INTERLINK attaches to the Terminal via a magnetic seal, and allows organic matter to extend through the Interlink, into the drives, where it collects the data.

The Data Storage units are easily interchangeable, and can connect with one another to combine or sort large sets of information and data.



INTERLINK DATA TRANSFER [LAB]



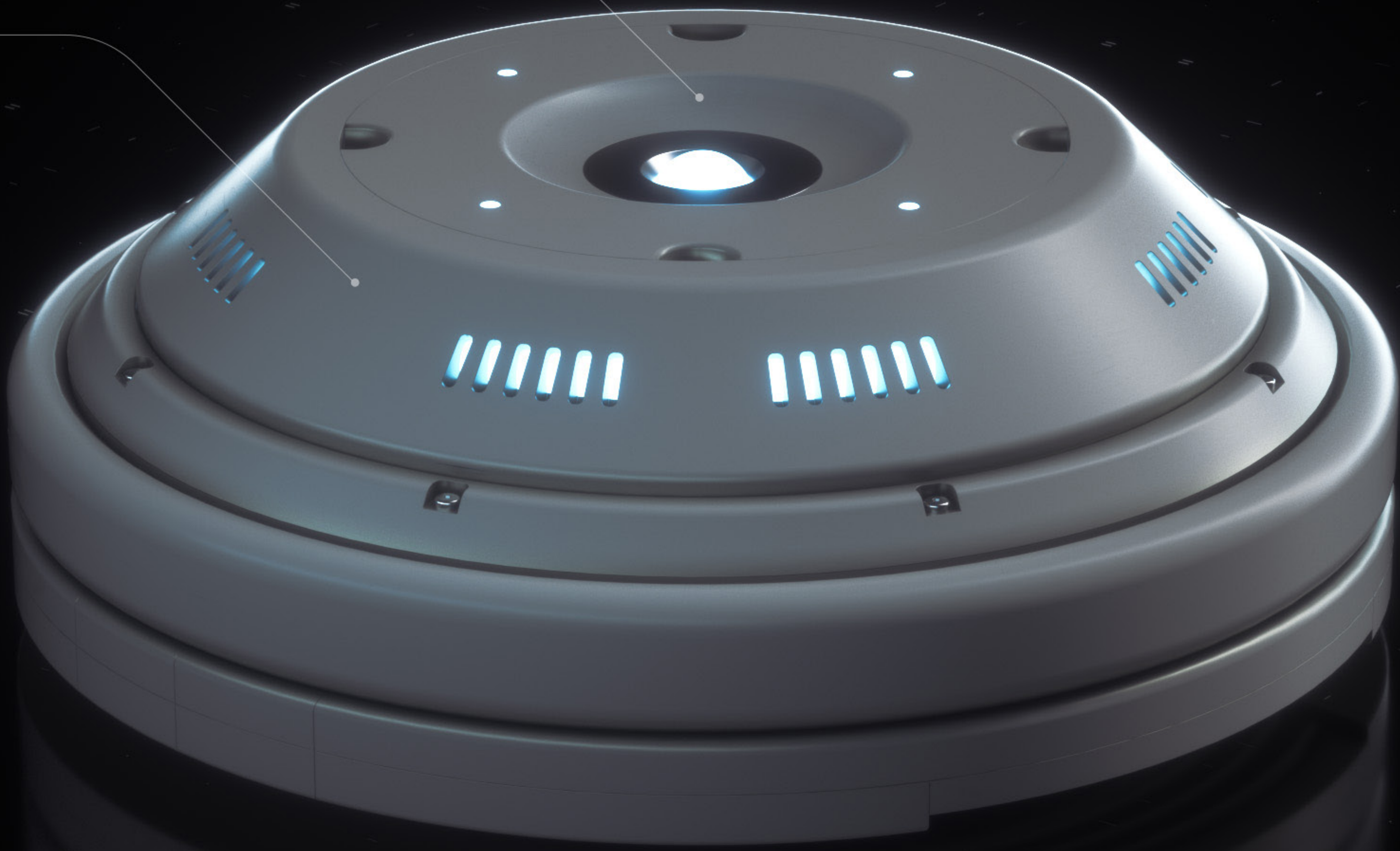
INTERLINK DATA TRANSFER [LAB]

INTERLINK DATA TRANSFER [LAB]

The RTBM is both a data storage device as well as a control unit for the Bio Matter. It's made from a nearly indestructible ceramic compound, and can withstand virtually any gravity pressure or deep space vacuum.

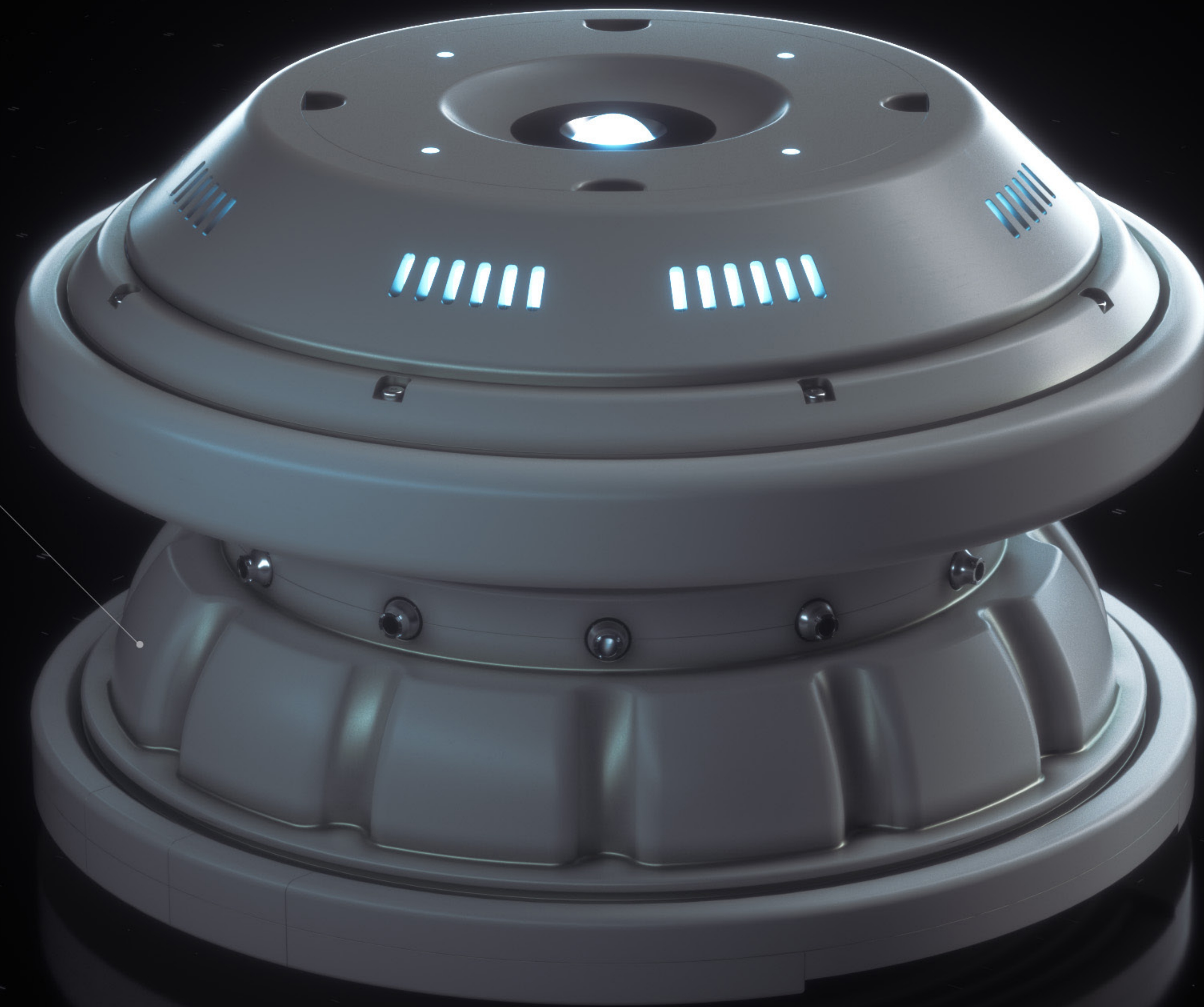
UPLOADED DATA IS HELD AND
PROCESSED WITHIN THE CENTRAL CORE.

SYNTHESIZED ORGANIC MATTER SITS
WITHIN THE MAIN HOUSING.



RTBM [STASIS]

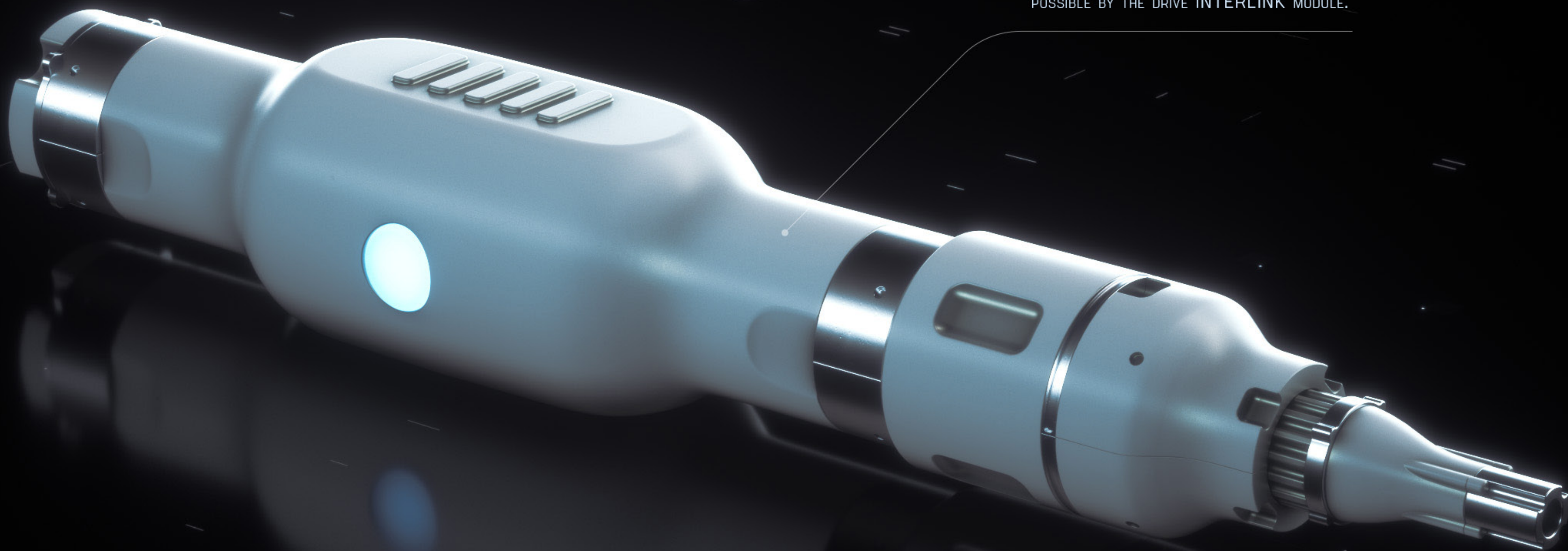
THE RTBM OPENS TO ALLOW THE
BIO MATTER TO ENGAGE.



RTBM [OPEN]

ACTIVE CONNECTIONS MOVE FROM THE INNER
CORE TO CREATE PATHWAYS FOR THE BIO MATTER.

RTBM [ACTIVE]



RTBM DATA TRANSFER IS MADE
POSSIBLE BY THE DRIVE INTERLINK MODULE.

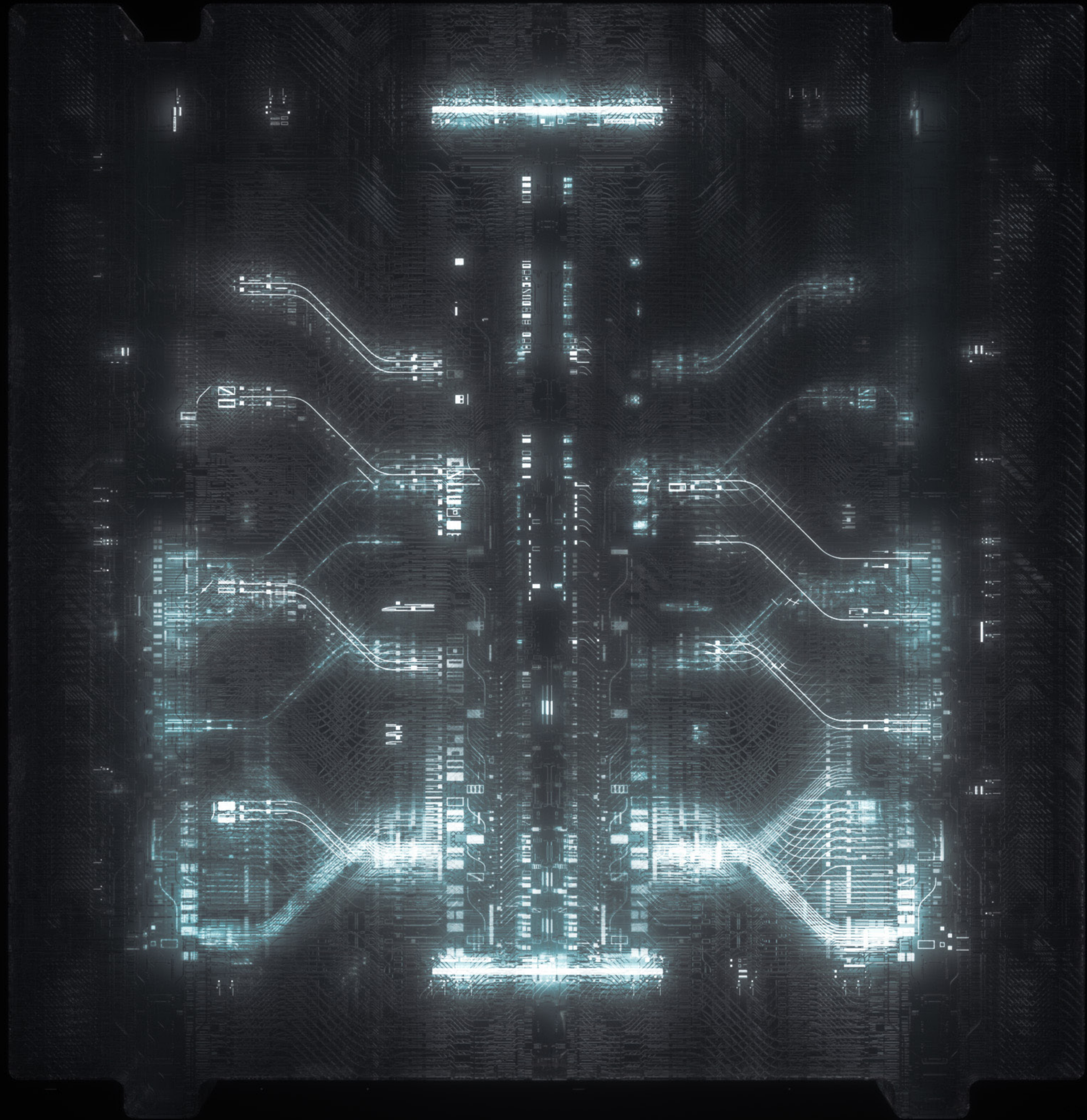
ORGANIC MATTER TRAVELS THROUGH THE
INTERLINK AND COLLECTS DATA FROM STORAGE.

RTBM DATA TRANSFER [INTERLINK]

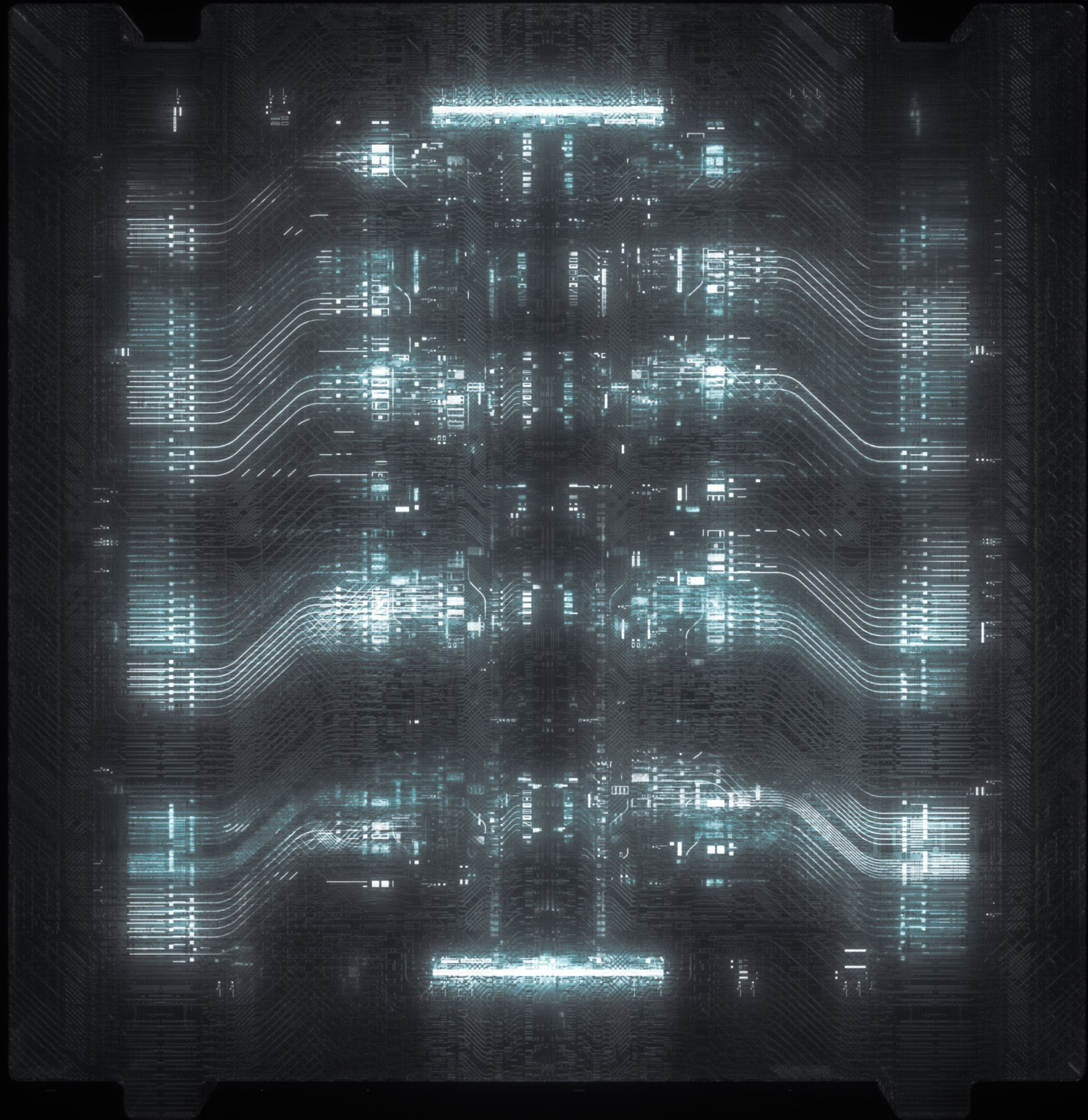
INTERLINK CONNECTION SECURES
TO THE RTBM WITH A MAGNETIC SEAL.

RTBM DATA TRANSFER IS MADE
POSSIBLE BY THE DRIVE INTERLINK MODULE.

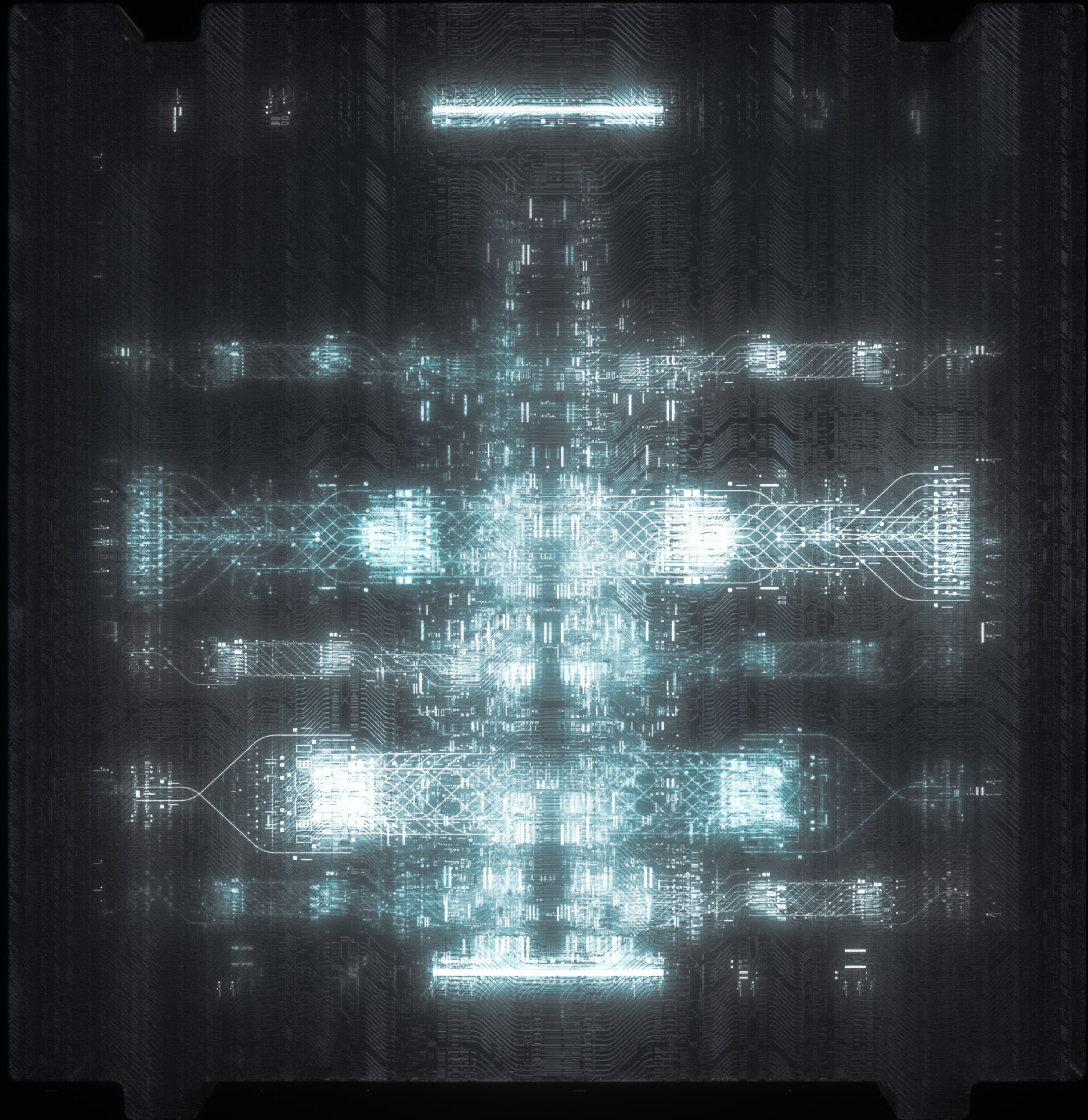
RTBM DATA TRANSFER [INTERLINK]



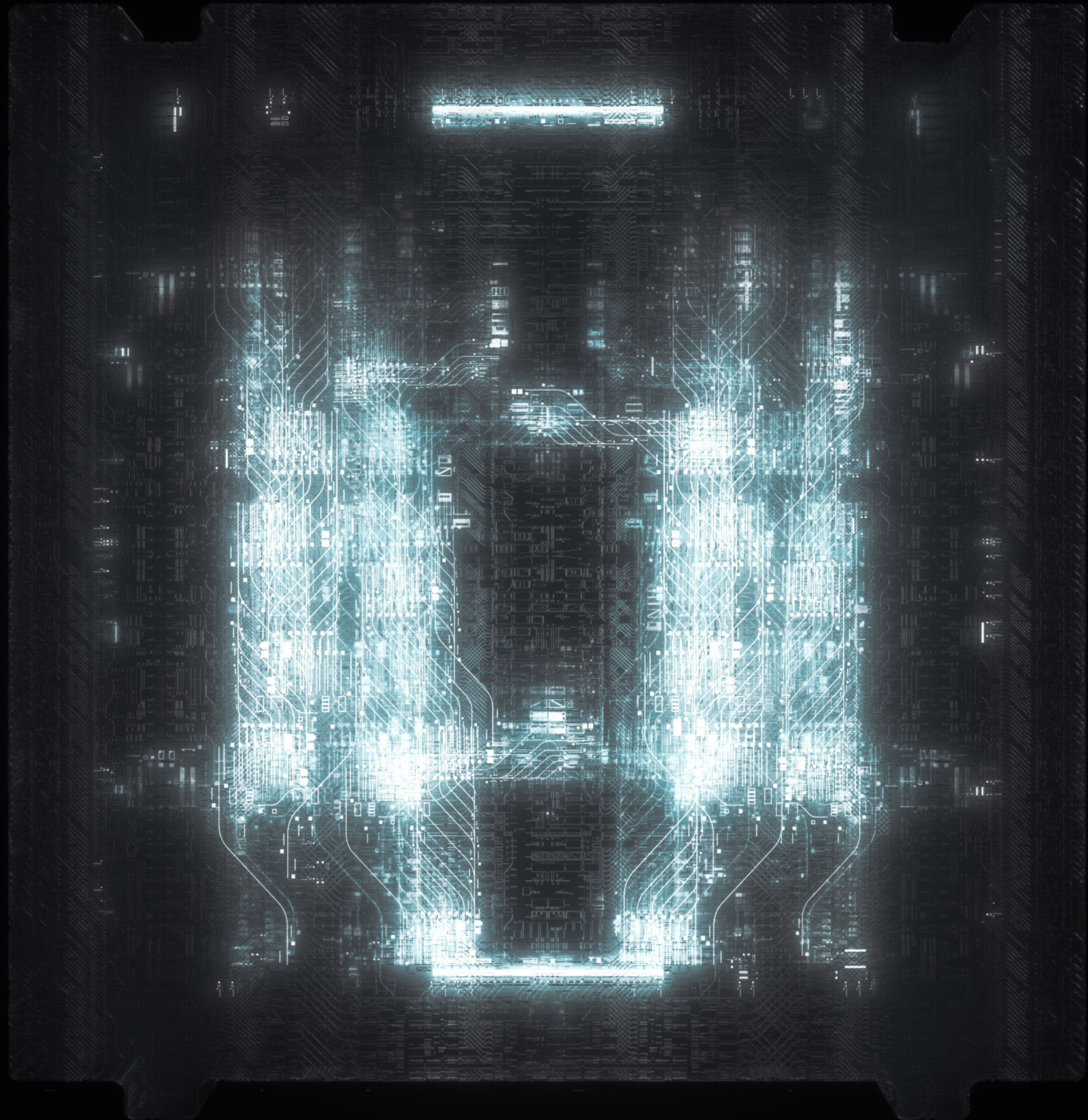
RTBM DATA STORAGE



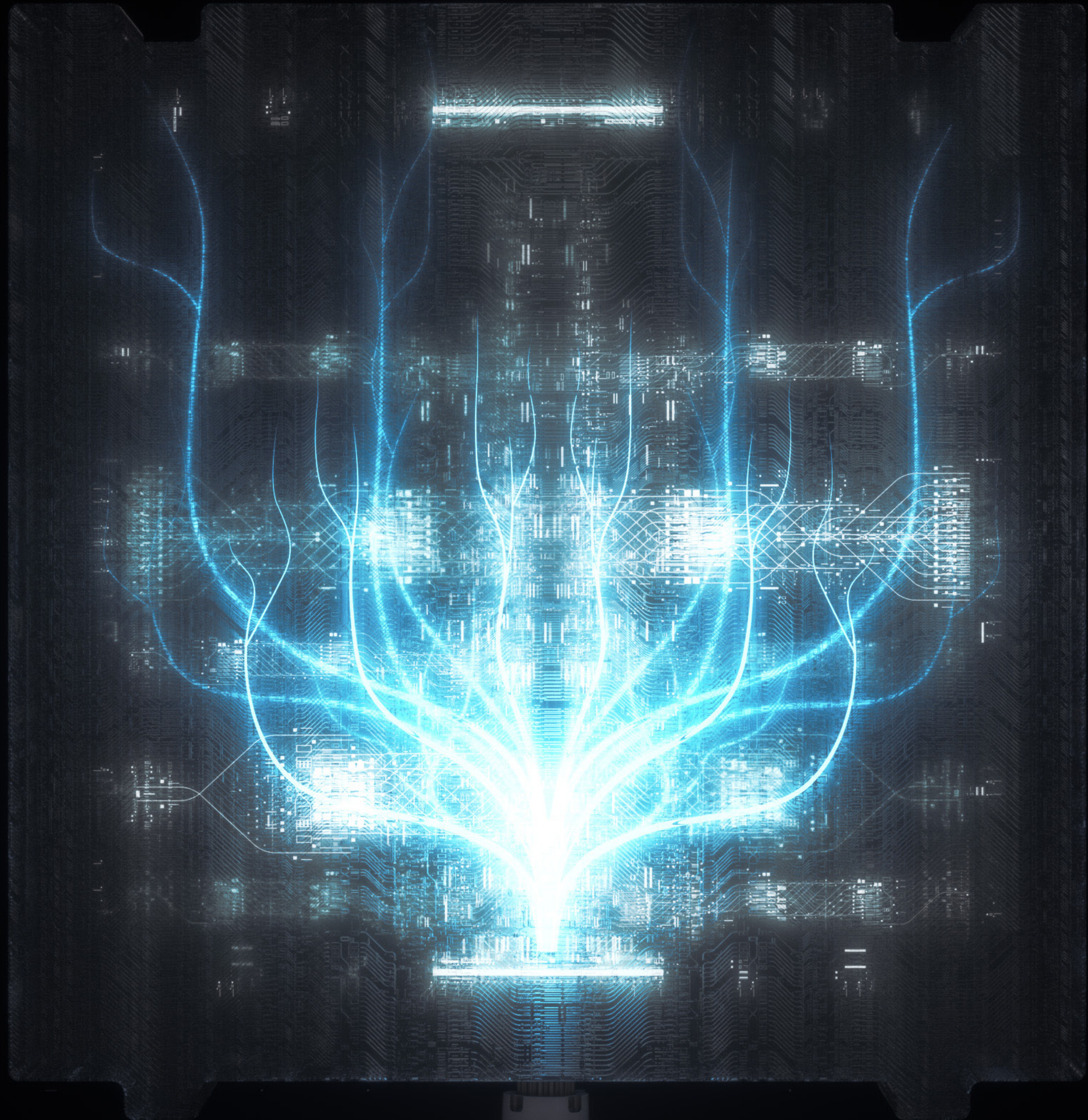
RTBM DATA STORAGE



RTBM DATA STORAGE



RTBM DATA STORAGE



RTBM DATA STORAGE [TRANSFER]



REMOTE TERMINAL BIO MATTER RTBM



 PARALLEL