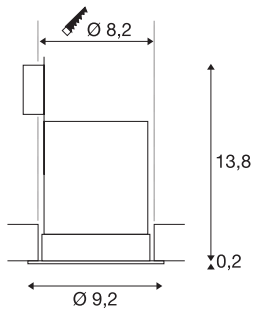




CONTONE

recessed fitting, LED, 2000-3000K, round, white, rigid, 13W, including leaf springs

With the CONTONE recessed ceiling light you can set the lighting mood however you desire. When dimming the built-in premium COB LED module, the colour of light changes from 3000K to 2000K, which is the same effect as when dimming a filament lamp. The electrical connection is made directly to the 230V mains supply thanks to the built-in LED driver.



TECHNICAL DATA

Item no.	161291
IP Code	IP 44
Assembly	Recessed
Assembly details	Ceiling
Dimmable	Yes
Dimming technology	Dim-to-Warm, trailing edge
Primary nominal voltage	220-240V ~50/60Hz
Secondary power / voltage	350 mA
Safety class	II
Wattage	15 W
Minimum ambient temperature	-20 °C
Maximum ambient temperature	50 °C
Operating efficiency (LOR)	0,811
Number of luminaires at LS B16A	67
Number of luminaires at LS C16A	84
Level of inrush current	10 A
Duration of inrush current	40 µs
Stroboscopic effect (SVM)	0.03
Lumen	1000 lm
Colour temperature	2000-3000 Kelvin
Beam angle	30 °
Color	white

Light Source

916619	
--------	---

CRI	90
LXXBXX data	L70B50
Service life	40000 h
Light distribution	rotational symmetric
Light outlet	direct
Height	14 cm
Diameter	9.2 cm
Net weight	0.324 kg
Gross weight	0.402 kg
Shape of cut-out	round
Installation depth	13.5 cm
Installation diameter	8.2 cm
BIG WHITE Page	231