

# Face Reading Dictionary

Facial Features Decoded

Varun L. Rupani



INDIA • SINGAPORE • MALAYSIA



Copyright © Varun L. Rupani 2024  
All Rights Reserved.

ISBN  
Paperback 979-8-89277-256-3  
Hardcase 979-8-89322-626-3

This book has been published with all efforts taken to make the material error-free after the consent of the author. However, the author and the publisher do not assume and hereby disclaim any liability to any party for any loss, damage, or disruption caused by errors or omissions, whether such errors or omissions result from negligence, accident, or any other cause.

While every effort has been made to avoid any mistake or omission, this publication is being sold on the condition and understanding that neither the author nor the publishers or printers would be liable in any manner to any person by reason of any mistake or omission in this publication or for any action taken or omitted to be taken or advice rendered or accepted on the basis of this work. For any defect in printing or binding the publishers will be liable only to replace the defective copy by another copy of this work then available.

# Dedication

This Book is dedicated wholeheartedly to one and only one superpower, the almighty, the Mahadev, LORD SHIVA.



# Disclaimer

Before you dive into the Face Reading Dictionary, it is important to note that this book is designed as an educational guide to face reading, a field that correlates facial features with personality traits. This book should not be used as a standalone tool for critical personality assessment or decision-making, nor should it replace advice from qualified professionals in psychological or related fields. The author has diligently compiled the information to be accurate and reflective of current understanding in face reading. However, the field is dynamic and interpretations can vary; thus, complete accuracy of the content cannot be guaranteed. The insights provided here are based on a combination of established face reading methodologies and the author's research. They are intended for general guidance and not as definitive judgments about individual characters. Face reading, by its nature, can offer diverse perspectives, and this book aims to present a balanced view without passing judgment or assigning labels. Readers should approach this content with an open mind and consider it as one of many tools for understanding human behaviour and personality. All material in this book is protected under copyright law. Any unauthorized copying, reproduction, or distribution of the book's content is strictly prohibited. By

engaging with this book, you acknowledge and accept this disclaimer, taking full responsibility for how you interpret and apply the information within, and agreeing to use it responsibly and ethically in personal or professional contexts.

# Contents

*A Special Acknowledgment*..... 21  
*Preface* ..... 23

## PART 1

The Legacy of Physiognomy..... 27  
Limits of Face Reading..... 31

## PART 2

Accountable ..... 37  
Acknowledgement-Seeking..... 38  
Acquisitive..... 39  
Action-Oriented..... 40  
Adaptable ..... 41  
Adventurous - 1..... 42  
Adventurous - 2..... 43  
Aesthetically Inclined ..... 44

Contents

---

Aggressive.....	45
Analytical - 1 .....	46
Analytical - 2.....	47
Analytical - 3.....	48
Analytical - 4.....	49
Appreciation for Proven Methods.....	50
Appreciation-Seeking .....	51
Articulate .....	52
Assertive - 1.....	53
Assertive - 2.....	54
Attention to Detail.....	55
Attentive Listener.....	56
Attentiveness .....	57
Authoritative - 1 .....	58
Authoritative - 2.....	59
Authority-Seeking .....	60
Balanced in Intimacy.....	61
Balanced Perception .....	62
Big Picture Thinker.....	63
Big-Picture Oriented .....	64
Brilliant.....	65
Broad Perspective .....	66



.....

Business-Savvy.....	67
Calculating.....	68
Calculative Mind.....	69
Cause-Motivated .....	70
Cautious - 1 .....	71
Cautious - 2 .....	72
Cautious Decision-Maker.....	73
Cheerful.....	74
Cognitively Fluid .....	75
Collector .....	76
Committed .....	77
Communication-Valuing.....	78
Communicative.....	79
Compassionate - 1 .....	80
Compassionate - 2.....	81
Compassionate - 3.....	82
Competitive .....	83
Compliant.....	84
Compromising.....	85
Confident.....	86
Conflict Magnet.....	87
Conflict-Averse - 1 .....	88

Conflict-Averse - 2 .....	89
Conformist.....	90
Consensus-Seeking.....	91
Conservative.....	92
Control-Oriented - 1.....	93
Control-Oriented - 2.....	94
Control-Oriented - 3.....	95
Conventional - 1 .....	96
Conventional - 2 .....	97
Creative Planner.....	98
Creative Problem-Solver.....	99
Creative.....	100
Critical Perceptive .....	101
Critical Thinking .....	102
Decisive.....	103
Dedicated Learner .....	104
Detail-Oriented - 1 .....	105
Detail-Oriented - 2 .....	106
Detail-Oriented - 3 .....	107
Detail-Oriented - 4 .....	108
Detail-Oriented - 5 .....	109
Determined - 1.....	110

.....

Determined - 2.....	111
Determined - 3.....	112
Diligent.....	113
Direct.....	114
Directive .....	115
Disciplined - 1 .....	116
Disciplined - 2 .....	117
Diverse Interests .....	118
Dominant .....	119
Domineering.....	120
Efficiency-Oriented.....	121
Efficient .....	122
Eloquent .....	123
Emotionally Defensive .....	124
Emotionally Driven in Career .....	125
Emotionally Driven.....	126
Emotionally Expressive.....	127
Empathetic - 1 .....	128
Empathetic - 2 .....	129
Empathetic - 3 .....	130
Empowered.....	131
Enduring.....	132

Environmentally Sensitive .....	133
Expectant of Compliance .....	134
Experimentative .....	135
Explorative .....	136
Expressive - 1 .....	137
Expressive - 2 .....	138
Extremely Focused .....	139
Extroverted.....	140
Fact-Oriented.....	141
Factual .....	142
Fair-Minded.....	143
Far-Sighted.....	144
Financially Focused .....	145
Flexible.....	146
Focus.....	147
Focused .....	148
Free-Spender .....	149
Generous - 1 .....	150
Generous - 2 .....	151
Generous - 3 .....	152
Generous - 4 .....	153
Gentle .....	154

.....

Goal-Oriented.....	155
Good with Follow Through.....	156
Good-Natured.....	157
Guarded.....	158
Harmonious.....	159
Highly Curious .....	160
High-Minded.....	161
Holistic Thinker.....	162
Hospitable.....	163
Humorous.....	164
Idea-Focused .....	165
Idealistic.....	166
Imaginative - 1 .....	167
Imaginative - 2.....	168
Impact-Driven.....	169
Impatience .....	170
Impulsive - 1 .....	171
Impulsive - 2.....	172
Inclusive.....	173
Incorporative.....	174
Independent - 1.....	175
Independent - 2.....	176

Independent - 3.....	177
Influential .....	178
Innately Powerful .....	179
Innovative - 1 .....	180
Innovative - 2 .....	181
Innovative - 3 .....	182
Insightful Thinkers.....	183
Insightful.....	184
Insomniac Tendencies.....	185
Intellectually Curious .....	186
Intellectually Developed.....	187
Interpersonally Flexible .....	188
Intimacy-Oriented .....	189
Introverted .....	190
Intuitive - 1 .....	191
Intuitive - 2.....	192
Kind.....	193
Leadership Qualities.....	194
Leadership-Oriented .....	195
Less Gullible.....	196
Logical - 1 .....	197
Logical - 2 .....	198

.....

Logical - 3 .....	199
Logical Thinking.....	200
Love-Focused .....	201
Loyal .....	202
Manifestative.....	203
Measured Initiator.....	204
Mentally Assertive .....	205
Mentally Focused & Analytical.....	206
Mentally Organized.....	207
Methodical - 1.....	208
Methodical - 2.....	209
Mistrustful .....	210
Multifaceted Career Interests.....	211
Multifaceted Perspective .....	212
Non-Aggressive .....	213
Non-Competitive.....	214
Non-Conformist - 1 .....	215
Non-Conformist - 2.....	216
Non-Confrontational .....	217
Objective - 1 .....	218
Objective - 2 .....	219
Observant .....	220

Open-Minded.....	221
Optimistic.....	222
Outspoken .....	223
Overly Responsible.....	224
People-Oriented - 1 .....	225
People-Oriented - 2.....	226
Perseverant - 1 .....	227
Perseverant - 2.....	228
Persistence.....	229
Persistent.....	230
Personable.....	231
Persuasive.....	232
Physically Demonstrative .....	233
Physically Enduring.....	234
Physically Grounded .....	235
Playful.....	236
Practical .....	237
Practical and Efficient.....	238
Practical Learner.....	239
Pragmatic - 1 .....	240
Pragmatic - 2.....	241
Pragmatic - 3.....	242



.....

Precision-Focused.....	243
Private.....	244
Proactive - 1 .....	245
Proactive - 2 .....	246
Protective .....	247
Quick Learner .....	248
Quick Mental Reactions.....	249
Quick Thinker .....	250
Reflective - 1 .....	251
Reflective - 2 .....	252
Reserved - 1.....	253
Reserved - 2.....	254
Reserved - 3.....	255
Resilient - 1 .....	256
Resilient - 2.....	257
Resolute - 1 .....	258
Resolute - 2.....	259
Resolute in Conviction.....	260
Respect-Commanding.....	261
Restless Thinker .....	262
Results-Oriented .....	263
Rigorous Adherence .....	264

Risk-Taker.....	265
Romantic .....	266
Sceptical - 1.....	267
Sceptical - 2.....	268
Selective in Intimacy .....	269
Self-Assured.....	270
Self-Conscious.....	271
Self-Critical - 1 .....	272
Self-Critical - 2.....	273
Self-Demanding .....	274
Self-Determined.....	275
Self-Directed - 1 .....	276
Self-Directed - 2.....	277
Self-Focused .....	278
Self-Questioning .....	279
Self-Reliant.....	280
Sensitive to Criticism - 1 .....	281
Sensitive to Criticism - 2 .....	282
Sensitive to Criticism – 3 .....	283
Sensuous .....	284
Sociable.....	285
Socially Aware .....	286

.....

Solid & Dependable.....	287
Solitude Seeker.....	288
Space-Valuing.....	289
Spontaneous.....	290
Steadfast.....	291
Strategic Thinker.....	292
Strong Memory.....	293
Strong Self-Will.....	294
Stubborn.....	295
Support-Seeking.....	296
Supportive.....	297
Suspicious.....	298
Sympathetic.....	299
Systematic - 1.....	300
Systematic - 2.....	301
Systematic Learner.....	302
Task-Oriented.....	303
Task-Specific Expertise.....	304
Tenacious - 1.....	305
Tenacious - 2.....	306
Thoughtful.....	307
Thrifty.....	308

Contents

---

Tolerant..... 309

Trouble Relaxing ..... 310

Unconventional Outlook ..... 311

Unconventional Thinker ..... 312

Vigilant ..... 313

Visionary..... 314

Weathered by Grief ..... 315

**PART 3**

Decode the Art of Face Reading ..... 319

# A Special Acknowledgment

To Nishit Kumar Seth,

In the heart of Varanasi, where spirituality breathes through the Ganges and history echoes in the streets, our paths crossed, transforming my journey as an author and a teacher. This dedication in 'Face Reading Dictionary' is a tribute to you, Nishit, a student whose spirit mirrors the city's timeless essence.

Our connection, born in the digital realm through lessons in graphology and body language, took an unexpected turn in the sacred city of Varanasi. Though initially, our interactions were confined to screens and keyboards, destiny had its plans. My visit to Varanasi, intended for the inception of this book, serendipitously became the backdrop of our first meeting.

Nishit, in your twenties, you embody a blend of youthful enthusiasm and age-old wisdom, much like Varanasi itself. Your guidance through the city's sacred landmarks, your assistance in a spiritual ceremony that was destined to be, and your constant companionship during my nine-day stay, were acts of kindness that transcended the usual teacher-student dynamics.

Our shared moments by the Ganges, where you stood by me, offering courage and moral support for a holy dip, are

imprinted in my heart. Your large-heartedness in making time for me, your eagerness to share the wonders of your city, and your genuine care have left an indelible mark.

Therefore, it is with immense gratitude and affection that I dedicate 'Face Reading Dictionary' to you, Nishit Kumar Seth. You are not just a student, but a significant part of my journey, a kindred spirit who enriched my experience in the land of spirituality. This book is as much yours as it is mine.

With Heartfelt Thanks,

Varun L. Rupani

# Preface

Welcome to Face Reading Dictionary, a journey into the fascinating world of understanding personality through the art of face reading. This book is the culmination of years of research, observation, and practice, distilled into an accessible format for anyone interested in the subtle art of reading faces.

Face reading, or physiognomy, is an ancient practice that offers insights into an individual's character and personality traits through the analysis of their facial features. It is a practice that has fascinated scholars, philosophers, and scientists for centuries, evolving over time to incorporate both traditional wisdom and contemporary understanding.

Whether you are a psychologist, a student of human behaviour, or simply curious about what your own face might reveal, this dictionary will serve as a comprehensive guide to exploring the nuances of personality as reflected in the features of the face.

'Face Reading Dictionary' is organized in an easy-to-navigate format, presenting over 250 personality traits, and correlating them with specific facial features. This methodical approach not only makes the art of face reading more accessible but also provides a practical tool for readers to apply in their everyday lives.

The essence of face reading goes beyond mere physical appearances; it is a profound journey into the human psyche, offering a mirror to our innermost traits and tendencies. My goal is to empower you with the knowledge to understand not just others, but also yourself, in a deeper, more compassionate way.

As you turn the pages of this book, I encourage you to keep an open mind. Face reading is a nuanced practice that requires patience, practice, and a discerning eye. Remember, the face is not a static entity; it is dynamic, reflecting the complexities and contradictions that make up the human experience.

Thank you for embarking on this journey with me. It is my sincere hope that 'Face Reading Dictionary' enriches your understanding of human nature and adds a meaningful dimension to your exploration of personality analysis.

Let us begin this intriguing exploration together, with curiosity and an eagerness to learn.

Varun L. Rupani



---

---

# PART 1

---

---



# The Legacy of Physiognomy

The art of physiognomy, originating from the Greek words ‘physis’ (nature) and ‘gnomon’ (judge), is the practice of understanding personality from physical appearance, particularly the face. This chapter traces the historical evolution of physiognomy, linking it to the profound wisdom encapsulated in an old Cherokee parable about two internal wolves.

## **The Cherokee Parable: A Reflection in Physiognomy**

An old Cherokee chief once shared a life lesson with his grandson. He said, “A fight is going on inside me. It is a terrible fight between two wolves. One is evil – he is anger, envy, sorrow, regret, greed, arrogance, self-pity, guilt, resentment, inferiority, lies, false pride, superiority, self-doubt, and ego. The other is good – he is joy, peace, love, hope, serenity, humility, kindness, benevolence, empathy, generosity, truth, compassion, and faith. This same fight is going on inside you, and inside every other person too.” The grandson pondered for a moment and then asked, “Which wolf will win?” The chief simply replied, “The one you feed.”

Physiognomy resonates with this parable, suggesting that the dominant traits within us, akin to the wolf we feed, manifest in our facial expressions and features. While

physiognomy does not predict behaviour, it provides a glimpse into which ‘wolf’ – or traits – are prevailing in a person.

Physiognomy, the ancient art of reading faces, has a rich history that dates back over 2700 years. The Chinese were pioneers in this field, developing ‘Mian Xiang’ to interpret health, personality, and destiny from one’s facial features. This practice was not unique to China; ancient Egyptian texts also show their engagement with physiognomy. In the realm of Greek philosophy, Aristotle and Pythagoras made significant contributions. Aristotle explored the connection between facial features and character, while Pythagoras looked at how the environment might affect a person’s personality. The Arab world too had its version, known as ‘Firasa’, which focused on uncovering hidden traits, a concept that even found echoes in the Quran.

Moving into the Renaissance period, Leonardo da Vinci, despite his scepticism about its scientific underpinnings, acknowledged that facial expressions could indeed reflect aspects of a person’s personality. Today, physiognomy is seen as more than just a superstitious practice. It is viewed as a blend of empirical observation and intuitive interpretation, offering a unique lens through which to understand human nature. In modern times, physiognomy is used as a tool for gaining personal insight, aimed at enhancing empathy and self-awareness, rather than as a means for making definitive predictions. This evolution shows the enduring relevance of face reading in understanding the complexities of human behaviour.

In Face Reading Dictionary, the evolution of physiognomy from ancient times to the present offers a rich background for

understanding its principles. This chapter not only enriches the reader's knowledge but also invites them to explore face reading as a journey of self-discovery and understanding others, mirroring the wisdom of feeding the right 'wolf' within us.



# Limits of Face Reading

Face reading, a fascinating practice tracing back to ancient civilizations, offers insights into an individual's personality and character based on their facial features. While it provides valuable information, it is crucial to acknowledge its limitations. This chapter delves into the intricacies of face reading, highlighting why it should be approached with caution and seen as part of a larger puzzle rather than a definitive guide to an individual's character.

## Understanding the Dynamic Nature of Personality

**Inherent Traits vs. Situational Behaviour:** Face reading primarily identifies inherent traits, but these may not always align with a person's current behaviour. For example, a naturally generous person might appear thrifty during financial hardships. This discrepancy arises because human behaviour dynamically responds to circumstances.

**The Influence of External Factors:** External factors like love, pain, and societal pressures can mask or alter the expression of innate traits. An individual's behaviour under stress or in different social contexts might not accurately reflect their core personality.

## The Interplay of Contradictory Traits

**Balancing Opposite Traits:** People often possess contradictory traits. For instance, someone can be both introverted and extroverted, exhibiting these traits in different scenarios. Face reading might identify one trait, but it's essential to recognize the possibility of its opposite existing in balance.

**Neutralization of Traits:** In some cases, opposing traits can neutralize each other, making it challenging to discern any dominant characteristic from facial features alone.

**Context-Dependent Trait Expression:** An individual may exhibit one trait in a particular situation and its opposite in another. This variability underscores the importance of considering context in face reading.

## The Complexity of Face Reading

**A Single Feature Is Not Conclusive:** It's vital not to jump to conclusions based on a single facial feature. Human personality is complex, and face reading should involve a holistic analysis of multiple features.

**The Role of Experience and Skill:** Accurate face reading requires experience and skill. Misinterpretations are common among novices, emphasizing the need for a deeper understanding of the practice.

## The Importance of Long-Term Observation

**Short-Term vs. Long-Term Traits:** In the short term, people are adept at masking their true traits, making face reading less reliable. Long-term observation is crucial for a more accurate understanding of a person's character.



**Integration with Other Personality Indicators:** Face reading should be used in conjunction with other personality assessment methods. Relying solely on face reading for major life decisions is not advisable.

## **Conclusion**

Face reading is a valuable tool in understanding human personality, but it should be used with an awareness of its limitations. Recognizing the dynamic and complex nature of human behaviour, the influence of external factors, and the need for long-term observation can enrich our understanding and application of face reading. This approach ensures a more nuanced and comprehensive view of an individual's character, enhancing the effectiveness of this ancient practice.

With this chapter, we conclude the explanatory section of our exploration into face reading. In the next segment of the book, we embark on a detailed journey through the Face Reading Dictionary. This comprehensive list of personality traits, arranged in A-to-Z order, will guide you in correlating specific facial features with corresponding personality traits. However, remember that face reading is not a tool for immediate conclusions. It requires patience, observation, and the collection of multiple supporting traits to strengthen your assessments. As we move forward, keep in mind the importance of a holistic and observant approach in the art of face reading.



---

---

# PART 2

---

---



## Accountable



Individuals whose eyes turn downward from the outer corners are quick to recognize their own mistakes and are willing to take responsibility for correcting them. In addition to being accountable themselves, they also expect others to own up to their errors. They value honesty and responsibility in themselves and in the people around them.

## Acknowledgement-Seeking



Individuals with a scooped nose (concave-shaped when viewed from the side) frequently exhibit a desire for recognition and appreciation. Simple gestures of acknowledgment, such as a 'thank you', hold significant importance to them, greatly influencing their job satisfaction and motivation. This need for validation often plays a key role in how they engage and perform in their work environment.

## Acquisitive



Individuals with a big bulbous nose tip (large bulb on the end of the nose) focus on acquiring necessary resources or assets. They are often driven to gather what is needed to support their goals and lifestyle, ensuring they have sufficient means.

## Action-Oriented



Individuals with a straight chin, noticeable when viewed from the front, are typically very action-oriented, especially when it comes to their ideas and beliefs. They are proactive in putting their thoughts into action, often driven by a strong sense of purpose.



## Adaptable



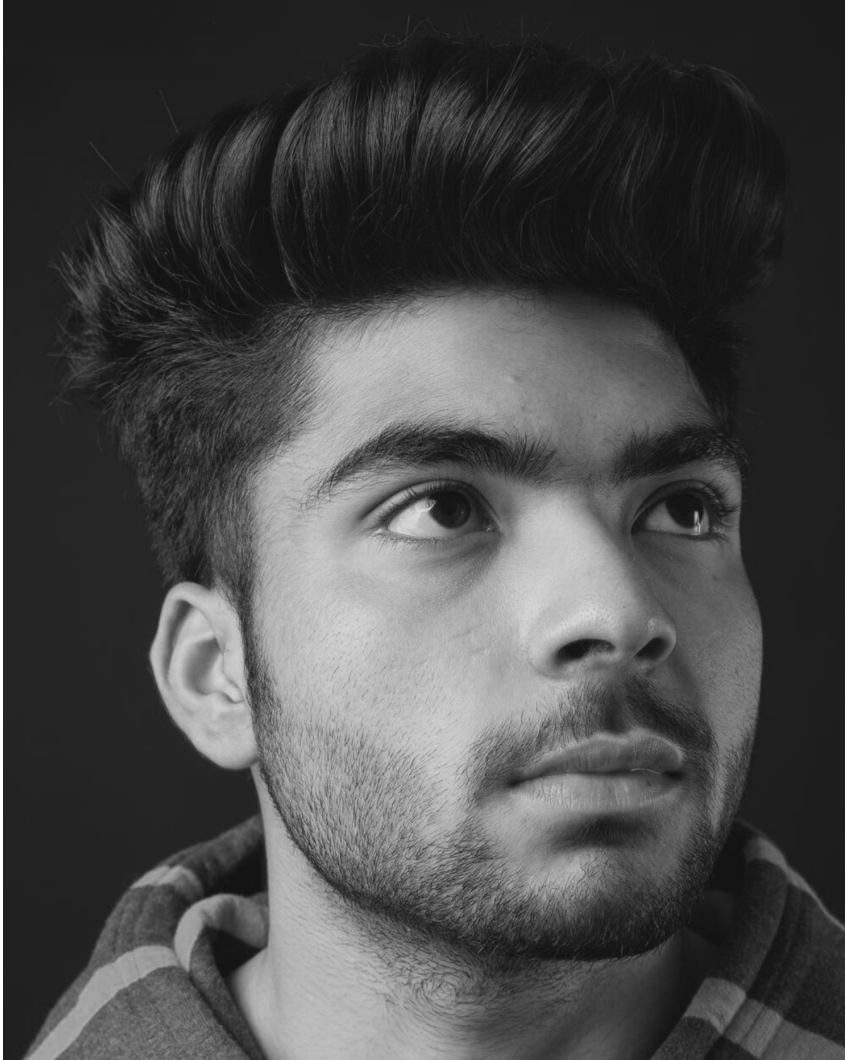
Individuals with a flat eyebrow bone, where a pronounced eyebrow bone is absent, possess a notable ability to adjust swiftly and effectively to new circumstances. They display flexibility in their thinking and methods, capable of pivoting as situations demand. This adaptability is a key characteristic, enabling them to navigate changes and challenges with ease.

## Adventurous - 1



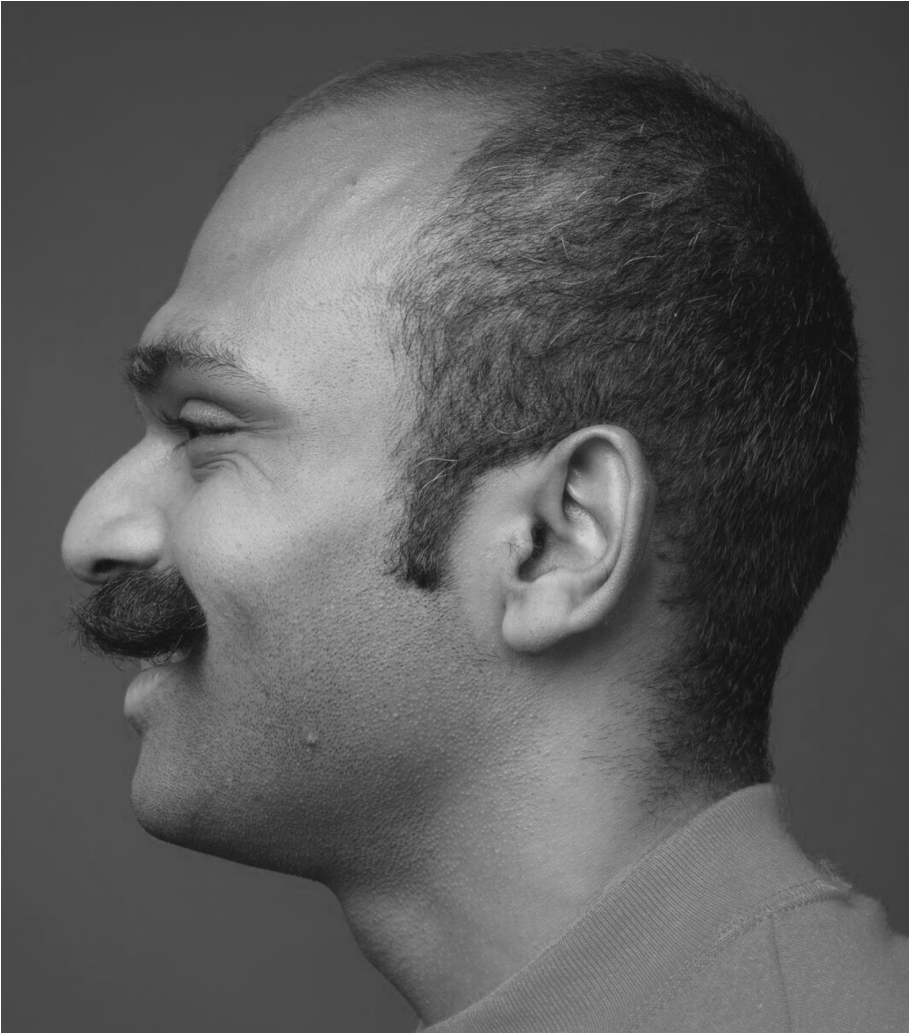
Individuals with a cleft in their chin are typically adventurous. They enjoy exploring new experiences, taking risks, and engaging in activities that offer a sense of excitement and discovery.

## Adventurous - 2



Individuals with large nostrils often display an adventurous spirit. They have a bold approach to life, characterized by a willingness to take risks and explore new opportunities. Their inclination to 'throw caution to the wind' signifies a fearless and exploratory nature.

## Aesthetically Inclined



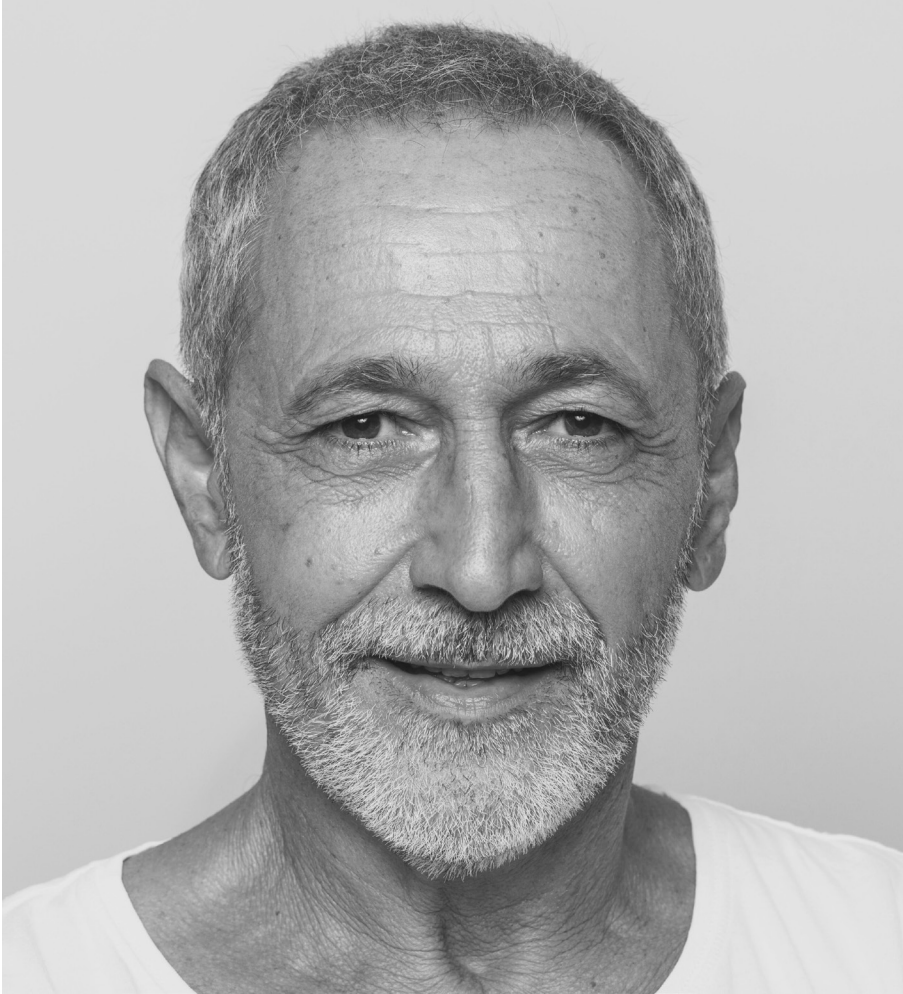
Individuals with an arched nose, which curves outward when viewed from the side, have an appreciation for beauty and elegance. They are often drawn to aesthetically pleasing environments and objects, valuing style and design.

# Aggressive



Individuals with a large, well-defined chin may exhibit aggressive traits, particularly in pursuing their goals. This aggression is not necessarily negative; it often translates to being proactive and forceful in achieving objectives.

## Analytical - 1



People with deep-set eyes tend to be analytical thinkers. They critically evaluate information, situations, and ideas, dissecting and examining them thoroughly before forming opinions.

## Analytical - 2



Individuals with straight eyebrows are often analytical. They thoroughly assess information and data before arriving at conclusions, displaying a keen ability for critical analysis.

## Analytical - 3



Individuals with very thin lips often have an analytical mindset. They might overthink or deeply analyse situations, sometimes leading them to live more in their heads than in the emotional realm.



## Analytical - 4



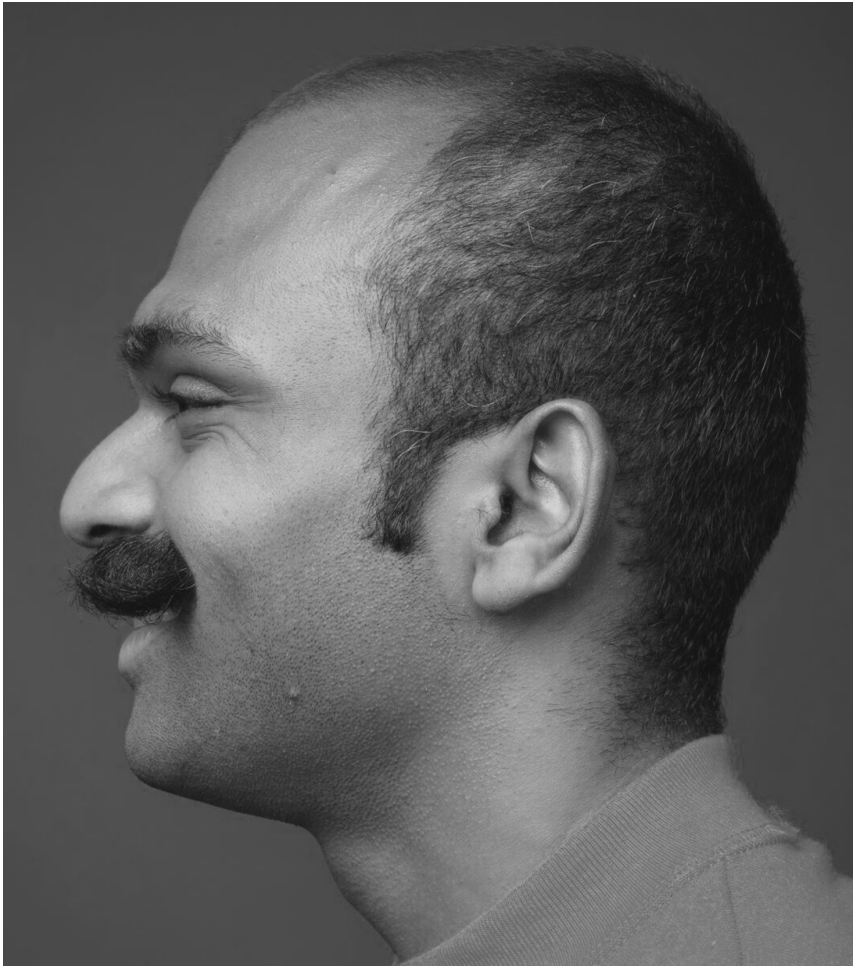
Individuals with crooked bottom teeth often have an analytical approach. They are adept at seeing various aspects of an issue, examining it from different angles and perspectives, which aids them in understanding complex situations deeply.

## Appreciation for Proven Methods



Individuals with a backward-angled forehead, when viewed from the side profile, tend to appreciate tried-and-true methods. They gravitate towards reliable and efficient processes, favouring well-established techniques over unproven or novel strategies. This characteristic suggests a practical, cautious mindset in tackling challenges and solving problems.

## Appreciation-Seeking



Individuals with an arched nose, which curves outward when viewed from the side, place high value on recognition and appreciation for their efforts. They particularly appreciate it when their innovative and efficient ideas are implemented and acknowledged by others. This need for recognition is an important motivator in their pursuit of excellence and innovation.

## Articulate



Individuals with a fuller lower lip, where the lower lip is noticeably larger than the upper lip, tend to be articulate, especially when it comes to explaining and discussing external facts and figures. They can clearly and effectively communicate complex information.

## Assertive - 1



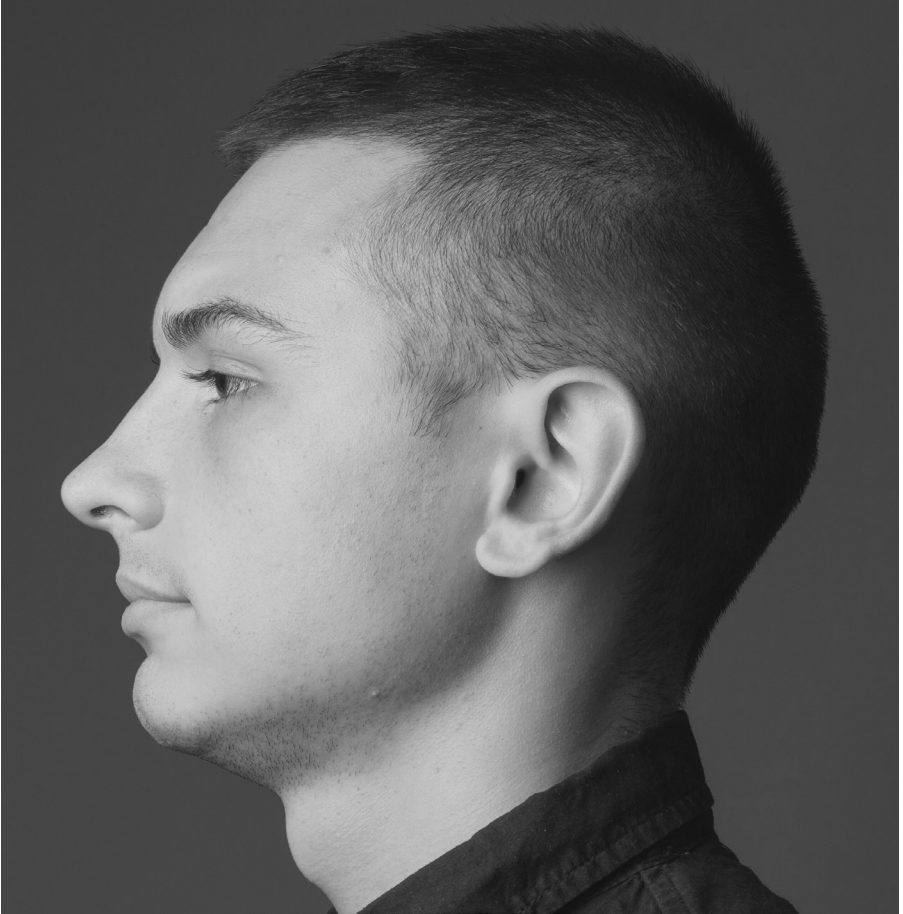
Individuals with a large, well-defined chin often exhibit assertiveness. They confidently express their opinions and stand up for themselves, demonstrating a clear and self-assured approach in their interactions. This trait of assertiveness is a prominent aspect of their communication style, reflecting their confidence and determination.

## Assertive - 2



Individuals with a chin that protrudes when viewed from a side profile typically exhibit a high level of assertiveness. They confidently voice their opinions and have a tendency to dominate conversations. This often leads to them getting the last word in discussions or arguments, reflecting their strong and assertive communication style.

## Attention to Detail



Individuals with a backward-angled forehead, noticeable in a side profile, often exhibit a high level of attention to detail. Their ability to remember and precisely execute tasks suggests meticulousness in their approach. People with this facial feature tend to focus on the finer points in their work, ensuring accuracy and consistency. This careful and thorough approach often results in high-quality outcomes in their various endeavours.

## Attentive Listener



Individuals with large ears are often excellent listeners. Their ability to give full attention to others when they speak makes them valued companions and confidants. They are adept at hearing and understanding others' points of view, making others feel heard and appreciated.



## Attentiveness



Individuals with closely-spaced eyes are often notably mindful and attentive. They possess a keen eye for detail, outshining those with more widely-spaced eyes in their observation skills. This trait allows them to notice subtleties and nuances that others might overlook.

## Authoritative - 1



Individuals with angled eyebrows often show a natural sense of authority. These people are often perceived as authoritative and commanding, and they are likely to be respected by others.

## Authoritative - 2



Individuals with jowls (lower cheek area that looks like a double chin) often exude an aura of authority. This physical feature is commonly associated with a commanding presence, which can inspire respect and recognition from others, especially in leadership contexts.

## Authority-Seeking



Individuals with a large nose show a preference for positions of authority and control. They are most satisfied in roles where they can exert influence and direct outcomes, such as in managerial or supervisory capacities.