

podSTUDIO.







## INTRODUCTION

- ABOUT US 5
- SERVICES 6

## PROJECTS

- Sandpits Road 8
- 2 London Road 12
- Wolverhampton Residential Complex 14
- Iranmall West Expansion 16
- Iranmall Multifunctional Complex 19
- Iranmall Access Road 24
- Tat Tower 26
- Rotana Hotel 28
- **Four Junction Design In Basra, Iraq** ??
- **Bahirdar Suspension Bridge** ??
- **Turkey Bridge Design** ??







## Our Vision

*To succeed in business through our professionalism, collaborative spirit, emphasis on client service, and passion for design excellence.*

*We believe that each project has a unique set of challenges and opportunities, and these factors guide our design processes.*

*By embracing the singularity of each project, we open ourselves to opportunities that not only result in new and creative solutions but also fully address the specific requirements of each project.*

*To provide service globally and become one of the most respected consulting engineering firms.*



## Our Mission

*Our mission is rooted in a strong tradition of concern for humanistic values and the aim to find appropriate roles for architecture and urbanism in our society.*

*Provide technically excellent and innovative solutions, for adding value for all stakeholders, and operate globally as professional consulting engineers.*

*With highly focus on our goals to get the best result for the company's business objectives. The main objective is based on sustainability. We can do more than just endure or adapt to climate change, we can tackle it and create a better, more just society in the process.*



## Our Values

ABOUT US

*Our values reflect who we are and what we stand for as a company.*

- *We do care about our customers and developing relationships that make a positive difference in their lives*
- *We provide outstanding services that deliver premium value to our customers*
- *We work together, among disciplines to find the best answer for our customer's needs*
- *We value our team, encourage their development and reward their performance*
- *We exhibit a strong will to win in the marketplace and in every aspect of our business*
- *We are personally accountable for delivering on our commitments*



● LONDON, UNITED KINGDOM

● TEHRAN, IRAN

● DUBAI, UNITED ARAB EMIRATES



SERVICES

## ARCHITECTURE +INTERIOR DESIGN

**PodStudio** provides its clients with innovative design solutions that are both functional and inspiring. This is demonstrated by the successful delivery of a range of high profile projects within the commercial workplace, hospitality, mixed-use, residential and commercial sectors.

For us, architecture is more than just the delivery of a plain product. We consider the posterity of the product, working through a process with great sensitivity taking an approach which is evolving in the development of the creative process.



## STRUCTURE

**PodStudio** offers a broad range of structural engineering design services delivering thoughtful, well-engineered and cost-effective solutions to meet the expectations of our clients.

Our skilled and experienced design engineers utilize state of the art 3D modeling software for design analysis to test structural solutions in a virtual world and push the boundaries of efficiency. The structural models also help our engineers to see how complex geometry and components of a design work together.

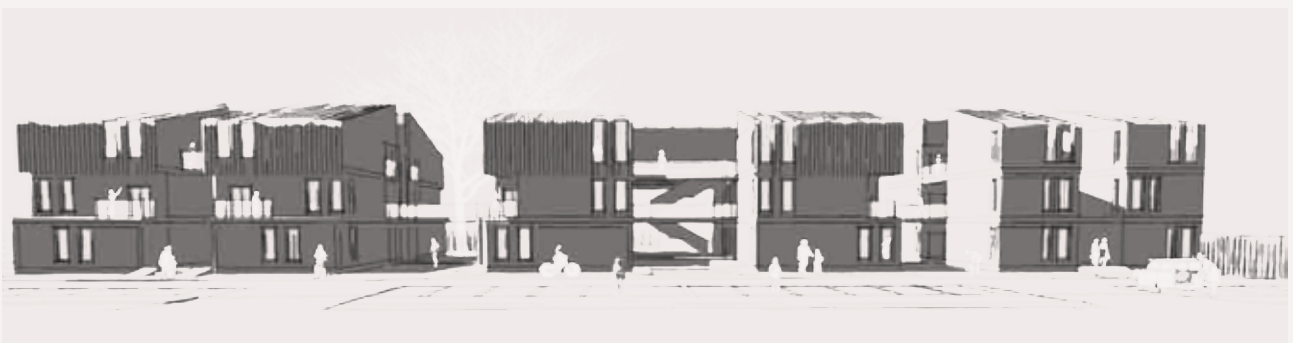
All appropriate building materials are considered through the early stages of a design and take on board the aesthetic, sustainable and economic performance requirements of the project.



## URBAN DESIGN

Through our philosophy of research through design practice, **Podstudio** will bring contemporary urban theories and practice into a relationship with the skills, thinking and heritage of urban design in a relevant context.

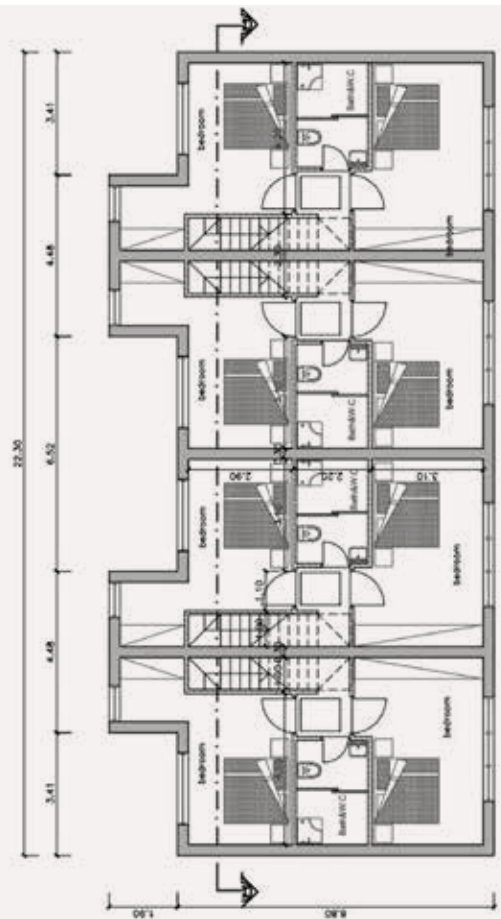
In our commitment to the ideals of sincere and radical social and spatial transformation, we sincerely believe that the act of city making is a political exercise and acknowledge the responsibility we share through making the space we live in with equitable, productive and sustainable characteristics.





# SANDPITS LANE COVENTRY

SANDPITS LANE PHOTOREALISTIC 3D IMAGE - 2021



2021 - 2022

Walking distance to the city center of Coventry, the proposed development of Sandpits Lane comprises four detached luxury houses and four town houses.

As the lead designer of the project, our responsibilities were as followed:

- Architectural concept package.
- Layout land scape design.
- Cross check multi-discipline drawings.
- Weekly client reports and progress presentation



SANDPITS LANE PHOTOREALISTIC 3D IMAGE - 2021





An aerial, black and white photograph of a residential street. The street is lined with terraced houses. In the foreground, a row of houses is visible, with a larger, more prominent building on the right side. The street has a road surface with lane markings and a few cars parked or driving. Trees and greenery are interspersed between the buildings. The overall scene is a typical urban residential area.

# 2 LONDON ROAD

2019 - 2021

2 London Road project was a new development which also acted as an extension to an existing building. It contained 19 units. As the design manager, we were in charge of remodelling and refurbishment of existing building, architectural concept drawings, planning permission submission, as well as 3D modelling and rendering.



2 LONDON ROAD PHOTOREALISTIC 3D IMAGE - SITE PLAN - 2020



# 2 LONDON ROAD

2 LONDON ROAD PHOTOREALISTIC 3D IMAGE - 2019





2 LONDON ROAD PHOTOREALISTIC 3D IMAGE - 2019

WOLVERHAMPTON RESIDENTIAL COMPLEX  
PHOTOREALISTIC 3D IMAGE - 2018

# WOLVERHAMPTON

## RESIDENTIAL COMPLEX

BLOCK C

B

BLOCK A



2018 - 2019

Wolverhampton project was a housing scheme covering 64 units divided into 3 blocks covering 50,000 sqm.

The blocks were designed symmetrically, with a centre courtyard for each block.

As a team leader and coordinator, I was in charge of concept design package and planning and local authority submission.

PROJECTS

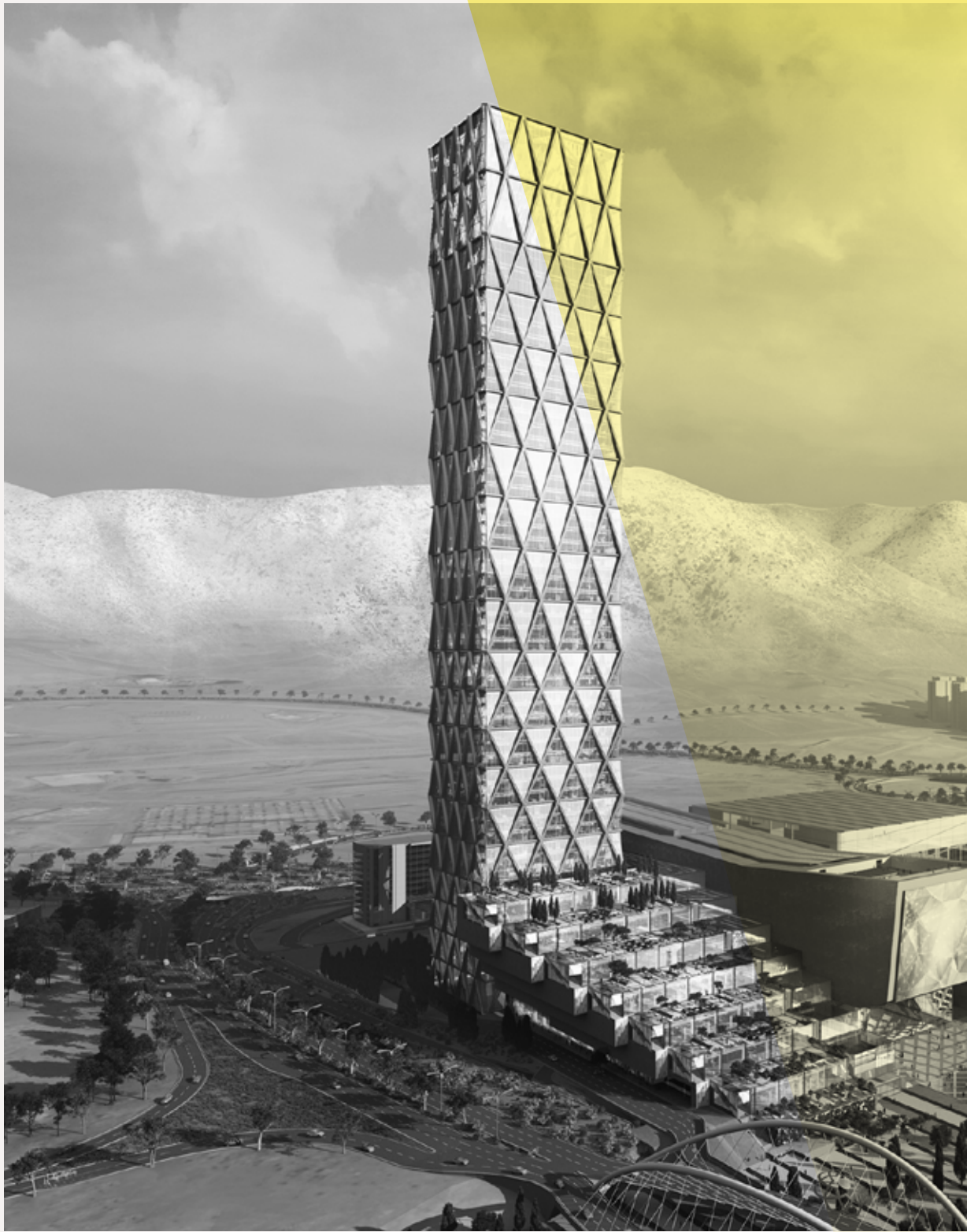




*WOLVERHAMPTON RESIDENTIAL COMPLEX 3D VISUALISATION - 2018*



# IRANMALL WEST EXPANSION



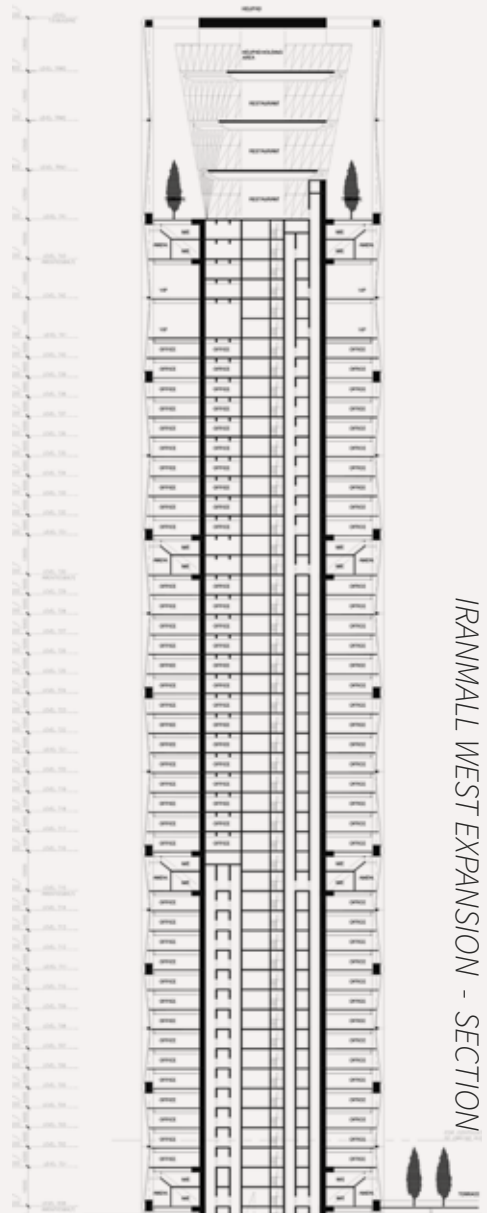
2016 - 2018

“Iranmall West Expansion” was a financial tower with 165m height and a GFA of 800,000 sqm, added to Iranmall multifunctional complex.

The project was designed in partnership with “NORR Architects”.



IRANMALL WEST EXPANSION PHOTOREALISTIC 3D IMAGE - AERIAL VIEW - 2016

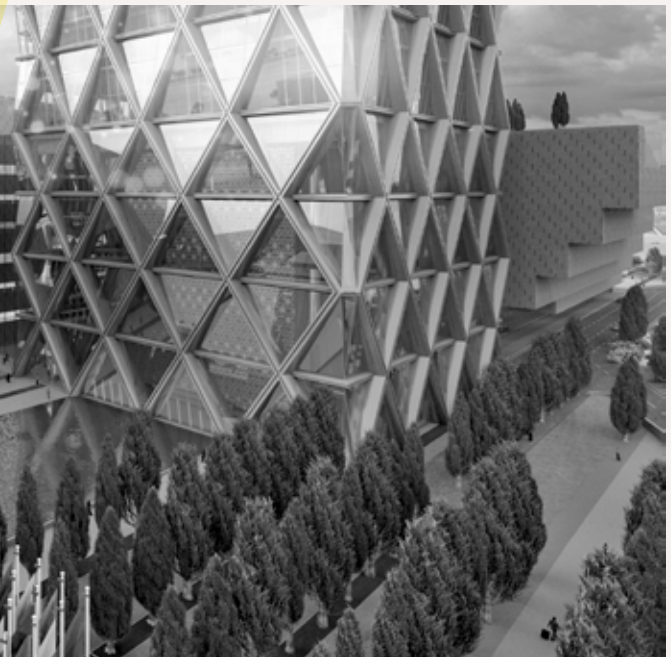
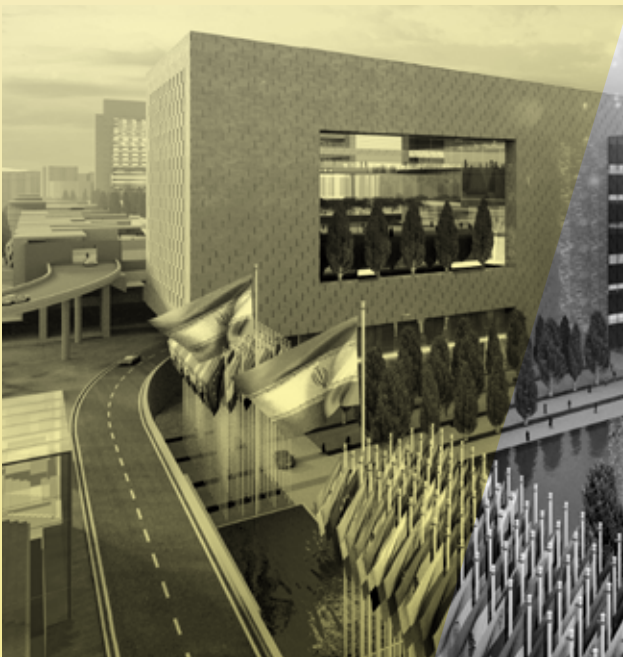
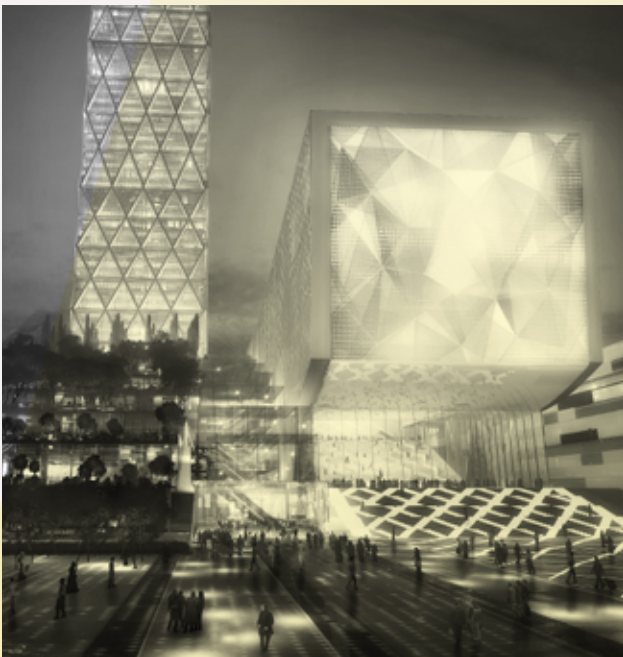
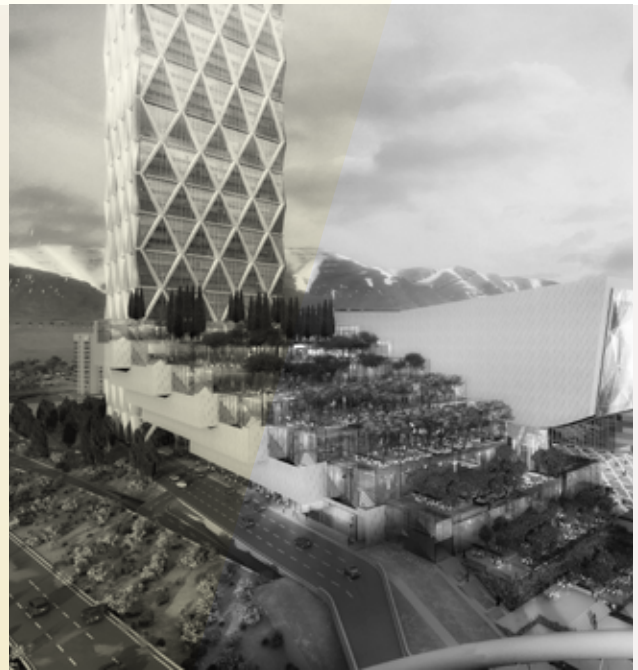


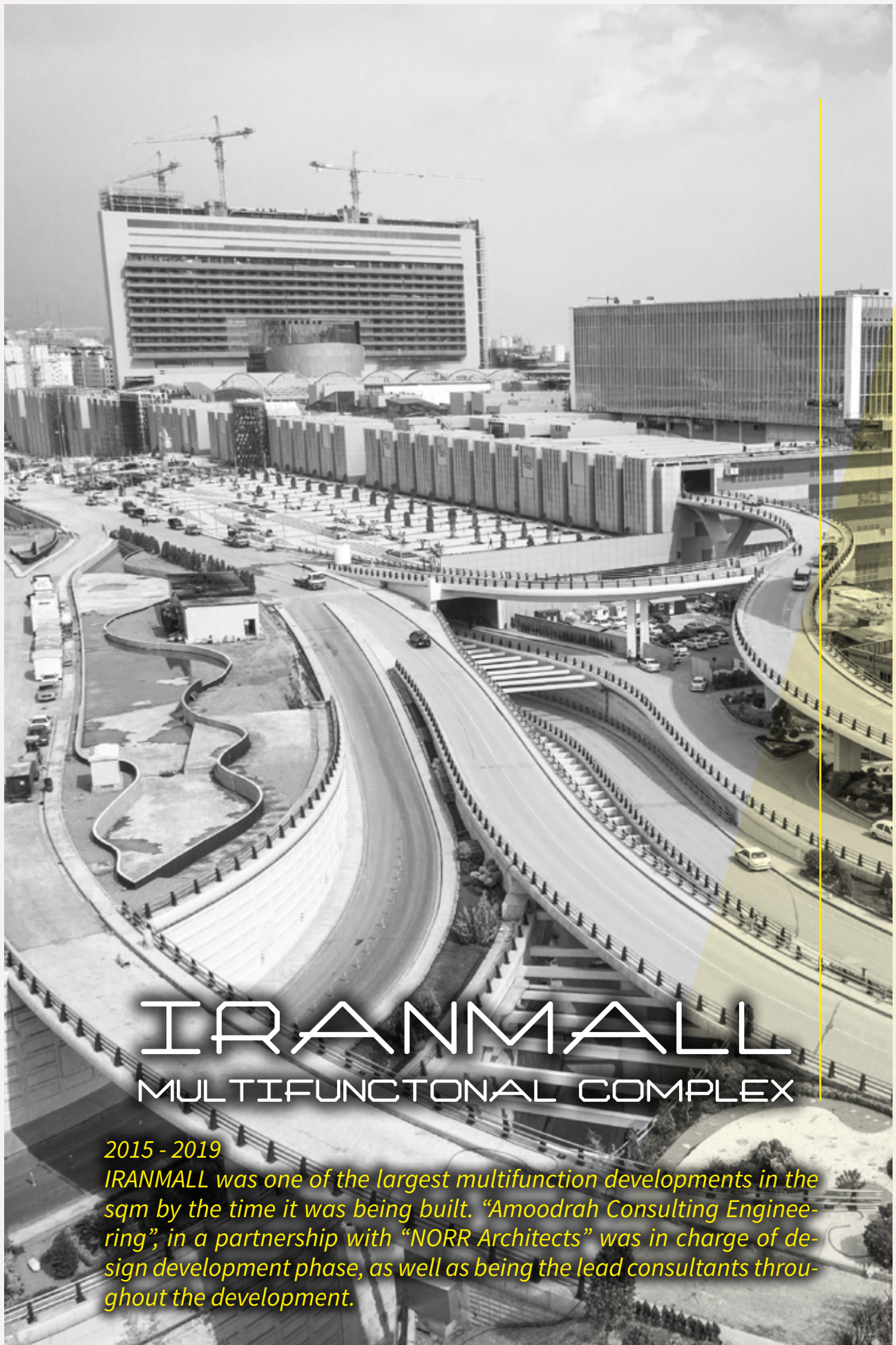
IRANMALL WEST EXPANSION - SECTION

As a project lead engineer (design phase) and a multi-discipline coordinator (construction phase), we were responsible for the tasks listed below:

- Cross Checking Multi-Discipline Drawings
- Architectural Drafting (AutoCad and Revit)
- BIM Drafting (Clash Detection)
- Weekly Site Visits
- Solving Onsite RFIs
- Organizing Monthly Workshops for Progress







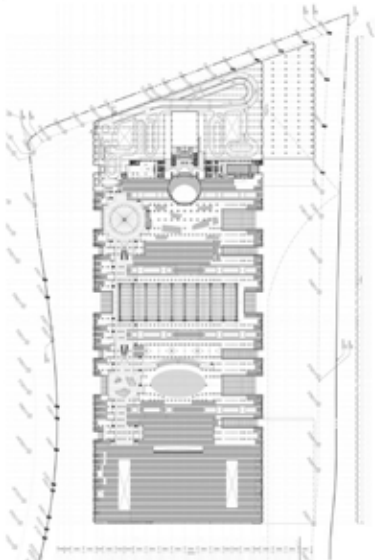
# IRANMALL

## MULTIFUNCTIONAL COMPLEX

**2015 - 2019**

*IRANMALL was one of the largest multifunction developments in the sqm by the time it was being built. "Amoodrah Consulting Engineering", in a partnership with "NORR Architects" was in charge of design development phase, as well as being the lead consultants throughout the development.*





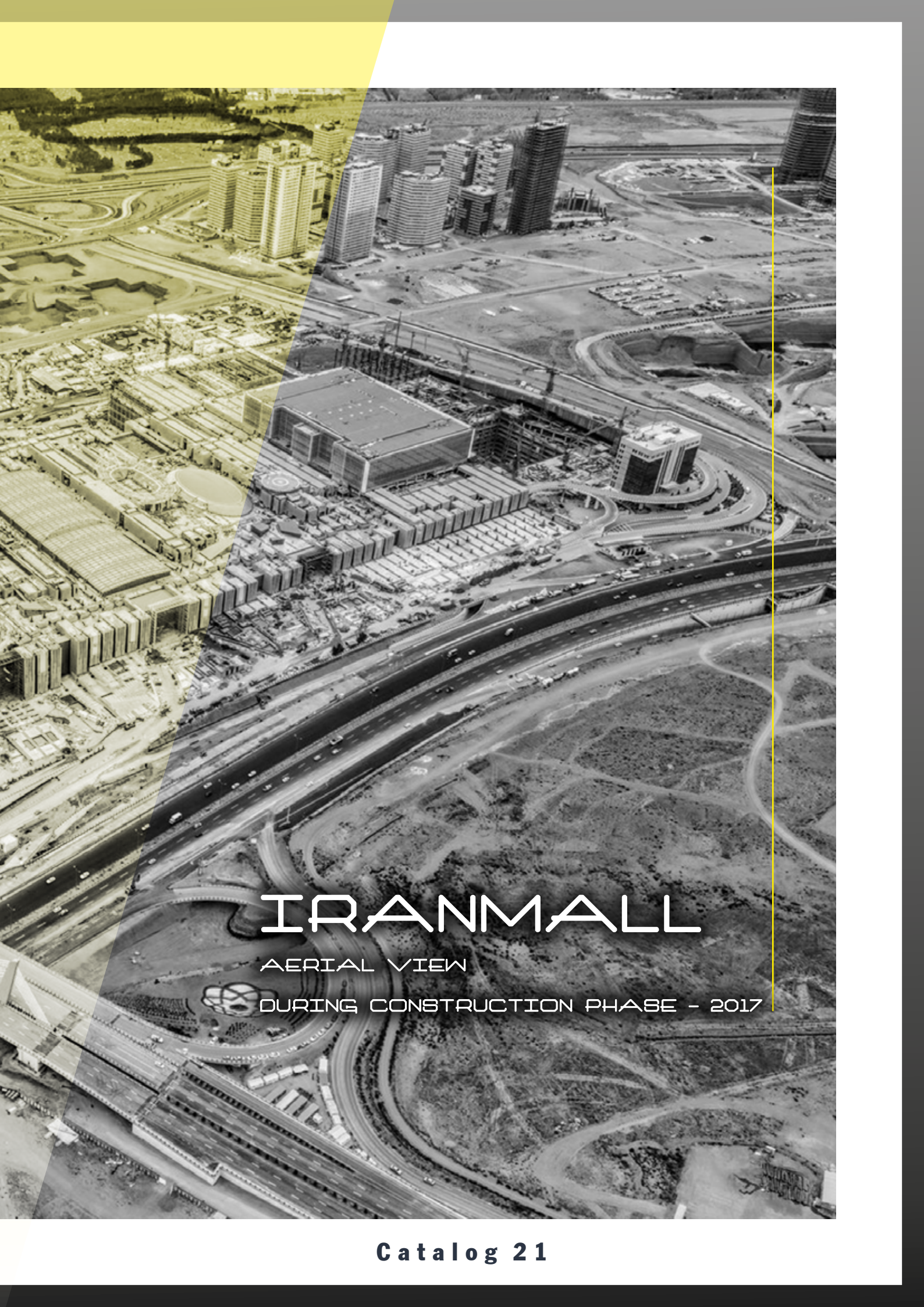
As an architectural technologist in “Amoodrah Consulting Engineering” we was responsible for the followings:

- 3D Modelling
- Architectural Drafting (AutoCad and Revit)
- BIM Drafting (AutoCad and Revit)
- Daily Site Visits
- Research on sub-contracts and out-sourcing

Various sections of the development.







# IRANMALL

AERIAL VIEW

DURING CONSTRUCTION PHASE - 2017



# IRANMALL

## MULTIFUNCTIONAL COMPLEX

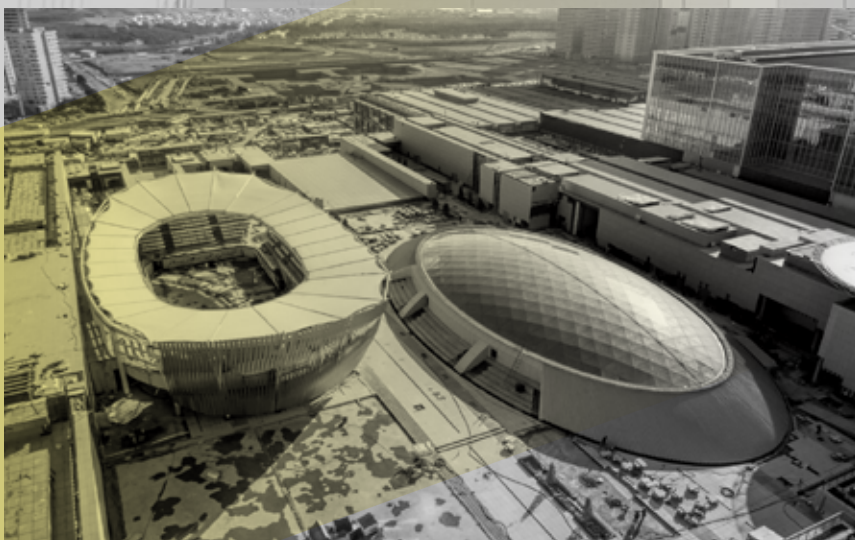
- Site and workshop supervision
- Client technical representative services

Location: Tehran, Iran

Building area: 1,350,000 m<sup>2</sup>

Status: Completed

### PROJECTS



IRANMALL CAR SHOWROOM - 2016

IRANMALL CAR SHOWROOM AERIAL VIEW - 2016



*IRANMALL HOTEL PHOTOREALISTIC 3D IMAGE - 2016*





# IRAN MALL

## ACCESS ROADS



Design and construction management of access roads and technical buildings.

Location: Tehran, Iran  
Length: 18.5 km

IRANMALL TABIAT BRIDGE PYLON DURING CONSTRUCTION- 2015



IRANMALL NORTH-EAST SPAGHETTI JUNCTION DURING CONSTRUCTION- 2015



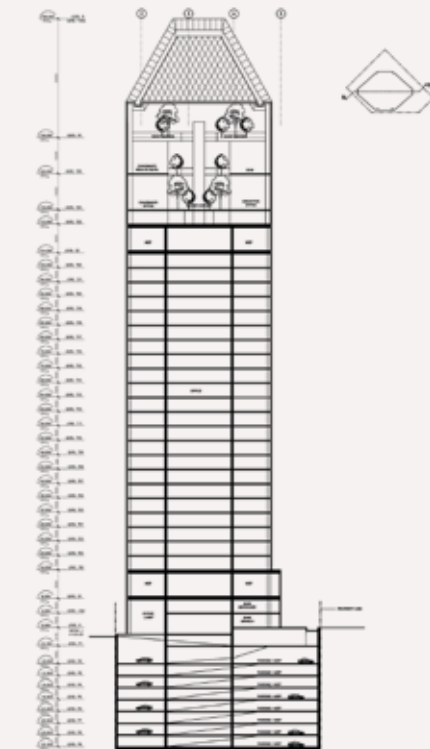
# TAT TOWER

## AYANDEH BANK HQ.

2013 - 2016

Tat Tower a 21 floor commercial and office building, Located in the center of Tehran, Iran. The initial concept of the tower was instigating the number 1 including the folding curtain walls on the façade. However, during schematic stage, Due to heavy earthquakes in the region the designer was forced to remove the folding pattern and utilize a simple straight glaze façade.

*TAT TOWER PHOTOREALISTIC 3D IMAGE - CONCEPT DESIGN - 2013*



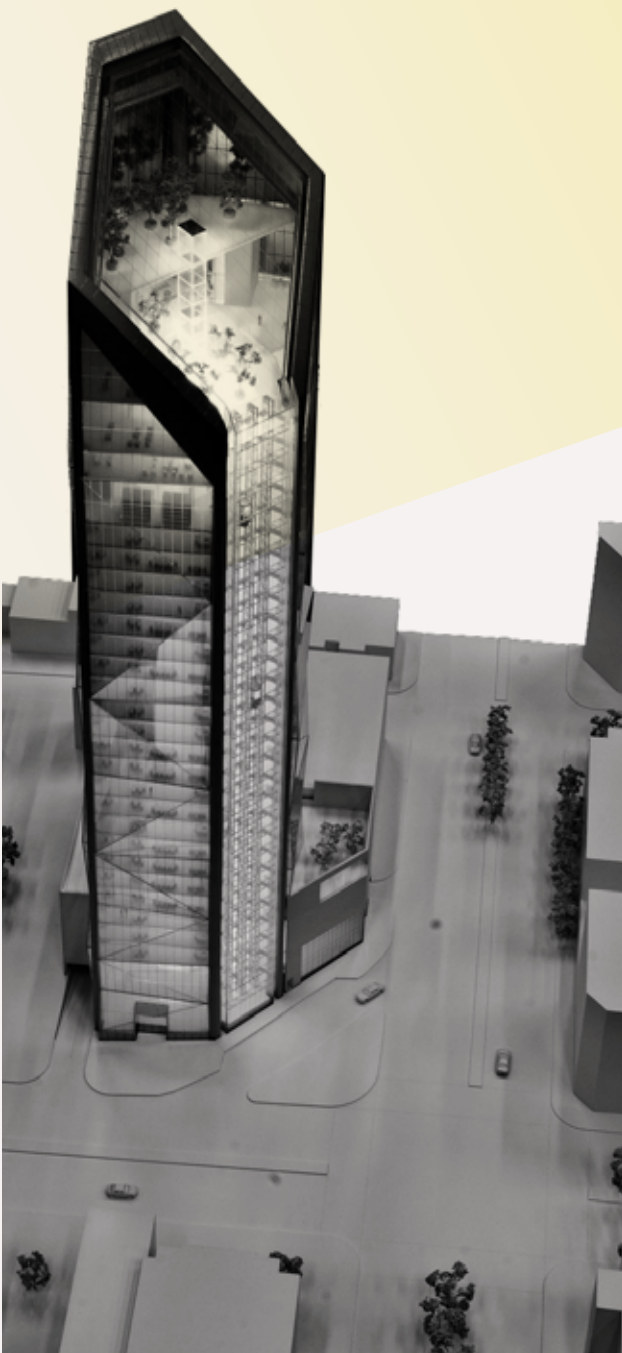
As our first high-rise experience, we was part of the design team, responsible for the followings:

- Schematic & detailed design
- Design Technician
- 3D Modelling
- AutoCAD Drafting
- Facade Design

*PHOTOREALISTIC 3D IMAGE - INTERIOR DESIGN*



*TAT TOWER CONCEPTUAL REPLICATING - CONCEPT DESIGN - 2013*



*TAT TOWER IMAGE - CONSTRUCTION - 2015*

# ROTANA HOTEL

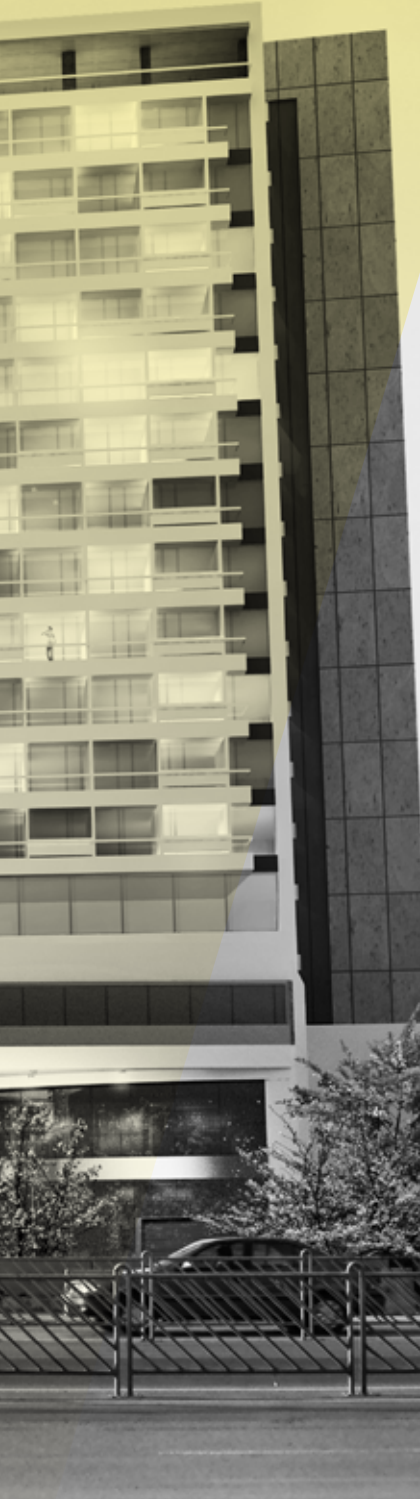
ROTANA HOTEL PHOTO-REALISTIC 3D IMAGE







ROOF GARDEN PHOTOREALISTIC 3D IMAGE



Architecture Design  
Structure Design  
Mechanical Design  
Electrical Design  
Consulting Services  
Site and Workshop Su-  
pervision  
Mashhad, Iran  
Building area: 73,000 m2



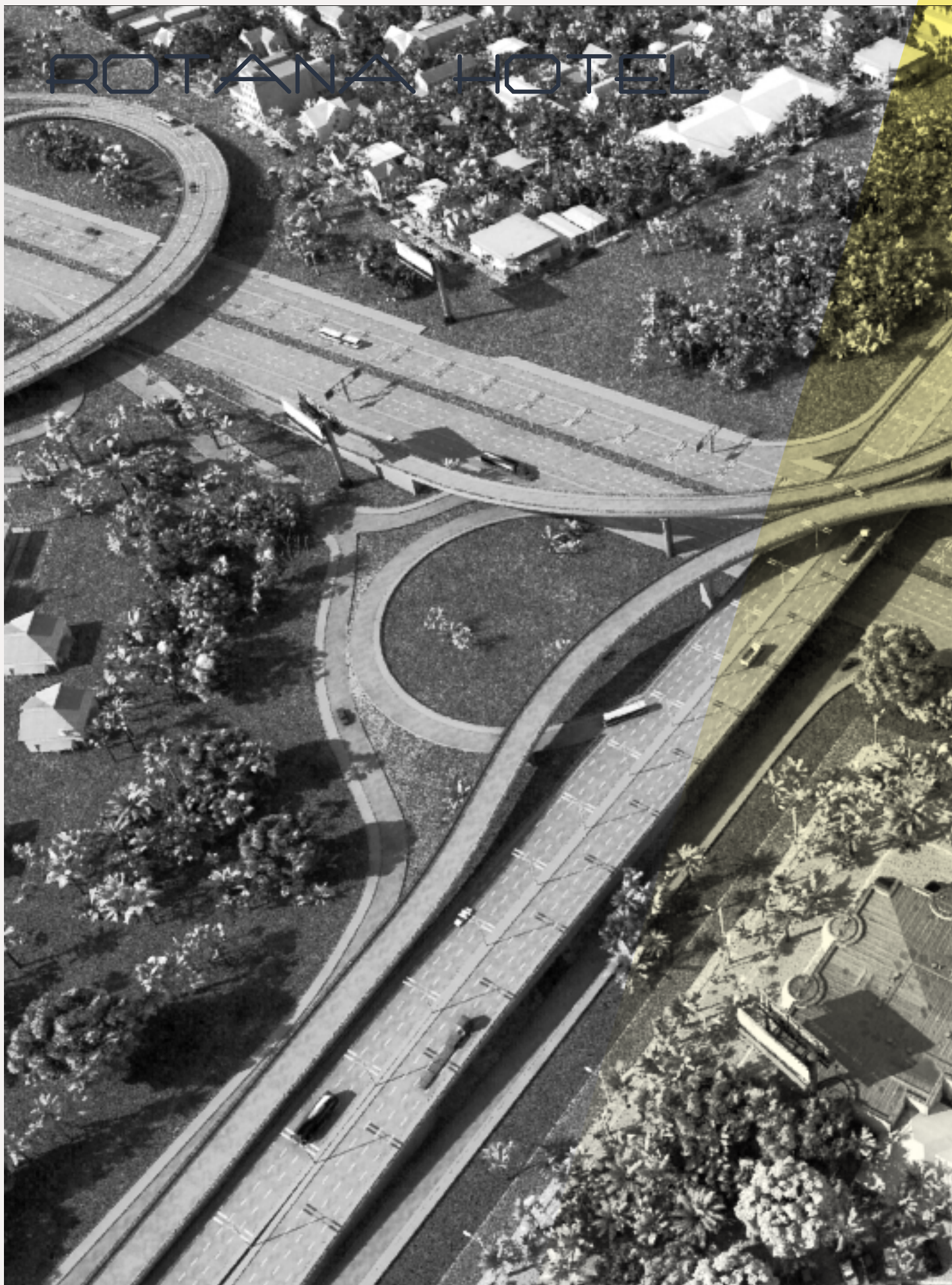




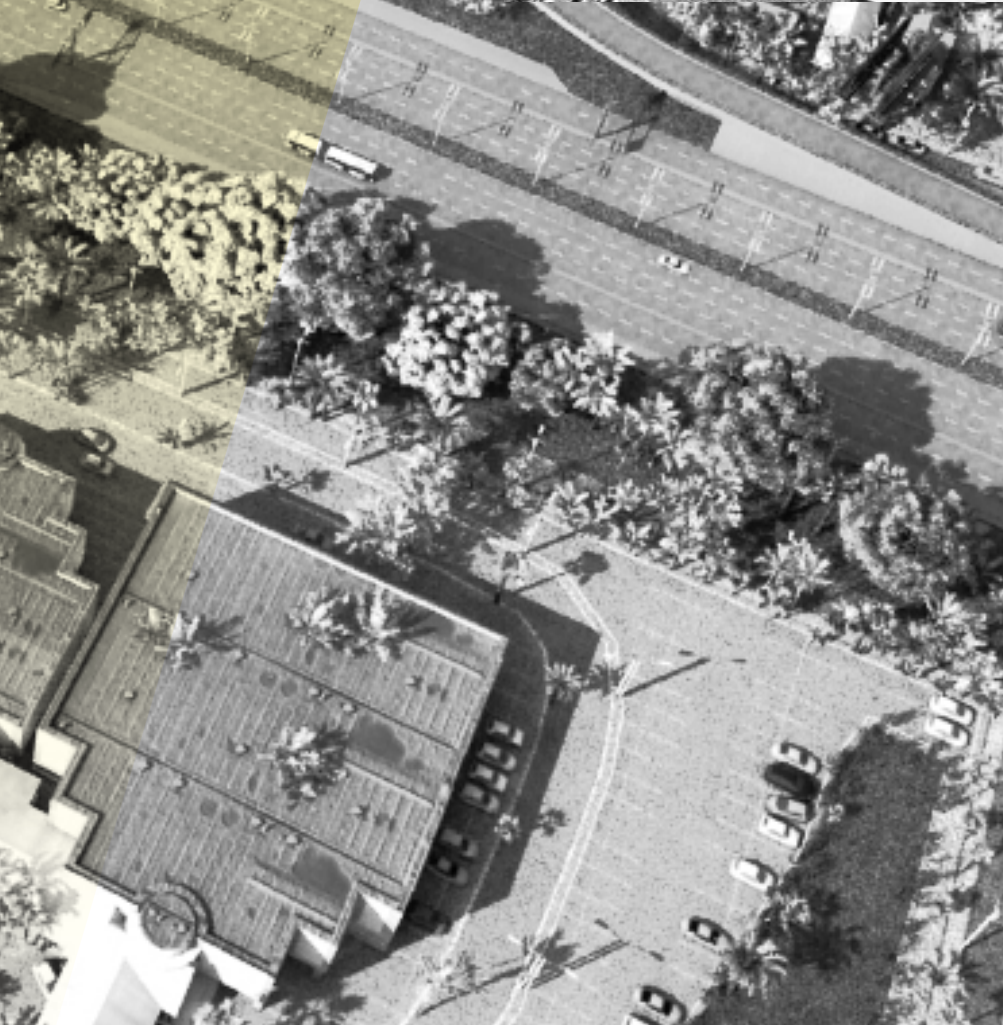


# ROTANA HOTEL

??







??

??  
??  
??  
??  
??  
??  
??  
??  
??  
??  
????????





IRANMALL CAR SHOWROOM - 2016`



IRANMALL CAR SHOWROOM AERIAL VIEW - 2016`







????????????????????????????????????



IRANMALL HOTEL  
DURING CONSTRUCTION  
PHASE - 2016

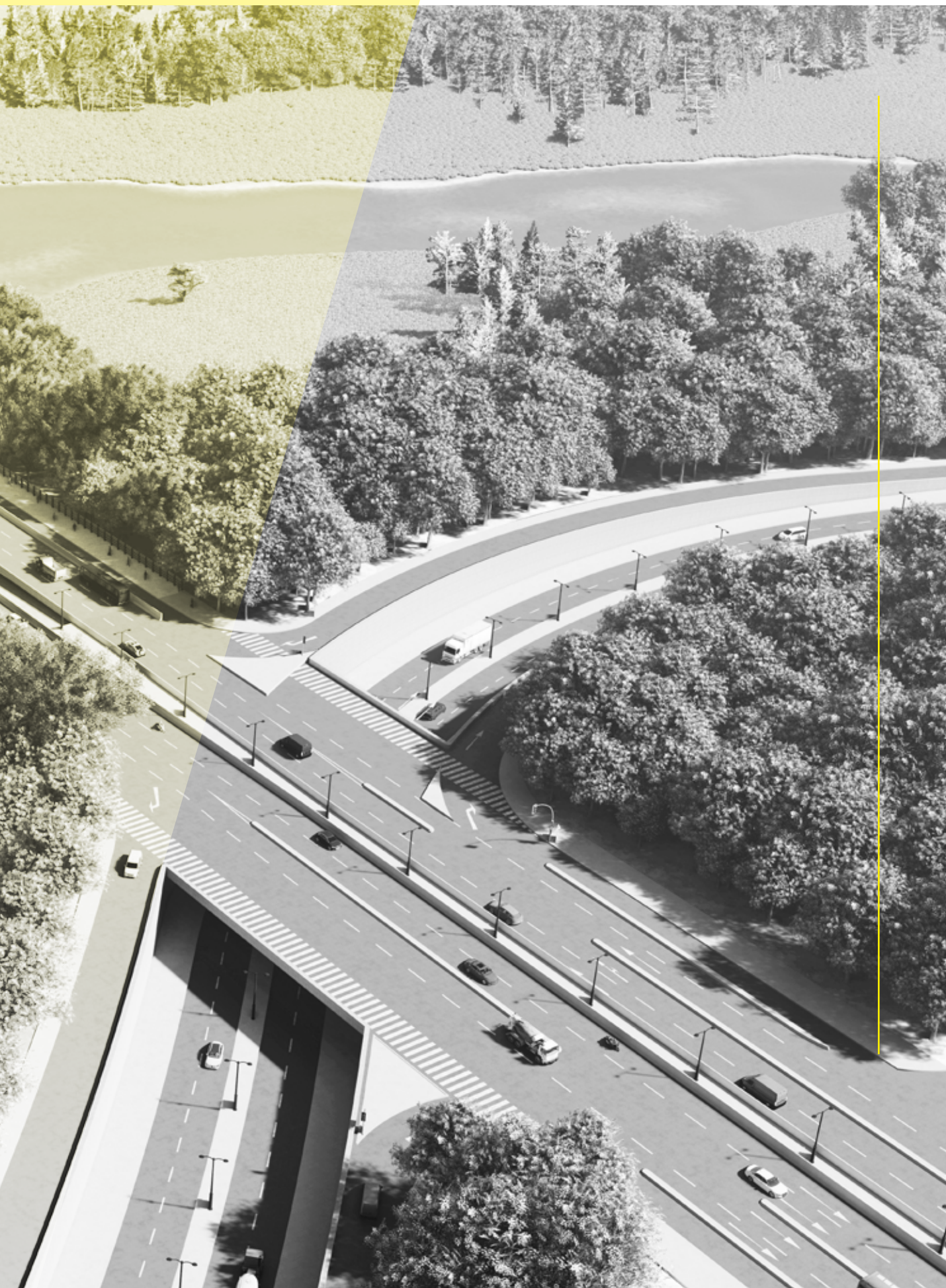






????????????









????????????????????????????????????

????????????????????????????????

????????????????????????????????



????????????????????????????????  
????????????????????????????????  
????????????????????????????????  
????????????????????????????????  
????????????????????????????????  
????????????????????????????????  
????????????????????????????????  
????????????????????????????????  
????????????????????????????????  
????????????????????????????????

PROJECTS





??



??

??????????

[illegible]





??

