

Owners and Tenants Receive free consultations at Zen Medical Clinic Thailand

**20% of all Medical treatments at Zen Clinic**

This is a full time Medical Center with doctors on the Premises making Tropicana the ideal place to reside.

For more information contact:

www.zen-clinic.com  
info@zen-clinic.com

**INTRODUCTION**

Tropicana Condotel is Situated at the very Top of Soi 6 Pratamnak Hill. This area is referred to by many as the Beverly Hills of Pattaya City. Units Are offered as shells for discounted prices, or Turn key fully furnished so all you Need do is walk in and your home. Furniture includes leather sofa, Full European style kitchen, Walk in closets, open plan bathroom, bed and covers, Internet TV, floor covers, Plants and paintings, euro style Wall coverings and great views of the Pattaya Gulf.

**ABOUT US**

Tropicana Condotel would like to offer you and your clients a great opportunity for property investment in a unique environment.

With only 11 rooms left and great financial packages with easy settlement terms , along with the facilities offered within Tropicana, makes it a unique investment and a great place to retire.

What makes Tropicana different from other condos in Pattaya, Is the fact that it has a full-time medical facility manned with doctors and staff to meet all its resident's needs.

The center is equipped with hyperbaric chambers, for the medical center and a unique beauty spa offering a wide range of services. This makes Tropicana the perfect condo for retirement, as we get older being close to an international medical facility can make a world of difference for a peace of mind.

**Facilities:**

- Swimming pool on the ground floor
- Swimming pool on the rooftop
- Fitness gymnasium
- Sauna and steam
- Full medical center with full-time doctors
- A spa offering a wide range of therapies
- The ability to have commercial offices on the second floor

**Terms:**

- Immediate settlement
- Receive 5% discount
- Delays Settlement
- Deposit 500,000 THB
- Immediate procession
- No monthly payments
- Settlement 6 months

Tropicana offers both shell rooms and fully furnished depending on the customers' requirements. We offer 5% commission on all sales.

If you would like to make an appointment and come and inspect the show rooms we will be happy to accommodate you.

Yours faithfully  
Anong Akkamasao  
Tropicana Developments



**CONDO FOR SALE**



START FROM:  
**4.1 M**



+66 (0) 87 140 0175  
+66 (0) 81 277 7772  
+66 (0) 65 669 6422

sales@issworldwide.com  
www.tropicana-condotel.com

389/480, Soi 6 Pratamnak Hill  
Pattaya City, Thailand



Owners and tenants

**Receive 20% Discount**

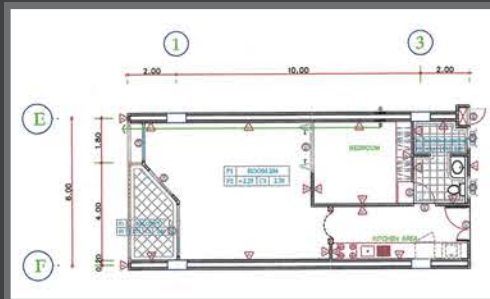
VIP Yachtcharters Pattaya

For more information contact:

www.yachtcharters-pattaya.com  
info@yachtcharters-pattaya.com



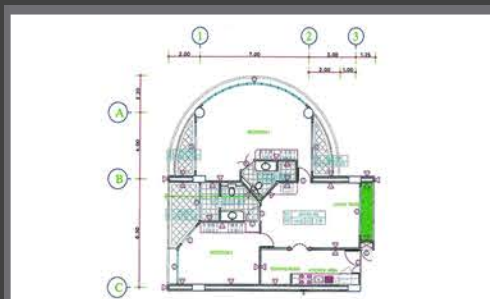
# FLOOR PLANS



## 2<sup>nd</sup> Floor | Unit 204

Size:	80.03m <sup>2</sup>
Shell unit cost:	3,601,350 THB
Finished unit turn key:	4,455,900 THB
Transfer fee:	50/50
Rental guarantee:	15,000 THB per month for 2 years
Foreign ownership:	Available

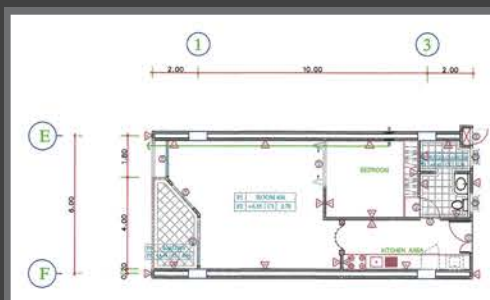
The ability to have commercial offices on the second floor



## 4<sup>th</sup> Floor | Unit 401

Size:	123.02m <sup>2</sup>
Shell unit cost:	6,151,000 THB
Finished unit turn key:	7,135,160 THB
Transfer fee:	50/50
Rental guarantee:	18,000 THB per month for 2 years
Foreign ownership:	Available

The ability to have commercial offices on the second floor



## 4<sup>th</sup> Floor | Unit 404

Size:	80.03m <sup>2</sup>
Shell unit cost:	N/A
Finished unit turn key:	4,900,000 THB
Transfer fee:	50/50
Rental guarantee:	15,000bht per month for 2 years
Foreign ownership:	Available

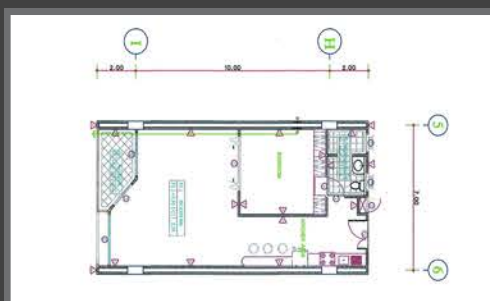
The ability to have commercial offices on the second floor



## 4<sup>th</sup> Floor | Unit 405

Size:	80.03m <sup>2</sup>
Shell unit cost:	N/A
Finished unit turn key:	4,900,000 THB
Transfer fee:	50/50
Rental guarantee:	15,000 THB per month for 2 years
Foreign ownership:	Available

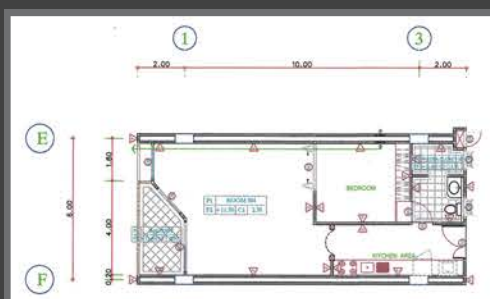
The ability to have commercial offices on the second floor



## 4<sup>th</sup> Floor | Unit 408

Size:	93.72m <sup>2</sup>
Shell unit cost:	4,686,000 THB
Finished unit turn key:	5,435,760 THB
Transfer fee:	50/50
Rental guarantee:	15,000 THB per month for 2 years
Foreign ownership:	Available

The ability to have commercial offices on the second floor



## 5<sup>th</sup> Floor | Unit 504

Size:	80.03m <sup>2</sup>
Shell unit cost:	4,200,000 THB
Finished unit turn key:	4,900,000 THB
Transfer fee:	50/50
Rental guarantee:	15,000 THB per month for 2 years
Foreign ownership:	Available

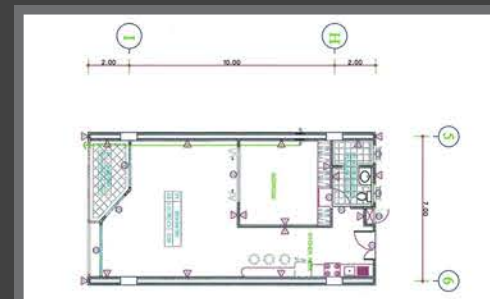
The ability to have commercial offices on the second floor



## 5<sup>th</sup> Floor | Unit 507

Size:	92.08m <sup>2</sup>
Shell unit cost:	4,640,000 THB
Finished unit turn key:	5,435,760 THB
Transfer fee:	50/50
Rental guarantee:	18,000bht per month for 2 years
Foreign ownership:	Available

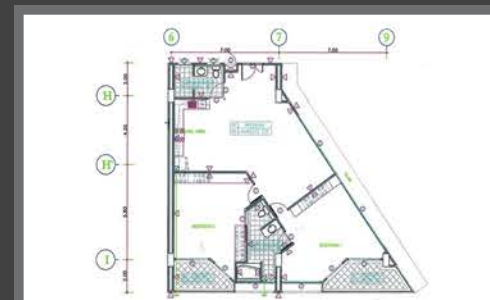
The ability to have commercial offices on the second floor



## 5<sup>th</sup> Floor | Unit 508

Size:	93.72m <sup>2</sup>
Shell unit cost:	4,686,000 THB
Finished unit turn key:	5,435,760 THB
Transfer fee:	50/50
Rental guarantee:	18,000 THB per month for 2 years
Foreign ownership:	Available

The ability to have commercial offices on the second floor



## 6<sup>th</sup> Floor | Unit 610

Size:	162.01m <sup>2</sup>
Shell unit cost:	8,100,500 THB
Finished unit turn key:	9,396,580 THB
Transfer fee:	50/50
Rental guarantee:	18,000 THB per month for 2 years
Foreign ownership:	Available

The ability to have commercial offices on the second floor

## MAIN FLOOR PLAN

