

84 Series Multifunction Digital SMARTimer



**Now programmable
with
Apple iPhones**



Offering flexibility, easy installation, and high precision timing.

Quick and flexible programming right from your smartphone.
With NFC technology and "Finder Toolbox NFC" for Android and iOS.



"Two in one": two totally independent programmable channels in a single product.

- Two programming modes: "Smart" mode via smartphone with NFC communication or "Classic" mode via the joystick
- Wide backlit display for easy reading of all information during the programming phase and during normal operation
- Ability to create new specific functions, mixing the 30 available functions on each channel
- High precision and flexibility of time set-up:
 - Time units: 0.1 seconds, seconds, minutes, hours
 - Set-time to 4 digits, anywhere between 000.1 second and 9999 hours
- Large display allows easy viewing: set time, current time, timing in progress, input command state, output state
- 1 CO (16 A) + 1 CO (16 A) output contacts (UL rated to 10A)

Approvals (according to type)





Type 84.02.0.230.0000

- Nominal voltage: 110...240 V AC/DC (non-polarized)
- Operating range: 90...264 V AC/DC (47/63Hz)

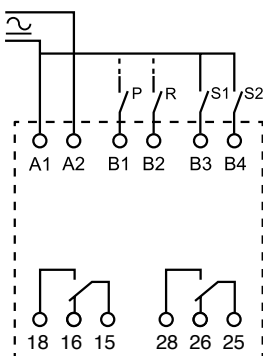


Type 84.02.0.024.0000

- Nominal voltage: 12...24 V AC/DC (non-polarized)
- Operating range: 10...30 V AC/DC (47/63Hz)
- Option to directly connect proximity sensors (PNP and NPN) to the timer input (24 V version only)

Functions

OFF	Relay OFF
ON	Relay ON
AI	On-delay
DI	Interval
GI	Pulse delayed
LI	Asymmetrical flasher (starting pulse ON)
PI	Asymmetrical flasher (starting pulse OFF)
SW	Symmetrical flasher (starting pulse ON)
SP	Symmetrical flasher (starting pulse OFF)
AE	On-delay with control signal
AC	On-delay with maintained control signal
BE	Off-delay with control signal
DE	Interval with control signal ON
DC	Interval with maintained control signal
EE	Interval with control signal OFF
FE	Interval with control signal ON and OFF
EEa	Interval with control signal OFF (retriggerable)
EEb	Interval with control signal OFF
WD	Watchdog (retriggerable interval with control signal ON)
GE	Pulse delayed with control signal ON
GC	Pulse delayed with maintained control signal
LE	Asymmetrical flasher (starting pulse ON) with control signal
LC	Asymmetrical flasher (starting pulse on) with maintained control signal
PE	Asymmetrical flasher (starting pulse OFF) with control signal
PC	Asymmetrical flasher (starting pulse off) with maintained control signal
CEb	On and off independent delays with control signal
IT	Timing step
SS	Monostable controlled by Signal switch
PS	Monostable controlled by Pause switch
SHp	Shower function (off-delay with control signal and pause signal)



- Two independent Start inputs - one per channel
- One common Reset input (select to apply to either, or both, channels)
- One common Pause input (select to apply to either, or both, channels)
- PIN to protect access to programming session
- Up or Down timing modes
- Setting accuracy-full range: $\pm 0.05\%$
- Ambient temperature range: $-20^{\circ} + 50^{\circ}$
- 35 mm rail (EN 60715) mount

