

NINJA SPRINGS



Made in Great Britain



**Expert Manufacturers of Resilient Hangers
and Vibration Isolation Equipment.**

*If you have vibration related Noise issues on your
projects..... Call in the Ninjas*



Surface Protection for all applications

Advanced Surface protection for all applications

A product must be suitable of its intended use and the environment in which it will be used in. Ninja Springs offer a range of solutions from simple indoor installations to the most tricky marine environments.

Typical expected life by surface treatment types:

Zinc plating = 60 hours
KL100 = 480 hours / 720 hours
Hot Dip Galv = 600 hours
Zinc Nickel = 1000 hours

Testing is conducted to ISO 9227:2017 : Corrosion tests in artificial atmospheres – Salt spray tests





Surface Protection for all applications

Performance Coatings:

Carbon steel components are coated with a sacrificial layer to prevent the deterioration of the base material and prolong its life expectancy.

KL100 - Performance:

DELTA-PROTEKT® KL 100 highly effective anti-corrosion protection

Product description:

DELTA-PROTEKT® KL 100 is a zinc flake basecoat. This basecoat provides highly effective anti-corrosion protection with a relatively thin coating.

Like all DELTA-MKS® products, DELTA-PROTEKT® KL 100 is free of any harmful heavy metals, such as Cr-(VI), and conforms to EU guidelines relating to the End-of-Life Vehicle Directive (2000/53/EC) and the Directive on the Restriction of the Use of Certain Hazardous Substances in Electrical and Electronic Equipment (2002/95/EC). No hydrogen embrittlement occurs in the application of DELTA-PROTEKT® KL 100. As appropriate, the coating process can be carried out jigged or in bulk.

The corrosion resistance of Delta Protekt KL100 will increase with increasing coating thickness and number of coats, it exhibits a self-healing effect caused by the migration of zinc corrosion products into damaged areas.

Standard protection – salt spray test according to ASTM B-117 over 480 h. 20 to 26 g/m² dry coat weight equivalent to 6 to 8µ dry coat thickness.

Delta Protekt KL100 can be used in areas exposed to heat up to 180°C and is resistant to organic solvents.

Delta Protekt KL100 provides bimetallic corrosion resistance when used on parts assembled to aluminium





Surface Protection for all applications

Astec 3000 - Zinc Nickle - 1000Hours

Process for zinc nickel, 12 microns minimum, clear trivalent passivation and organic seal.

Zinc Nickel is the high end corrosion protection finish of the electroplated coatings. Designed as a highly functional coating to offer superior levels of corrosion resistance in increasingly demanding environments.

As an electroplated coating the product produces a sacrificial layer that will corrode preferentially to the steel substrate. This means that unlike barrier coats, such as paint, the coating can still offer protection following in-service damage.

Astec 3000 is not just about a product, it's a whole process designed to ensure the end coating is a market benchmark for quality and performance.

Formulated and perfected through more than 20 years of high volume production our Zinc Nickel process blends all our knowledge, experience, chemistry and equipment to provide a unique coating that meets the most demanding specifications.

Superior Metals:

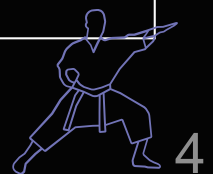
For harsher environments components can be made from higher grade materials which are less susceptible to corrosion in the specified environment.

304 Stainless steel (A2)

304 contains 18% chromium and 8% nickel

316 Stainless steel (A4)

316 contains 16% chromium, 10% nickel and 2% molybdenum. The molybdenum is added to help resist corrosion to chlorides (like sea water and de-icing salts).



Product Codes



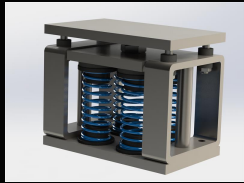
Part Number	Weight (Kg)	Static Deflection(mm)	SPRING COLOUR	Product Code	Finish
CSH-M-005-50	5	50	DARK GREY	CSH-M-***-50	Standard BZP/Powder Coated Finish
CSH-M-010-50	10	50	LIGHT GREY	CSH-M-ZN-***-50	Zinc Nickel/Powder Coated Finish
CSH-M-018-50	18	50	CREAM	CSH-M-KL-***-50	KL100/Powder Coated Finish
CSH-M-025-50	25	50	YELLOW	CSH-M-A2-***-50	Stainless Steel 304/Powder Coated Finish
CSH-M-050-50	50	50	GREEN	CSH-M-A4-***-50	Stainless Steel 316/Powder Coated Finish
CSH-M-075-50	75	50	ORANGE		
CSH-M-100-50	100	50	RED		
CSH-M-125-50	125	50	BROWN		
CSH-M-150-50	150	50	BLUE		
CSH-M-200-50	200	50	WHITE		
CSH-M-250-50	250	50	BLACK		
CSH-M-300-50	300	50	PINK		
CSH-M-400-50	400	50	PURPLE		
*** - Weight rating in Kg as per table					

Ninja Spring Hanger



Part number	Weight (Kg)	Static Deflection (mm)	Spring Colour	Product Code	Finish
SUMO-100-50	100	50	YELLOW	SUMO-***-50	Standard BZP/Powder Coated Finish
SUMO-200-50	200	50	GREEN	SUMO-ZN-***-50	Zinc Nickel/Powder Coated Finish
SUMO-300-50	300	50	ORANGE	SUMO-KL-***-50	KL100/Powder Coated Finish
SUMO-400-50	400	50	RED	SUMO-A2-***-50	Stainless Steel 304/Powder Coated Finish
SUMO-500-50	500	50	BROWN	SUMO-A4-***-50	Stainless Steel 316/Powder Coated Finish
SUMO-600-50	600	50	BLUE		
SUMO-800-50	800	50	WHITE		
SUMO-1000-50	1000	50	BLACK		
*** - Weight rating in Kg as per table					

SUMO Ground Mount



Part Number	Weight (Kg)	Static Deflection (mm)	SPRING COLOUR	Product Code	Finish
KETTO-010-50	10	50	DARK GREY	KETTO-***-50	Standard BZP/Powder Coated Finish
KETTO-020-50	20	50	LIGHT GREY	KETTO-ZN-***-50	Zinc Nickel/Powder Coated Finish
KETTO-036-50	36	50	CREAM	KETTO-KL-***-50	KL100/Powder Coated Finish
KETTO-050-50	50	50	YELLOW	KETTO-A2-***-50	Stainless Steel 304/Powder Coated Finish
KETTO-100-50	100	50	GREEN	KETTO-A4-***-50	Stainless Steel 316/Powder Coated Finish
KETTO-150-50	150	50	ORANGE		
KETTO-200-50	200	50	RED		
KETTO-250-50	250	50	BROWN		
KETTO-300-50	300	50	BLUE		
KETTO-400-50	400	50	WHITE		
KETTO-500-50	500	50	BLACK		
*** - Weight rating in Kg as per table					

KETTO Ground Mount





NINJA SPRINGS



Made in Great Britain



Contact us Today:

Sales@NinjaSprings.com

Telephone: 01865 600343

