

Austin Moore Hip Stem System

Surgical Technique



Biotech GmbH
Hauptstraße 113.
56598 Rheinbrohl Germany
Tel : +49 2635 92221-0
Email : office-de@biotech-medical.net
www.biotech-medical.com



BIOTECH

REF:
VB-001-PROSP-ST-08-EN-00

Revision
2

Publication date :
01.04.2022.

CE 1011

“Movement is Life”

The philosophy

- proximal fixation of the implant is crucial in the success of the surgery
- a tight fixation gives mechanical stability and allow the grafts in the fenestration to consolidate, making it a self-locking device
- this prevents over-loading of calcar – no subsidence, no loosening, no failure

Proximal fixation

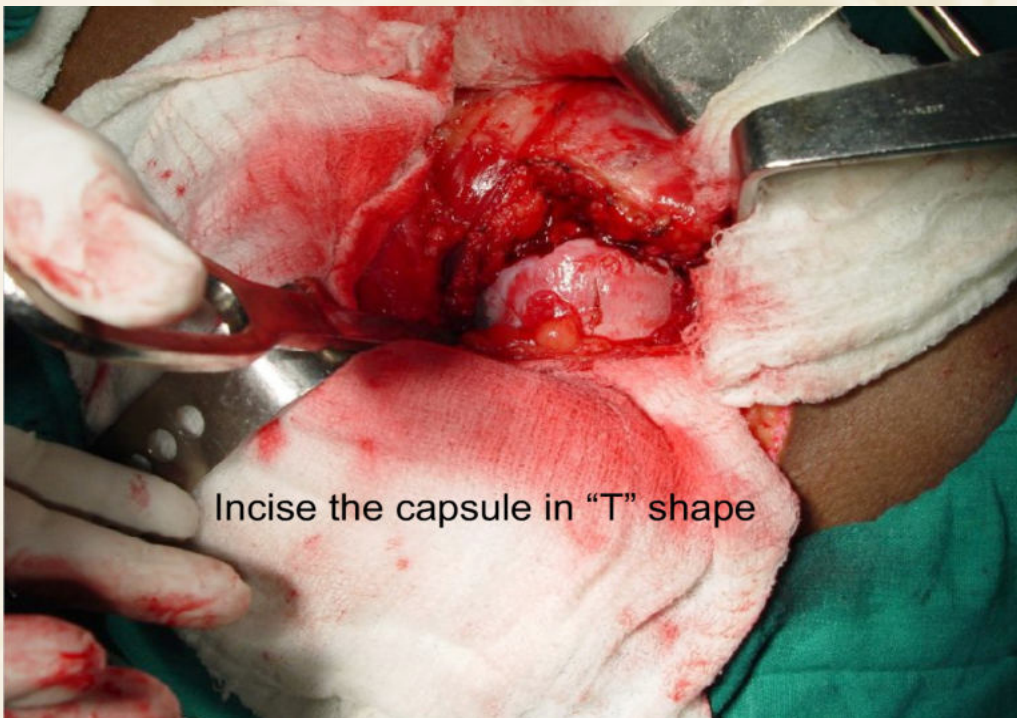
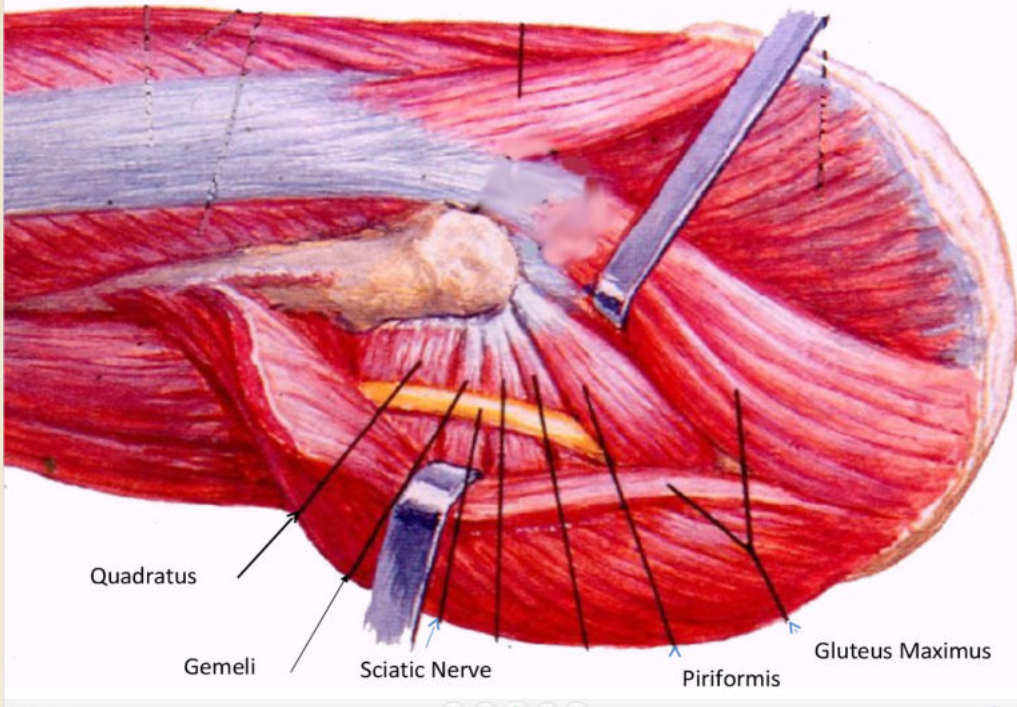
Impaction grafting:

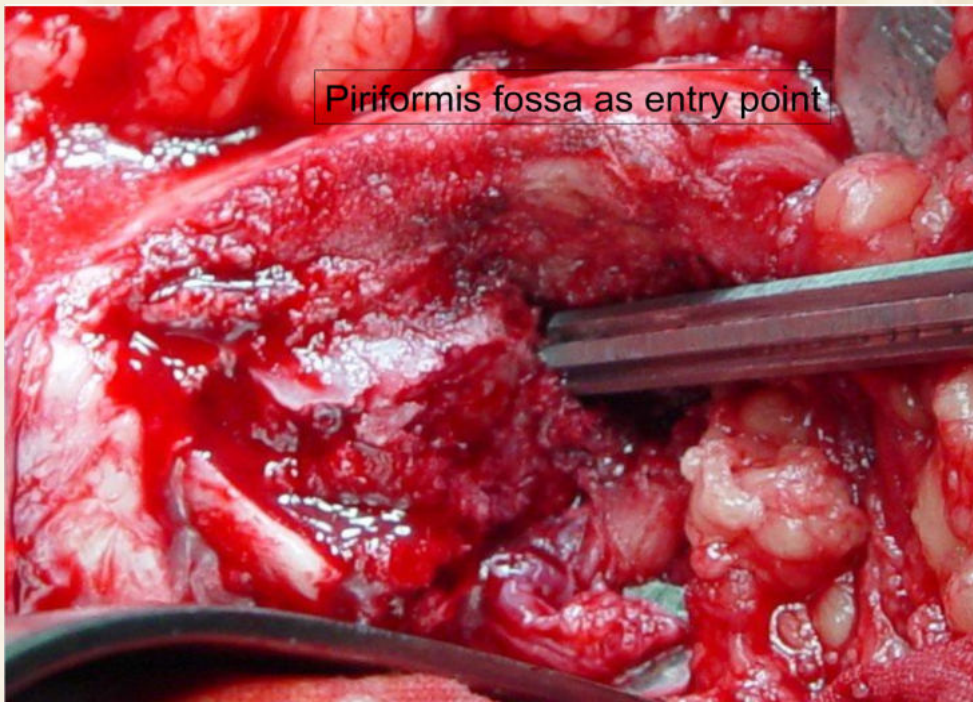
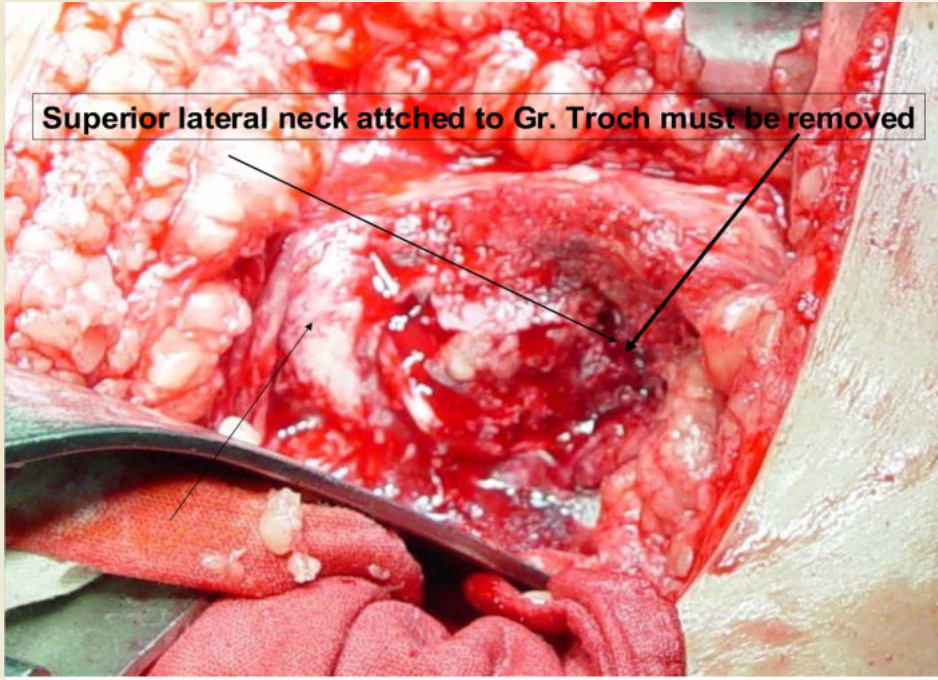
- the most important area is the medial side near calcar. Graft should be inserted when nearly half of the prosthesis has gone inside
- fill the fenestrations of the prosthesis with bone grafts, as the prosthesis advances into the canal
- the collar of the implant should not over-hang on the calcar
- if done properly, it should rest on the neck and will compress the grafts

Posterio-lateral incision



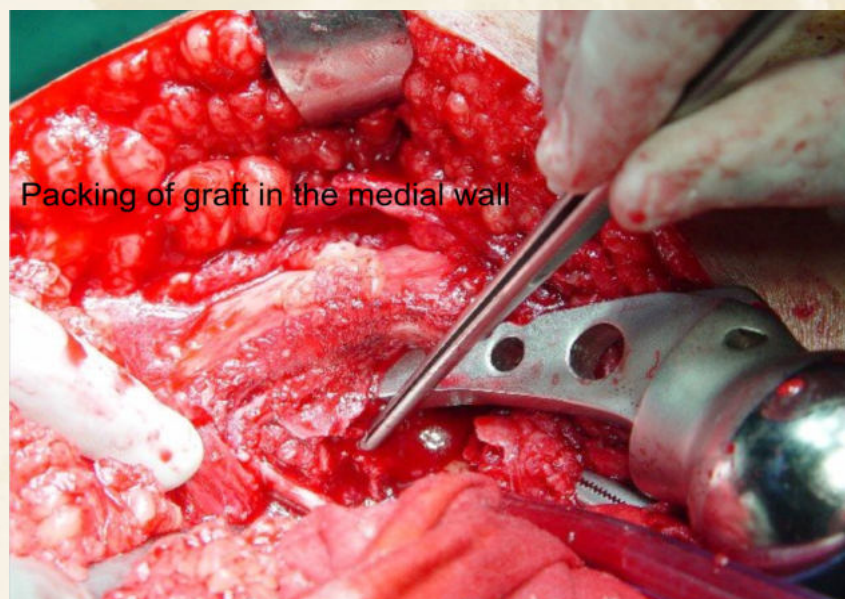
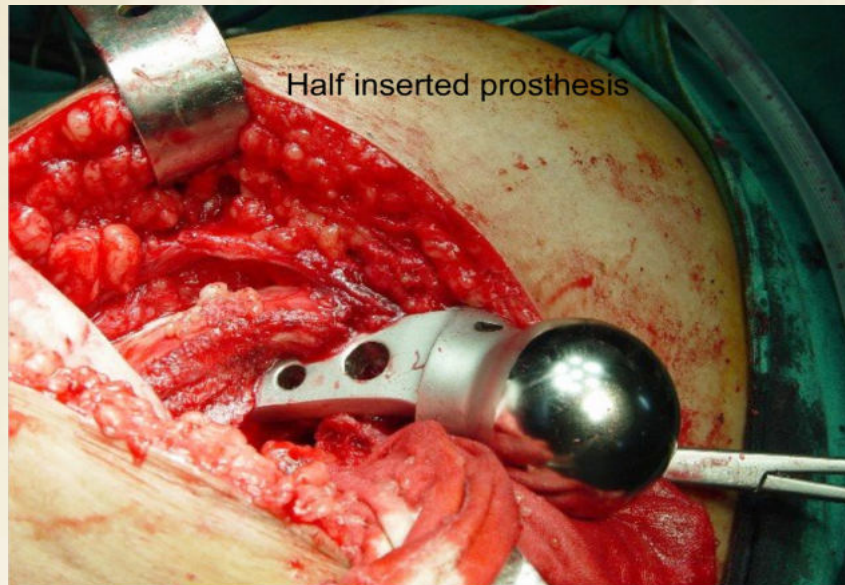
Cut the rotators close to the bone

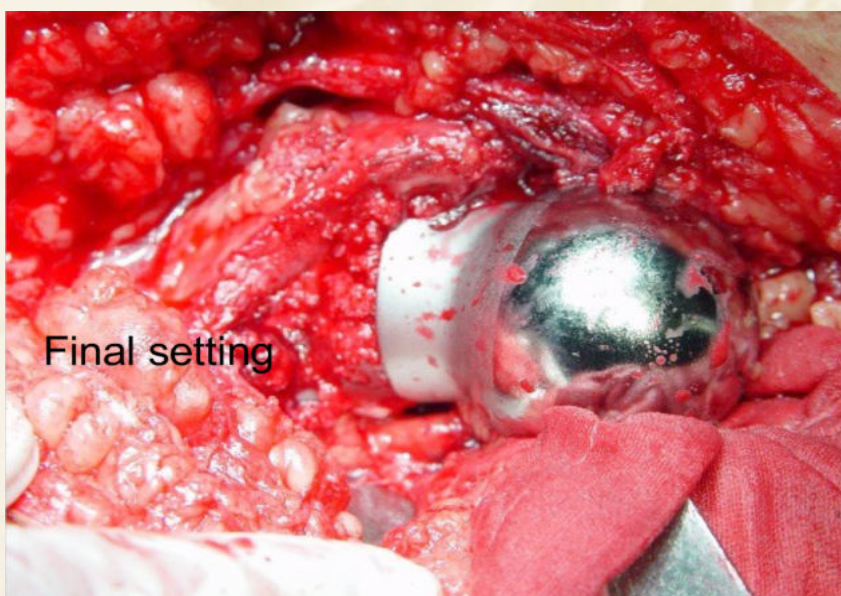
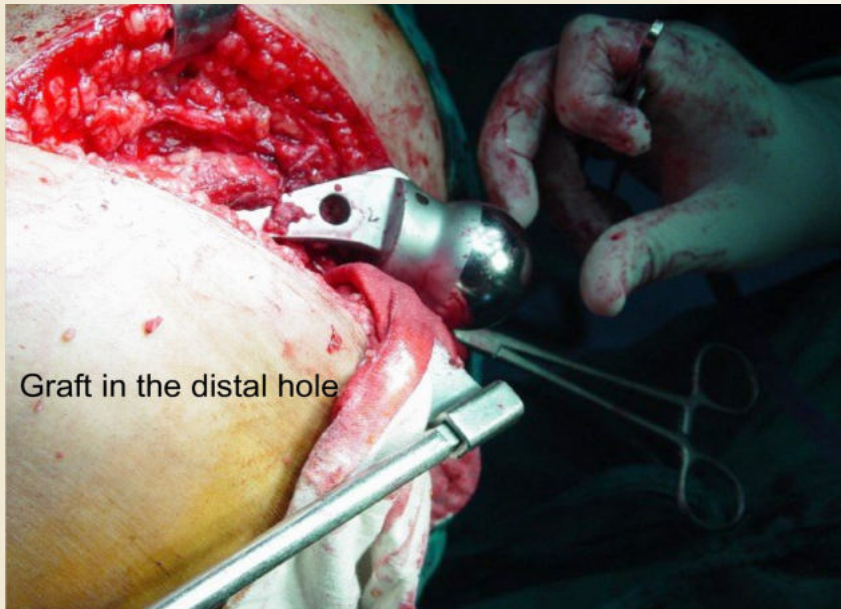


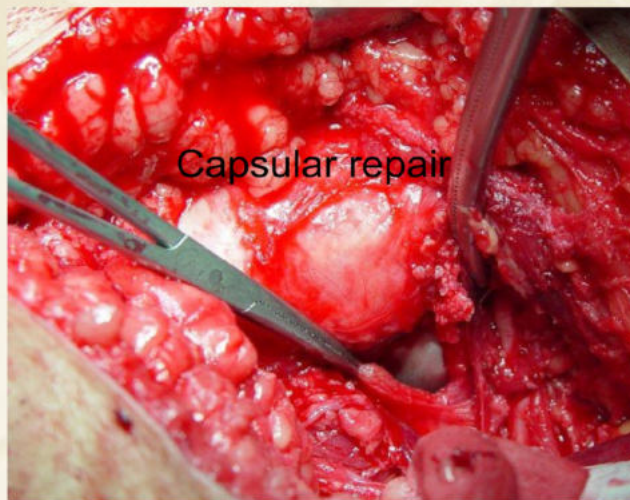


Selection of Implant

- Pre operative planning
- Intra-operative planning
- Correct head diameter
- Correct stem width
- Correct length of collar
- Cement
- Tension band wiring







BIOTECH

Biotech GmbH
Hauptstraße 113.
56598 Rheinbrohl Germany
Tel : +49 2635 92221-0
Email : office-de@biotech-medical.net
www.biotech-medical.com

“Movement is Life”

REF:
VB-001-PROSP-ST-08-EN-00

Revision
2

Publication date :
01.04.2022.

CE 1011