

# ULTRACAR

**AU SERVICE  
DES CONCESSIONNAIRES  
TEXTO INFO: 514-592-0005**



## CAMIONS

Guide Produit RAM 1500

POWDER COAT NOIR RAM 1500

**depuis 1982**

**2025**

**514.592.0005**



**ultracarmontreal**  
Suivez-nous *Instagram*

02 DODGE RAM 1500 - SUPPORT DE CAMION



Maintain your truck’s stylish good looks while providing a practical tool to carry ladders and long loads, secure shifting cargo, or mount most any type of light or accessory.



PRODUCT CODE: ULT15006  
Horizontal Bar; Powder Coated; Black; Steel

• Requires Installation Kit: 30167



PRODUCT CODE: ULT12400  
Louvered Rack Frame Only; Powder Coated; Black; Steel; With Tie Down Hooks

• Requires Installation Kit: 30167



PRODUCT CODE: ULTHR001B  
Powder Coated; Titanium Black; Steel; With Mounting Kit; Can Be Used With Cross Bed Tool Box



PRODUCT CODE: ULT144TL  
With Three 6-3/4 Inch Light Cutouts (Lights Not Included) on Driver and Passenger Side of Frame; Round Bars On Side; Powder Coated; Black; Steel

•Requires Installation Kit: 30167



PRODUCT CODE: ULT144LV  
Insert Rack; Louvered Rack; Powder Coated; Black; Steel

• Requires Installation Kit: 30167



PRODUCT CODE: ULT14400  
Insert Rack; Frame Only; Powder Coated; Black; Steel

• Requires Installation Kit : 30167



03 DODGE RAM 1500 - SUPPORT DE CAMION (CONT.)



PRODUCT CODE: ULT144TR  
Insert Rack; Three Round Bar Vertical Bars On Sides; Powder Coated; Black; Steel

• Requires Installation Kit: 30167



PRODUCT CODE: ULT57-81085  
Punch Style; Powder Coated; Black; Aluminum; Comp. w/ Tool Boxes; With Channels To Bolt Vari-ous Accessories; Mounts In Tie Down Location



PRODUCT CODE: ULT18819331  
Standard; Louvered; Powder Coated; Matte Black; Aluminum; Can Be Used w/ Cross BedToolbox/ Most Tonneau Covers; With Mounting Kit



PRODUCT CODE: ULT18819331-EC  
Frame Only; Powder Coated; Matte Black; Alumi-num; Can Be Used w/ Cross Bed Tool Box/Most Tonneau Covers; With Mounting Kit



PRODUCT CODE: ULT18819331-LHP  
Low Pro Hollow Point; Frame Only; Lighted; Powder Coated; Matte Black; Aluminum; Can Be Used w/ Cross Bed Tool Box/Most Tonneau Covers; w/ Installations Hardware/ Modular Wiring Harness



PRODUCT CODE: ULT18819331-W  
Standard; Louvered With Window Cut Out; Pow-der Coated; Matte Black; Aluminum; Can Be Used w/ Cross Bed Tool Box/Most Tonneau Covers; With Installation Hardware



PRODUCT CODE: ULT18819331-HP  
Standard Hollow; Frame Only; Powder Coated; Matte Black; Aluminum; Can Be Used w/ Cross Bed Tool Box/Most Tonneau Covers; With Mounting Kit



SPORTSBAR 2.0  
Textured Black Mild Steel Sport Bar  
PRODUCT CODE: ULT070BIG911000T





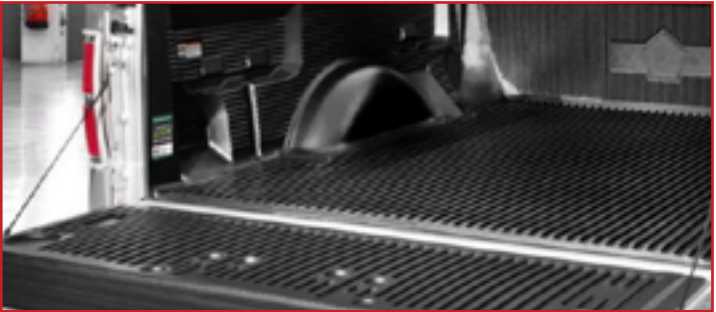
04 DODGE RAM 1500 - BEDLINERS



PRODUCT CODE: ULT22032X  
Thick Ribbed Construction Provides Extra Protection, Allows Airflow Between Bedliner And Truck Bed For Moisture Evaporation • Manufactured From Model Specific Molds That Provide A Perfect Fit And More Cargo Space Than Any Other Bedliner • Over Rail Models Provide Protection Of The Truck Bed Rails • Under Rail Models Allow For Truck Caps, Tonneau Covers, Or Aftermarket Rail Protectors • Skid Resistance Surface • *With Tailgate Liner/Without Tie-Down Plugs*



PRODUCT CODE: ULTILT19SBK  
Anti-Skid TPO Composite Surface • 3/4 Inch Thick Padded Floor Gives You Impact Protection And Is Easy On The Knees • Chemical, And Stain Resistant • Integrated Tailgate Gap Guard Hinge Keeps Dirt And Dust Out Of Truck Bed • Designed For Exterior Use – Will Not Absorb Water



PRODUCT CODE: ULT62016SRZZX  
Industry Best Skid Resistance For Exceptional Protection Of Truck And Cargo • Thick Ribbed Construction For More Durability • High Gloss UV Resistant Finish Like New Appearance • *Front & Rear Tie-down Cutouts*



PRODUCT CODE: ULTWTC36706  
Armors Against Scratches, Dents And Paint Damage By Seamlessly Lining The Truck Bed And Tailgate • Flexible And Durable Product Which Is Chemical And UV Resistant • The Liner Securely Fits The Exact Contours Of The Truck Bed • Will Not Crack, Break Or Warp In Even Extreme Temperatures • Made From A 100 Percent Recyclable And Odorless Thermoplastic Elastome

BED EXTENDERS



*Provides the extra clearance needed when used with some tonneau cover rails. Flip it out with the tailgate open to gain up to 2-feet of enclosed cargo area. Flip it inside and close the tailgate to keep tools and smaller cargo contained in the truck bed.*



PRODUCT CODE: ULT74840-01A



PRODUCT CODE: ULT74830-00A



05 DODGE RAM 1500 - BULL BAR



PRODUCT CODE: ULTB0038B  
Bull Bar; Powder Coated; Black; Steel; 3 Inch Diameter; With Skid Plate; With Holes For Optional Lighting; 6.5 Inch Max Light/ 20 Inch Max Light Bar  
*Installation Will Interfere With Parking Sensors, Proximity Sensors, Forward Facing Laser Brake, Lane Keep Assist, Camera, and Cruise Control Sensors*



PRODUCT CODE: ULTB1520B  
Bull Bar; Powder Coated; Black; Steel; 3-1/2 Inch Diameter; With Skid Plate; Use G9018MK To Mount Optional Lighting  
*Installation Will Interfere With Parking Sensors, Proximity Sensors, Forward Facing Laser Brake, Lane Keep Assist, Camera, and Cruise Control Sensors*



PRODUCT CODE: ULTB1520S  
Bull Bar; TFX Bull Bars; Polished; Stainless Steel; 3-1/2 Inch Diameter; With Skid Plate; Use G9018MK To Mount Optional Lighting  
*Installation Will Interfere With Parking Sensors, Proximity Sensors, Forward Facing Laser Brake, Lane Keep Assist, Camera, and Cruise Control Sensors*



PRODUCT CODE: ULT31-3970  
Bull Bar; E-Series; Polished; Stainless Steel; 3 Inch Diameter; With Brushed Aluminum Skid Plate; With Light Mounting Tabs; 6 Inch Max Light  
*Installation Will Interfere With Parking Sensors, Proximity Sensors, Forward Facing Laser Brake, Lane Keep Assist, Camera, and Cruise Control Sensors*



PRODUCT CODE: ULT32-31125T  
Bull Bar; Contour; Black Textured Powder Coated Steel; 3-1/2 Inch Diameter; Without Skid Plate; With Light Mounting Holes  
*Minor Trimming Of Air Dam May Be Required • May Interfere With Function of Front Parking Sensor If Equipped*



PRODUCT CODE: ULT32-3975  
Bull Bar; Black Powder Coated Steel; 3 Inch Diameter; With Brushed Stainless Skid Plate; With Light Mounting Tabs; 6 Inch Max Light  
*May Interfere With Function of Front Parking Sensor If Equipped*



PRODUCT CODE: ULT55662LT  
Bull Bar; Charger- RC2 Light Ready; Black Textured Powder Coated Steel; 3 Inch Diameter; With 2 Central 3 Inch Square Lights; With Hexagonal Mesh Skid Plate  
*Installation Will Interfere With Parking Sensors, Proximity Sensors, Forward Facing Laser Brake, Lane Keep Assist, Camera, and Cruise Control Sensors*

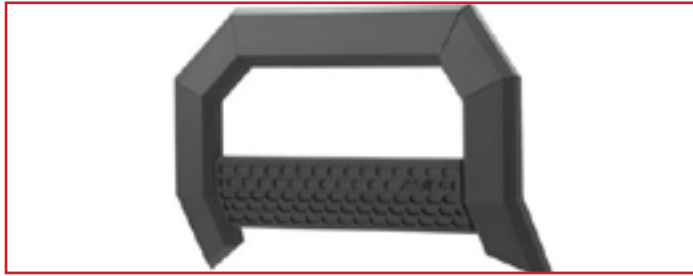




06 DODGE RAM 1500 - BULL BAR (CONT.)



PRODUCT CODE: ULT47021208  
Bull Bar; Polished; Stainless Steel; 3.5 Inch Diameter; With Built In 20 Inch LED Light Bar With Flood Beam Pattern; With Wiring Harness With 30 Amp Fuse/ Universal And Deutsch Connectors/ LED Switch; With Skid Plate  
*May Interfere With Function of Front Parking Sensor If Equipped*



PRODUCT CODE: ULT2165002  
Bull Bar; Powder Coated; Carbide Black; Aluminum; 5-1/2 Inch Diameter; Without Work Lights In Cross Bar; With Skid Plate; With Track Mounting System For Light Mounts; With Octagonal Grid Textured Powder Coated Black Cover Plate  
*May Interfere With Function of Front Parking Sensor If Equipped*



PRODUCT CODE: ULT35-5008  
Bull Bar; Polished; Stainless Steel; 3 Inch Diameter; With Brushed Stainless Skid Plate; With Track Mounting System For Light Mounts  
*May Interfere With Function of Front Parking Sensor If EquippedCamera, and Cruise Control Sensors*



PRODUCT CODE: ULTAB-DO11-NL  
Bull Bar; Armour; Satin Black; Steel; 3 Inch Diameter Tube; With Light Mounting Tabs; Without Skid Plate  
*Will Work With and Without Sensors. Plugs are included for the sensor holes if the vehicle is not equipped with sensor holes.*



PRODUCT CODE: ULT86521208  
Bull Bar; Revolution™; Textured Powder Coated; Black Matte; Steel; Chiseled Design; With LED Light Bar; Tow Hook Mount  
*May Interfere With Function of Front Parking Sensor If Equipped*



PRODUCT CODE: ULT55266T  
Bull Bar; Charger- RC2; Textured; Black; Mild Steel; 2.5 Inch Diameter; With Hexagonal Mesh Skid Plate  
*Installation Will Interfere With Parking Sensors, Proximity Sensors, Forward Facing Laser Brake, Camera, Lane Keep Assist, and Cruise Control Sensors*



PRODUCT CODE: ULT55663T  
Bull Bar; Charger- RC2 Light Ready; Black Textured Powder Coated Mild Steel; 3 Inch Diameter; With 20 Inch Central Light Mount; With Hexagonal Mesh Skid Plate; Without Light Bar  
*Installation Will Interfere With Parking Sensors, Proximity Sensors, Forward Facing Laser Brake, Camera, Lane Keep Assist, and Cruise Control Sensors*



07 DODGE RAM 1500 - PARE-CHOCS (AVANT)



PRODUCT CODE: ULTFPRB003TI  
Bumper; Pre-Runner; One Piece Design; Direct Fit; Mounting Hardware Included; Without Grille Guard; Without Winch Mount; Without D-Ring Mount; With Double Row Straight Light Bar Cutout; Black Titanium Powder Coated Steel  
• OE Sensor Compatible



PRODUCT CODE: ULT58-61075  
Bumper; One Piece Design; Direct-Fit; Mounting Hardware Included; Without Grille Guard; Without Winch Mount; Without D-Ring Mounts; With One 30 Inch Double Row Or Two 30 Inch Single Row Light Bar Mounts And Additional Light Mounts In Ends; Textured Black Steel



PRODUCT CODE: ULTDR19-X4251-1  
Bumper; One Piece Design; Direct Fit; Mounting Hardware Included; Without Grille Guard; With Internal Winch Mount For 12,000 Pound Warn Zeon Winch; With D-Ring Mounts; With Center 30 Inch Light Bar Mount; Powder Coated Black Steel



PRODUCT CODE: ULT40-615-19-MB  
Bumper; Low Profile; One Piece Design; Direct Fit; Mounting Hardware Included; Without Grille Guard; Without Winch Mount; With 3/4 Inch D-Ring Mount; With 5-1/2 Inch Fog Light Cutouts And 20-22 Inch Light Bar Cutout; Textured Powder Coated Matte Black Steel • Installation Will Interfere With Bumper Sensors Such As Parking, Proximity, Laser Brake, Lane Keep Assist, Camera, and Cruise Control Sensors



PRODUCT CODE: ULTF551402770103  
Bumper; Stealth Fighter; One Piece Design; Direct-Fit; Mounting Hardware Included; Without Grille Guard; Without Winch Mount; With Up To 40 Inch Light Bar Mount Or 10 Dually Light Mounts In Center; With D-Ring Mounts; Powder Coated Hammer Black Steel With Satin Black Panels  
• OE Sensors Can Be Re-Used



PRODUCT CODE: ULTFLDB008TI  
Bumper; TFX Front LD Bumpers; One Piece Design; Direct Fit; Mounting Hardware Included; Without Grille Guard; Without Winch Mount; Without D-Ring Mount; With 3 Inch LED Cube Light Cutouts And 20 Inch Double Row Straight Light Bar Cutout; Black Titanium Powder Coated Steel  
• With Sensor Holes - OE Sensor Compatible



PRODUCT CODE: ULT58-41075  
Bumper; Pro-Mod; Modular Design; Direct-Fit; Mounting Hardware Included; Without Grille Guard; Without Winch Mount; Without D-Ring Mounts; Textured Black Steel





08 DODGE RAM 1500 - BUMPERS (REAR)



PRODUCT CODE: ULTRLDB008TI  
Bumper; One Piece Design; Direct Fit; Mounting Hardware Included; Without D-Ring Mounts; With 3 Inch LED Flush Mount Cube Light Cutouts; Compatible With OE Receiver Hitch; Powder Coated Titanium Black Steel • **Compatible With OE Bumper Sensor**



PRODUCT CODE: ULTDR19-E4251-1  
Bumper; One Piece Design; Direct Fit; Mounting Hardware Included; With Mounts For Four Rigid Dually Lights Or Two 6 Rigid Inch Light Bars; Compatible With OEM Receiver Hitch; Powder Coated Black Steel  
• **Sensor Functionality Will Be Lost On Trucks With Less Than 6 Inches Of Lift**



PRODUCT CODE: ULT28130T  
Bumper; BR20.5; One Piece Design; Direct Fit; Mounting Hardware Included; With Light Pod Plates; Textured Powder Coat Black Steel; With Reverse Sensor Mounting Port And Integrated Steps



PRODUCT CODE: ULTSBD19HBSLE  
Bumper; Sport; One Piece Design; Direct Fit; Mounting Hardware Included; With D-Ring Mount; Compatible With OE Hitch; With LED Lights; Powder Coated Matte Black Steel; With Illuminated Side Steps • **Compatible With OE Bumper Sensor**



PRODUCT CODE: ULT58-81075  
Bumper; One Piece Design; Direct-Fit; Mounting Hardware Included; Op-tional Hitch Available; Without D-Ring Mounts; With Mounts For Auxiliary Lights; Textured Black Steel; With Retractable License Plate Holder



PRODUCT CODE: ULT61-615-19  
Bumper; Hardline; One Piece Design; Direct Fit; Mounting Hardware Included; Compatible With OE Receiver Hitch; Textured Powder Coated Black Steel  
• **Compatible With OE Bumper Sensor**



PRODUCT CODE: ULTDR19-W4251-B  
Bumper; Premium; One Piece Design; Direct Fit; Mounting Hardware Included; With D-Ring Mounts; Compatible With OEM Receiver Hitch; Bare Steel; With Integrated Steps  
• **OE Sensor Compatible; Sensor Mount Angles On Non-Lifted Trucks May Need To Be Adjusted**

09 DODGE RAM 1500 - ÉLARGISSEURS D'AILES



PRODUCT CODE: ULTPFFD3005T  
Fender Flares; Bolt On Style; 2 Inch Tire Coverage; Smooth Black; ABS Plastic; Set of 4  
• **Position On Vehicle: Front and Rear**



PRODUCT CODE: ULTPFFD3005S  
Fender Flare; TFX Fender Flares; Bolt On Style; 2 Inch Tire Coverage; Smooth Black; ABS Plastic; Set of 4  
• **Position On Vehicle: Front and Rear**



PRODUCT CODE: ULT50924-02  
Fender Flare; Pocket Style ®; 1-1/2 Tire Coverage; Matte Black; Dura-Flex ® 2000 ABS Smooth Plastic; Front 6.13 Inch/ Rear 7 Inch Flare Height; Set Of 4  
• **Position On Vehicle: Front and Rear**



PRODUCT CODE: ULT50926-02  
Fender Flare; Extend-A-Fender ®; Matte Black; Dura-Flex ® 2000 ABS Smooth Plastic; Set Of 4  
• **Position On Vehicle: Front and Rear**



PRODUCT CODE: ULT50928-02  
Fender Flare; "OE" Style ®; Matte Black; Dura-Flex ® 2000 ABS Smooth Plastic; Set Of 4  
• **Position On Vehicle: Front**



PRODUCT CODE: ULTSX131T  
Fender Flare; SX-Sport Style ™; Textured Black; Tri-Flex ™ ABS Thermoplastic; Set Of 4  
• **Position On Vehicle: Front and Rear**



PRODUCT CODE: ULT752954  
Fender Flare; Rugged Look; Textured Black/ Paintable; ABS Plastic; Set Of 4  
• **Position On Vehicle: Front and Rear**



10 DODGE RAM 1500 - CUSTOM GRILLE



Enhance your vehicle’s front end with a custom grille. Manufactured from high quality materials for added strength, durability, and resistance to corrosion.



PRODUCT CODE: ULT34-1145  
Grille; Mesh Style; Without Emblem Cutout; Textured; Black; Steel; With 20 Inch Center Double Row Light Bar/ Two 6 Inch Single Row Outer Light Bars  
• A Form Fitted Mesh Grille With Laser Cut  
• 11 Gauge Steel Frame With The Light Housing Made Of 16 Gauge Steel



PRODUCT CODE: ULT21458  
Grille; Billet Series; Horizontal Bar Style; Without Emblem Cutout; Polished; Billet Aluminum  
• Horizontal And Vertical Styles  
• 6061/6063 Billet Aluminum  
• High Polished Finish



PRODUCT CODE: ULT6314581  
Grille; Torch; Mesh Style; With X Metal Emblem; With LED Lights; Black; Steel; With Wiring Harness And Chrome Stud  
• Exclusive X-Metal Chrome Studs And Badging  
• 12 Gauge Frame  
• High Efficiency Heat Dissipating Die-Cast Aluminum Housin  
• Spot Or Flood Combo Unbreakable Polycarbonate Lens  
• Formed Mild Steel Woven Wire Mesh



11 DODGE RAM 1500 - COUVRE CAISSES TONNEAU



PRODUCT CODE: ULT630299  
CYNC Latching System, Opening And Closing The Cover Is A Snap • Non-Lockable • Adjustable Catch Plate Allows For Mounting The System Close To The Tailgate • Sturdy Yet Flexible And Rugged Vinyl Cover • Black Finish • Rounded Corners And Beveled Edges Shed Water



PRODUCT CODE: ULT633299  
CYNC Latching System, Opening And Closing The Cover Is A Snap • Non-Lockable • Sturdy Yet Flexible Cross Weave Cover Material • Rounded Corners And Beveled Edges Shed Water • Adjustable Catch Plate Allows For Mounting The System Close To The Tailgate For Easy Access • Easy-Adjust Cover Buckles And Secondary Security Buckles Hold It Secure • Black Matte



PRODUCT CODE: ULT226223  
Automatic Latching Panels • Lockable Using Tailgate Handle Lock • Durable, Solid Core Panels With Aluminum Skins • 100 Percent Truck Bed Access • Weather Resistant • Premium UV Resistance, Won't Fade Or Chalk • Black Textured Finish



PRODUCT CODE: ULT14422  
Non-Lockable • Tarp Is Pre-Attached To Tail Rail For A Quick Open Or Close • Dependable Quality: Smooth, Sleek Design With No Snaps • Monster Bows: Spring Loaded For The Fastest On And Off Application. Bows Stay In Place While Driving And The Wide, Flat Design Allows For Maximum Strength



PRODUCT CODE: ULT2422  
Non-Lockable • Snaps Along Cab Rails For Quick And Easy Loading At The Front Of The Truck Bed • Solid Brake Frame: Heavy-Duty, Rich Black Anodized Rails And Bows Offer A Great, Solid Black Look • Bows Stay In Place While Driving And The Wide, Flat Design Allows For Maximum Strength • Engineered For All Climates



PRODUCT CODE: ULT94422  
Non-Lockable • Maxhinges: Built To Last: Ultra-Strong, Rugged, Double Pivot Design • EZ-Lock Rear Clamps • Engineered With Precision; 45 Degree Steel Corner Brackets, Commercial Grade Rails, And I-Beam Style “Monster Bows” • Premium Canvas Top • Seal Out Weather And Dust: WeatherTuff Seals • Black Finish



PRODUCT CODE: ULTUC3116  
Lockable With Bolt One-Key • Weather Resistant: Full Perimeter Sealing • The Tonal Cover Boasts A Rear Spoiler And Style Lines • The Lightest Hard Shell Tonneau Cover On The Market • Black Textured Finish





12 DODGE RAM 1500 - LEVELING KIT



Even out the stance of your truck or SUV with premium grade leveling kits. The ultimate suspension upgrade for your truck.

2” PRE-LOAD SPACER FRONT LEVELING KIT

Installation include  
PRODUCT CODE: ULT66-1920



- Fits RAM 1500 2WD/ 4WD 2019-2020
- Front pre-load spring spacer kit
- Crafted from CNC Machined billet aluminum
- Not for use on air-suspension equipped trucks
- Max tire: 285/65-20 on 20x9 +18

NOTE: Not for use on trucks that are factory pre-lifted/leveled or that have the “off-road package”. Check factory height prior to ordering or installing. Trucks with more than 22” of wheel hub to fender lip height may require less lift.

2” FRONT LEVELING KIT W/ TUBULAR CONTROL ARMS

Installation include  
PRODUCT CODE: ULT66-1921



NOTE: Not for use on trucks that are factory pre-lifted/leveled or that have the “off-road package”. Check factory height prior to ordering or installing. Trucks with more than 22” of wheel hub to fender lip height may require less lift.

- Fits RAM 1500 2WD/4WD 2019-2020
- Front strut extension leveling kit
- Includes strong tubular steel Control Arms
- Not for use on air-suspension equipped trucks
- CNC machined billet aluminum construction - bolt on
- Max tire: 285/65-20 on 20x9 +18



3.5” SST LIFT KIT

Installation include  
PRODUCT CODE: ULT69-1935

- Fits RAM 1500 2WD/4WD 2019-2020
- 3.5 inch SST Lift Kit
- Not for use on air-suspension equipped trucks
- CNC machined billet aluminum construction front spacers
- Fabricated steel rear spacers
- Includes heavy-duty control arms
- OEM Style Cast Blocks
- Solid Mount and even load distribution

NOTE: Not for use on trucks that are factory pre-lifted/leveled or that have the “off-road package”. Check factory height prior to ordering or installing. Trucks with more than 22” of wheel hub to fender lip height may require less lift.

ADMISSION D’AIR

A cold air intake system increase efficiency from 3 to 5 mpg, which can help you save considerably over time



PRODUCT CODE: ULT070 KN63-1571

AIR INTAKE RAM 1500 14-18



PRODUCT CODE: ULT63-1578

AIR INTAKE RAM 1500 2019



13 DODGE RAM 1500 - ATTELAGES DE REMORQUE



Take advantage of your RAM 1500 towing capacity with new hitches. A custom-fit RAM 1500 trailer hitch is the perfect solution for reliable towing of heavy loads.



PRODUCT CODE: ULT13419  
Installation Include  
Trailer Hitch Rear; Class III; 2 Inch Receiver; 6000 Pound Weight Carrying Capacity/ 600 Pound Tongue Weight; 10000 Pound Weight Distributing Capacity/ 1000 Pound Tongue Weight

- Uses all existing holes no drilling required
- Without Factory Installed Hitch



PRODUCT CODE: ULT58-81075H  
Installation Include  
Trailer Hitch Rear; Outlaw; Class IV; Round Tube Welded; 2 Inch Receiver; 10000 Pound Weight Carrying Capacity/ 1000 Pound Tongue Weight; Textured Black Steel; With Safety Chain Loops

- Must be used with Outlaw Bumper



PRODUCT CODE: ULT41913  
Installation Include  
Trailer Hitch Rear; Ultra Frame ®; Class V; Square Tube; 2 Inch Receiver; 15000 Pound Weight Carrying Capacity/ 1500 Pound Tongue Weight/ 17000 Pound Weight Distributing Capacity/ 1700 Pound Weight Distributing Tongue Weight

- Uses all existing holes no drilling required
- Requires temporary removal of bumper during installation



PRODUCT CODE: ULT15005  
Installation Include  
Trailer Hitch Rear; Class V; Square Tube; 2 Inch Receiver; 15000 Pound Weight Carrying Capacity/ 1700 Pound Tongue Weight; 17000 Pound Weight Distributing Capacity/ 1700 Pound Tongue Weight



PRODUCT CODE: ULT070 75662  
Installation Include  
Designed for customers with trucks, vans and sport utility vehicles. Rated at up to 8,000 lbs. Gross Trailer Weight (GTW) weight carrying (WC) and up to 12,000 lbs. Gross Trailer Weight GTW) with weight distributing (WC)

- 2” square receiver tube opening
- Black powder coat finish over A-coat



PRODUCT CODE: ULT070 D41948  
Installation Include  
designed for full size long wheelbase trucks, vans and utility vehicles with full frames and heavy-duty suspensions

- Strong, secure heavy-duty side bracket design
- Ideal for high tongue weight applications
- Solid All-Welded Construction for Maximum Strength and Safety
- E-Coat Base w/ Black Powder Coat Finish

CONTRÔLEURS DE FREINS ÉLECTRONIQUE



PRODUCT CODE: ULT070T90885

- For trailers with 2, 4, 6 or 8 brakes.
- Digital display depicts voltage delivery to trailer during braking
- No level adjustment necessary - it adjusts itself to varying terrain as you drive
- Great for backing into tough spots! Works proportionally in reverse with the ability to disable when not needed
- Produces stops that are in proportion to vehicles deceleration rate
- Continual diagnostics check for proper connection, shorted magnet conditions and much more
- “Boost” feature gives users the ability to apply more initial trailer braking power when towing heavier trailers





14 DODGE RAM 1500 - POWERSTEP (NERF BARS)



One of the best ways to upgrade your truck is to add nerf bars to your vehicle. Like any great truck accessory, truck steps and nerf bars both look great and functionally improve getting in and out of your rig.

PRODUCT CODE: ULTA1542S  
4" Oval Tube Side Steps; With Step Pads; 4 Inch Oval Straight; Polished; Stainless Steel; With Welded End Caps; Rocker Panel Mount

PRODUCT CODE: ULTA4015B  
4" Trapezoid Side Steps; With Step Pads; 4 Inch Trapezoidal Straight; Powder Coated; Titanium Black; Steel; With Plastic End Caps; Rocker Panel Mount

PRODUCT CODE: ULTA7081B  
5" Oval Bent Side Bars; With Step Pads; 5 Inch Oval Bent; Powder Coated; Black; Steel; With Welded End Caps; Rocker Panel Mount

PRODUCT CODE: ULTA7081S  
5" Oval Bent Side Bars; With Step Pads; 5 Inch Oval Bent; Polished; Stainless Steel; With Welded End Caps; Rocker Panel Mount

PRODUCT CODE: ULTA7082B  
5" Oval Straight Side Bars; With Step Pads; 5 Inch Oval Straight; Powder Coated; Black; Steel; With Welded End Caps; Rocker Panel Mount

PRODUCT CODE: ULT21-24085  
With Step Pads; 4 Inch Oval Bent; Powder Coated; Black; Steel; With Welded End Caps; Rocker Panel Mount

PRODUCT CODE: ULT22-5035  
With Step Pads; 4 Inch Oval Straight; Powder Coat-ed; Black; Steel; With Plastic End Caps; Mounting Bracket Required

PRODUCT CODE: ULT23-4085  
With Step Pads; 6 Inch Oval Straight; Polished; Stainless Steel; With Plastic End Caps; Mounting Bracket Required

PRODUCT CODE: ULTDZ16121  
With Step Pads; 6 Inch Oval Straight; Black Textured Powder Coated Steel; With Plastic End Caps; Mount-ing Bracket Required

PRODUCT CODE: ULTDZ16422  
With Step Pads; 6 Inch Oval Straight; Diamond Tread With Black Pads; Aluminum; With Plastic End Caps; Mounting Bracket Required

PRODUCT CODE: ULTDZ373251  
With Step Pads; 3 Inch Round Bent; Powder Coated; Black; Steel; Without End Caps; Rocker Panel Mount

PRODUCT CODE: ULTDZ373257  
With Step Pads; 4 Inch Oval Bent; Polished; Stainless Steel; Without End Caps; Rocker Panel Mount

PRODUCT CODE: ULTDZ66321  
With Drop Down Steps; Hexagonal Straight; Powder Coated; Silver; Aluminum; With Welded End Caps; Requires Mounting Bracket; Mulit Fit 86 Inch Length

PRODUCT CODE: ULT300069  
With Step Pads; Octagonal; Chrome; Silver; Alu-minum; With End Caps; Rocker Panel Mount; With OEM Style Plastic Bracket Covers



15 DODGE RAM 1500 - OPTIONS D'ÉCLAIRAGE



Improve the appearance and safety of your vehicle with custom tailored LED lighting options.



Feux à DEL Pour le Toit  
(Cab Lights)

Installation incluse



Phares DEL  
(Headlights)

Installation incluse



Lumière D'ambiance  
(Ambient Lighting)

Installation incluse

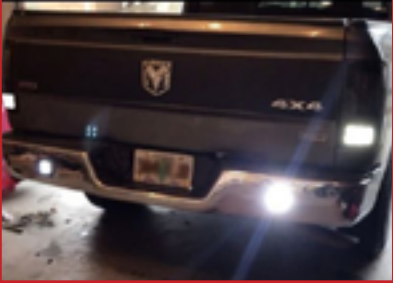


Lumière de Lit de Camion  
(Bed Lighting)

Installation incluse



Lumière D'urgence  
(Emergecy Lighting)



Lumière Extérieur  
Pare-chocs Arrière  
(Exterior Lighting  
Rear Bumper)

Installation incluse



Lumière Extérieur  
Pare-chocs avant  
(Exterior Lighting  
Front Bumper)

Installation incluse





16 DODGE RAM 1500 - RAMPES EN ALUMINIUM



Ultra-convenient way to directly enter or exit the bed with large loads or wheeled equipment.



PRODUCT CODE: ULT070RTX9041

RAMPE METAL PAIRE  
• Capacité 1400 lbs  
• 84" x 12"

COFFRES DE CAMION EN ALUMINIUM



PRODUCT CODE: ULT070DZ8170

A	B	C	D	E	F
69 3/4"	60 3/4"	20"	17 1/8"	12 1/8"	7 1/8"



PRODUCT CODE: ULT070DZ8370

A	B	C	D	E	F
69 3/4"	60 3/4"	20"	17 1/8"	12 1/8"	7 1/8"

RÉSERVOIRS DE TRANSFERT



PROD. CODE: ULT070DZ92647

Pour Diesel Seulement / Diesel Only  
L: 48" X W: 30 X H: 24"  
Capacité: 295L (78 gal.)

POMPE 12 VOLTS



PROD. CODE: ULT070DZ110000-107

Déclenchement Manuel / Manual Release  
Juqu' à 15 GPM. Tuyau de 10' x 3/4"  
inclus. Cordon d'alimentation de 15'

SYSTÈME DE RANGEMENT POUR LIT



PROD. CODE: ULTDR7

Bed Drawer; 2000 Pound Load Capacity Full Bed Deck Unit; 72.1 Inch Length x 18 Inch Width x 8.4 Inch Height; Two Drawers; Deck Has Four Storage Compartments



17 DODGE RAM 1500 - AUDIO UPGRADE



Unlock the power of your favorite music with a first-rate audio upgrade.

**ROCKFORD FOSGATE  
OEM AUDIO UPGRADE**

COMPONENT  
DOOR TWEETERS

COMPONENT  
DOOR TWEETERS

COMPONENT  
DOOR TWEETERS

COMPONENT  
DOOR TWEETERS

SUBWOOFER  
VOLUME CONTROL

**FACTORY RADIO**

**WIRING KIT  
& ADAPTOR**

8" SUBWOOFER  
& AMPLIFIER  
300 WATTS RMS

**ROCKFORD FOSGATE  
OEM SUBWOOFER  
UPGRADE**

COMPONENT  
DOOR TWEETERS

COMPONENT  
DOOR TWEETERS

COMPONENT  
DOOR TWEETERS

COMPONENT  
DOOR TWEETERS

SUBWOOFER  
VOLUME CONTROL

**FACTORY RADIO**

**WIRING KIT  
& ADAPTOR**

8" SUBWOOFER  
& AMPLIFIER  
300 WATTS RMS

**PREMIUM AUDIO**

BASS!

SUBWOOFER

TWEETERS

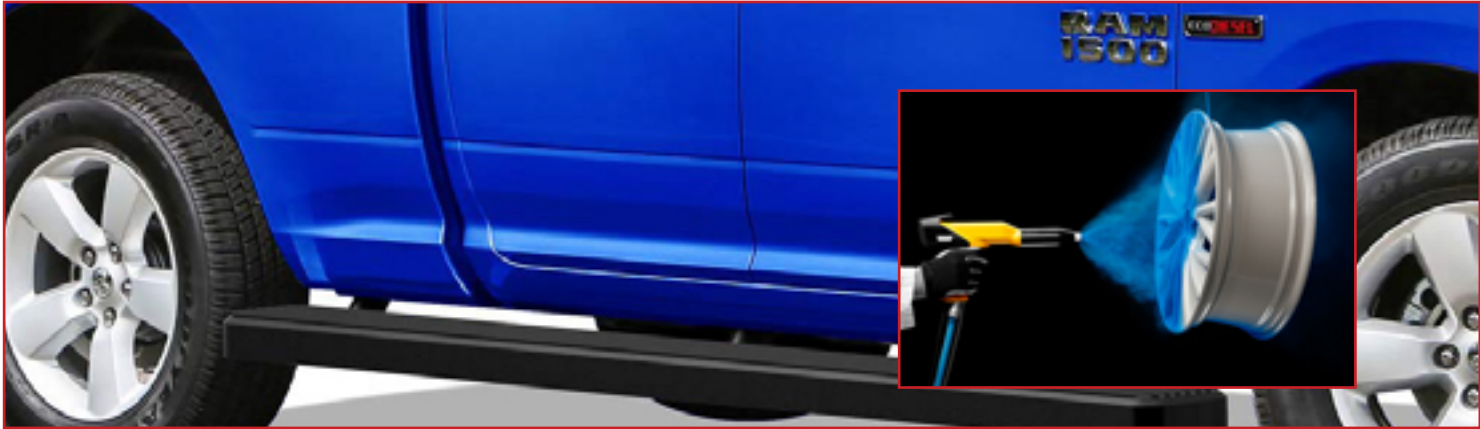
AMPLIFIER

SUBWOOFER CONTROL





18 DODGE RAM 1500 - POWDER COATING



Rims, Brake Calipers, Engine Parts and more, we provide state-of-the-art powder coating to enhance your truck’s appearance.



ROUES  
16” 20” 21” 22”



ÉTRIER DE FREIN



PIÈCES DE MOTEUR



PIÈCES DE MOTO



19 DODGE RAM 1500 - O.E.M POWERCHIPS ®



Safely experience dramatic performance gains in every day driving without voiding the warranty.

**O.E.M. Performance Remapping Program**  
REVERSED ENGINEERED TUNING®

The O.E.M. performance remapping program software is designed by a group of engineers that work at a major automobile manufacturer in Stuttgart Germany. They prepare software for the private racing community and select European car manufacturers. The principle process of using the car’s original software and reverse engineering its perimeters safely, allows the automobile to perform significantly better without voiding the warranty. All diagnostic settings and codes are kept intact while dramatic performance gains are experienced in every day driving. This process of enabling vehicles to run more efficiently at lower rpms results in less wear and tear and better fuel economy. This remapping process permits engines to run full strength at low rpms.

<b>Stage I 10% Boost</b>	<b>Stage II 15% Boost</b>
<i>Installation Include</i>	<i>Installation Include</i>



PORTES ÉLECTRIQUES  
*Installation Include*



VITRES ÉLECTRIQUES  
*Installation Include*



MIROIR CHAUFFANT  
*Installation Include*





20 DODGE RAM 1500 - OPTIONS INTÉRIEURES EN CUIR



Inviting and luxuriously soft to the touch, a custom leather trimmed interior provides an easy to clean and durable advantage to cloth.



VIS CODE: K487-100  
Black wrap, Barracuda charcoal insert, Ash contrast all stitch



VIS CODE: F190-115  
Lapis wrap, Lapis stitching



VIS CODE: K1409-224  
Coffee wrap, Ivory body, TekStitch Double Diamond insert, Ivory contrast all stitch



VIS CODE: K862-100  
Black wrap, Perf body, Cobalt wings, Cobalt contrast all stitch



VIS CODE: K163-100  
Black wrap, Barracuda red insert, Cardinal all stitch



VIS CODE: K1090-100  
Coffee wrap, Outlaw black combo, Perf wings, Black piping



Appelex pour application / Call for application

21 DODGE RAM 1500 - TAPIS ET ACCESSOIRES WEATHERTECH



Automotive accessories designed to keep the interior and exterior of your car protected.

3D FLOOR MATS



Three dimensions of vehicle protection

- Raised outer edge traps liquids, dirt and other messes
- Custom fit for your vehicle's make and model

FLOORLINER



Laser Measured for a Perfect Fit

- Most advanced concept in custom-fit floor protection
- Lines the front, back and sides of vehicle's footwell

ALL-WEATHER FLOOR MATS



Flexible Floor Mats for your Vehicle

- Engineered for an ideal fit
- Traps fluids and debris from vehicle flooring

BUMPSTEP®



Hitch Mounted Step and Bumper Protection

- Defends bumpers from rear end accidents, dents and scratches
- Used as a step to reach vehicle roof

HOOD PROTECTOR



Low Profile Aerodynamic Protection

- Custom-fit design
- Contour-fitting aerodynamic bug and debris shield

STONE & BUG DEFLECTOR



Heavy-Duty Protection for your Vehicle's Hood

- Custom-fit design
- Low-profile bug and rock shield

LAMPGUARD



Headlight Protection

- Vehicle-specific design
- Shields headlamps from scratches, cracks and road debris

MUDFLAPS



Laser Measured for a Perfect Fit

- Custom-fit design
- Protects fenders and exteriors from rocks, mud and road grime

PET ACCESSORIES

SEAT PROTECTOR



Seat Cover for your Vehicle

- Water repellent seat protector with non-slip underside
- Available for 1st, 2nd and 3rd row seating

DOOR PROTECTOR



Protect your vehicle's inside door panels from scuffs, scratches, dirt

- Heavy-duty, durable coated polyester fabric.
- Machine washable

PET BARRIER



Keeps Pets Secure in Vehicle Behind your 2nd or 3rd Row Seats

- Adjustable and expandable
- Fastens securely to interior - no tools or drilling required

PET RAMP



High-Traction Foldable Pet Ramp

- Portable heavy duty pet ramp for elevated vehicles
- Non-slip surface for added traction





22 DODGE RAM 1500 - TREUILS DE REMORQUAGE



Featuring waterproof construction for optimal performance in all conditions these winches will help you go prepared for whatever road lies ahead.



**PRODUCT CODE:** ULT26502  
Winch; M8000 Series; Vehicle Mounted; Vehicle Recovery Winch; 12 Volt Electric; 8000 Pound Line Pull Capacity; 100 Foot Wire Rope; Roller Fairlead; Wired Remote; Planetary Gear Drive; Requires Winch Carrier or Winch Mount  
• Fits 2018 and prior models of RAM 1500 / Fits 2019-2020 models of RAM 1500 Classic  
• May require additional products



**PRODUCT CODE:** ULT87310  
Winch; 9.5xp Series; Vehicle Mounted; Vehicle Recovery Winch; 12 Volt Electric; 9500 Pound Line Pull Capacity; 100 Foot Synthetic Rope; Hawse Fairlead; Wired Remote; Planetary Gear Drive; Requires Winch Carrier or Winch Mount  
• Fits 2018 and prior models of RAM 1500 / Fits 2019-2020 models of RAM 1500 Classic  
• May require additional products



**PRODUCT CODE:** ULT88980  
Winch; ZEON ® 8; Vehicle Mounted; Vehicle Recovery Winch; 12 Volt Electric; 8000 Pound Line Pull Capacity; 100 Foot Wire Rope; Roller Fairlead; Wired Remote; Convertible Control Pack; Planetary Gear Drive; Requires Winch Carrier or Winch Mount  
• Fits 2018 and prior models of RAM 1500 / Fits 2019-2020 models of RAM 1500 Classic  
• May require additional products



**PRODUCT CODE:** ULT97550  
Winch; 9.5cti Series; Vehicle Mounted; Vehicle Recovery Winch; 12 Volt Electric; 9500 Pound Line Pull Capacity; 125 Foot Wire Rope; Roller Fairlead; Wired Remote; Planetary Gear Drive; Requires Winch Carrier or Winch Mount  
• Fits 2018 and prior models of RAM 1500 / Fits 2019-2020 models of RAM 1500 Classic  
• May require additional products



**PRODUCT CODE:** ULT90665  
Winch; ZEON ® 10; Vehicle Mounted; Vehicle Recovery Winch; 24 Volt Electric; 10000 Pound Line Pull Capacity; Without Rope; Roller Fairlead; Wired Remote; Convertible Control Pack; Planetary Gear Drive; Requires Winch Carrier or Winch Mount  
• Fits 2018 and prior models of RAM 1500 / Fits 2019-2020 models of RAM 1500 Classic  
• May require additional products



**PRODUCT CODE:** ULT95960  
Winch; ZEON ® 12-S Platinum; Vehicle Mounted; Vehicle Recovery Winch; 12 Volt Electric; Two 16 amp Accessory Ports; 12000 Pound Line Pull Capacity; 80 Foot Spydura Synthetic Rope; Hawse Fairlead; Wireless Remote; Convertible Control Pack; Planetary Gear Drive; Thermal Feedback; Vehicle Battery Feedback. Requires Winch Carrier or Winch Mount  
• Fits 2018 and prior models of RAM 1500 / Fits 2019-2020 models of RAM 1500 Classic  
• May require additional products



**PRODUCT CODE:** ULT47-1235  
Winch; ATV 4 Way Roller Fairlead; Vehicle Mounted; Vehicle Recovery Winch; 12 Volt Electric; 3500 Pound Line Pull Capacity; 31 Foot Galvanized Aircraft Steel Cable; Roller Fairlead; Handlebar Mounted Switching; Winch Mount Required  
• Fits 2018 and prior models of RAM 1500 / Fits 2019-2020 models of RAM 1500 Classic  
• May require additional products



23 DODGE RAM 1500 - AIR DESIGN OFF-ROAD BODYKIT



**BUMPER GUARD**  
Finish: Satin  
Color: Black / Silver

**PRODUCT CODE:** ULTCH06A05

- Manufactured Of High Performance Huntsman™ Polyurethane Polymer
- Surface Perfectly Coated With German Automotive Mankiewicz™ Satin Black OEM Paint
- Stunning Premium Front End Upgrade
- Heavy Duty, High Impact Front Bumper Guards Fit Like A Glove



**DOOR ROCKER PANELS**  
Finish: Satin  
Color: Black

**PRODUCT CODE:** ULTCH06A06

- Manufactured Of High Performance Huntsman™ Flexible, High Impact Polyurethane
- Top Coated With German Automotive Mickiewicz™ Satin Black Class A, OEM Paint Finish
- Highly Resistant Yet Very Light Weight



**HOOD SCOOP**  
Finish: Satin  
Color: Black

**PRODUCT CODE:** ULTCH06A26

- Manufactured With Overmolding Technology That Encapsulates High Impact Multilayer Senoplast With Elastomeric Polyurethane
- Polyurethane Contours To The Hood Surface For A Perfect Fit





24 DODGE RAM 1500 - AIR DESIGN OFF-ROAD BODYKIT (CONT.)



TAILGATE APPLIQUÉ

Finish: Satin  
Color: Black  
Installation Type: Recessed

PRODUCT CODE: ULTCH06A17

- Molded Using Austrian Finest Multilayer Senoplast ABS Plastic Technology
- Additional UV Protection With A German Automotive Mankiewicz Satin Black OEM Paint
- Perfect Fit And No Drilling At All



TAILGATE SPOILER

Finish: Satin  
Color: Black

PRODUCT CODE: ULTCH06A16

- Improved Aerodynamics
- Made Of High Impact Resistant Austrian Formulated Multilayer Satin Black Senoplast™ Polymer, And Top Coated With German Satin Black Paint For Extra UV Protection



FLOOR LINERS SET

Color: Black  
Number Of Pieces: 3

PRODUCT CODE: ULTCH06A21

- Designed To Catch Debris
- Quick And Easy To Clean
- Molded Surface Patterns
- Features Antiskid, Suitable For Mud And Snow
- Manufactured With High Performance Soft Touch Heavy Duty TPR Engineering Material For Superior Strength And Durability



FENDER FLARES SET

Color: Black  
Quantity: Set Of 4  
Included: Mounting Hardware

PRODUCT CODE: ULTCH06A11  
>dc1249 Installation incluse

- Features A Mechanical Fixation To The Body Line, To Eliminate All Vibration And Paint Damage
- Advanced Aerodynamic Mud Flap Integrated
- Parts Are Molded Using High Tech Multilayer Black ABS Senosan Polymer And Top Coated On Their Surface For Extra UV Protection

25 DODGE RAM 1500 - APERÇU DES PRODUIT PREMIUM



Front LD Bumper

PRODUCT CODE: ULTFLDB008TI

With Light Cutouts  
Lights - Sold Separately



Rear LD Bumper

PRODUCT CODE: ULTRLDB001TI

With Light Cutouts  
Lights - Sold Separately



Grille Guard - Gloss Black 1.5"

PRODUCT CODE: ULTE0036B



Grille Guard - Polished Stainless Steel 1.5"

PRODUCT CODE: ULTE0036S



26 DODGE RAM 1500 - APERÇU DES PRODUIT PREMIUM



Round Bull Bar - Black 3.5"  
PRODUCT CODE: ULTB1520B



Round Bull Bar (w/20" LED Light) - Black Titanium 3.5"  
PRODUCT CODE: ULTB1612B \*  
\*combined w/ prod. code ULT1320151



Round Bull Bar - Stainless Steel 3.5"  
PRODUCT CODE: ULTB1520S



Round Bull Bar (w/20" LED Light) - Stainless Steel 3.5"  
PRODUCT CODE: ULTB1520S  
\*combined w/ prod. code ULT1320151

27 DODGE RAM 1500 - APERÇU DES PRODUIT PREMIUM



Running Board - Black  
PRODUCT CODE: ULTRBW14B



3" Round Tube Side Step - Black  
PRODUCT CODE: ULTA0053B



4" Oval Bent Tube Side Step - Black  
PRODUCT CODE: ULTA1012B



4" Oval Straight Tube Side Step - Black  
PRODUCT CODE: ULTA1542B



5" Oval Bent Tube Side Step - Black  
PRODUCT CODE: ULTA7081B



5" Oval Straight Tube Side Step - Black  
PRODUCT CODE: ULTA7082B



6" Oval Straight Tube Side Step - Black  
PRODUCT CODE: ULTA8249B



3" Round Tube Side Step - **Stainless Steel**  
PRODUCT CODE: ULTA0053S



4" Oval Bent Tube Side Step - **Stainless Steel**  
PRODUCT CODE: ULTA1012S



4" Oval Straight Tube Side Step - **Stainless Steel**  
PRODUCT CODE: ULTA1542S



5" Oval Bent Tube Side Step - **Stainless Steel**  
PRODUCT CODE: ULTA7081S



5" Oval Strght. Tube Side Step - **Stainless Steel**  
PRODUCT CODE: ULTA7082S



6" Oval Strght. Tube Side Step - **Stainless Steel**  
PRODUCT CODE: ULTA8249S



28 DODGE RAM 1500 - APERÇU DES PRODUIT PREMIUM



AVANT



APRÈS

3.5" Front 2" Rear Lift\*

PRODUCT CODE: ULTD35SL1

*\*ALSO AVAILABLE 3" FRONT, 1" REAR*  
*\*\*ALIGNMENT \$125*



Smooth Fender Flares - Black

PRODUCT CODE: ULTPFFD3005S



Tape-On Vent Visors

PRODUCT CODE: ULT4806H

29 DODGE RAM 1500 - APERÇU DES PRODUIT PREMIUM



TRANSFER TANK

95gal; L-Shape

59-1/2"L x 31"W X 24"H

Polished; Lockable

PRODUCT CODE: ULT211101



2 LID/Gullwing - Polished

72"L x 19-1/4"W x 13-1/2"H; 9.0cuft.

PRODUCT CODE: ULT140721



SIDE MOUNT - Polished

60"L x 11-1/4"W x 11"H; 3.7cuft.

PRODUCT CODE: ULT160601



CHEST STYLE - Angled/Polished

54"L x 19-7/8"W x 17-1/8"H; 13.5cuft

PRODUCT CODE: ULT150581



FENDER WELL BOX - Polished

48"L x 8"W x 18"H; 3.9cuft

PRODUCT CODE: ULT180481



TRAIL LOCK LOW PRO - Black

72"L x 19-1/4"W X 13-1/2"H

PRODUCT CODE: ULT120693C



30 DODGE RAM 1500 - APERÇU DES PRODUIT PREMIUM



Helix Retractable  
Tonneau Cover

PRODUCT CODE: ULTTFX25223



Soft Tri-Fold Tonneau Cover  
PRODUCT CODE: ULTTFX2009



Soft Roll-Up Velcro Tonneau Cover  
PRODUCT CODE: ULTTFX2207



Premium Flush Hard Tri-Fold Tonneau Cover  
PRODUCT CODE: ULTTFX2704



Standard Flush Hard Tri-Fold Low Profile  
Tonneau Cover  
PRODUCT CODE: ULTTFX2524



31 DODGE RAM 1500 - PRODUITS FAB FOURS



BLACK STEEL ELITE FRONT BUMPER

Finish: 2 Stage Black Powder Coat  
Materials: 12 Gauge US Steel Construction

PRODUCT CODE: ULTDR13-R2961-1 (NO GUARD)  
PRODUCT CODE: ULTDR13-R2962-1 (PRE-RUNNER GUARD)  
PRODUCT CODE: ULTDR13-R2960-1 (FULL GUARD)

- Unique design combines ranch bumper design with smooth plate look
- No grill mesh
- Premium powder coat
- Includes tow hooks

*Does not work with REBEL, EXPRESS OR SPORT models*



GRUMPER TRUCK BUMPER

Finish: 2 Stage Black Powder Coat  
Materials: 11 ga. U.S. Steel Construction & 3/16" Steel  
Winch Mount  
PRODUCT CODE: ULTGR4200-1

- Combines both Grille and Bumper
- Winch ready for Warn Zeon 12 or Lower
- Fully Customizable – removable inserts for different color options
- Side mounting slots and tabs for various light options (lights not included)
- Provides far more tire clearance
- Lower cutout for increased airflow

*Does not work with REBEL, EXPRESS OR SPORT models*



MATRIX FRONT BUMPER

Finish: 2 Stage Black Powder Coat  
Materials: 3/16" Plate Steel Construction

PRODUCT CODE: ULTDR19-X4251-1 (NO GUARD)  
PRODUCT CODE: ULTDR19-X4252-1 (PRE-RUNNER GUARD)

- Winch ready for Warn Zeon 12 or Lower
- Integrated D-Ring Mounts
- Customizable – Removable light inserts for different color options
- Center mount accommodates a 30" light bar (not included)
- Side mounting slots and tabs for various light options (lights not included)
- Provides far more tire clearance
- Lower cutout for increased airflow

*Does not work with REBEL, EXPRESS OR SPORT models*





32 DODGE RAM 1500 - PRODUITS FAB FOURS



PREMIUM FRONT BUMPER

Finish: 2 Stage Black Powder Coat  
Materials: 3/16" US Steel  
PRODUCT CODE: ULTDR13-H2951-1 (NO GUARD)

PRODUCT CODE: ULTDR13-H2952-1 (PRE-RUNNER GUARD)  
PRODUCT CODE: ULTDR13-H2950-1 (FULL GUARD)

- Winch Ready – Accepts up to 12,000 lb. winches or smaller
- 1" D-Ring mounts
- 2-piece mounting system with adjustability to allow a "custom" fit
- 90mm fog and 60mm turn indicator lights are included FREE with the bumper

*Does not work with REBEL model*



VENGEANCE FRONT BUMPER

Finish: 2 Stage Black Powder Coat  
Materials: 11 gauge US Steel

PRODUCT CODE: ULTDR19-D4251-1 (NO GUARD)  
PRODUCT CODE: ULTDR19-D4252-1 (PRE-RUNNER GUARD)

- Complete bolt-on front bumper w/ provided brackets that tie directly to the frame
- Sensor compatible
- Allows for an integrated 20inch Rigid Industries LED light bar in the center (light bar not included)
- Mounting options on each side for (2) 3x3 Dually lights to give you maximum LED light coverage
- Sensors optimized for vehicles with suspension lifts
- Provides far more tire clearance
- Lower cutout for increased airflow

*Does not work with REBEL, EXPRESS OR SPORT models*

33 DODGE RAM 1500 - PRODUITS FAB FOURS



BLACK STEEL ELITE REAR BUMPER

Finish: 2 Stage Black Powder Coat  
Materials: 12 gauge US Steel

PRODUCT CODE: ULTDR10-U2950-1

- Ranch Style Bumper w/smooth matte black finish
- Sensor Compatible \*when needed\*
- Retain OEM receiver hitch and wiring locations
- Matched to the body lines of each model truck



PREMIUM REAR BUMPER

Finish: 2 Stage Black Powder Coat  
Materials: 3/16" US Steel

PRODUCT CODE: ULTDR19-W4251-1 (SENSOR REAR)  
PRODUCT CODE: ULTDR09-W2950-1 (NON-SENSOR REAR)

- Integrated Steps on either side of the Tailgate
- Retain OEM Receiver Hitch and Wiring Locations
- 3/4" D-Ring Recovery Points



VENGEANCE REAR BUMPER

Finish: 2 Stage Black Powder Coat  
Materials: 11 gauge US Steel

PRODUCT CODE: ULTDR19-E4251-1

- Two front-side openings allow light options; (4) 3" X 3" Dually lights or (2) 6" light bars (lights are not included)
- Sensor compatible
- Retain OEM Receiver Hitch and Wiring Locations  
*DR19-E4251-1 for the 2019+ Dodge 1500 only works with 6" Single Row Light bars*



34 DODGE RAM 1500 - PRODUITS FAB FOURS



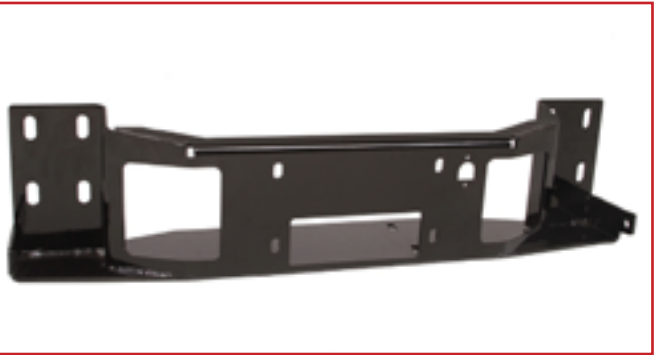
**BLACK STEEL ELITE HI-FLOW LOWER GUARD**  
Finish: Powder Coated Matte Black  
Application: Full & Half-Ton trucks  
  
PRODUCT CODE: ULTRGAIR-1 (HALF-TON)  
PRODUCT CODE: ULTQGAIR-1 (FULL SIZE)

- Engineered to fit and complement your Black Steel Elite Bumper



**BLACK STEEL ELITE LIGHT LOWER GUARD**  
Finish: Powder Coated Matte Black  
Application: Full & Half-Ton trucks  
  
PRODUCT CODE: ULTRLITE-1 (HALF-TON)  
PRODUCT CODE: ULTQLITE-1 (FULL SIZE)

- Engineered to fit and complement your Black Steel Elite Bumper



**BLACK STEEL ELITE WINCH TRAY**  
Finish: Powder Coated Matte Black Application: Full & Half-Ton trucks  
  
PRODUCT CODE: ULTRWINCH-1 (HALF-TON)  
*Holds up to a 12,000 lb winch*  
  
PRODUCT CODE: ULTQWINCH-1 (FULL SIZE)  
*Holds up to a 16,500 lb winch*

- Engineered to fit and complement your Black Steel Elite Bumper



**WINCH MOUNT**  
Finish: 2 Stage Black Powder Coat  
Materials: 3/16" US Steel  
  
PRODUCT CODE: ULTDR13-N3550-1  
  

- One piece Winch Mount
- Fully Welded
- Slips through the factory tow hook slots straight to the frame
- Small Frame holds winches 12,000 lbs or smaller

*Not sensor compatible*  
*Does not work with Rebel, Express or Sport Model*



35 DODGE RAM 1500 - PRODUITS FAB FOURS



**ROOF RACK**  
Finish: 2 Stage Matte Black Powder Coat  
Materials: 12 GA Steel Construction  
  
PRODUCT CODE: ULTRR48-1 (48")  
PRODUCT CODE: ULTRR60-1 (60")  
PRODUCT CODE: ULTRR72-1 (72")

- Accommodates (4) 3" X 3" Square LED Lights
- Provides Tie-downs
- Modular design allows mounting wherever necessary
- Integrated Zip-Tie holes for wiring
- Weight Capacity Rated for 60lbs
- Optional: (2) 50" Light Bars for the front and (2) 50" Light Bars for the back *Lights are Not Included*
- Optional: 4 Light Roof Rack Face Plate (RR14-1). Houses (4) 3" X 3" Dually Lights. *Lights are Not Included*



**ROOF RACK – 4 LIGHT FACE PLATE**  
Finish: 2 Stage Matte Black Powder Coat  
Materials: 12 GA Steel Construction  
  
PRODUCT CODE: ULTRR14-1

- 48", 60", & 72" Length options
- Accommodates (4) 2x2 Square LED Lights
- Provides Tie-downs
- Modular design allows mounting wherever necessary
- Weight Capacity Rated for 60lbs
- Optional: (2) 50" Light Bars for the front and (2) 50" Light Bars for the back *Lights are Not Included*
- Optional: 4 Light Roof Rack Face Plate (RR14-1). Houses (4) 3" X 3" Dually Lights. *Lights are Not Included*

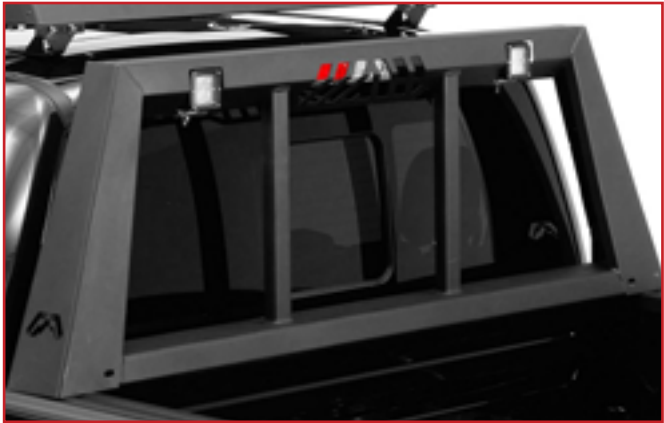


**ROOF RACK – SOFT ROOF HELPER KIT**  
Finish: Powder Coated Matte Black  
Application: Mounting Kit for Fab Fours Roof Racks  
  
PRODUCT CODE: ULTRR01-1





36 DODGE RAM 1500 - PRODUITS FAB FOURS



HEADACHE RACK

Finish: Powder Coated Matte Black  
Materials: 12 Gauge US Steel

PRODUCT CODE: ULTHR2013-1

- Signature Knife Edge Design
  - Rear Brake Light Visibility Vent
  - Accepts RIGID INDUSTRIES SURFACE MOUNT 3X3 Dually Lights
  - Optional – Modifier for added support, strength and styling
- Works with 2013-2016 models*  
*See Prod. Code ULTHR2002-1 for 2003-2012 models (same cost)*



HEADACHE RACK MODIFIER

Finish: Powder Coated Matte Black  
Materials: 12 Gauge US Steel

PRODUCT CODE: ULTHRM01-1

- Signature Knife Edge Design
- Modifier for added support, strength and styling



VICOWL

Finish: 2 Stage Black Powder Coat  
Materials: 11 Gauge US Steel

PRODUCT CODE: ULTV4200-1

- Combines Roof Visor and Cowl
- Added Windshield Protection
- Retains Factory Antenna



TRUCK VICOWL INSERTS

Finish: 2 Stage Black Powder Coat  
Materials: 11 Gauge US Steel

PRODUCT CODE: ULTV4102-1 (4 Light Insert)  
PRODUCT CODE: ULTV4101-1 (20" Light Bar Insert)

- Works with all Truck ViCowl's



37 DODGE RAM 1500 - PRODUITS FAB FOURS



CENTER LIGHT BOX COVER

PRODUCT CODE: M2450-1

- Center Light Box Insert for the Front Vengeance Series Bumpers



SIDE STEPS

Finish: 2 Stage Black Powder Coat  
Materials: 3" Tube/Stomp Pad: 13 gauge steel

PRODUCT CODE: ULTJ1024 (Crew Cab Length 4)

- Fully formed stamped steps
- 10" LARGE full-width stomp pad
- Cab Length
- Patented Design



KYMERA M/T 40 INCH TIRE

Tire size: 40x15.50R24  
Tread: Directional Mud Terrain

PRODUCT CODE: ULT40-155024FABRT

- Aggressive Tread Pattern
  - Ultimate traction off-road
  - Directional center tread for smooth on-road performance
  - F- Rated
  - Load capacity 80 psi
- Available in a 40"x15.5"only*







ROUES DE CAMIONS  
**RAM 1500**

**22.167**

Satin Noir / Satin Black  
Satin Noir - Visage usiné  
Satin Black- Mach. Face

**18"**  
Trous/Holes: 6



**22.176**

Noir lustré / Gloss Black  
Noir lustré - Rebord usiné  
Gloss Black - Milled edge

**20", 22"**  
Trous/Holes: 6



 **INDIQUE L'HIVER APPROUVÉ**



ROUES DE CAMIONS  
**RAM 1500**

**22.216**

Noir lustré/Gloss Black  
**20"**  
Trous/Holes: 6



**22.270**

Noir lustré/Gloss Black  
**20"**  
Trous/Holes: 6



**22.271**

Noir lustré/Gloss Black  
**20", 22"**  
Trous/Holes: 6



 **INDIQUE L'HIVER APPROUVÉ**





ROUES DE CAMIONS  
**RAM 1500**



**22.303**

Noir lustré/Gloss Black  
**20", 22"**  
Trous/Holes: 6



**22.326**

Noir lustré/Gloss Black  
**20"**  
Trous/Holes: 6



**22.324**

Noir lustré/Gloss Black  
**18"**  
Trous/Holes: 6



INDIQUE L'HIVER APPROUVÉ



ROUES DE CAMIONS  
**RAM 1500**



**22.328**

Noir lustré/Gloss Black  
**20", 22"**  
Trous/Holes: 6



**22.330**

Noir lustré/Gloss Black  
**22"**  
Trous/Holes: 6



**22.331**

Noir lustré/Gloss Black  
**22"**  
Trous/Holes: 6



INDIQUE L'HIVER APPROUVÉ





# ROUES DE CAMIONS RAM 1500



**22.352**  
Satin noir/Satin Black  
**22"**  
Trous/Holes: 6



**22.354**  
Noir lustré - Visage usiné  
Gloss Black - Mach. Face  
DURACOAT  
**20", 22"**  
Trous/Holes: 6



**22.353**  
Noir lustré/Gloss Black  
**18", 20"**  
Trous/Holes: 6



Argent/Silver  
**20"**  
Trous/Holes: 6



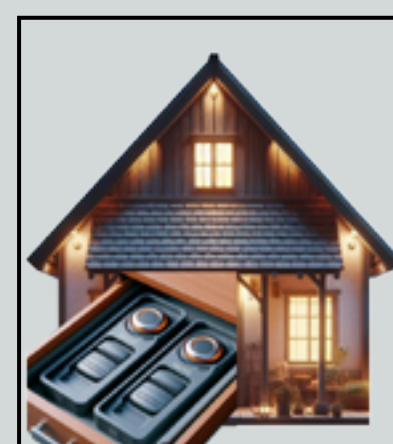
**INDIQUE L'HIVER APPROUVÉ**

# ByLaw<sup>®</sup> **ENFORCER<sup>®</sup>**

**Système Antivol / Anti-Theft System**



- Empêche la duplication des clés
- Empêche les voleurs avec des scanners d'ordinateur
- Aide à prévenir le vol de voiture par voie électronique



**Activeurs conservés à la maison.**

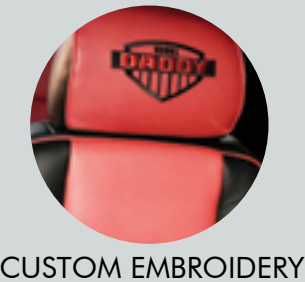
**Jamais avec vous.**

*\*À titre d'illustration uniquement*





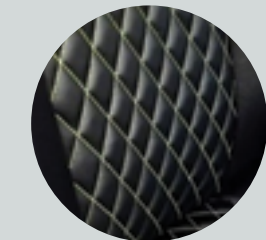
INTÉRIEURS EN CUIR



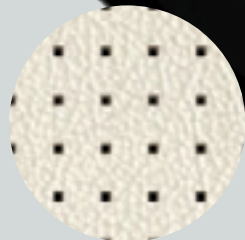
CUSTOM EMBROIDERY



DOUBLE DIAMOND STITCH



SINGLE DIAMOND STITCH



BARRACUDA PERFORATED DUO-TONE



6TH MIDDLE SUV SEAT  
PERFORATION  
2 TONE COLOR  
PIPING  
COLOR STITCH  
DIAMOND STITCH

- 1 ROW INTERIOR
- 2 ROW INTERIOR
- 3 ROW INTERIOR

KATZKIN SYSTÈME AUDIO PREMIUM



OPTIONS DE CUIR SÉLECTIONNÉES

- Intérieur cuir
- Deuxième couleur
- Perforation
- Piping couleur
- Couture couleur
- Suede
- Couture Diamant
- Pr. Logo broderie
- 6 iem Siège
- Siège ventilé 6 temp
- Siège chauffant avant
- Pr. Siège chauffant arrière
- Cuir Italien
- Support lombaire digital
- Support lombaire orthopédique
- Neck-Warmer 6 temperature cabriolet
- Siège électrique 4 position
- 7 Passages

ROUES POWDERCOAT NOIR LUSTRÉ  
GLOSS BLACK POWDERCOAT WHEELS



\$149  
CHAQUE

DAN  
(514) 592-0005

GOLD OPTION  
199\$  
CHAQUE

Ultracar Performance Inc. 1254 boul. Marcel-Laurin, Saint Laurent, Montréal, QC H4R 1J7  
www.ultracar.com