



# DOUBLE E COMPANY

319 Manley St., West Bridgewater, MA 02379 USA  
 (508)588-8099 doublee@doubleeusa.com

# BOWED ROLLERS

[www.doubleeusa.com](http://www.doubleeusa.com)



Bowed rollers, or spreader rollers, are used in the paper, film, foil, and textile industries to spread the web material uniformly in order to eliminate creases or wrinkles. In slitting operations, these rollers are used to prevent interweaving of material.

The standard **fixed bow model** with rubber cover is suitable for many applications, but **variable bow and other models are also available**. With the application information that you provide on the back of this sheet, we will specify the spreader roller that is right for you.

*“Flange Mount” design shown here. “Foot Mount” models also available.*

## Standard Bowed Roller Dimensions

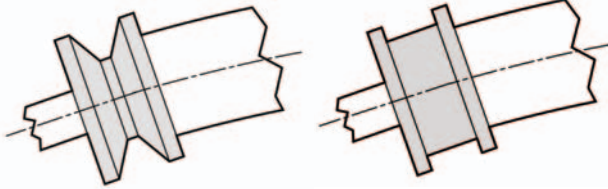
Model	Nominal Body Diameter	Minimum Body Length	Maximum Body Length
300	3" / 75 mm	20" [500 mm]	47" [1200 mm]
350	3.5" / 90 mm	20" [500 mm]	63" [1600 mm]
400	4" / 100 mm	32" [800 mm]	98" [2500 mm]
500	5" / 125 mm	47" [1200 mm]	126" [3200 mm]
600	6" / 150 mm	63" [1600 mm]	157" [4000 mm]

*Other standard and custom sizes also available.*

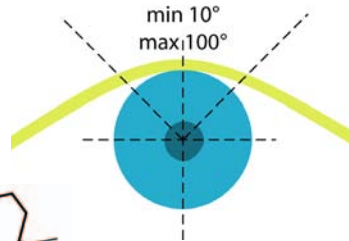
## Available Belt-Driven Engagements

V Belt

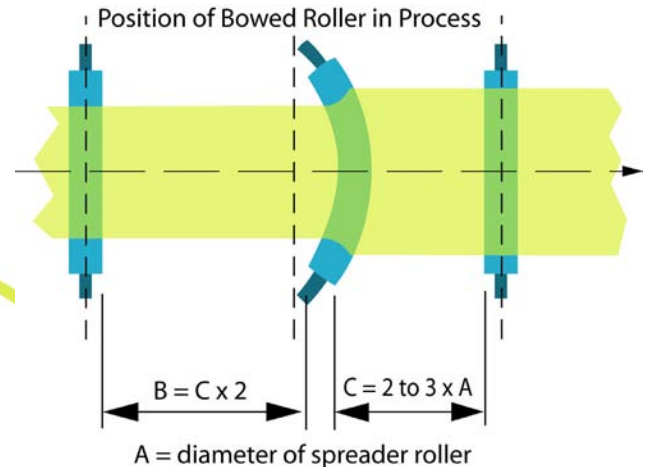
Flat Belt



Wrap Angle  
min 10°  
max 100°

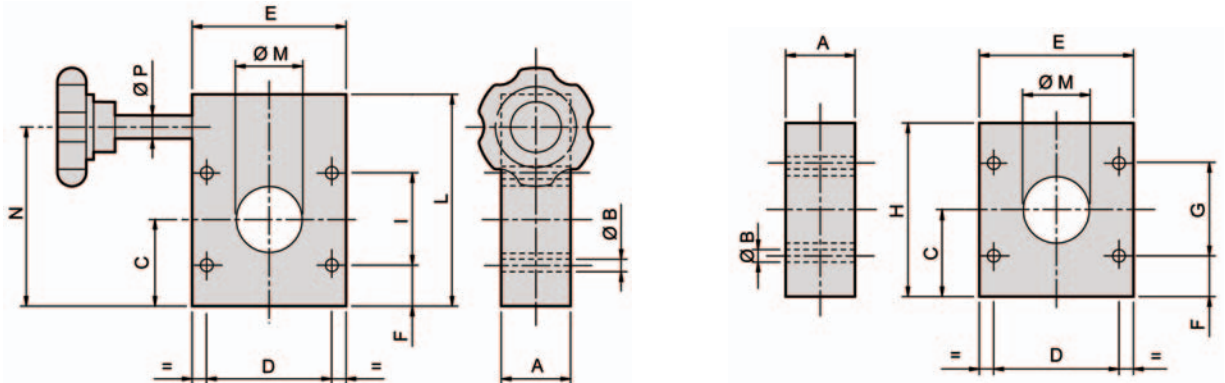


## Optimum Spreading Conditions



## Standard Mounting Flange Dimensions

*Other standard and custom sizes also available.*

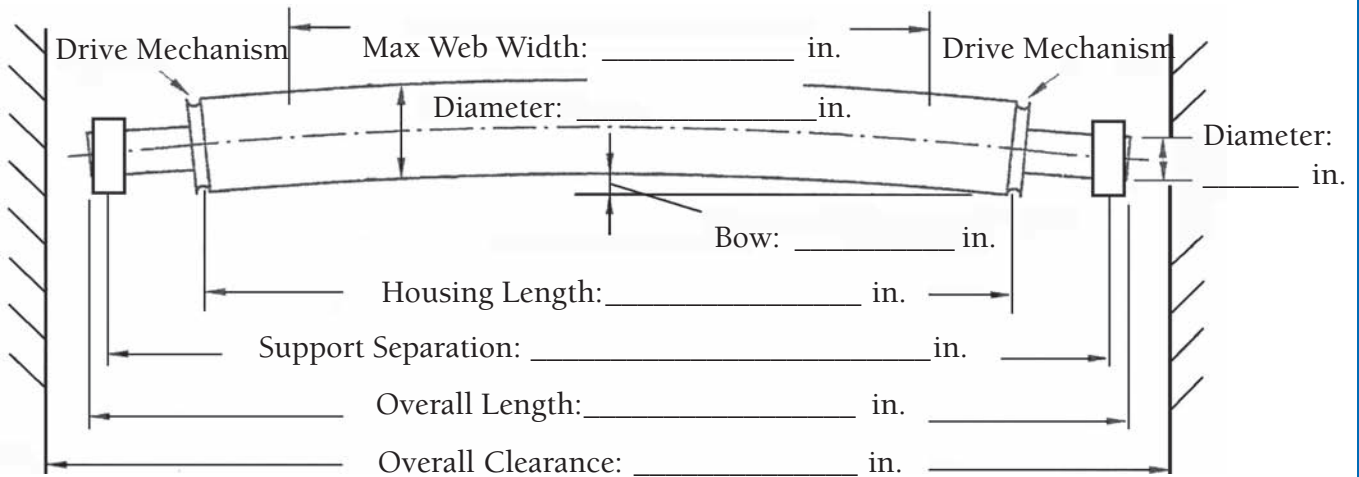


Model	A	B	C	D	E	F	G	H	I	L	M	N	P
300	1.42 [36]	.28 [7]	1.57 [40]	2.17 [55]	2.76 [70]	.79 [20]	1.57 [40]	3.15 [80]	1.57 [40]	3.94 [100]	.98-1.18 [25-30]	2.87 [73]	.47 [12]
350	1.42 [36]	.28 [7]	1.77 [45]	2.56 [65]	3.15 [80]	.79 [20]	1.97 [50]	3.54 [90]	1.97 [50]	4.33 [110]	1.18-1.38 [30-35]	3.27 [83]	.47 [12]
400	2.36 [60]	M8	2.72 [69]	4.13 [105]	4.72 [120]	1.83 [46.5]	1.77 [45]	5.43 [138]	1.77 [45]	5.91 [150]	1.57-1.77 [40-45]	4.57 [116]	.79 [20]
500	2.36 [60]	M8	2.72 [69]	4.13 [105]	4.72 [120]	1.83 [46.5]	1.77 [45]	5.43 [138]	1.77 [45]	5.91 [150]	1.57-1.77 [40-45]	4.57 [116]	.79 [20]
600	2.36 [60]	M8	2.72 [69]	4.13 [105]	4.72 [120]	1.24 [31.5]	2.66 [67.5]	5.43 [138]	2.66 [67.5]	5.91 [150]	1.97 [50]	4.80 [122]	.79 [20]

# BOWED ROLLER SPECIFICATIONS



Company Name: \_\_\_\_\_ Date: \_\_\_\_\_  
 Name: \_\_\_\_\_ Title: \_\_\_\_\_  
 Address: \_\_\_\_\_  
 City, State, Postal Code, Country: \_\_\_\_\_  
 Telephone: \_\_\_\_\_ Fax: \_\_\_\_\_ e-mail: \_\_\_\_\_



Type of Machine: \_\_\_\_\_  
 OEM: \_\_\_\_\_  
 Model: \_\_\_\_\_  
 Location of Bowed Roller (where in the process)?:  
 \_\_\_\_\_  
 \_\_\_\_\_

Max. Web Speed: \_\_\_\_\_ fpm  
 Average Web Speed: \_\_\_\_\_ fpm  
 Web Material: \_\_\_\_\_  
 Web Thickness: \_\_\_\_\_  
 Web Tension: \_\_\_\_\_ pli  
 Operating Temperature: \_\_\_\_\_ °F

Desired Bow Type: Fixed (Std.)  Variable   
 Desired Roller Cover Material:  
 Standard Rubber  Other   
 If Other, please give details: \_\_\_\_\_

Mounting: Foot  Flange   
 Driven? Yes  No   
 If Yes, Flat Belt  V Belt  Other   
 If Other, please give details: \_\_\_\_\_

Application Notes (including presence of water, chemicals, solvents, grease, etc.): \_\_\_\_\_  
 \_\_\_\_\_



**DOUBLE E COMPANY, INC.**

319 Manley Street, West Bridgewater, MA 02379 USA  
 Tel:(508)588-8099 Fax:(508)580-2915 email: doublee@doubleeusa.com

[www.doubleeusa.com](http://www.doubleeusa.com)