

Joel Latham
806 Oak Shadows Court
Mansfield, Texas 76063
U.S.A.
Cell: 817-371-4340
E-Mail: latham@highmountainhunts.com
Web address:
www.highmountainhunts.com

EUROPE *

sd

European Fallow Deer \$ 5,100

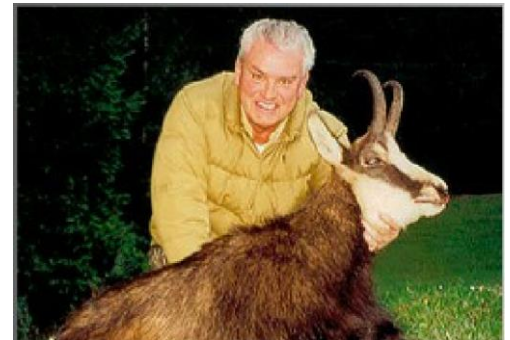
Found in Hungary and Bulgaria. Shoulder height is 36-43" and weight is from 140-220 lbs. Females are smaller. The season is October through May.

Bezoar Ibex-up to 90 cms___\$ 9,900

Found in Turkey. This is a wild goat that generally weighs less than 200 lbs. The Bezoar is a beautiful animal with its blackish-brown markings contrasting dramatically with the lighter body color. Summer coat is lighter reddish-brown color. The chin beard is long and black. Calluses develop on the knees and sometimes on the chest. Males have large horns and there is a distinct front edge which forms a keel for some distance, above which are bold, sharp edged, widely separated knobs. Price over 90 cms is \$250 per centimeter. The season is from October to May.

Carpathian Chamois \$ 4,500

Found in n Romania. Any extra point over 100 CIC (Council on International Game and Wildlife Commission in Europe) = \$250 each Lives at moderately high altitudes and are adapted to living in steep, rugged, rocky terrain. A fully grown adult reaches a height of approximately 2 ½ feet and weights approximately 110 pounds. In summer, the fur has a rich brown color which turns to a light grey in winter. Distinct characteristics are a white face with pronounced black frontal orbital stripes, a white rump and a black dorsal stripe. The season starts in October through May.



Alpine Chamois \$ 4,500

Found in Austria. Any extra point over 100 CIC (Council on International Game and Wildlife Commission in Europe)=\$250 each. This chamois dwells in a mountainous habitat between 2,600' to 8,200'. Most often found on alpine meadows or in mountain forests near cliffs and rocky terrain. In winter they often feed on south facing meadows where snow has already melted, or where snow has gone because of avalanches or wind. The season is from October to May.

European Bison \$ 7,000

Found in n Poland-Ukraine. This is the heaviest surviving land animal in Europe. He typically weighs between 660 and 2,000 lbs and is from 6' to 7 1/2' tall. He is related to the American bison but has shorter hair on the neck, head and forequarters but a longer tail and horns. The season is from October to May.

Roe Deer-up to 350 grs. \$ 3,850

Found in Hungary- Romania. This is a relatively small deer with a body length of 3-4 ½'. His shoulder height is from 2' to 2 ½' and he weights between 33 and 66 lbs. It has rather short, erect antlers and reddish body with a grey face. Its hide is golden red in summer, darkening to brown or even black in winter. The season is from October to May.

European Red Deer up to 7 kilos \$ 7,400

Found in Romania-Hungary

8 kilos	\$ 8,700
9 kilos	\$12,700
10 kilos	\$15,700
11 kilos	\$18,700
12 kilos	\$23,700

Generally the male European Red Deer is typically 70-90" long and weighs 350-530 lbs. The tail adds another 5-7" and shoulder heights is approximately 41-48". The European Red Deer tends to be reddish-brown in the summer coats. The season is from October to May.



Eurasian Brown Bear \$12,350

Found in Romania. Any extra points over 350 CIC (Council on International Game and Wildlife Commission in Europe) = \$ 150 each. This bear has fur which can shift from yellowish-brown to dark brown, reddish brown and in some cases, black. The fur is dense to varying degrees and it can grow up to 4" in length. A full grown male weighs between 300-460 lbs. The largest Eurasian brown bear recorded was 1,058 lbs and was nearly 8.2' long. The season is from October to May.

Alpine Ibex \$15,500

Any extra point up to 165 CIC (Council on International Game and Wildlife Commission in Europe) = \$500 each.

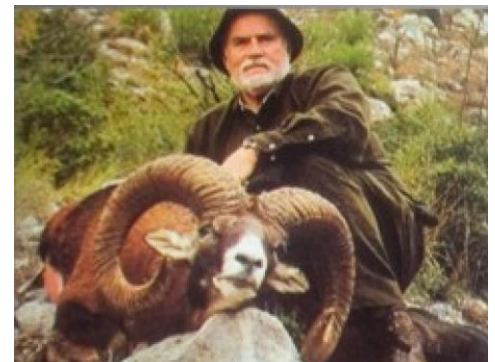
Found in Austria. Being an excellent climber, the habitat is the rocky region along the snowline above alpine forests of the European Alps. They tend to occupy steep, rough terrain at elevations of 6,500' – 15,000'

Balkan Chamois \$ 4,500

Found in Croatia and Bulgaria. Any extra point over 100 CIC (Council on International Game and Wildlife Commission in Europe) = \$250 each. Lives at moderately high altitudes and are adapted to living in steep, rugged, rocky terrain. A fully grown adult reaches a height of 2 ½ feet and weights about 110 lbs. In summer, the fur has a rich brown color which turns to a light grey in winter. Distinct characteristics are a white face with pronounced black, interfacial orbital stripes, a white rump and a black dorsal stripe. The season is from October through May.

Mouflon Sheep up to 30 inches \$ 5,200

Found in Croatia. Any extra inches, \$300 each. This sub-specie group of wild sheep *Ovis orientalis* is thought to be one of the two ancestors for all modern domestic sheep breeds. It is reddish brown with a dark back stripe, light colored saddle patch and under parts. The males are horned as are some females while others lack horns. Mouflon males have a shoulder height of 35" and weigh 110 lbs.



Reindeer \$ 5,450

In Sweden-Norway

The male can weigh between 220 and 700 lbs. and measures 71-84" in body length. The last remaining reindeer in Europe are found in portions of southern Norway and Sweden. The southern boundary of the species' natural range is approximately 62° north latitude. The season is from October to the end of May.



Wild Boar \$2,000

In Romania-Hungary
Weighs 80 – 120 lbs. and some tuskers are even bigger. The hunting season is from October through May.

Anatolian Chamois \$5,800

In Turkey

This Chamois lives in mountainous habitat between 2,600' and 8,200'. He is most often found on alpine meadows or in mountain forests near cliffs and rocky terrain. In winter they often feed on south facing meadows where snow has already melted, or where snow has gone because of avalanches or wind. The hunting season is from October to the end of May.



Daily Rate

1 hunters /1 professional	\$750 per day
2 hunters /1 professional	\$700 each per day
2 hunters / 2 professional	\$725 each per day
Non-hunters	\$250 per day

Price Includes: transfer from/to airport, transportation during the hunt, full board during the hunt, first preparation in the field (green), English speaking guide.

Price Excludes: hotel before and after the hunt, each hunting license (\$200), general insurance (\$80), trophy export permit, packing and dipping (\$250 per trophy), gun rental or shotguns and ammunition (\$200 per week), domestic and international flights, trains, etc, tips and personal expenses, VAT 16% on the trophy fee, special food, cost of medications, immunizations, hospitalizations and services of doctors, charges for evacuation or rescue by ambulance, helicopter or airplane and any other service or product that is not agreed or mentioned in this document.

Reservations & Payments per person in U.S. Dollars only: Confirmation will be upon receipt of a 20% deposit on daily rate and trophy fee by contract. 40% due 3 months before hunt, Balance of 40% to be paid 30 days before the hunt. You must also read, understand and accept by signing the [Terms and Conditions](#), [Release of Liability](#) and the [Hunting Contract](#). Upon entry into the U.S. with a trophy, present to authorities your [Wildlife Declaration Form 3-177](#). All clients must comply with the U.S. Department of the Interior/Fish and Wildlife Services laws, requirements and conditions.



We recommend **RIPCORD** for your Rescue Travel Insurance. They provide a one-stop integrated travel protection program for adventurers and 24/7 contact with medical and security professionals. They are a medical and travel security risk company that provides worldwide evacuation and rescue services from your point of emergency all the way home. www.ripcordrescuetravelinsurance.com/portal/highmtnhunts

We recommend **TRAVEL WITH GUNS**, travel agency, out of San Antonio, Texas. Call Steve Turner at (210) 858-9833. His staff knows each airline and every detail of international regulations when it comes to transporting guns to a hunting destination.

We recommend that you either buy or rent an **Explorer Satellite Telephone**. These telephones offer you unparalleled satellite phone service providing every mobile satellite customer with tailor-made satellite solutions via the Inmarsat, Iridium, Globstar and Thuraya satellite. <http://www.explorersatellite.com>