

**HIGH MOUNTAIN HUNTS**  
**Joel Pat Latham, President**  
 806 Oak Shadows Court  
 Mansfield, Texas 76063

[www.HighMountainHunts.com](http://www.HighMountainHunts.com)  
[Latham@HighMountainHunts.com](mailto:Latham@HighMountainHunts.com)  
 Cell: 817-371-4340

**HUNT IBEX IN SPAIN**

s [Click for Additional Photos](#)

This is an old establish company specializing in the Spanish Ibex hunting trips and driven hunts. They are the owners of the some of the very best ibex hunting areas. Every year they exceed their expectations on trophy quality. In their desire to offer the hunter the best trophy they are constantly adding new unexplored hunting areas. As outfitters for ibex in Spain, they have available approximately 200 ibex permits each season. They organize hunting trips for the Spanish Grand Slam ibex -100% wild animals; as well as combo hunts with different big game species available throughout the country such as: wild boar, red deer, fallow deer, chamois, aoudad sheep, mouflon and more. Spain has a lot more to offer, such as its rich and varied gastronomy, excellent red wine, flamenco dancing, bull fights, cathedrals, museums, and the beauty of the mountain’s small villages. With this outfitter, you will experience one of the best hunts ever!



1X1 DAILY RATE	TAX	LICENSE & INSURANCE	FIREARM RENTAL	OBSERVER	WEATHER
\$750	21% VAT	\$300/area	\$200	\$350/day	<a href="#">Click Here for Weather</a>

**TROPHY FEES**

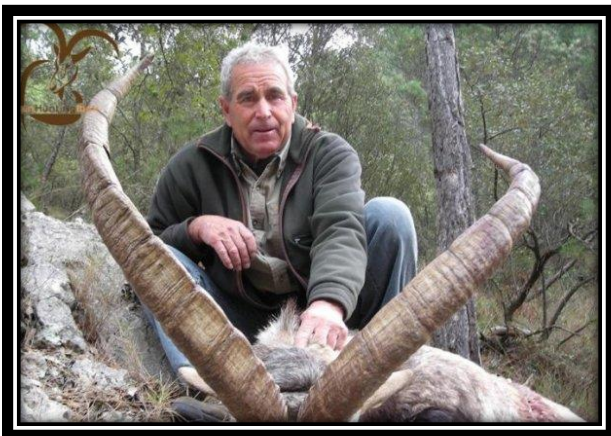
<b>BECEITE</b>	up to 69 SCI points	\$8,000
	70-72 SCI points	\$9,000
	73-79 SCI points	\$10,500
	80+ SCI points	\$12,000 +500/point
<b>SOUTHEASTERN</b>	up to 63 SCI points	\$8,000
	64-69 SCI points	\$9,000
	70-74 SCI points	\$10,500
	75+ SCI points	\$12,000 +500/point
<b>RONDA</b>	UP TO 56 SCI points	\$8,000
	57-61 SCI points	\$12,000
	62-65 SCI points	\$16,000
	66+ SCI points	\$12,000 + 500/ point



<b>GREDOS</b>	up to 69 SCI points	\$8,000
	70-75 SCI points	\$12,000
	76-79 SCI points	\$16,000
	80+ SCI points	\$18,000 + 750/point

**OTHER TROPHIES AVAILABLE**

Ferral Goat -----	\$2,600
Cantabrain Chamois -----	\$6,000
Pyrenean Chamois -----	\$6,000
Iberian Mouflon up to 105 SCI points -----	\$6,000
Over 105 SCI points add \$300 per point or fraction	
European Fallow Deer -----	\$5,000
Over 170 SCI points add \$300 per point or fraction	
Iberian Red Deer up to 190 SCI points -----	\$5,000
Over 190 SCI points add \$300 per point or fraction	
Eurasian Wild Boar -----	\$2,000
Roe Deer -----	\$4,500
Balearian Goat/BOC -----	\$6,000
23"     \$6,500	
26"     \$9,000	
30"     \$10,000 + \$600/in	



**INCLUDED IN PRICE:** reception at the airport, firearm clearance, transportation to/from the airport to the hunting area and during the hunt, professional guide, on hunting days-full board-including overnight in regional hotels or hunting lodges nearby hunting areas, light alcoholic beverages during lunch & dinner, field preparation of trophy (capping and skull cleaning), and transportation of field prepared trophies to nearest taxidermist.

**NOT INCLUDED IN PRICE:** international and domestic airfares, airport taxes, visa, firearm taxes, gun rental and ammunition, hunting license, insurance and necessary documents for the hunt (\$300/area), trophy preparation for export, veterinary certificate, packing and shipping, lodging, meals/drinks before and/or after the hunt, and 21% VAT on the total bill.

**SPANISH GRAND SLAM**

In Spain, four ibexes roam the mountain ranges, distinct and isolated in four ecosystems. Over time, this situation has permitted the ibex in each of these habitats to develop distinct morphological features, including body size, skin color, and especially the shape and size of the horns. These distinctions justify their separation into four hunting categories – which make up the SPANISH GRAND SLAM.





**GREDOS** After the Beceite ibex, the Gredos ibex is the largest and darkest in color and has the largest horns. Typically, the horns are lyre-shaped with a pronounced curve and a spiral turn of more than 180 degrees. Horn thickness decreases progressively from the base to the very thin tip. While this is the typical Gredos horn conformation, other horn shapes may be found in this region and even in the same herd. The Gredos mountains are very accessible being approximately 2 hours from Madrid. They are within reach of some of the most famous historical cities of Spain including 8 UNESCO World Heritage Sites: Ávila, Toledo, Salamanca, Segovia, Caceres,

Guadalupe, Mérida, El Escorial, Plasencia, Trujillo.

**BECEITE** This is the largest and darkest type with the largest horns. Typically, the horns are straighter than in Gredos ibex and have a spiral turn of less than 180 degrees. Horn thickness remains constant for half the length, then decreases toward the tip, which is not as thin as in the Gredos race. While this is the typical Beceite horn conformation, other horn shapes may be found in this region and even in the same herd. This is one of the most beautiful corners of Spain, notable for the striking contrasts of its rugged mountain terrain and the neatly tended fields and orchards of its unspoiled valleys. The Tortosa-Beceite mountains range is the home for the biggest of the subspecies of Spanish Ibex. The mountains are located very close to the sea, meaning that the climate is very mild, but the landscape is rough and rugged an excellent scenery to enjoy hunt in its pure state.



**SOUTHEASTERN** Smaller and lighter in color than the Beceite and Gredos types, but larger and darker than the Ronda type. Horn size and shape vary considerably from place to place, with those from the Sierra Nevada generally the largest. Horns from Tejada-Almijara tend to be the most distinctive, forming a circle with the tips growing toward the neck like those of a mouflon. The keel is smooth, making the horns almost round in cross-section. The Sierra Nevada is a dramatic, rugged and extensive mountain range, the highest in Europe after the Alps. The protected area encompasses 213,024 acres of torrential rivers, sheer-sided gorges, stony scree slopes, glacial lakes between snowy summits and, in the foothills of the Alpujarras, cultivated terraces of almond trees and vegetables. Designated a national park in 1998, it is one of

only two in Andalucia.

**RONDA** The smallest type of Spanish ibex with the smallest horns. Overall color is a light brown. The horns resemble those of an Alpine ibex, typically growing upward in a V-shape, then backward with a spiral turn of only 90 degrees. Horn thickness is constant for half the length, then decreases gradually to the broomed tips. While this is the typical Ronda horn conformation, other horn shapes may be found in this region and even in the same herd. The Ronda mountains are situated north of Malaga in the Adalucian region of Spain. The hills in this area are modest by European standards. The highest peak is 6,300 feet. What they lack in height they more than make up for in magnificent Iberian spectacle. The landscape here is a mixture of steeply rising limestone buttresses, weathered, jagged formations and deep valleys. Look up and you will see eagles and griffon vultures circling on currents of warm air. Set out on one of the local walks and you will be strolling through ancient olive groves with sheep and goats grazing on the hillside. It is a rural idyll, high enough to be cooled by the breeze off the Mediterranean to the south.





Blue = Full Month, Orange = 1<sup>st</sup> Half of Month, Green = 2<sup>nd</sup> Half of Month

### HUNTING SEASONS

SPECIES	JAN	FEB	MAR	APR	MAY	JUN	JUL	AGO	SEP	OCT	NOV	DEC
Gredos Spanish Ibex	Blue	Blue	Blue	Blue	Blue	Orange	White	White	Green	Blue	Blue	Blue
Beceite Spanish Ibex	Blue	Blue	Blue	Blue	Blue	White	White	White	White	Green	Blue	Blue
South-East Spanish Ibex	Blue	Blue	Blue	Blue	Blue	White	White	White	White	Green	Blue	Blue
Ronda Spanish Ibex	Blue	Blue	Blue	Orange	White	White	White	White	White	Green	Blue	Blue
Iberian Red Deer	Blue	Orange	White	White	White	White	White	White	Blue	Blue	Blue	Blue
European Fallow Deer	Blue	Orange	White	White	White	White	White	White	Blue	Blue	Blue	Blue
Iberian Mouflon Sheep	Blue	Blue	Blue	Blue	Blue	White	White	White	White	White	White	White
European Roe Deer	Blue	Blue	Green	Blue	Blue	Blue	Blue	Blue	Blue	Orange	White	White
Pyrenean Chamois	Blue	Blue	Blue	Blue	Blue	White	White	White	White	Green	Blue	Orange
Cantabrian Chamois	Blue	Blue	Blue	White	White	White	White	White	White	White	White	White
Barbary Sheep (Aoudad)	Blue	Blue	Blue	Blue	Blue	Blue	Blue	Blue	Blue	Blue	Blue	Blue
Balearian Boc	Blue	Blue	Blue	Blue	Blue	Blue	Blue	Blue	Blue	Blue	Blue	Blue
Wild Boar	Blue	Blue	Blue	Blue	Blue	Blue	Blue	Blue	Blue	Blue	Blue	Blue
Iberian Wolf	Blue	Blue	Blue	Blue	Blue	Blue	Blue	Blue	Blue	Blue	Blue	Blue
	FULL MONTH			1st. HALF			2nd. HALF					

We recommend **RIPCORD** for your Rescue Travel Insurance. They provide a one-stop integrated travel protection program for adventurers and 24/7 contact with medical and security professionals. They are a medical and travel security risk company that provides worldwide evacuation and rescue services from your point of emergency all the wayhome. [www.ripcordrescuetravelinsurance.com/portal/highmntnhunts](http://www.ripcordrescuetravelinsurance.com/portal/highmntnhunts)

We recommend **TRAVEL WITH GUNS**, travel agency, out of San Antonio, Texas. Call Steve Turner at (210) 858-9833. His staff knows each airline and every detail of international regulations when it comes to transporting guns to a hunting destination.

We recommend that you either buy or rent an **Explorer Satellite Telephone**. These telephones offer you unparalleled satellite phone service providing every mobile satellite customer with tailor-made satellite solutions via the Inmarsat, Iridium, Globstar and Thuraya satellite. <http://www.explorersatellite.com>