

Joel Pat Latham
 3409 Redstone Drive
 Arlington, Texas 76001-6507
 U.S.A.
 Cell: 817-371-4340
 E-Mail: latham@HighMountainHunts.com
 Web address: www.HighMountainHunts.com

[Click Here For More Photos](#)

ALASKA

Have you ever dreamed of mushing a dog team of huskies along a frozen river, in the heart of Alaska's Wilderness?...of calling a large Alaskan Bull Moose right to your canoe? ...of cozy nights in your tent, as the Arctic skies come alive with the Northern Lights and wolves howl from the surrounding hills?...of hunting the land of the largest Brown Bears in the World?...of true wilderness and real freedom? If so... it awaits you This is big game hunting opportunities and trap line adventures that are as unique and exciting as the lands where they bring you. The focus is on the adventure and thrill of real hunting, providing clients a chance to connect with the land, while at the same time pursuing the trophy they've dreamed of.

These hunts are across some of America's most treasured lands-its National Parks and Federal Wildlife Refuges. These Federal lands are carefully managed and contain some of Alaska's greatest natural treasures. They are located in remote areas of Alaska, maintaining a truly wild and pristine experience for its visitors. We hold exclusive rights to provide guided hunts within a **one million acre** portion of the *Nowitna National Wildlife Refuge* and, by working together with others, we are also able to provide hunts within the *Gates of the Arctic National Park and Preserve*, the *Arctic National Wildlife Refuge*, and the *Izembek National Wildlife Refuge*.

These guides are among the most experienced woodsmen (and women) in the North. Wilderness trapping, Prospecting, Bush Piloting, and years of remote living have strengthened and sharpened the skills of these men and women. Some of them have over 30 years of guiding experience and, combined, we have taken several hundreds of hunters over the years. You won't easily find another collection of Alaskan guides with this level of experience.

Black Bear can be added to Alaskan Moose, Interior Grizzly, and Moose Grizzly Combination for \$3000.00. Wolves are free.



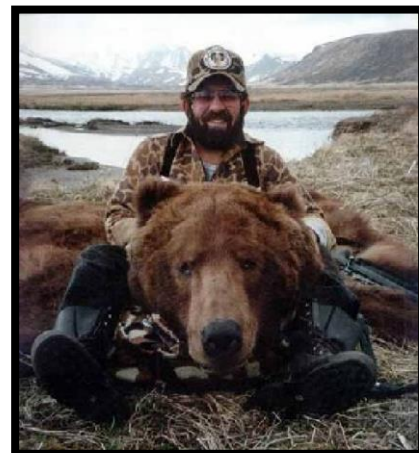
All Prices can be found on Page 4

ALASKAN MOOSE HUNT IN ALASKA

(Alces alces)

Hunting Area	Duration	Range Trophy Size	Notes	Altitude of Hunt
Upper Nowitna NNWR.	10 days	Realistic to expect	85% successful; however almost everyone has an opportunity to harvest but some pass in hopes of larger trophy	1,400' to 2,500'
1,000,000 sole use guide area	10 hunters per year	60" taken each year		Click for Weather

The hunts are not difficult, due to our use of motorized canoes, and the clients have the option to climb ridges to look over the country on several of the rivers we use. We don't use the motors for hunting. The normal routine is to float out of camp in the mornings with just a snack and cup of coffee in the belly, calling and hunting each meadow along the river until 10:30 or 11 AM. We then return to camp for a late breakfast and an hour or two siesta, then head upriver to position for the evening float, checking and lightly calling again along the way to encourage the bulls to come out to the river. We then float back to camp, checking the country over again. If the area doesn't have the sign / activity we want after a few days, each camp has the option to relocate up or down the drainage 10 miles or so, and work a new piece of country. This can be done several times on most hunts. We rarely see other hunters, but it does occasionally happen. There is plenty of country, so it rarely has an impact on a client's hunt. There are three comfortable main camps using canvas wall tents for cooking and sleeping quarters, and we use Bomb shelters for spiking out on long floats or relocating along the rivers. We cook over campfires in the evening, boxed meals, canned, and fresh food. Hunts have an additional charter fee for client transportation to and from the field.



INTERIOR GRIZZLY BEAR HUNT IN ALASKA

(Ursus arctos horribilis)

Hunt Area	Duration	Range Trophy Size	Notes	Altitude of Hunt
Upper Nowitna NNWR. 1,000,000 acres sole use guide area and separate denning area hunt North of the Yukon for April/May hunt	14 days	7' to 8 ½' squared	2 grizzly hunters per year	1,500' to 3,000'

Add \$5,000 as trophy fee on moose hunt

Hunts have an additional charter fee for client transportation to and from the field. See page 5.

Coastal Brown Bear Hunt in Alaska

(Ursus arctos)

Hunting Area	Duration	Range Trophy Size	Altitude of Hunt
Cold Bay, Alaska	11 days 16 days	9' to 10 ½' squared	0' to 400'
Peninsula or Yantarni Bay	10 days 16 days		
150 miles south of King Salmon, Ak	11 days 16 days		

Hunts have an additional charter fee for client transportation to and from King Salmon, Alaska. See page 5.





**DALL
ALASKA**



SHEEP HUNT IN

Hunt Area	Duration	Range Trophy Size	Notes	Altitude
Northern Brooks Range. Gates of the Artic NPP	12 days	35' to 38'	Treeless area making for Great scoping	2,000' to 6,000'

*Arctic Grizzly Trophy Fee - \$15,000

* Bull Caribou Trophy Fee-\$3,500

Hunts have an additional charter fee for client transportation to and from the field. See page 5

ARCTIC GRIZZLY HUNT IN ALASKA

Hunt Area	Hunt Dates	Duration	Range Trophy Size	Altitude of Hunt
Northern Brooks Range. Gates of the Artic NPP	August	10 days	7' to 8' squared	2,000'6,000'

Hunts have an additional charter fee for client transportation to and from the field. See page 5.

DALL'S SHEEP AND ARTIC GRIZZLY COMBINATION

Hunt Area	Duration
Northern Brooks Range	16 days

INTERIOR MOOSE AND GRIZZLY COMBINATION

Hunt Area	Duration	Notes
Upper Nowitna, NNWR. 1,000,000 sole use guide area	14 days 14 days	Black Bear Trophy Fee - \$3,000 Wolves - Free

Hunts have an additional charter fee for client transportation to and from the field

TROPHY CARIBOU AND FISHING

Hunt Area	Duration	Notes
Southern Brooks Range	10 days	Second caribou trophy fee - \$3,500

Hunts have an additional charter fee for client transportation to and from the field



INTERIOR TRAPLINE ADVENTURE IN ALASKA

Hunt Area	Duration	Trophy	Notes
Nowitna River or Kantishna River Regions	10 days	Marten, Lynx, Wolf, Wolverine, Otter and Beaver	From Fairbanks, it is necessary to take a bush aircraft to the trap line and return. Expenses will be shared. Plan to arrive 1 day prior to bush flight to camp. Be aware that bush flights are often delayed due to weather. Click for Weather
	14 days		

The trap lines are truly remote. In winter, we travel to and from our trap lines by airplane, and travel along our 250 miles of hand cut trails and along frozen rivers using both dog teams and snow machines. We trap primarily Wolf, Wolverine, Lynx, Fox, Marten, and Beaver. Two trap lines are operated. The furthest is located in the Nowitna River area, where fall moose/grizzly hunts are available. This trap line is approximately two hours to the West by small plane from Fairbanks and is primarily high country trapping.

Flowing out of the Denali National Park, the McKinley River meanders its way down and turns into the Kantishna River to the north of the Park boundary. This is the location of our original trap line, started in 1926, an hour flight or 8 hours by riverboat from the nearest town. On this trap line, we also spend our summers. Both trap lines offer similar opportunities, and guests are taken to both places.

Depending on your interest, you may wish to come in the early winter to help us set out our traps, open up 'line cabins, and set up tent camps along our many trails. Learn the processes of skinning, stretching, and drying quality furs, the source of our trap line income. Hop on the runners of one of our homemade dog sleds behind a team of dogs. You may also want to come in the spring, when we begin to snap our Marten and Lynx traps for the season, and focus more of our energy on Wolf, Wolverine, and Beaver, whose seasons continue into April.

Most of our summers are spent on the Kantishna River, where two hand-made fish wheels are operated, catching Salmon for dog food and winter trapping bait. Trap line adventures are best with a maximum of one or two guests, which allows for a more one-on-one focus in participating in and experiencing the trap line lifestyle. Trap line adventures are individualized to cater to the specific interests that you have.

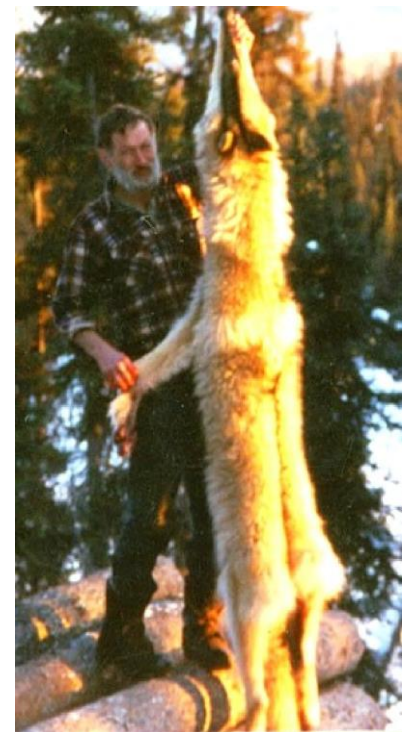
Trap line Accommodations: In main camp, you can have the privacy of a separate cabin. A wood stove and cheery lantern light provide a pleasing atmosphere. All your meals will be prepared for you during your stay and any cold weather equipment that you may need can be arranged for. Comfort and safety are our first goals.

Travel: Plan to arrive 1 day prior to bush flight into camp and depart the day after you return from the bush.

Bush flights are often delayed due to weather.

Trap line Price Includes: accommodations in the field, food, beverages, and guides.

Trap line Price Excludes: Furs; however, we will sell the furs to you at the same price we sell them to the market, which is quite reasonable.



Prices valid from January 2016 to November 2016

All hunts have an additional \$100 charter fee for clients' transportation to and from the field. The charter fees does not include transportation to and from your home to the departure village.

Please note that some of these hunts have drawing permit options/requirements. All hunting permit applications need to be submitted between November 15 and December 15 in the year preceding your hunt.

Non-Hunt Companion fees for 10 days hunts are \$3,000 and \$3,500 for all 14 day or longer hunts.

ALASKAN MOOSE (Sept 5-14, 16-25)

September 10 days	\$18,000
-Grizzly trophy fee added on moose hunt	\$5,500

INTERIOR MOOSE AND GRIZZLY COMBINATION

14 days (Sept 1-14)	\$24,500
Black Bear Trophy fee	\$3,000
Wolves are Free	

INTERIOR SPRING BEAR (10-12 day hunts)

Grizzly – May/June 10 days	\$14,500
Black Bear (3 Bear available) May/June 10 days	\$14,500

COASTAL BROWN BEAR (ALASKA PENINSULA)

May 11 days (May 10-20 or 21-31)	\$23,500
16 days (May 16-31)	\$29,000
October 10 days (Oct 1-10 or 11-21)	\$22,500
16 days (Oct. 4-19)	\$27,500

NORTHERN BROOKS RANGE HUNTS

DALL'S SHEEP

August 10-19 or August 21-30 - 10 days	\$17,500
*Arctic Grizzly trophy fee	\$5,500
*Bull Caribou trophy fee	\$3,500

ARTIC GRIZZLY

August 10-19 or Aug.21-30) - 10 days	\$15,500
*Bull Caribou trophy fee	\$3,500

DALL'S SHEEP/ARTIC GRIZZLY COMBINATION

16 days	\$24,500
---------	----------

TROPHY CARIBOU AND FISHING (SOUTHERN BROOKS RANGE)

August/Sept – 10 days	\$9,750
Second Caribou trophy fee	\$3,500

INTERIOR TRAPLINE ADVENTURE

10 days	\$7,500
14 days	\$10,500

HUNT PRICE INCLUDES: accommodations in the field, food and beverages, trophy field preparation, guide.

HUNT PRICE EXCLUDES: hunting license and tags ([Alaska Hunting Regulations and License and Tag Fees](#)), airfare, airport fees, insurance, gratuities, extra hunting days (if available), extra trophy charges (if available), prepping of trophy, trophy shipment, various state and local government taxes, hotel accommodation and food before and after the hunt, hotel extras, personal expenses, non-hunter, excess baggage, special food, cost of medications, immunizations, hospitalizations and services of doctors, charges for evacuation or rescue by ambulance, helicopter or airplane, and any other service or product that is not agreed or mentioned in this document. Please note that some of these hunts have drawing permit options/requirements. All hunting

-continued-

permit applications need to be submitted between Nov. 15 and Dec. 15 in the year preceding your hunt. Non-hunting companion fees for all 10 day hunts are \$3,000 and for 10 day or longer hunts \$3,500. **There is an additional \$1,000 USD charter fee to all hunts for round-trip transportation to and from the field.** The Northern Brooks Range_(Gates of the Arctic NPP) Hunts have an additional \$650 USD Charter fee. Fairbanks is the arrival city for the Moose Grizzly and Dall's Sheep Hunts and the outfitter will arrange for your onward air reservations. Your arrival destination for the Peninsula Brown Bear hunts is Cold Bay.

RESERVATIONS & PAYMENTS: Per person in U.S. Dollars only, confirmation will be upon receipt of a 50% deposit with balance due 30 days prior to start of hunt. You must also read, understand and accept by signing the [Terms and Conditions](#), [Release of Liability](#) and the [Hunting Contract](#). All clients must comply with the U.S. Department of the Interior/Fish and Wildlife Services laws, requirements and conditions.

Gates of the Arctic National Park and Preserve



“We view our guiding as a part of our subsistence lifestyle. All meat that remains after the guiding season is used both by our family, fellow guides, and other bush residents for their winter's supply of meat. As a result, these trophy animals fulfill a hunting dream; provide income for remote Alaskans as well as our supply of meat for the winter months. We believe that the animals that are harvested in our activities could not be more fully utilized and appreciated in any other manner”.