

**HIGH MOUNTAIN HUNTS**

**Joel Pat Latham, President**

806 Oak Shadows Court

Mansfield, Texas 76063

[www.HighMountainHunts.com](http://www.HighMountainHunts.com)

[Latham@HighMountainHunts.com](mailto:Latham@HighMountainHunts.com)

Cell: 817-371-4340

nwt/ht/mh

**HUNTING IN MONGOLIA**

[Click for More Photos](#)

**Altai Argali** (ovis ammon ammon) referred to as King of all sheep, having the heaviest horns with the most beautiful shapes. Altai Argali's main habitats are exposed hills up to 10,000 ft. above sea level and rocky pockets between the snow-capped peaks of the Altai range. During winters, Argali move down the mountains. A male of Altai Argali is over 4ft tall; body length is 5 ft. and weighs 400 lb. The horns curve in spiral and normally measure 50-60 inches in length and 15-20 inches in circumference on the base.



**Hangai Argali** (ovis ammon mongolica) exists in the Southwestern part of Hangai Mountains. It is smaller than Ovis ammon ammon and larger than Ovis ammon darwini. Average Trophy size: 46-50 inches in length and 15-17 inches in girth.

**Gobi Argali** (ovis ammon darwini) are found in mountain ranges of the Gobi desert in south and south-western Mongolia. They are smaller than their close relatives; however, the largest recorded horns of this sheep were measured at 54" long over the curve. Average trophy size: 40-45 inches in length and 14-16 inches in girth.

**CITIES and other permit (s) may be required by U.S. Fish and Wildlife for endangered wildlife. No sale may be consummated until the necessary permit (s) has been obtained from the USFW Service.**



| <u>Trophy</u> | <u>Duration</u>  | <u>Season</u> | <u>Price</u> |
|---------------|------------------|---------------|--------------|
| Altai Argali  | 16 day itinerary | July 1-Oct.1  | \$100,000    |
| Hangai Argali | 14 day itinerary | July 1-Oct.1  | \$ 85,000    |
| Gobi Argali   | 14 day itinerary | July 1- Oct.1 | \$ 80,000    |

**Altai Ibex** (capra sibirica sibirica), the larger of two different Ibex in Mongolia is mostly found in steep cliffs and narrow canyons with loose rock strips. Major hunting areas are rocky cliffs of drier part of the Altai range in Hovd and Govi-Altai provinces. A male Altai Ibex stands at around 3 feet tall and weighs 280 lbs. Hunting season is July 15-Oct. 1. Average trophy size: 34-39 inches in length

**Gobi Ibex** (capra sibirica hagenbecki) are scattered through a number of mountain ranges in south and south-western Mongolia. The best Gobi Ibex trophies hit a length of over 40 inches. Hunting Season: July 15- Oct. 15. Average trophy size: 34-39 inches in length

**Average Temperatures in Mongolia:**

July - 62°F  
September - 46°F

August - 59°F  
October - 29°F



**White-Tailed Gazelle** (*Procapra Gutturosa*)

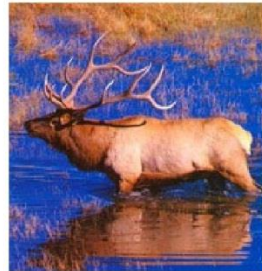
**Gobi Ibex** are scattered through a number of separate mountain ranges in South and South-Western Mongolia.

**Mongolian Elk** are similar to the Rocky Mountain Elk. This is the greatest hunting bargain you can hope to find.

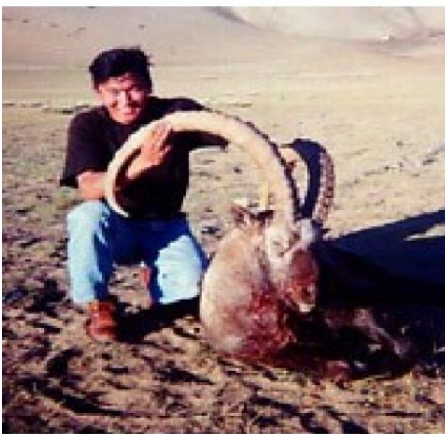
Permits are limited and sell out rapidly.

**ADDITIONAL TROPHIES**

|                      |         |
|----------------------|---------|
| Altai Ibex           | P.O.R   |
| Gobi Ibex            | \$7,500 |
| Maral Stag           | P.O.R   |
| White-Tailed Gazelle | \$2,000 |
| Roe Deer             | \$3,500 |
| Wild Boar            | P.O.R   |
| Wolf                 | P.O.R   |
| Capercille           | P.O.R   |
| Black Grouse         | P.O.R.  |



| <u>Speci</u>                      | <u>Duration</u>                 | <u>Price</u> |                  | <u>Season</u>  |
|-----------------------------------|---------------------------------|--------------|------------------|----------------|
| Maral Stag 1x1                    | 7 days itinerary, 5 day hunting | \$12,500     | Observer \$2,400 | Sept. 1–Nov. 1 |
| Maral Stag 2x1                    | 7 days itinerary, 5 day hunting | \$12,500     | Observer \$2,400 | Sept. 1–Nov. 1 |
| Maral Stag and White Gazelle, 1x1 | 10 day itinerary, 8 day hunting | \$16,500     | Observer \$2,700 | Sept. 1–Nov. 1 |
| Maral Stag and White Gazelle, 2x1 | 10 day itinerary, 8 day hunting | \$15,850     | Observer \$2,700 | Sept. 1–Nov. 1 |
| Maral Stag 1x1 and wolf           | 7 day itinerary, 5 day hunt     | \$ 4,800     | Observer \$1,800 | Sept. 1–Nov. 1 |
| Maral Stag 2x1 and wolf           | 7 day itinerary, 5 day hunt     | \$ 4,300     | Observer \$1,800 | Sept. 1–Nov. 1 |



**MONGOLIAN SAFARI SPECIAL**

|  |                       |       |
|--|-----------------------|-------|
| 18 days itinerary from Ulaanbaatar 1x1 | Season July 15-Oct 30 | P.O.R |
| Observer                               |                       | P.O.R |
| Trophy Fees                            |                       |       |
| Wild Boar                              |                       | P.O.R |
| Roe Deer                               |                       | P.O.R |
| Altai Ibex (any size)                  |                       | P.O.R |
| Gobi Ibex (any size)                   |                       | P.O.R |
| Maral Stag                             |                       | P.O.R |
| White Gazelle                          |                       | P.O.R |

Free: one gray wolf if taken during the hunt

## IBEX SPECIAL

|                                 |                             |        |                        |
|---------------------------------|-----------------------------|--------|------------------------|
| Altai Ibex (any size) 1x1       | 9 day itinerary, 5 day hunt | P.O.R. | Season July 15-Oct. 15 |
| Altai Ibex (any size) 2x1       | 9 day itinerary, 5 day hunt | P.O.R. | Season July 15-Oct. 15 |
| Gobi Desert Ibex (any size) 1x1 | 9 day itinerary, 5 day hunt | P.O.R. | Season July 15-Oct. 15 |
| Gobi Desert Ibex (any size) 2x1 | 9 day itinerary, 5 day hunt | P.O.R. | Season July 15-Oct. 15 |
| Observer                        |                             |        |                        |

## COMBINATION SPECIALS

| <u>Duration</u>                          | <u>Season</u>                     | <u>Prices</u>            | <u>Observer</u> |        |
|--|-----------------------------------|--------------------------|-----------------|--------|
| Altai & Gobi Ibex 1x1                    | 14 day schedule                   | July 15-Oct 15           | P.O.R           | P.O.R. |
| Altai Ibex & Maral Stag 1x1              | 14 day schedule                   | July 15-Oct 15           | P.O.R.          | P.O.R. |
| Gobi Ibex, White-Tailed Gazelle 1x1      | 10 day schedule                   | July 15-Oct 15           | P.O.R.          | P.O.R. |
| Gobi Ibex, White-Tailed Gazelle 2x1      |                                   | (Sept. 1 through Oct 15) | P.O.R.          | P.O.R. |
| 2 White-tailed Gazelle & wolf 1x1        | 7 day schedule                    | Sept. 1–Nov. 1           | P.O.R.          | P.O.R. |
| 2 White-tailed Gazelle & wolf 2x1        | 7 day schedule                    | Sept. 1–Nov. 1           | P.O.R.          | P.O.R. |
| 2 White-tailed Gazelle & Sand Grouse 4x2 | 7 day itinerary (20 grouse incl.) | Sept. 1–Nov. 1.          | P.O.R.          | P.O.R. |
| 2 White-tailed Gazelle & Sand Grouse 6x2 | 7 day itinerary (20 grouse incl.) | Sept. 1–Nov. 1.          | P.O.R.          | P.O.R. |

Wingshooting & Fishing Information available upon request

2.5 hr flt Ulaanbaatar  
8 hr. drive by 4WD

High Altai Range

8 hr by 4WD  
to southern tip  
mountain range

Mid-Altai Range  
(Hangai)

2.5 hr flt. Ulaanbaatar  
3-4 hrs by 4WD

Gobi Desert

You reach the Mid-Gobi by road 5.7 hr.  
from Ulaanbaatar 4WD



### **Travel:** Visa Information for U. S. Citizens Only:

Holders of US passports, who travel to Mongolia for official, private business and tourism for up to 90 days are exempted from visa requirements in accordance with the new visa policy. See [Mongolian Embassy](#). Fly to Ulaanbaatar via [Korean Air](#). Currently, it is best to go San Francisco (SFP) Seoul (ICN)-Ulaanbaatar (ULN). It is more difficult to get firearms through Frankfurt or Moscow. Camps are Ger and comfortable and warm. The food is local. Weather permitting, hunters will use tents & sleeping bags (provided) to stay close to animals, otherwise, hunters return to base camp at night. All clients must comply with the US Dept. of Interior/Fish and Wildlife Service laws, requirements and conditions. For [Weather Information](#), click here.

**Price includes:** Transfer, 4 wd vehicles, Ger (Mongolian Tent) accommodations, meals, interpreter, field care, and export document. Our hunting camps are conveniently located in the best spots of Altai, Gobi and Central Mongolian game regions. Our guides are genuine hunting experts and have been guiding for 10-25 years. They frequently speak your language.

**Price excludes:** hotel and meals in Ulaanbaatar, firearms, ammo, domestic flights and baggage over 33 pounds, Mongolian Export CITES, extra days in the hunting/fishing area at \$300 per day, any insurance, tips, trophy shipment, special food, cost of medications, immunizations, hospitalizations and services of doctors, charges for evacuation or rescue by ambulance, helicopter or airplane, and any other service or product that is not agreed or mentioned in this document. Wounding of animal requires imperative finding the game. Otherwise the hunt is considered to be completed and should be paid in full.



**Reservations, Payments & Permits:** Confirmation will be upon receipt of a non-refundable deposit with the balance to be paid 60 days before the beginning of the hunt (No refund will be made for cancellations. Name changes are permitted and cancellation fees will not be charged if substitute is provided for the canceled person). You must also read, understand and accept by signing the [Terms and Conditions](#), [Release of Liability](#) and the [Hunting Contract](#). \*Argali are in CITES II. A hunting license application must be made on your behalf to the Mongolian authorities. The Mongolian authorities then notify the CITES secretary and he notifies US Fish & Wildlife of your legal request to hunt and export and import. U.S. clients must personally and in advance, complete [USFW Application Form 3-200-21](#) and mail to U.S. Fish and Wildlife Service Division of Management Authority (DMA) Branch of Permits, MS: IA 5275 Leesburg Pike Falls Church, VA 22041-3803 1-800-358-2104 or 703-358-2104, return receipt requested. The USFW then issues the U.S. CITES Import Permit Form 3-201, normally issued in a minimum of 30 days and with many requests, averaging between 60-90 days. It is the exclusive responsibility of the hunter to comply with all the U. S. Dept. of the Interior /Fish & Wildlife Service wildlife permit conditions.

**Domestic Transportation**

|                     |        |
|---------------------|--------|
| West Altai          | P.O.R. |
| Gobi Desert         | P.O.R. |
| Hangai              | P.O.R. |
| Forest              | P.O.R. |
| Add on Gazelle hunt | P.O.R. |

**UlanBatar City Package**

|   |        |
|---|--------|
| Edelweiss Star Hotel- Meals and Sight Fee   | P.O.R. |
| Edelweiss 5 Star Hotel- Meals and Sight Fee | P.O.R. |
| Kempinski 4 Star Hotel- Meals and Sight Fee | P.O.R. |
| Edelweiss 3 Star Hotel- Meals and Sight Fee | P.O.R. |

We recommend **RIPCORD** for your Rescue Travel Insurance. They provide a one-stop integrated travel protection program for adventurers and 24/7 contact with medical and security professionals. They are a medical and travel security risk company that provides worldwide evacuation and rescue services from your point of emergency all the way home. [www.ripcordrescuetravelinsurance.com/portal/highmtnhunts](http://www.ripcordrescuetravelinsurance.com/portal/highmtnhunts)

We recommend **TRAVEL WITH GUNS**, travel agency, out of San Antonio, Texas. Call Steve Turner at (210) 858-9833. His staff knows each airline and every detail of international regulations when it comes to transporting guns to a hunting destination.

We recommend that you either buy or rent an **Explorer Satellite Telephone**. These telephones offer you unparalleled satellite phone service providing every mobile satellite customer with tailor-made satellite solutions via the Inmarsat, Iridium, Globstar and Thuraya satellite. <http://www.explorersatellite.com>

