

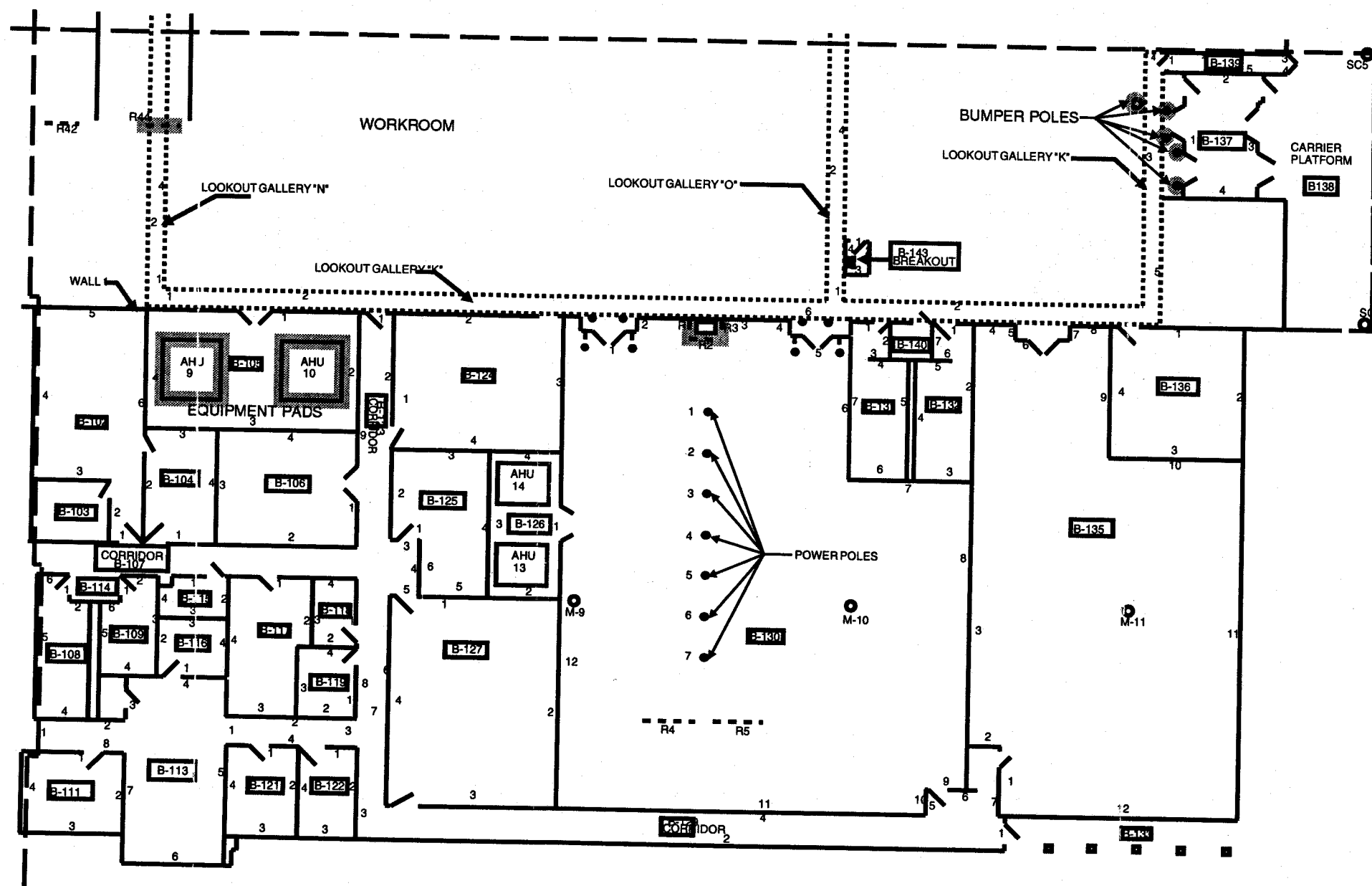
AREA A

Scale: Estimated as approximately 1" = 24'

LEGEND:

- Extent of Lead-Based Paint
- Railing/Handrail Number

Figure 2a
EXTENT OF LEAD-BASED PAINT
 Ft. Myers, Florida General Mail Facility
 113077-G11
 United States Postal Service
 Contract No. 475450-94-B-0322
 Work Order No. 134.00
 LBP Survey and Assessment
 November 1995



WALL NUMBERS = 1, 2, 3, --- 14, 15, ETC.



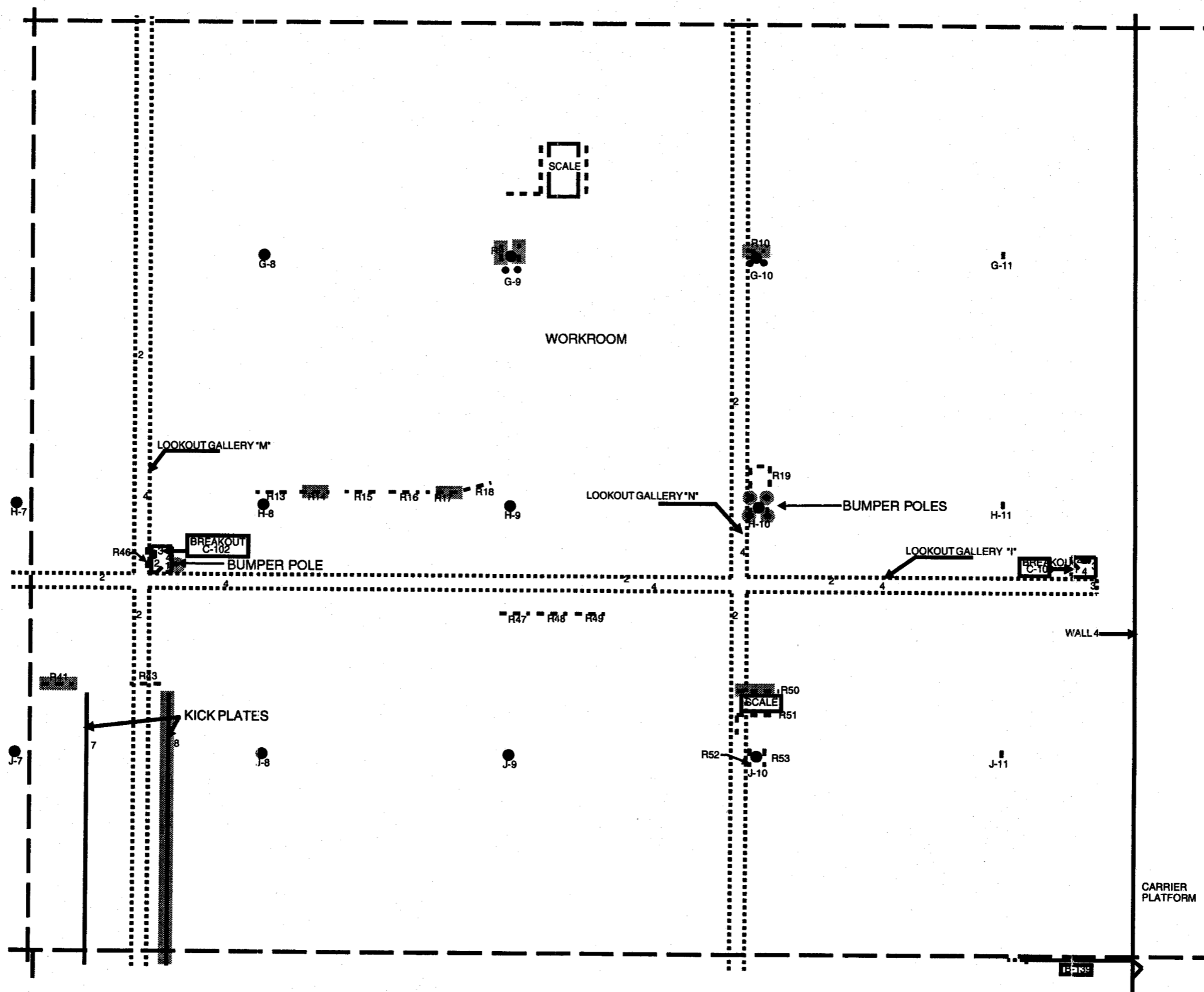
Scale: Estimated as approximately 1" = 24'

AREA B

LEGEND:

- Extent of Lead-Based Paint
- R28 Railing/Handrail Number

Figure 2b
EXTENT OF LEAD-BASED PAINT
 Ft. Myers, Florida General Mail Facility
 113077-G11
 United States Postal Service
 Contract No. 475450-94-B-0322
 Work Order No. 134.00
 LBP Survey and Assessment
 November 1995



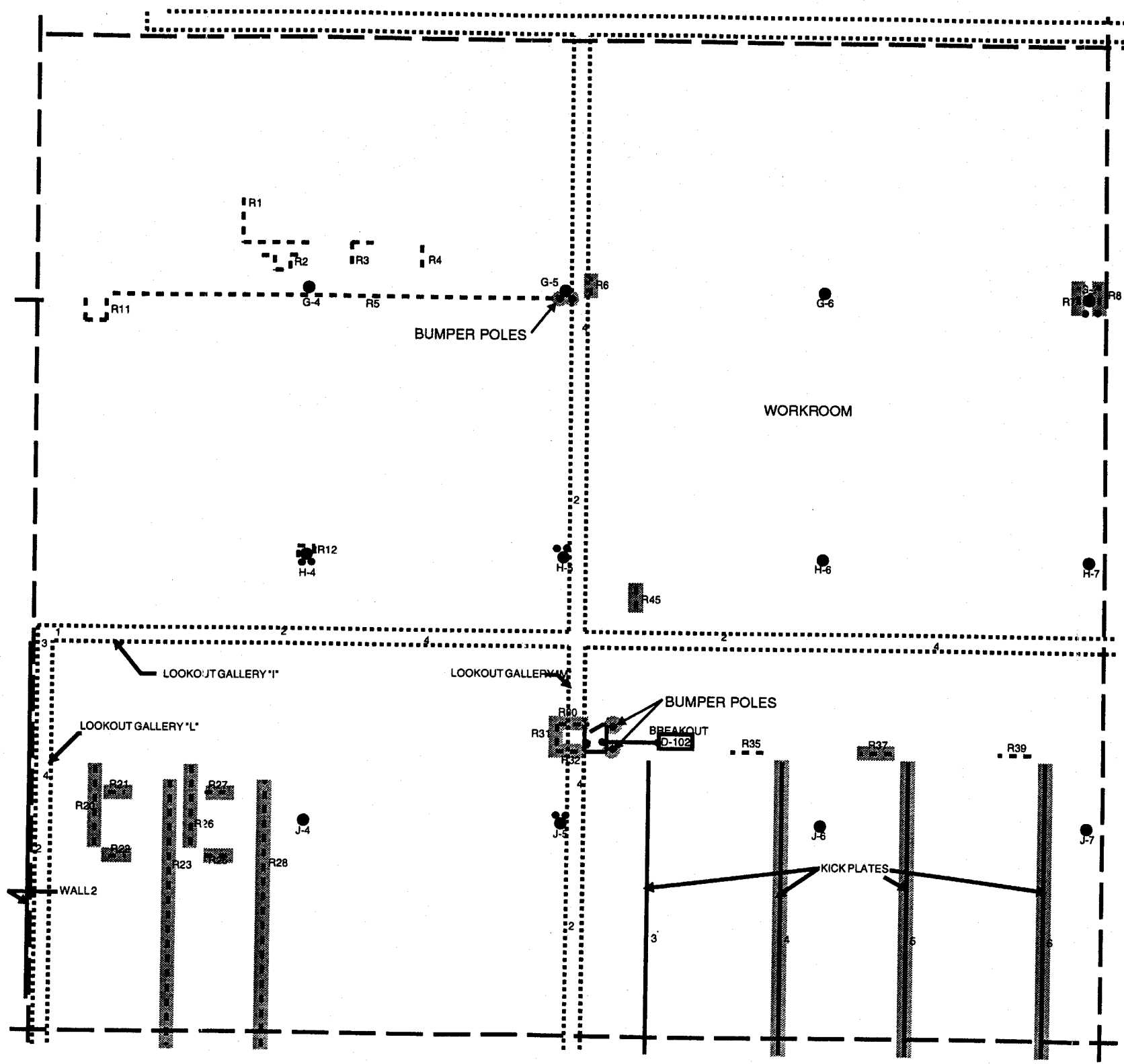
AREA C

Scale: Estimated as approximately 1" = 24'

LEGEND:

- Extent of Lead-Based Paint
- R28 Railing/Handrail Number

Figure 2c
EXTENT OF LEAD-BASED PAINT
 Ft. Myers, Florida General Mail Facility
 113077-G11
 United States Postal Service
 Contract No. 475450-94-B-0322
 Work Order No. 134.00
 LBP Survey and Assessment
 November 1995



AREA D



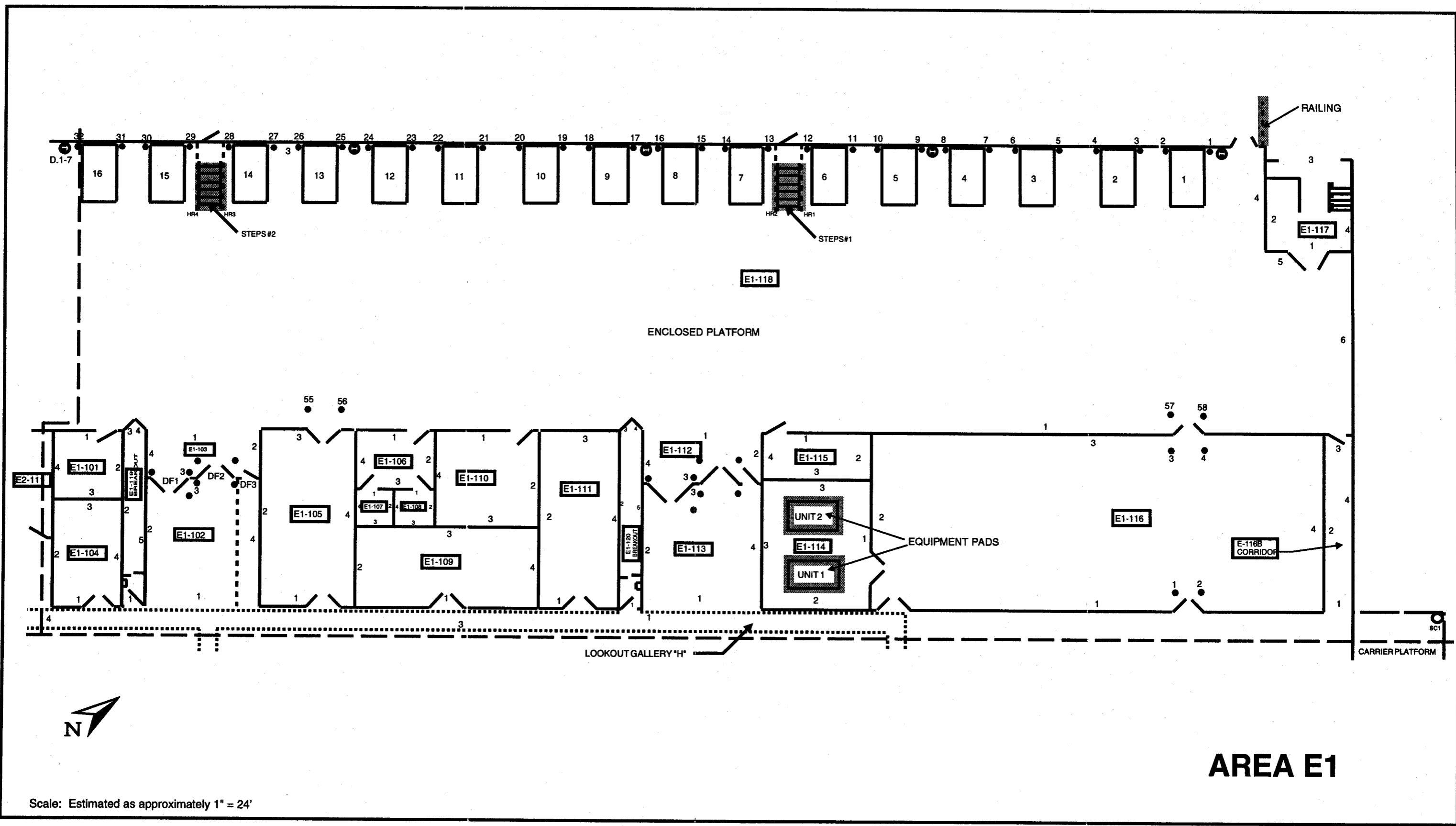
Scale: Estimated as approximately 1" = 24'

LEGEND:

- Extent of Lead-Based Paint
- R28 Railing/Handrail Number

Figure 2d
EXTENT OF LEAD-BASED PAINT
 Ft. Myers, Florida General Mail Facility
 113077-G11
 United States Postal Service
 Contract No. 475450-94-B-0322
 Work Order No. 134.00
 LBP Survey and Assessment
 November 1995



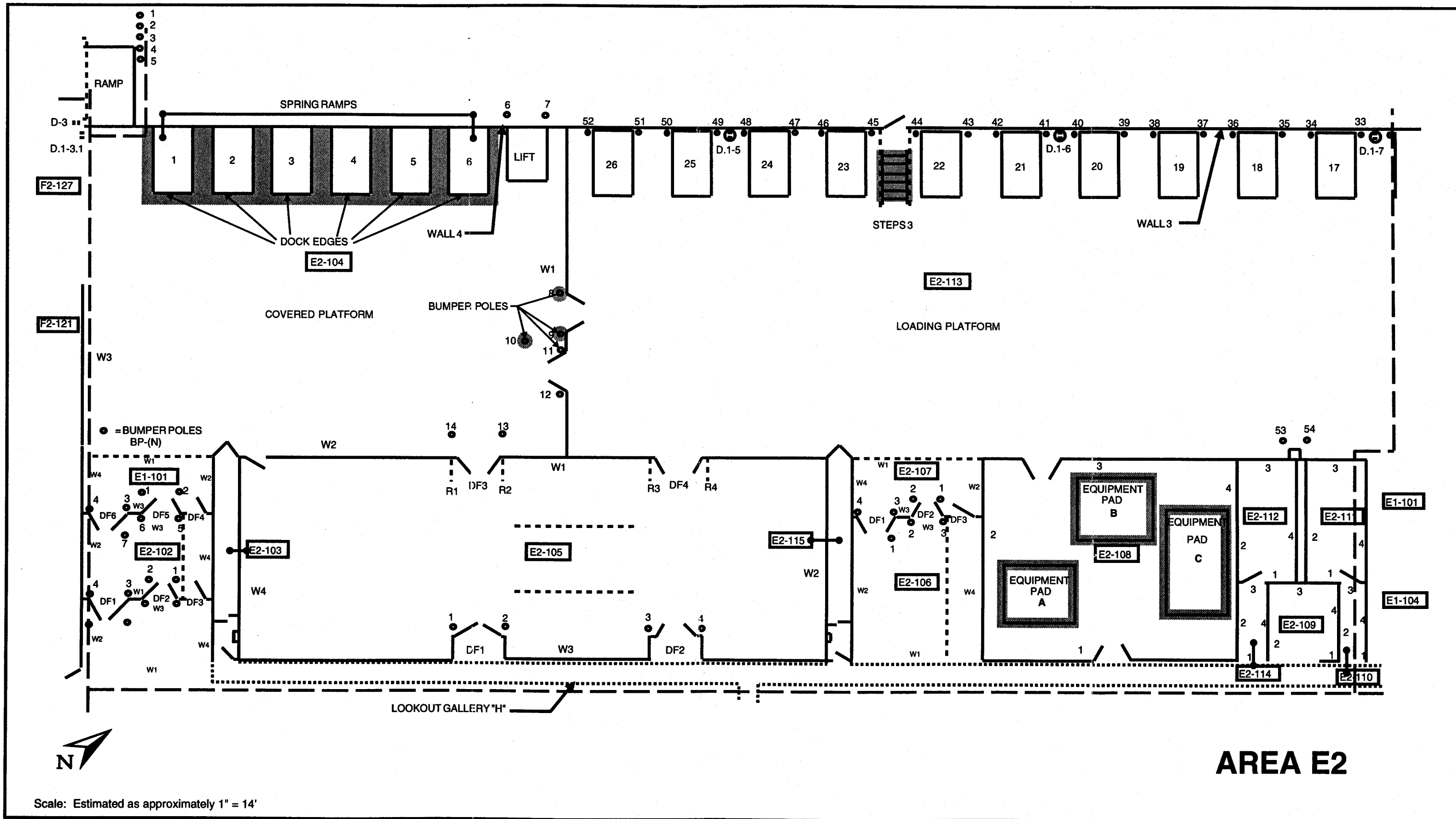


LEGEND:

- Extent of Lead-Based Paint
- R28 Railing/Handrail Number

AREA E1

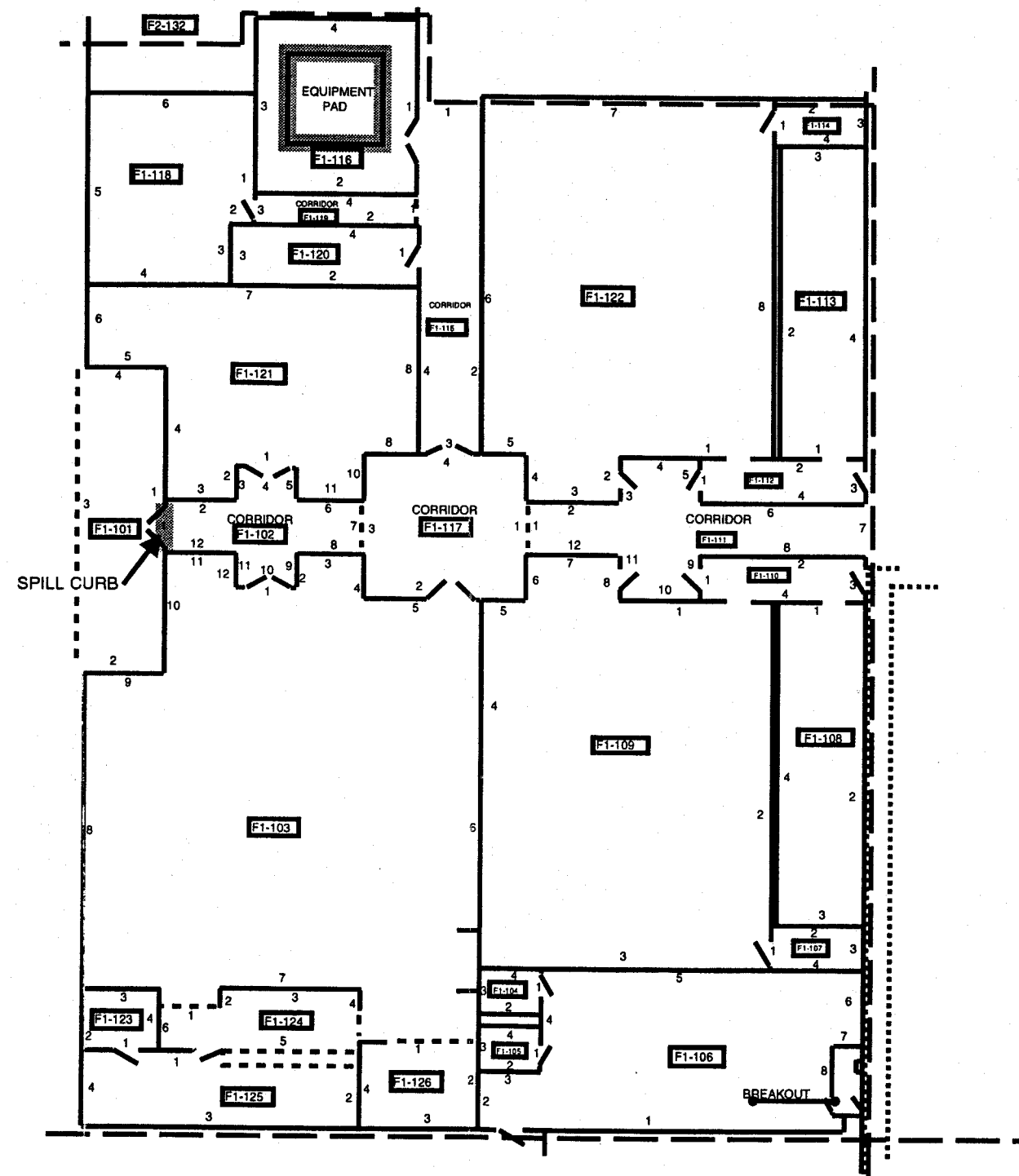
Figure 2e
EXTENT OF LEAD-BASED PAINT
 Ft. Myers, Florida General Mail Facility
 113077-G11
 United States Postal Service
 Contract No. 475450-94-B-0322
 Work Order No. 134.00
 LBP Survey and Assessment
 November 1995



LEGEND:

- Extent of Lead-Based Paint
- R28 Railing/Handrail Number

Figure 2f
EXTENT OF LEAD-BASED PAINT
 Ft. Myers, Florida General Mail Facility
 113077-G11
 United States Postal Service
 Contract No. 475450-94-B-0322
 Work Order No. 134.00
 LBP Survey and Assessment
 November 1995
 DAMES & MOORE



AREA F1

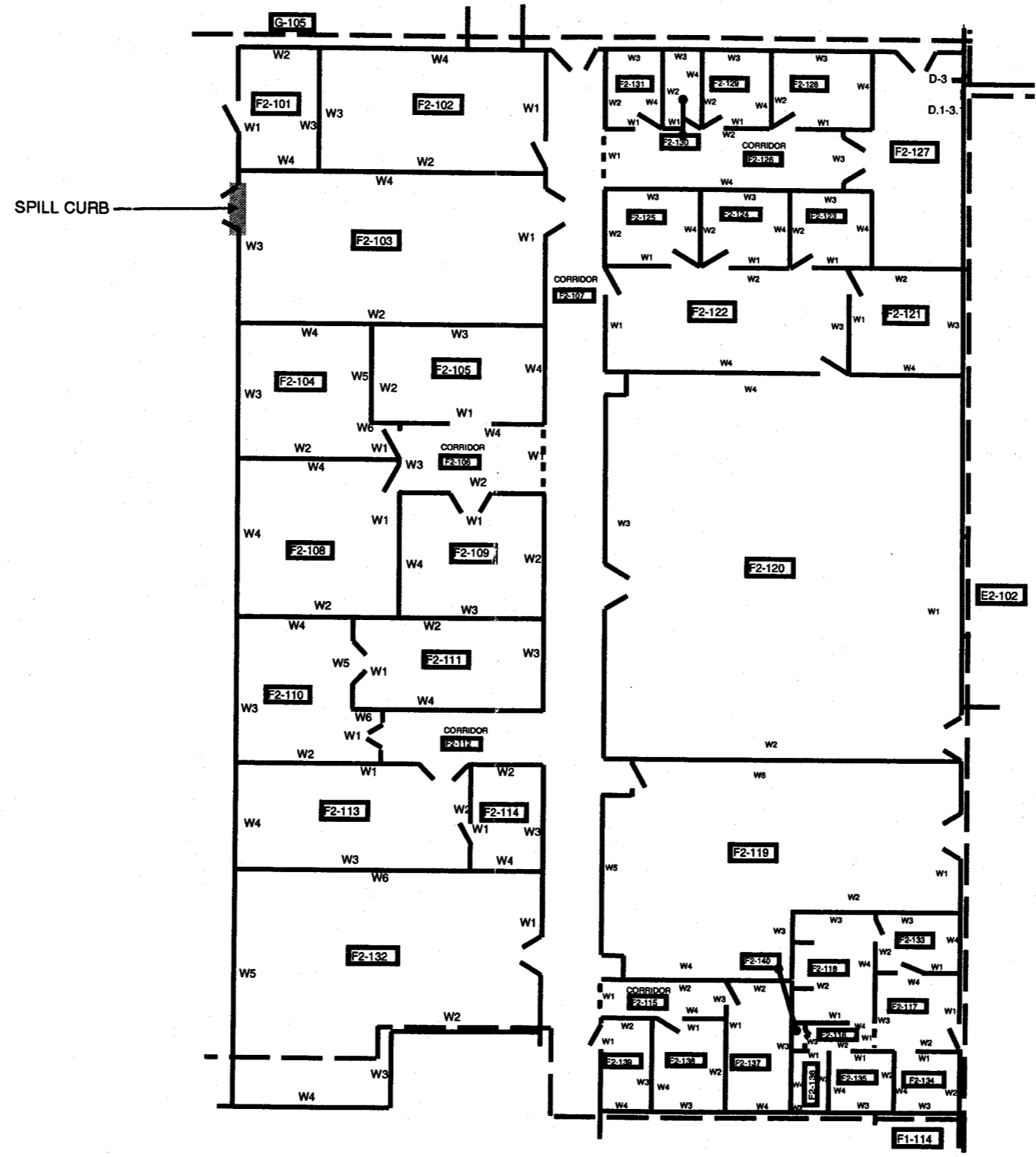


Scale: Estimated as approximately 1" = 24'

LEGEND:

- Extent of Lead-Based Paint
- R26 Railing/Handrail Number

Figure 2g
EXTENT OF LEAD-BASED PAINT
 Ft. Myers, Florida General Mail Facility
 113077-G11
 United States Postal Service
 Contract No. 475450-94-B-0322
 Work Order No. 134.00
 LBP Survey and Assessment
 November 1995



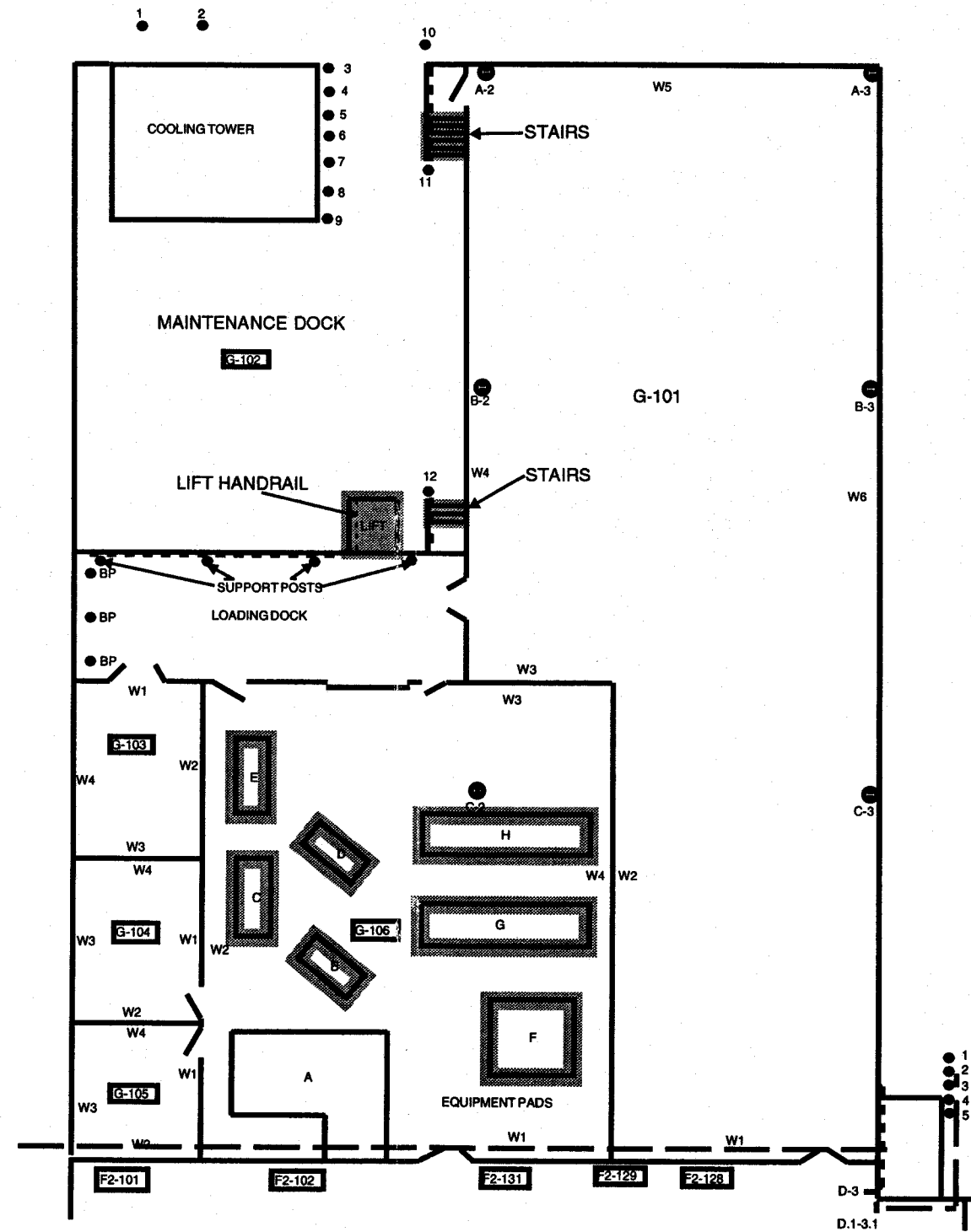
Scale: Estimated as approximately 1" = 20'

LEGEND:

- Extent of Lead-Based Paint
- Railing/Handrail Number

AREA F2

Figure 2h
EXTENT OF LEAD-BASED PAINT
 Ft. Myers, Florida General Mail Facility
 113077-G11
 United States Postal Service
 Contract No. 475450-94-B-0322
 Work Order No. 134.00
 LBP Survey and Assessment
 November 1995
 DAMES & MOORE



AREA G

Scale: Estimated as approximately 1" = 24'

LEGEND:

- Extent of Lead-Based Paint
- R28 Railing/Handrail Number

Figure 2i
EXTENT OF LEAD-BASED PAINT
 Ft. Myers, Florida General Mail Facility
 113077-G11
 United States Postal Service
 Contract No. 475450-94-B-0322
 Work Order No. 134.00
 LBP Survey and Assessment
 November 1995