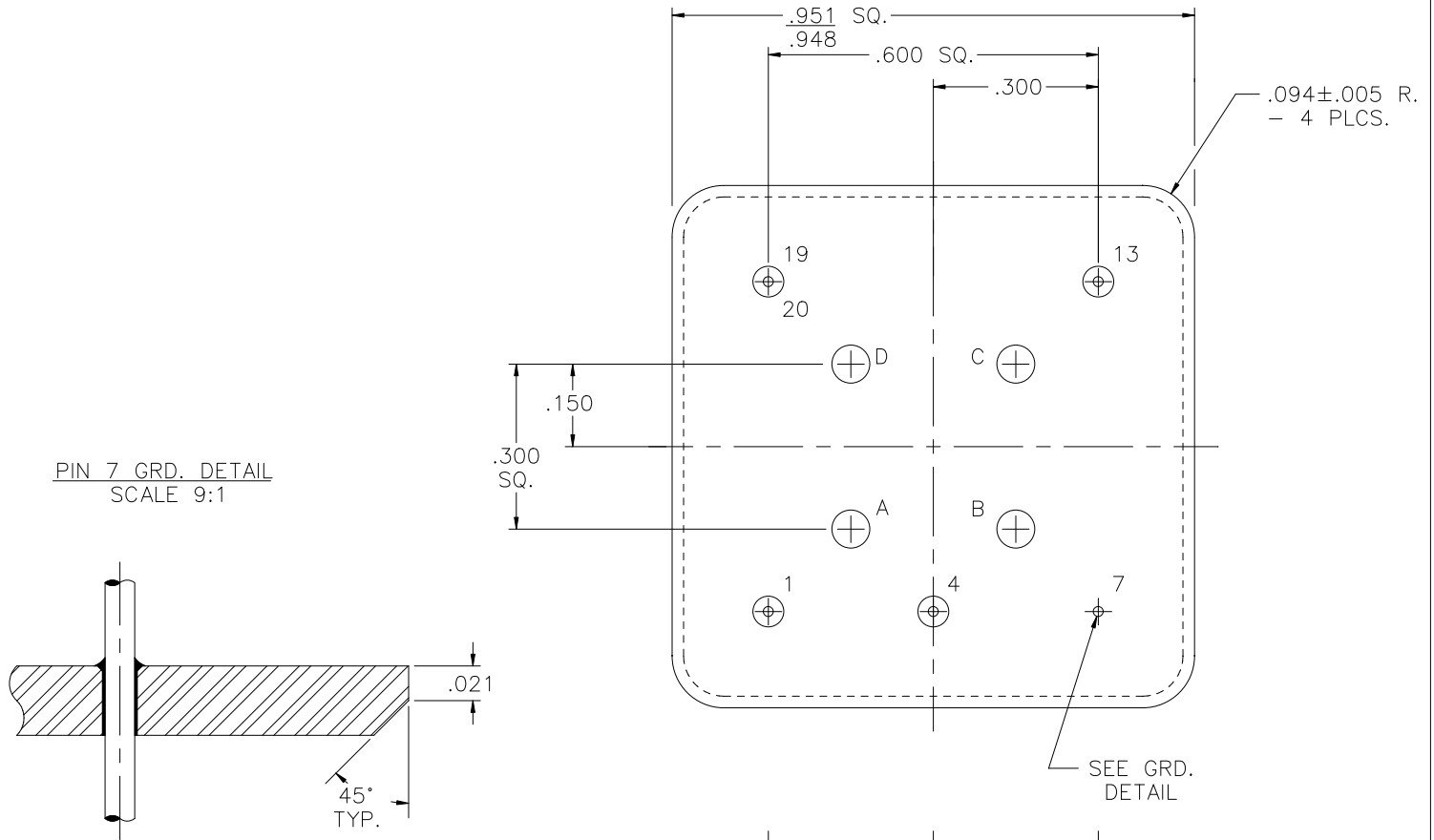


REV	DESCRIPTION OF REVISION	E.C.N.	BY	APPROVED	DATE
-----	-------------------------	--------	----	----------	------

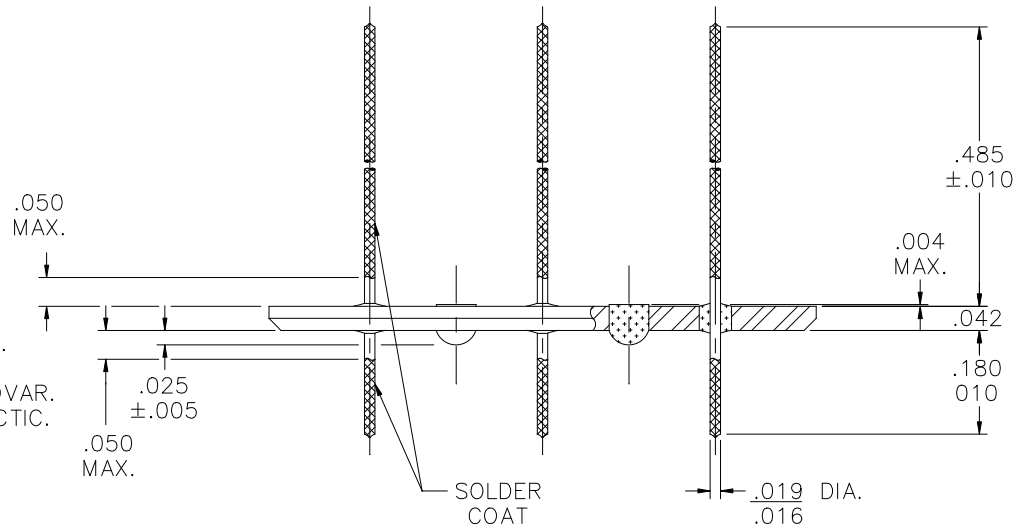



**MATERIAL:**

EYELET - 1010 C.R.S. OR EQUAL.  
 GLASS - 7052 OR EQUAL.  
 LEADS - ASTM F-15 ALLOY, KOVAR.  
 BRAZE - BT VTG AG. CU. EUTECTIC.

**PLATING:**

1. RoHS COMPLIANT ELECTROLESS NICKEL PLATE OF 100 MICRONS MINIMUM FOLLOWED BY A RoHS COMPLIANT LEAD FREE SOLDER COAT, ON POSTS AND LEADS.



DRAWN BY: E.T.W. 02-27-06		MATERIAL: SEE ABOVE		TOLERANCING PER ANSI Y14.5 .X ±.002 .XXX ±.002 .XX ±.002 ANG ±5° UNLESS OTHERWISE SPECIFIED		 6700 W. 47th TERR. MISSION, KS. 66203 TEL: 913-432-2487 FAX: 913-432-0570
CHECKED BY:	APP. SPECS BLILEY ELECTRIC P/N: A3980 REV. N/A RoHS	SUPERSEDES	NEXT ASSY	SCALE: 3:1	FINISH: UNLESS OTHERWISE SPECIFIED	
APPROVED BY:	TITLE: .950 SQ. W/.600 SP. HEADER				FILE: WA00052A	PAGE 1 of 1