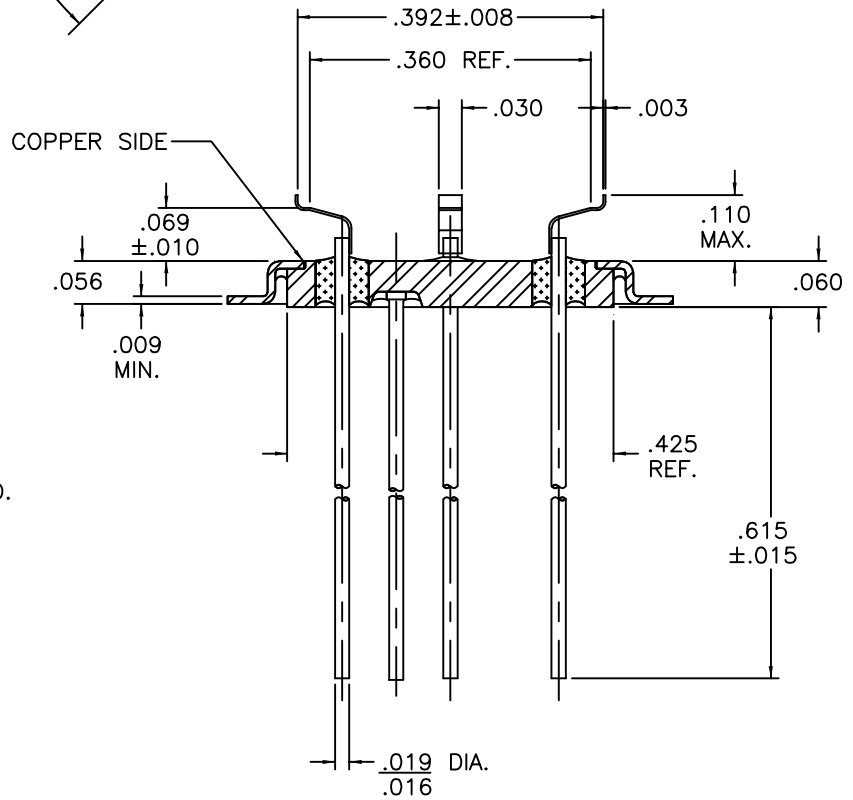
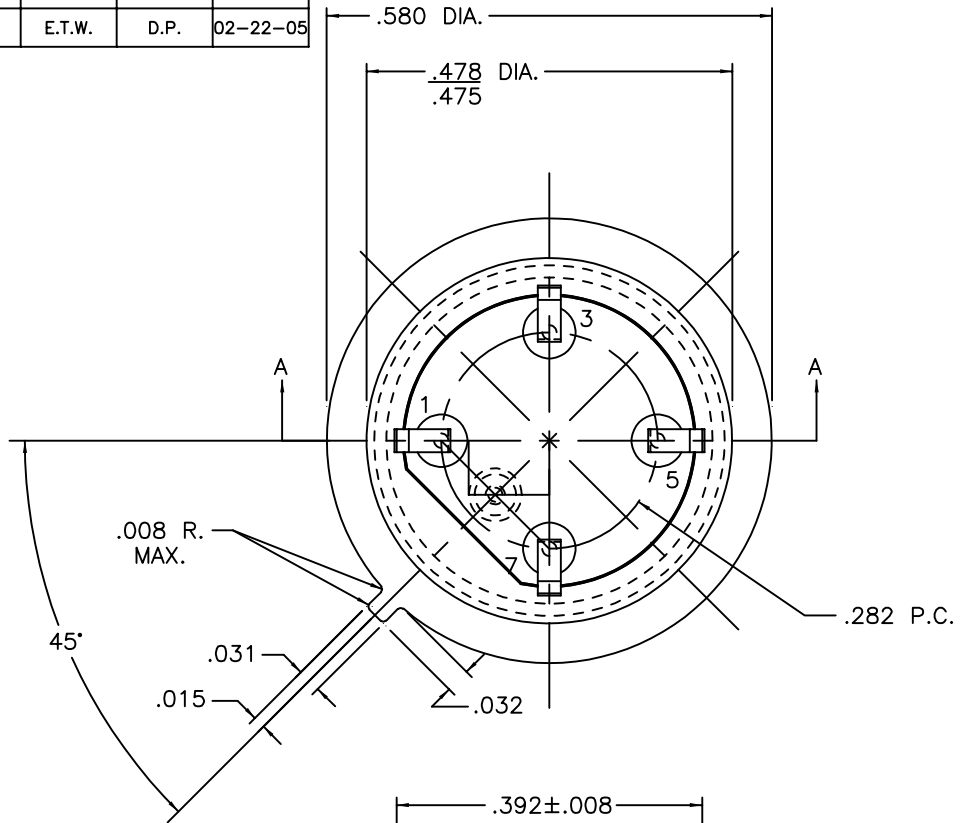


REV	DESCRIPTION OF REVISION	E.C.N.	BY	APPROVED	DATE
A	CORRECTED O.A.L. WAS .100 MAX. NOW .110 MAX.		E.T.W.	D.P.	08-08-02
B	FILE NO.: WAS EB00061.SKD		E.T.W.	D.P.	02-22-05




**MATERIAL:**

- EYELET - 1010 C.R.S. OR EQUAL.
- FLANGE - 30/70 COPPER CLAD KOVAR.
- GLASS - 7052 OR EQUAL, OPAQUE.
- LEADS - ASTM F-15 ALLOY, KOVAR.
- BRAZE - AG. CU. INDIUM ALLOY.
- MOUNT - 200 NICKEL ALLOY, 1/2 HARD.

**PLATING:**

1. ELECTROLESS NICKEL FINAL PLATE OF 100 MICROINCHES MINIMUM.
2. OPTIONAL SOLDER COAT ON LEADS ONLY PER MIL-STD QQ-S-571-D TIN LEAD ALLOY.
3. OPTIONAL GOLD FLASH .99999 PURE 24 KARAT GOLD UP TO A MAX. OF 8 MICROINCHES OVER THE ELECTROLESS NICKEL FINAL PLATE.

DRAWN BY: E.T.W. 06-14-02		MATERIAL: SEE ABOVE		TOLERANCING PER ANSI Y14.5 .X ±.005 .XXX ±.005 .XX ±.005 ANG ±5° UNLESS OTHERWISE SPECIFIED		 <b>Legacy Technologies Inc.</b> 6700 W. 47th TERR. MISSION, KS. 66203 TEL: 913-432-2487 FAX: 913-432-0570	
CHECKED BY: A.B. 06-14-02	APP. SPECS	SUPERSEDES	NEXT ASSY	SCALE: 4:1	FINISH: UNLESS OTHERWISE SPECIFIED		PART NUMBER: LP-T08-017B-CN330G
APPROVED BY: A.J.A. 06-14-02	TITLE: HC-37/U WIDE FLANGE LOW PROFILE WITH CHAIR MOUNT				FILE: HM00010	B	PAGE 1 OF 1