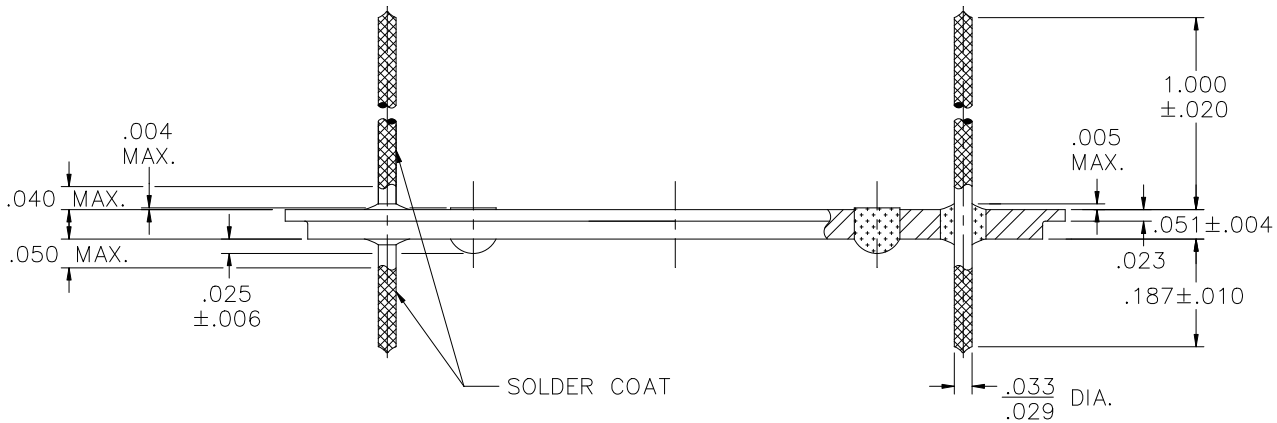
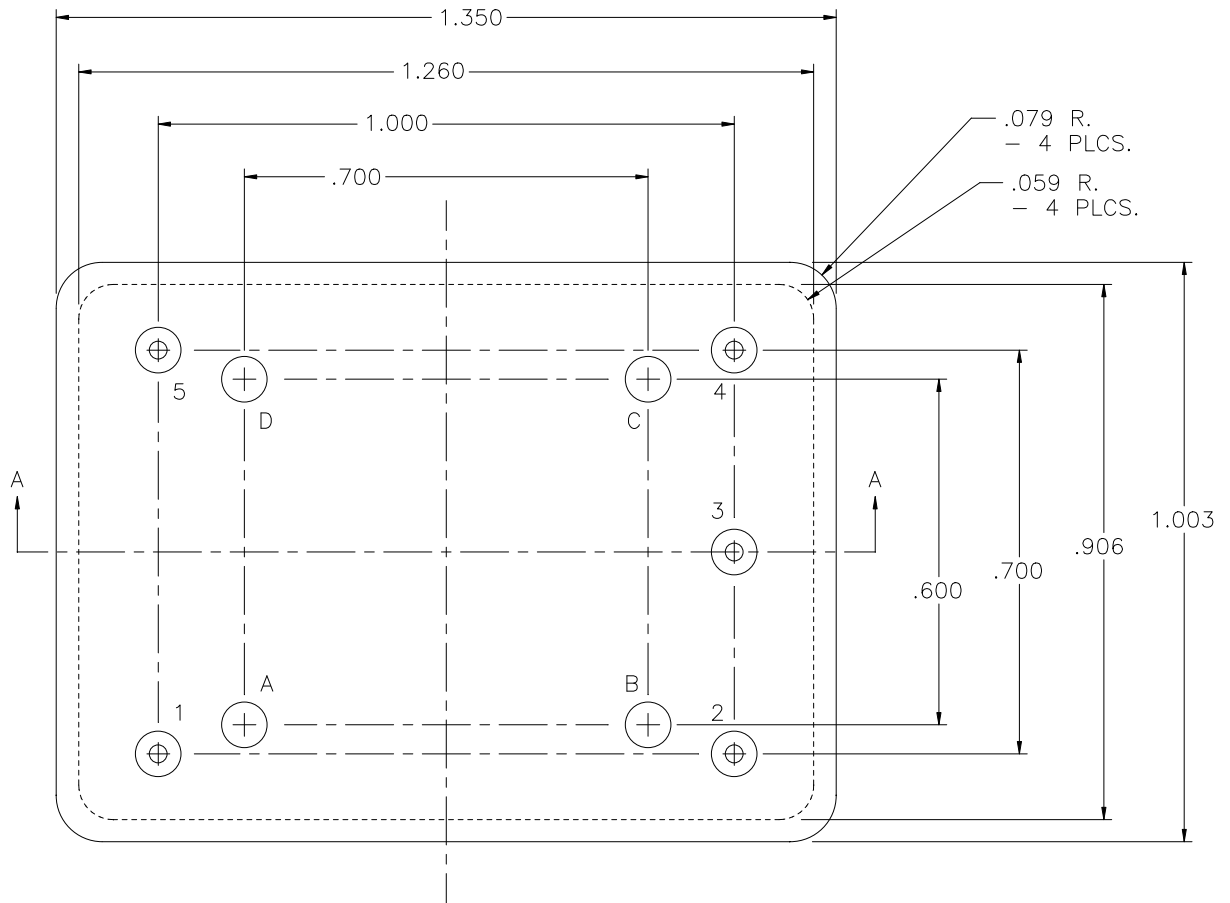


| REV | DESCRIPTION OF REVISION | E.C.N. | BY | APPROVED | DATE |
|-----|-------------------------|--------|----|----------|------|
|-----|-------------------------|--------|----|----------|------|




MATERIAL:

EYELET- 1010 C.R.S.
 GLASS - 9013 OR EQUAL.
 LEADS - ASTM F-30, 52 ALLOY.

PLATING:

1. RoHS COMPLIANT ELECTROLESS
 NICKEL PLATE OF 100 MICROINCHES
 MINIMUM FOLLOWED BY A RoHS
 COMPLIANT SOLDER COAT OF A
 TIN ALLOY, ON POSTS AND LEADS.

| | | | | | | |
|---------------------------------|---|------------|----------|--|--|--|
| DRAWN BY: E.T.W. 11-27-07 | MATERIAL: SEE ABOVE | | | TOLERANCING PER ANSI Y14.5 .X ±.005 .XXX ±.005 .XX ±.005 ANG ±5° UNLESS OTHERWISE SPECIFIED | |  Legacy Technologies Inc. 6700 W. 47th TERR. MISSION, KS. 66203 TEL: 913-432-2487 FAX: 913-432-0570 |
| | CHECKED BY: | APP. SPECS | SUPSEDES | NEXT ASSY | SCALE: N.T.S. | |
| APPROVED BY: | TITLE: 1.003 x 1.350 EUROPACK HEADER | | | | PART NUMBER: DC-1003-1350-AB RoHS PT/LT | |
| | | | | FILE: | WA00074 | PAGE 1 OF 1 |