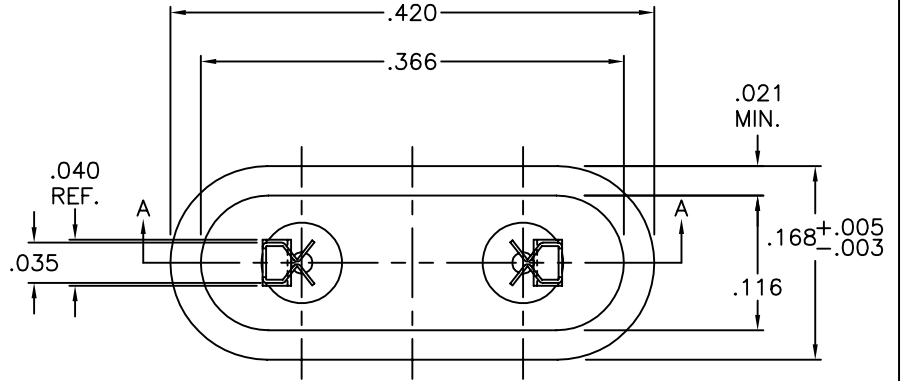
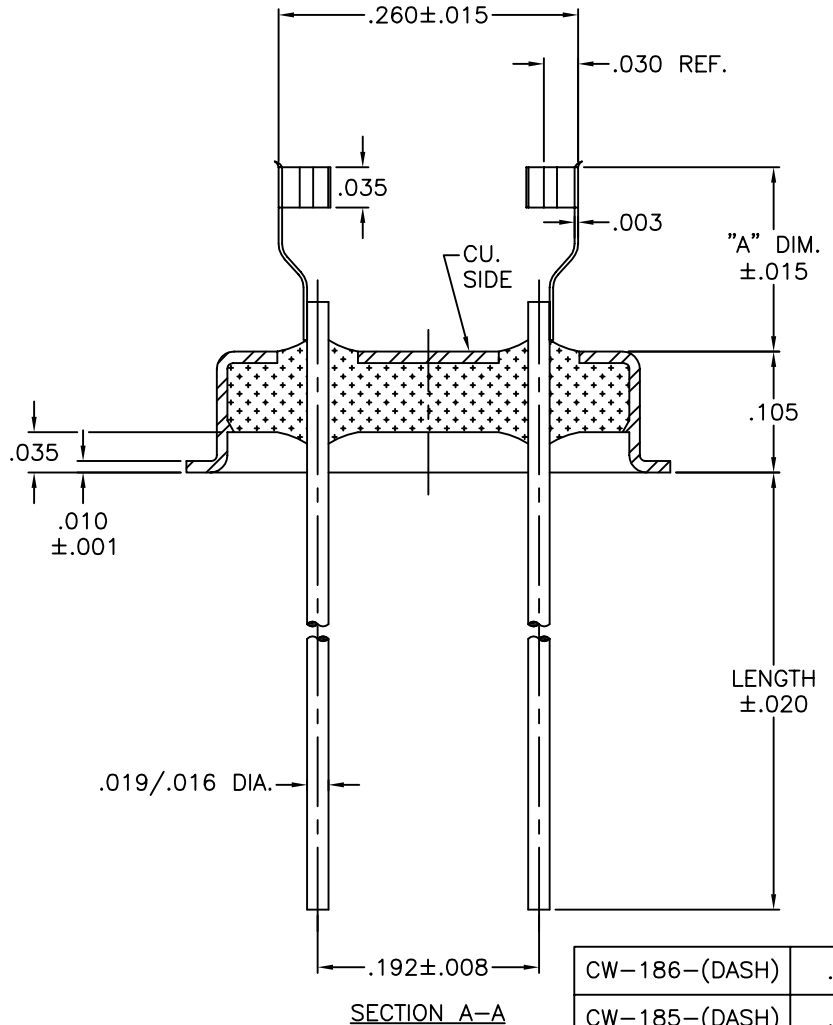


REV	DESCRIPTION OF REVISION	E.C.N.	BY	APPROVED	DATE
A	EYELET DIM. WAS .267 NOW .366		T.J.M.	E.T.W.	02-23-98
B	ADDED DIM. .021 MAX.		E.C.	E.T.W.	04-29-15



17K (SS) B.260	.137
17I (SS) B.260	.160
17H (SS) B.260	.240
17B (SS) B.260	.145
17A (SS) B.260	.312
DASH	"A" DIM.



CW-186-(DASH)	.620
CW-185-(DASH)	.520
PART NO.	LENGTH

MATERIAL:

EYELET - 30/70 COPPER CLAD KOVAR.
 GLASS - 7052 OR EQUAL.
 LEADS - ASTM F-15 ALLOY, KOVAR.
 MOUNT - STAINLESS STEEL.

PLATING:

1. ELECTROLESS NICKEL FINAL PLATE OF 100 MICROINCHES MINIMUM.
2. OPTIONAL SOLDER COAT ON LEADS ONLY PER MIL-STD QQ-S-571-D TIN LEAD ALLOY.
3. OPTIONAL GOLD FLASH .99999 PURE 24 KARAT GOLD UP TO A MAX. OF 8 MICROINCHES OVER THE ELECTROLESS NICKEL FINAL PLATE.

SECTION A-A

DRAWN BY: TINA MOSS 12-10-96	MATERIAL: SEE ABOVE	TOLERANCING PER ANSI Y14.5 .X ± .005 .XXX ± .005 .XX ± .005 ANG ± 5° UNLESS OTHERWISE SPECIFIED	6700 W. 47th TERR. MISSION, KS. 66203 TEL: 913-432-2487 FAX: 913-432-0570
CHECKED BY: E.T.W. 12-10-96	APP. SPECS SUPERSEDES CW-180 SERIES	NEXT ASSY	PART NUMBER: SEE PART NO. TABLE
APPROVED BY:	TITLE: HC-43/U W/ TAB CLIP	SCALE: 6:1	FILE: LA00015A
		FINISH: UNLESS OTHERWISE SPECIFIED	PAGE 1 of 1