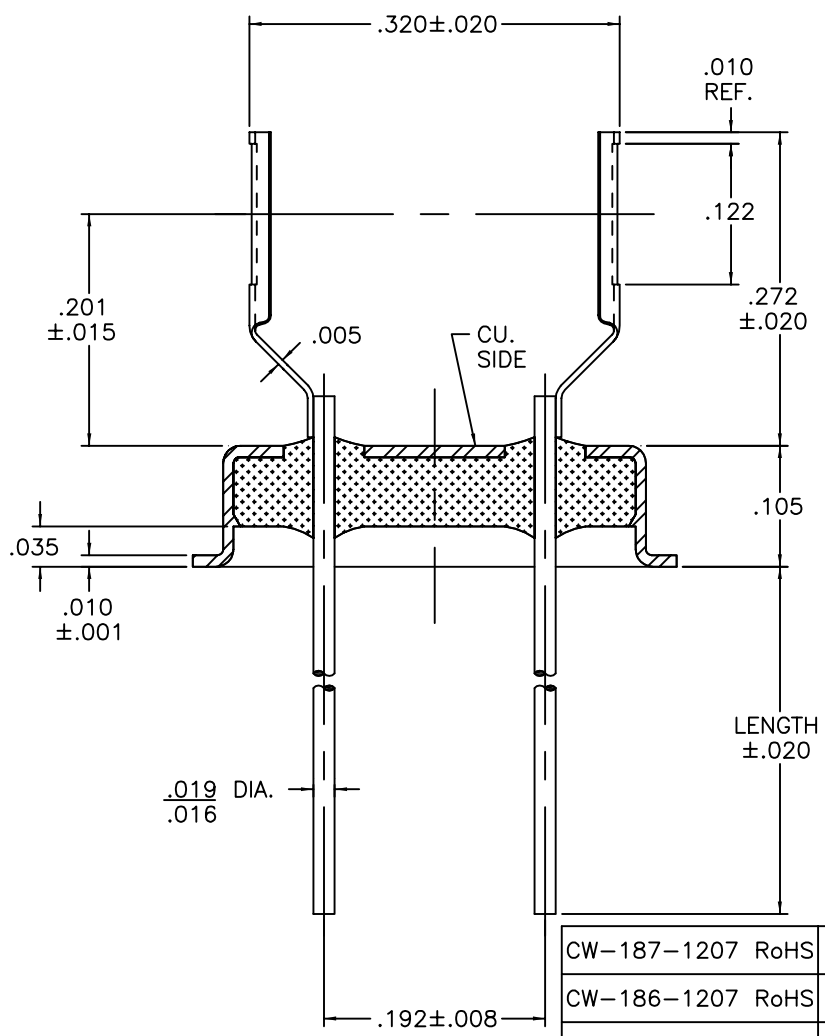
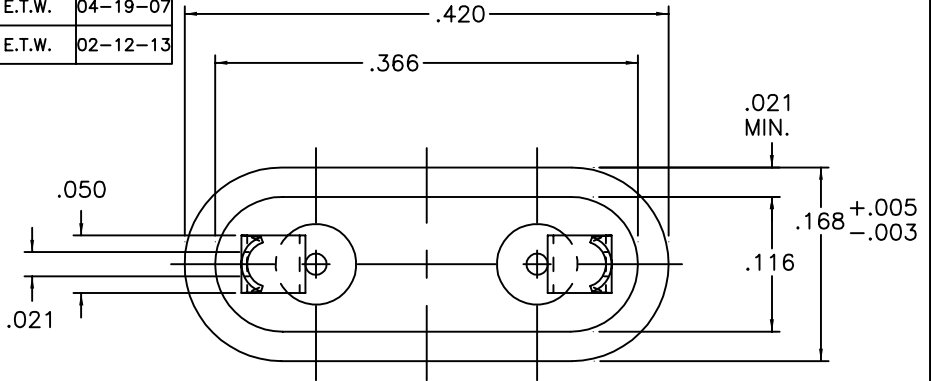


REV	DESCRIPTION OF REVISION	E.C.N.	BY	APPROVED	DATE
A	ADDED MOUNT THICKNESS		E.T.W.	E.T.W.	04-19-07
B	ADDED MOUNT MAT'L. SPEC.		E.T.W.	E.T.W.	02-12-13



MATERIAL:

EYELET - 30/70 COPPER CLAD KOVAR.
 GLASS - 7052 OR EQUAL.
 LEADS - ASTM F-15 ALLOY, KOVAR.
 MOUNT - 200 NICKEL, 1/2 HARD.

PLATING:

1. OPTION: RoHS COMPLIANT ELECTROLESS NICKEL PLATE OF 100 MICROINCHES MINIMUM FINAL PLATE.
2. OPTION: RoHS COMPLIANT ELECTROLESS NICKEL PLATE OF 100 MICROINCHES MINIMUM FOLLOWED BY A RoHS COMPLIANT LEAD FREE SOLDER COAT, ON LEADS ONLY.
3. OPTION: RoHS COMPLIANT ELECTROLESS NICKEL PLATE OF 100 MICROINCHES MINIMUM FOLLOWED BY A GOLD FLASH OF .99999 PURE 24 KART GOLD UP TO A MAX. OF 8 MICROINCHES.

CW-187-1207 RoHS	.770
CW-186-1207 RoHS	.620
CW-185-1207 RoHS	.520
CW-180-1207 RoHS	1.520
PART NO.	LENGTH

DRAWN BY: E.T.W. 01-17-06	MATERIAL: SEE ABOVE	TOLERANCING PER ANSI Y14.5 .X ± .005 .XXX ± .005 .XX ± .005 ANG ± 5° UNLESS OTHERWISE SPECIFIED	<p>6700 W. 47th TERR. MISSION, KS. 66203 TEL: 913-432-2487 FAX: 913-432-0570</p>
CHECKED BY: E.T.W. 01-17-06	APP. SPECS	SUPERSEDES	
APPROVED BY:	TITLE: HC-43/U W/ L.T.I. KANE MOUNT 1207 L.T.I. / KANE P/N: 443-????-1207-919 RoHS FOR .330 - .340 DIA. BLANK	SCALE: 6:1	FINISH: UNLESS OTHERWISE SPECIFIED <input checked="" type="checkbox"/>
PART NUMBER: SEE TABLE			B
FILE: LE0026C	PAGE: 1 of 1		