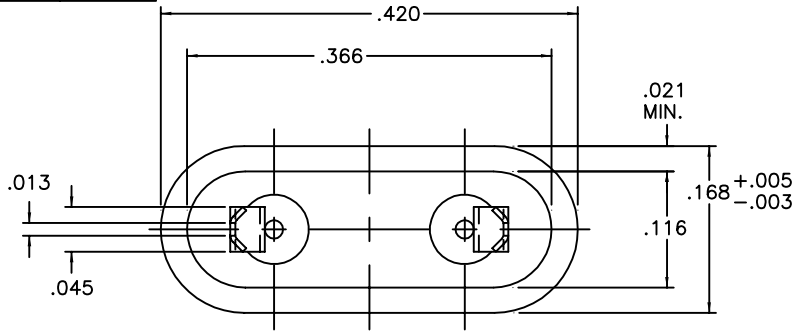
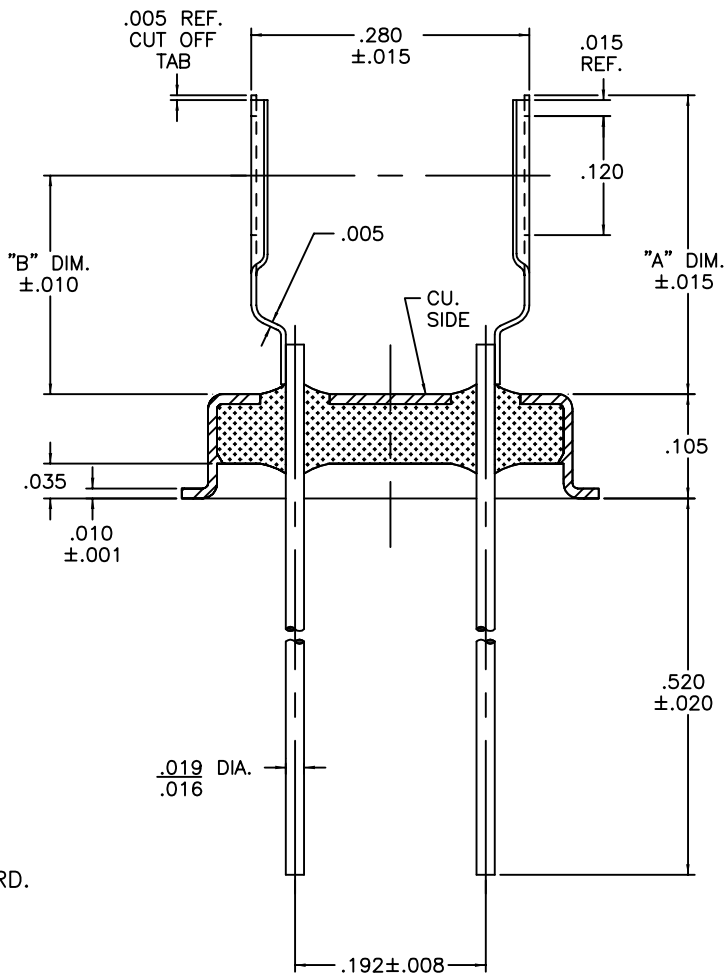


REV	DESCRIPTION OF REVISION	E.C.N.	BY	APPROVED	DATE
A	SCALED PRINT		E.T.W.	E.T.W.	01-11-02
B	ADJUSTED DIM. TO NORMAL DIM. OF SAMPLES		E.T.W.	E.T.W.	01-17-02



WSM021K B.280	.255	.175
WSM021C B.280	.275	.195
WSM021A B.280	.300	.220
DASH	"A" DIM.	"B" DIM.




**MATERIAL:**

EYELET - 30/70 COPPER CLAD KOVAR.  
 GLASS - 7052 OR EQUAL.  
 LEADS - ASTM F-15 ALLOY, KOVAR.  
 MOUNT - 301 STAINLESS STEEL, SPRING HARD.

**PLATING:**

1. ELECTROLESS NICKEL FINAL PLATE OF 100 MICROINCHES MINIMUM.
2. OPTIONAL SOLDER COAT ON LEADS ONLY PER MIL-STD QQ-S-571-D TIN LEAD ALLOY.
3. OPTIONAL GOLD FLASH .99999 PURE 24 KARAT GOLD UP TO A MAX. OF 8 MICROINCHES OVER THE ELECTROLESS NICKEL FINAL PLATE.

DRAWN BY: E.T.W. 01-11-02	MATERIAL: SEE ABOVE	TOLERANCING PER ANSI Y14.5 .X ±.005 .XXX ±.005 .XX ±.005 ANG ±5° UNLESS OTHERWISE SPECIFIED		 <p>6700 W. 47th TERR. MISSION, KS. 66203 TEL: 913-432-2487 FAX: 913-432-0570</p>	
CHECKED BY: E.T.W. 01-11-02	APP. SPECS	SUPERSEDES	NEXT ASSY CW-185		PART NUMBER: CW-185- (SEE TABLE)
APPROVED BY:	TITLE: HC-43/U W/ SLOT MOUNT FOR AROUND .295 TO .312 DIA. BLANK			FILE: LA00018H	PAGE 1 of 1