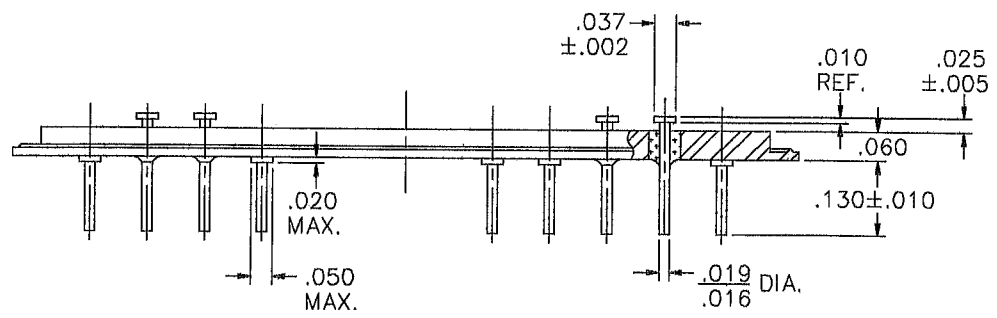
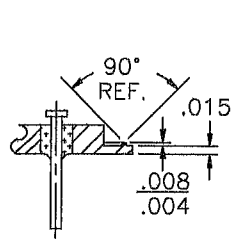
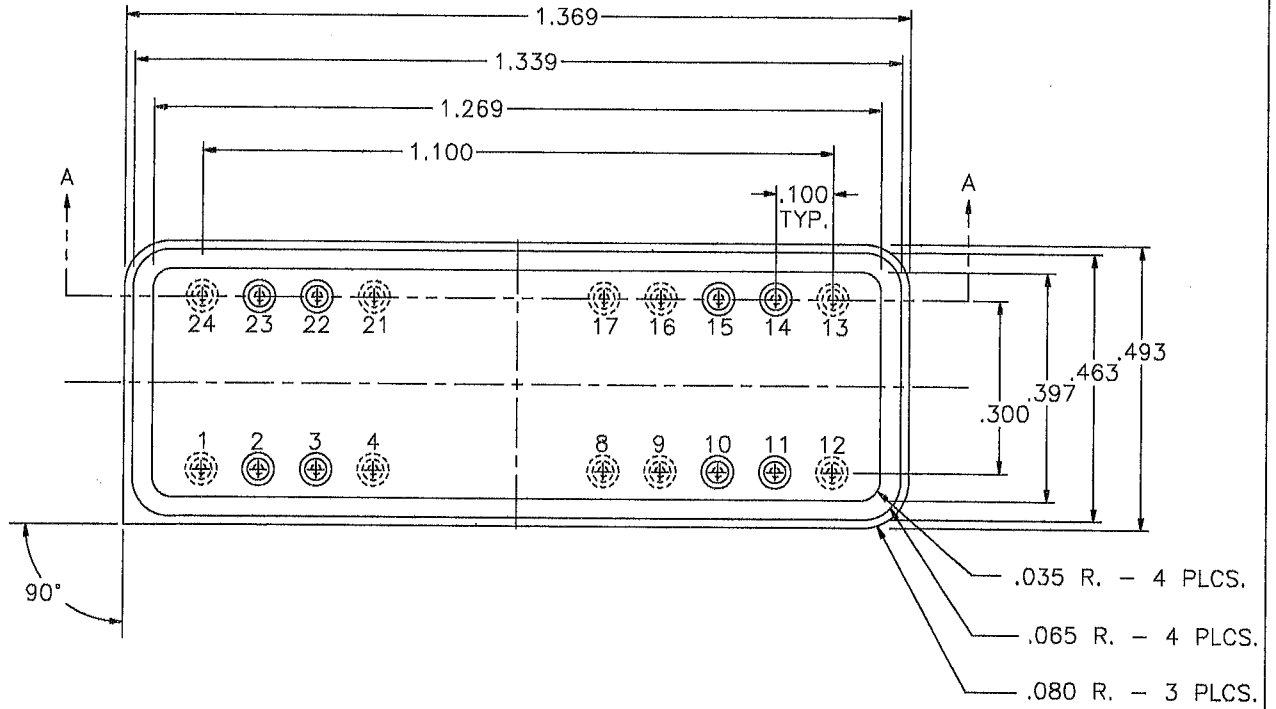


| REV | DESCRIPTION OF REVISION | E.C.N. | BY | APPROVED | DATE |
|-----|-------------------------|--------|----|----------|------|
|-----|-------------------------|--------|----|----------|------|



**MATERIAL:**

EYELET- 1010 C.R.S. OR EQUAL.  
 GLASS - 7052 OR EQUAL.  
 LEADS - ASTM F-15 ALLOY, KOVAR.  
 BRAZE - BT VTG AG. CU. EUTECTIC.

**PLATING:**

1. ELECTROLESS NICKEL FINAL PLATE OF 100 MICROINCHES MINIMUM.
2. OPTIONAL SOLDER COAT ON LEADS ONLY PER MIL-STD QQ-S-571-D TIN LEAD ALLOY.
3. OPTIONAL GOLD FLASH .99999 PURE 24 KARAT GOLD UP TO A MAX. OF 8 MICROINCHES OVER THE ELECTROLESS NICKEL FINAL PLATE.

|                                    |                             |  |           |  |
|------------------------------------|-----------------------------|--|-----------|--|
| DRAWN BY:<br>TINA MOSS<br>06-24-96 | MATERIAL:<br>SEE ABOVE      | TOLERANCING PER ANSI Y14.5<br>.X ±.005 .XXX ±.005<br>.XX ±.005 ANG ±5°<br>UNLESS OTHERWISE SPECIFIED |           | TITLE:<br>.493 x 1.370 18 PIN D.I.P.<br>HEADER |
| CHECKED BY:<br>E.T.W.<br>06-24-96  | APP. SPECS                  | SUPERSEDES<br>RR-493-1370  | NEXT ASSY | DRAWING NUMBER:<br>HS-RR-493-1370-C            |
| APPROVED BY:                       | <b>H.E.S. INTERNATIONAL</b> |  |           | SCALE: 3:1                                     |
|                                    |                             |  |           | FINISH:<br>UNLESS OTHERWISE SPECIFIED          |