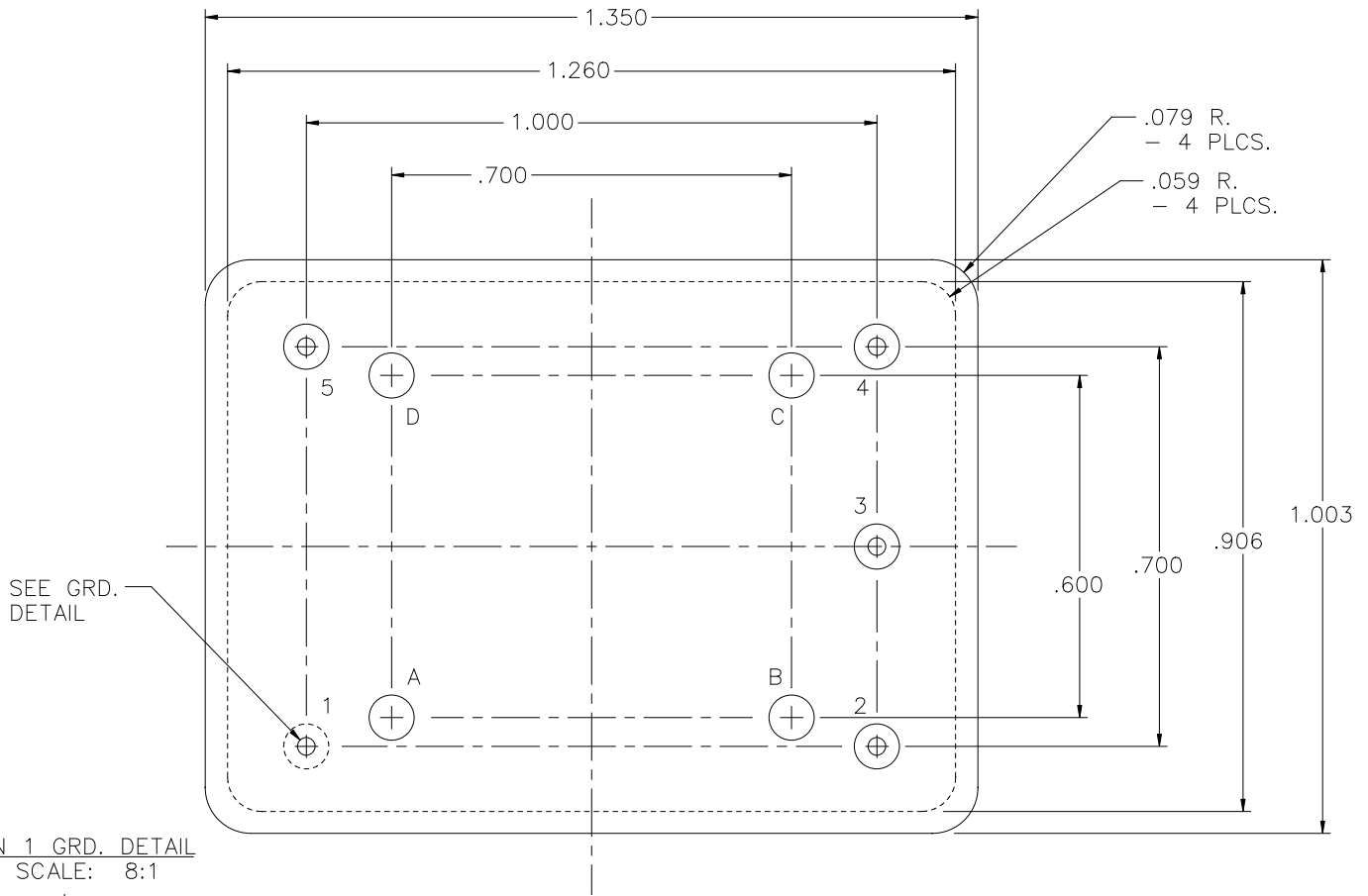
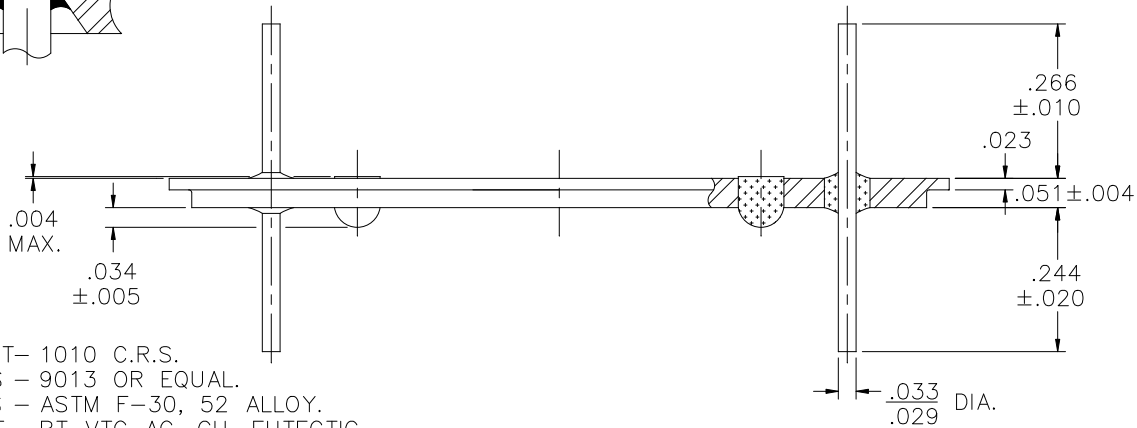
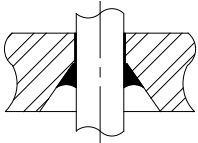


REV	DESCRIPTION OF REVISION	E.C.N.	BY	APPROVED	DATE
A	ADJUSTED HEADER DIM.		T.J.M.	E.T.W.	01-10-97
B	GRD. PIN WAS 1 R. WAS .069		T.J.M.	E.T.W.	05-22-97
C	S.O. WERE .026±.006	0070	T.J.M.	A.J.A.	09-03-97



PIN 1 GRD. DETAIL
SCALE: 8:1




MATERIAL:

EYELET- 1010 C.R.S.
GLASS - 9013 OR EQUAL.
LEADS - ASTM F-30, 52 ALLOY.
BRAZE - BT VTG AG. CU. EUTECTIC.

PLATING:

1. PER MIL-STD QQ-S-571-D TIN
LEAD ALLOY.

DRAWN BY: TINA MOSS 12-05-96	MATERIAL: SEE ABOVE			TOLERANCING PER ANSI Y14.5 .X ±.005 .XXX ±.005 .XX ±.005 ANG ±5° UNLESS OTHERWISE SPECIFIED		 6700 W. 47th TERR. MISSION, KS. 66203 TEL: 913-432-2487 FAX: 913-432-0570
CHECKED BY: E.T.W. 12-05-96	APP. SPECS	SUPERSEDES	NEXT ASSY	SCALE: N.T.S.	FINISH: UNLESS OTHERWISE SPECIFIED	
APPROVED BY:	TITLE: 1.003 x 1.350 EUROPACK HEADER				FILE: WA00005	PAGE 1 OF 1