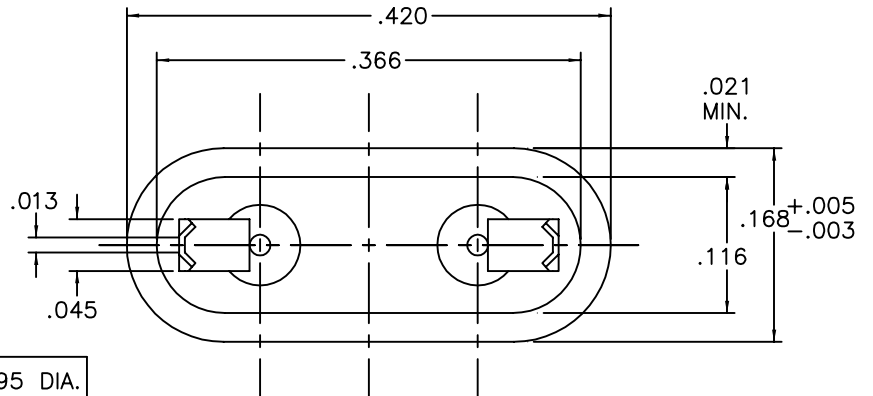
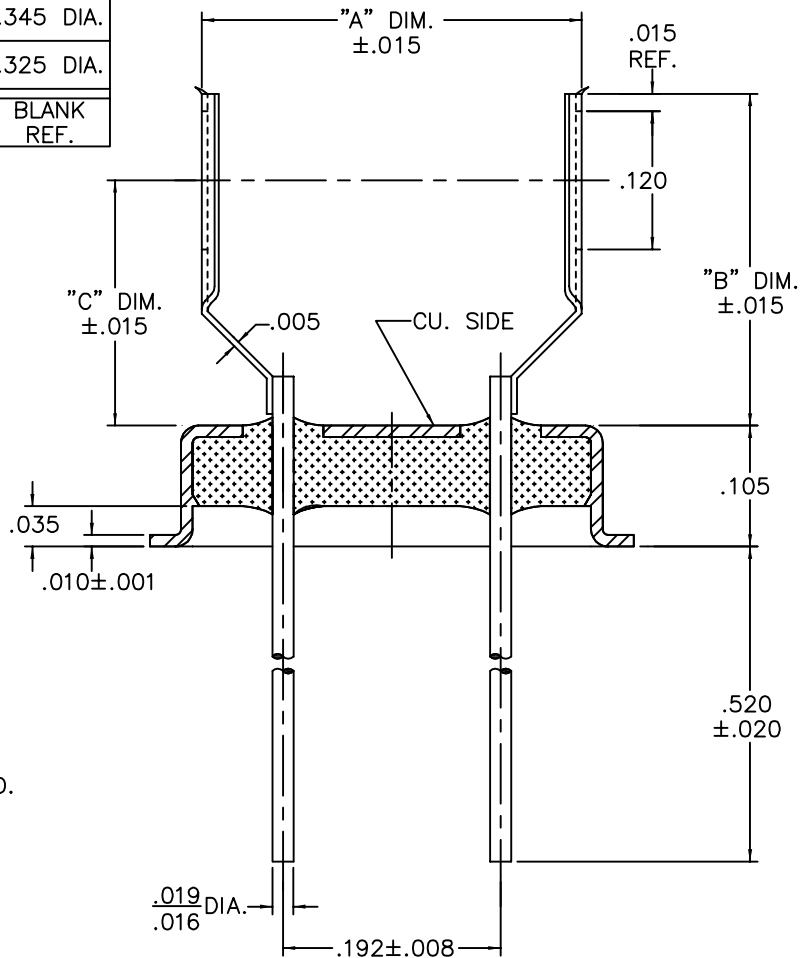


REV	DESCRIPTION OF REVISION	E.C.N.	BY	APPROVED	DATE
D	UPDATE TO CAD	0010	T.J.M.	E.T.W.	04-19-96



WSM021A B.280	.280	.295	.220	.295 DIA.
WSM021A B.330	.330	.278	.203	.345 DIA.
WSM021A B.312	.312	.288	.213	.325 DIA.
DASH	"A" DIM.	"B" DIM.	"C" DIM.	BLANK REF.



**MATERIAL:**

EYELET - 30/70 COPPER CLAD KOVAR.  
 GLASS - 7052 OR EQUAL.  
 LEADS - ASTM F-15 ALLOY, KOVAR.  
 MOUNT - 301 STAINLESS STEEL, SPRING HARD.

**PLATING:**

1. ELECTROLESS NICKEL FINAL PLATE OF 100 MICROINCHES MINIMUM.
2. OPTIONAL SOLDER COAT ON LEADS ONLY PER MIL-STD QQ-S-571-D TIN LEAD ALLOY.
3. OPTIONAL GOLD FLASH .99999 PURE 24 KARAT GOLD UP TO A MAX. OF 8 MICROINCHES OVER THE ELECTROLESS NICKEL FINAL PLATE.

DRAWN BY: TINA MOSS 04-19-96	MATERIAL: SEE ABOVE	TOLERANCING PER ANSI Y14.5 .X ± .005 .XXX ± .005 .XX ± .005 ANG ± 5° UNLESS OTHERWISE SPECIFIED		<p>6700 W. 47th TERR. MISSION, KS. 66203 TEL: 913-432-2487 FAX: 913-432-0570</p>	PART NUMBER: CW-185- (SEE TABLE)	D
CHECKED BY: E.T.W. 04-19-96	APP. SPECS	SUPERSEDES	NEXT ASSY			
APPROVED BY:	TITLE: HC-43/U W/ SLOT MOUNT			FILE: LA00006B	PAGE: 1 of 1	