



HEARTLAND SOCIAL WORK

VIRTUAL CONFERENCE



March 4 - 25, 2022



SHAPING HEALTH CARE

Impact your community with an advanced education.

The Clarkson College Community Health program offers certificates in specialized areas to prepare you to address challenges and opportunities within particular fields.

Choose from four certificate options.

- › Gerontology
- › Women's Health
- › Public Health
- › Human Services

Experience the benefits of an education from Clarkson College.

- › Complete courses 100% online
- › Earn your certificate in as little as one year
- › Choose part- or full-time options

Learn more at
ClarksonCollege.edu/Community-Health

 **Clarkson College**
Prepare to be the **best**.

BY 2025 THERE WILL BE A
SHORTFALL OF OVER
10,000 SOCIAL WORKERS.

**OKLAHOMA
NEEDS MORE
SOCIAL WORKERS.**



THE TIME IS RIGHT
FOR SOCIAL WORK



SOCIALWORK.OU.EDU

Master of Social Work
University of Oklahoma



COLLEGE OF ARTS AND SCIENCES
ANNE AND HENRY ZARROW
SCHOOL OF SOCIAL WORK
The UNIVERSITY of OKLAHOMA

Table of Contents



THE TIME IS RIGHT
FOR SOCIAL WORK

Welcome Letter.....	4
Learn more about CEUs.....	5
NASW Membership.....	7
Conference Schedule.....	9
Speaker Bios.....	14
Upcoming NASW Events.....	23



**HEARTLAND
SOCIAL WORK**
VIRTUAL CONFERENCE



The Oklahoma Tobacco Helpline is FREE and available 24/7. We provide tools and support to help you quit tobacco your own way — and we never lecture or judge. Want advice, support and free patches, gum or lozenges?

Visit OKhelpline.com for resources, services, and information on how to quit tobacco for yourself and how to integrate services into your practice to help your clients live a healthier lifestyle.

Oklahoma Tobacco Helpline

1 800

QUIT NOW

1-800-784-8669

OKhelpline.com



TSET

TOBACCO SETTLEMENT
ENDOWMENT TRUST

Welcome

The Heartland Conference is the must-attend event of the year for social workers. The conference brings together participants from across Kansas, Oklahoma and across the nation for 7 days of learning, laughter, and networking. With dynamic speakers, cutting-edge workshops, and engaging special presentations, attendees have the opportunity to earn 42 continuing education credits during the event with the goal to increase the professional growth and development of social workers across the state. Each year, social work ethics is the most requested session. In response, we have interwoven multiple offerings dedicated to ethics in order to provide a more directed application of NASW's Code of Ethics.

To meet the growing needs of our attendees, we have expanded this year's virtual seminar to seven days, March 4th, 5th, 11th, 12th, 18th, 19th, and 25th. Two sessions will be held each morning, a break will be included to accommodate lunch, followed by two sessions in the afternoon. Conference days start at 9:00 am and end at 4:00 pm. For additional information on schedules, please refer to the conference schedule included in our conference guide.

Your support by attending our events directly funds the NASW-Oklahoma and NASW-Kansas' student outreach, legislative advocacy, social work policy, and events and programs throughout the year.

Thank you for choosing to attend the 2022 Heartland Conference.

Sincerely

Becky Fast, MSW, LCSW

Chapter Executive, NASW-Kansas

Steven W. Pharris, LCSW, JD

Chapter Executive, NASW-Oklahoma

Let's Talk CEUs...

NASW is committed to helping social workers meet their professional development needs. This year, all of our sessions run over the course of seven days in order to allow attendees with the option of choosing their pathway to obtain the necessary hours for their license.

What programs are NASW CEUs approved for?

NASW-OK CEUs are approved for social workers in 38 states, including the Oklahoma LBSW, LMSW, LCSW-Admin and LCSW-Clinical. We also provide CEU approval for LPCs, LMFT's, LBCs, Certified Behavioral Health Case Managers, and Wellness Coaches. NASW-Oklahoma is also an approved provider for Licensed Alcohol and Drug Counselors (LADC).

NASW-KS CEUs are approved for social work licenses in Kansas and across the country in 38 states.

How does attendance work?

During each session, a roll call will be taken. It is important the name of the webinar matches the name used during registration.

How do evaluations work?

Evaluations links will be sent after each day of the conference. CEUs are issued only in the name of the person registered and cannot be transferred. **CEU certificates will have the Title of the Presentation, Presenter, our Provider Numbers, and the length of session, and type of CEU's.** This will be your documentation for the official CEUs needed.



Let's Talk CEUs...

What if I need a duplicate CEU?

Due to the payment processing systems, duplicate CEUs cannot be easily issued. You can replace your CEUs by sending an email to ceu.naswok@socialworkers.org with your full name, name of event, the dates of attendance and a written request asking for CEU certificates due to the loss of your CEU certificates. After completion, a follow-up e-mail will be sent with the identified CEUs or asking for additional information. A small fee will be required for each CEU needing replaced.

Why choose NASW for your educational needs?

Your attendance at our event is a year long investment. Our programs and services are provided by the generosity of social workers, agencies, and the schools of social work across of Oklahoma and Kansas.

Trusting NASW to deliver programs and services to enhance your professional development is a responsibility not taken lightly by NASW. The costs of events assists social work students and underwrites programming and provides legislative advocacy for laws effecting the profession.

NASW is committed to expanding social work opportunities across the state. We rely on your support to keep NASW strong and make our impact today, and tomorrow, possible.

Earn your certificate
100% online.

Advance your education with certificates in specialized areas that are tailored to help you meet your professional goals.

- › Gerontology
- › Women's Health
- › Public Health
- › Human Services

Learn more at
ClarksonCollege.edu/Community-Health



**SHAPING
HEALTH
CARE**

 **Clarkson College**
Prepare to be the best.



The UNIVERSITY of OKLAHOMA

Anne and Henry Zarrow School of Social Work

As a social worker, you are a skilled professional who came to the profession to make a difference to those in need. To be the best in your profession requires access to cutting-edge ideas, the most up-to-date information and research, relevant and timely continuing education opportunities, and the highest-quality resources available to social workers.

Automatic Chapter Membership

Get a local connection to the profession.

Ethics, HIPAA, Legal, & Malpractice Resources

Reduce your risk of complaints and violations.
Save on professional liability insurance.

Free & Discounted Continuing Education

Fulfill license requirements.

Practice Support & Self Care

Save on practice management software, office supplies, and entertainment.

Publications, Tips, & Insights

Enhance your knowledge in social work, do your job better, and champion social change.

Online Research Library

Access more than 25 social science and health databases.

Advocacy and Political Action

Inherent to our mission, NASW-Oklahoma advocates for legislation that advances the social work profession.

Discounts on all CEU Programs and Licensing Test Prep Courses

NASW-Oklahoma hosts many continuing education programs throughout the year, all at a discount to you.

Clinical Alerts & Consultation

For those in clinical roles, NASW-OK's Director is available to consult with members and answer questions related to insurance, licensing, and more.

Social Work Voice Magazine

Launched in 2020, Social Work Voice is a magazine produced by the Chapter and delivered to your mailbox four times each year. Each issue is packed with information and updates related to the Chapter's legislative advocacy and political action, member spotlights, managed care, clinical practice, and continuing education.

Career Services

NASW-OK has resources available to assist members with job searching and career development. These services include cover letter and resume reviews, and individualized, one-on-one e-consultation and coaching.

Member-to-Member Supervision

Helps LCSW members obtain LICSW supervision not provided at their work sites.

Your NASW membership can provide you with all of these things.
Questions about membership? Contact the chapter: director.naswok@socialworkers.org.



NASWTM

Assurance Services

Where Social Workers Come FirstTM

What is the only professional social worker liability insurance that will provide assistance licensure board disciplinary hearings and civil suits?

ASI is the best provider of liability insurance for social workers.

Go to **<https://naswassurance.org/>** to learn more for your professional and personal insurance needs.



Conference Schedule

March 4

8:45 AM - 9:00 AM

**Welcome by NASW-Oklahoma
President**

Dr. Deborah Johnson, MSW, LMSW
NASW-Oklahoma President
.5 General CEUs

09:00 AM - 10:30 AM

**The Family Cycle: An Activity to
Enhance Parents'
Mentalization in Children's
Mental Health Treatment**

Victoria Stob, LCSW
Yale University
1.5 CEUs approved for all professions

10:40 AM - 12:10 PM

**Macro Practice is
Social Work Practice**

Victor Manillo, LCSW
NASW-California
1.5 CEUs approved for all professions

12:50 PM - 02:20 PM

Social Work Ethics & Malpractice

Terrie Fritz, MSW, LCSW
Clinical Social Worker
1.5 CEUs approved for all professions

02:30 PM - 04:00 PM

**Human Trafficking & Race
Linking the Past to the Present**

Crystal Rose-Bennett, LMSW
Social Worker
1.5 CEUs approved for all professions

March 5

08:45 AM - 9:00 AM

**Welcome by NASW-Kansas
President**

Elizabeth Pflazgraf, LMSW
NASW-Kansas President

9:00 AM - 10:30 AM

Ethics & Self Stewardship

Amber Jewell, LMSW
Social Worker
1.5 CEUs approved for all professions

10:40 AM - 12:10 PM

**Military Suicide Assessments and
Interventions**

Charles Cobble, MSSW, LCSW
Clinical Social Worker
1.5 CEUs approved for all professions

12:50 PM - 02:20 PM

**Know Your Rights! Know Your
Options! Safety Training Part 1**

Cheryl Calhoun, LMSW, LMAC
Kansas State University
1.5 General CEUs

02:30 PM - 04:00 PM

**Know Your Rights! Know Your
Options! Safety Training Part 2**

Cheryl Calhoun, LMSW, LMAC
Kansas State University
1.5 General CEUs

March 11

09:00 AM - 10:30 AM

**Bowen Family Systems Theory: A
Different Lens on Self, Social Work,
and Families**

Margaret Otto, LSCSW
Director and Co-Founder of the KC
Center of Family Systems
1.5 CEUs approved for all professions

10:40 AM - 12:10 PM

**Socially Awkward? The Nuances of
Assessment and Treatment with
ADHD and Autism**

Dr. Tami Radohl, Ph.D., LSCSW
Chair, Social Work, Associate Professor
Rhonda Weimer, LCSW
MSW Program Director, Department of
Social Work
Fort Hays State University
1.5 CEUs approved for all professions

12:50 PM - 02:20 PM

**Parental Substance Abuse and Public
Child Welfare: What the Research is
Telling Us**

Dr. Jody Brook, MSW, Ph.D., LCSW
Associate Professor, University of Kansas
University of Kansas
1.5 CEUs approved for all professions

1.5 CEUs approved for all professions

02:30 PM - 04:00 PM

**Cognitive Behavioral Therapy for
Eating Disorders**

Tina Lai, LMSW
Social Worker
1.5 CEUs approved for all professions

Conference Schedule

March 12

09:00 AM - 10:30 AM
Do the Right Thing! Ethics for Daily Life in Our COVID-19 World, Part 1

Wendy Funk-Schrag, MSW, LCSW
Vice President State Government Affairs
1.5 CEUs approved for all professions

10:40 AM - 12:10 PM
Do the Right Thing! Ethics for Daily Life in Our COVID-19 World, Part 2

Wendy Funk-Schrag, MSW, LCSW
Vice President State Government Affairs
1.5 CEUs approved for all professions

12:50 PM - 02:20 PM
Know Your Rights! Know Your Options! Safety Training Part 3

Cheryl Calhoun, LMSW, LMAC
Kansas State University
1.5 General CEUs

02:30 PM - 04:00 PM
Know Your Rights! Know Your Options! Safety Training Part 4

Cheryl Calhoun, LMSW, LMAC
Kansas State University
1.5 General CEUs

March 18

09:00 AM - 10:30 AM
Oklahoma's Tribal Opioid Response Grant and Integrative Model in a MAT Clinic

Ashley Lincoln, MSW
Dr. Anna Miller, MD
1.5 CEUs approved for all professions

10:40 AM - 12:10 PM
Resuscitate Me: The Implementation of Mindfulness Practice

Phelica Glass, LCSW, GCCAC, FAAGC, CSOTP
Clinical Social Worker
1.5 CEUs approved for all professions

12:50 PM - 02:20 PM
Generational Trauma Impact on Indigenous Populations

Heather Tharp, LMSW
1.5 CEUs approved for all professions

02:30 PM - 04:00 PM
We Do Recover! The Science of Addiction Recovery

Dr. Dottie Saxon Greene, PhD, LCSW, LCAS, LADAC II, CAADC, CCS, QCS, RYT
Coordinator for Clinical Addiction Counseling Studies, Associate Professor
1.5 CEUs approved for all professions

March 19

09:00 AM - 10:30 AM
Wounding of the Soul: All of Us

Dr. Lanny Endicott, D.Min., MSSW, LCSW, LMFT
Professor Emeritus
1.5 Ethics CEUs approved for all professions

10:40 AM - 12:10 PM
Motivational Interviewing | Ethics Part One

Dr. Steven Wells, Ph.D., MSW
Clinical Assistant Professor
1.5 CEUs approved for all professions

12:50 PM - 02:20 PM
Motivational Interviewing | Ethics Part Two

Dr. Steven Wells, Ph.D., MSW
Clinical Assistant Professor
1.5 CEUs approved for all professions

02:30 PM - 04:00 PM
Understanding Suicide Through Social Work Values

Marcia Epstein, LMSW
CEO/Private
1.5 CEUs approved for all professions

The nationally recognized Laureate Eating Disorders Program in Tulsa, Oklahoma is designed to meet the needs of individuals with anorexia nervosa, bulimia and other eating-related difficulties.

- A small not-for-profit program that offers individualized treatment for women and girls
- Separate treatment programs for adults and adolescents
- Newly renovated treatment space with 15 all-private rooms
- Monthly family week provides support and education to loved ones
- Magnolia House, a transitional living home for adult women with eating disorders
—first month offered at no cost

 **Laureate**
Eating Disorders Program

800-322-5173

Conference Schedule

March 25

09:00 AM - 10:30 AM

NASW Advocacy | Ethics

Sarah Butts, MSW, LCSW
National Policy Director
Social Work Ethics 1.5 CEUs

10:40 AM - 12:10 PM

Social Work Advocacy & Ethics

Dallas Pettigrew, MSW
Director, Center for Tribal Studies
Anne & Henry School of Social Work
Social Work Ethics 1.5 CEUs

12:50 PM - 02:20 PM

**The Tension of Tokenism
Part 1**

Joshua Knowles
Tenesha Burnett
Mark Davis
Tahira M.
Kaitlynn Wilkinson
Dr. Stevie Johnson
1.5 General CEUs

02:30 PM - 04:00 PM

**The Tension of Tokenism
Part 2**

Joshua Knowles
Tenesha Burnett
Mark Davis
Tahira M.
Kaitlynn Wilkinson
Dr. Stevie Johnson
1.5 General CEUs



A break is scheduled between most sessions, be mindful of this when planning your days at the conference. Our goal is to bring you the CEUs you are needing, including the opportunity to receive up to CEUs in one conference, while also gaining knowledge over diverse subjects of your interests.

If you have any questions,
please do not hesitate to reach out to
CONFERENCE.NASWOK@SOCIALWORKERS.ORG



DO YOU OR A LOVED ONE HAVE AN ADDICTION?



What does your/their use look like?

How long have you/they been using?

When you/they don't use are withdrawal symptoms experienced?

Have you/they tried to cut back or quit but been unsuccessful?

[Learn More About Addiction](#)

QUESTIONS TO ASK ABOUT A POTENTIAL TREATMENT PROGRAM



What is the addiction treatment philosophy?

Does the program have therapists who have been trained and certified in different types of therapy?

Does the program offer different types of therapy?

Does the program offer family therapy?

[What To Look For In a Treatment Program](#)

WHY RIGHT NOW MATTERS



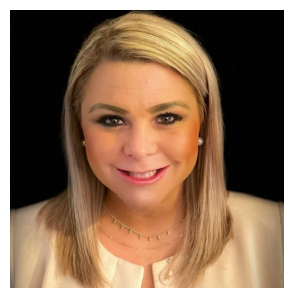
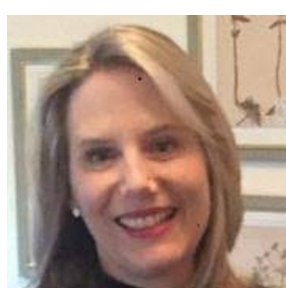
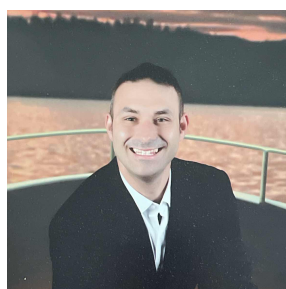
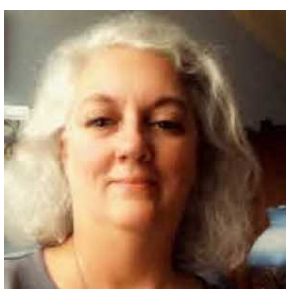
"The hardest thing on earth is to choose what matters." ~ Sue Monk Kidd

What matters? Health, wellness, safety, healing, hope, family, the present, the future...and absolutely **YOU!** Santé won't give up on you or your family...no matter the time of year, **TODAY** can be the first best day of the rest of your life! Access to a free therapist consultation awaits you; they'll join you on this first step towards healing.

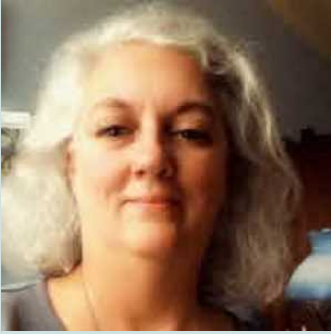
[Call Santé 24 hours/day at 866.238.3154](#)



THE TIME IS RIGHT FOR SOCIAL WORK



Speaker Bios



Dr. Deborah Johnson, MSW, LMSW
NASW-Oklahoma President

Deborah Johnson, Ph.D., MSW, LMSW is the President of NASW-Oklahoma. In addition, she serves at the President of the NASW National Council of Chapter Presidents, a member of the Oklahoma State Board of Licensed Social Workers, and a member of the Oklahoma State Maternal Mortality Review Committee. Deborah practices at Kaleidoscope Behavioral Solutions in McAlester, Oklahoma. Her clinical focus on children and adolescents. She is an MSW graduate of University of Oklahoma and graduated from Iowa State University with her Ph.D. in Psychology. She has held board positions on the Mental Health Association of Collier County, the American Association of University Women (AAUW) of Collier County, and several other boards in Florida and Oklahoma over her career. She has been a featured speaker at workshops, professional meetings and been featured on radio and TV programs.



Terrie Fritz, MSW, LCSW
Clinical Social Worker
University of Oklahoma

Terrie Fritz, LCSW, currently serves as Director of the Center for Social Work in Healthcare (CSWH) at the Anne and Henry Zarrow School of Social Work at the University of Oklahoma. She wrote and submitted the proposal to the University Hospital Trust to establish the CSWH, and received the first of six annual funding installments in spring of 2012. She is also a Clinical Instructor and teaches graduate courses related to healthcare as well as serving in the role of field liaison for students in health field units. The mission of the CSWH is to facilitate and support the use of the social work profession in healthcare services with an emphasis on the integration of social work into primary healthcare in Oklahoma. Ms. Fritz develops and oversees the CSWH efforts within the AHZSSW to increase student training and learning opportunities in the healthcare arena and provides technical assistance and support to key health care providers in Oklahoma regarding best practices for integrating social work behavioral care services into primary health care. She is currently a member for the professional work group which is rewriting and updating the NASW Standards for the Practice of Social Work in Healthcare Settings. She provides workshops for Social Workers on how to reduce malpractice risk as part of the NASW Assurance Services.



Crystal Rose-Bennett, LMSW
Clinical Social Worker
THRYVE, LLC

Crystal Rozelle – Bennett, LMSW has been working with youth and families for nearly 20 years. She is committed to empowering, engaging, educating and advocating in order to implement trauma-informed strategies for individuals and communities. Mrs. Bennett earned a Bachelor's in Arts in Psychology from Wells College and went on to complete her Masters in Social Work from Florida State University. During her career, Ms. Bennett has demonstrated a passion in sharing her personal and professional experiences with others to serve marginalized individuals and prevent re-traumatization. She has experience in directing child & youth service programs for the Department of the Navy with a history of providing program oversight and accountability in accordance with the Department of Defense, COA, & BGCA Requirements. Additionally, she has consulted with schools on policy development and has managed residential treatment facilities and foster care programs. Ms. Bennett is a life longer learner and has provided education and support to foster families, facilitated psychoeducation programs for youth, responded to crisis hotline calls for the Department of Veterans Affairs, and trained behavioral healthcare professionals in the areas of Human Trafficking, Suicide Prevention, Child Trauma/Maltreatment, Motivational Interviewing, Racial Trauma, Cultural Competency and serving LGBT youth.

Speaker Bios



Amber Jewell, LMSW
Social Worker
Finding Hope, LLC.

Amber Jewell, LMSW has been a social worker for over 15 years working with children, families, and individuals from all dynamics and life structures. She is a foster parent, adoptive parent, and advocate for child welfare services across the country. She is compassionate, authentic, and cares for the value of all people. Amber believes all people have the ability and right to live a life that helps them be the best versions of themselves. She excels at solution-focused services that build strengths for and within people.



Charles Cobble,
MSSW, BCD, LCSW
Clinical Social Worker
TVHS

Charles B. Cobble is a Licensed Clinical Social Worker (LCSW) and Board Certified Diplomate with 5 years of experience working with a diverse and complex population. Charles graduated from University of Tennessee Knoxville with a MSSW and a Certificate in Gerontology. Charles currently works as a Homeless Social Worker for the Department of Veterans Affairs and serves as a First Lieutenant with the Tennessee Army National Guard as a Behavioral Health Officer meeting the complex needs of over 1500 soldiers and recently returned from a deployment in Kuwait. Charles is also an adjunct faculty member at Tennessee Technological University where he teaches Social Work courses and provides consultation on the Social Work academic structure.



Cheryl Calhoun, LMSW LMAC
Social Work Instructor
K-State Polytechnic

Cheryl Calhoun is a licensed social worker and licensed addiction counselor with 13 years' experience in addiction counseling and case management. Calhoun serves as instructor in the social work program at Kansas State University Salina Aerospace and Technology Campus. She has been with the campus since 2016. She also serves as the Director of Development and as a substance use disorder counselor at Ashby House in Salina, KS.

Speaker Bios



Margaret Otto, LSCSW
Director and Co-Founder of the
KC Center of Family Systems
Kansas City Center of Family
Systems

Margaret Otto, LSCSW is the Director and Co-Founder of the KC Center of Family Systems since its inception in 1996. She has been learning and applying Bowen family systems theory for over twenty years, which includes studying under Murray Bowen, MD and Michael Kerr, MD through the programs offered at the Bowen Center for the Study of the Family. She earned a Masters in Social Work from Washington University in St. Louis and then obtained clinical licensure in Kansas and Missouri. She began her study of Bowen family systems theory at the Menninger office in Kansas City. She has a full time private clinical practice as a family therapist in addition to carrying local and national responsibility for leadership of the KC Center in representing Bowen family systems theory.



Dr. Tami Radohl, Ph.D., LSCSW
Chair, Social Work, Associate
Professor
Park University Social Work

Tami is an Associate Professor and Department Chair at Park University. She is also a Licensed Specialist Clinical Social Worker #2347 in the State of Kansas. Research interests and publications include child and family mental health, personal medicine and shared decision making in mental health recovery, MSW field education, social work advocacy, and homelessness in transition-aged youth. In addition to her career in social work, academics, and mental health, Tami is also a past-President for The Junior League of Wyandotte and Johnson Counties, a non-profit that promotes volunteerism and leadership among women while supporting interests that benefit women and children in the Kansas City area and is a past board member for the Kansas Chapter of the National Association for Social Workers. She is also on the Council for Field Education, a council of the Counsel of Social Work Education, social work's accrediting body in higher education.



Tina Lai, LMSW
Social Worker

Tina Lai is a Licensed Master Social Worker who earned her MSW from the University of Kansas in 2020. Her professional interest is in older adult care and finding ways to reduce loneliness and isolation in aging populations. She has lived in Taiwan, Mississippi, Illinois, California, Massachusetts, Alaska, and Kansas and is eager to contribute to positive social change wherever she resides. She enjoys volunteering in the local community, making quilts for others, and taking the time to wonder.

Speaker Bios



Wendy Funk-Schrag, MSW,
LCSW
Vice President State
Government Affairs
Frenius Health Care

Wendy Funk Schrag received her Bachelors of Social Work from Bethel College and her masters of social work from the University of Kansas School of Social Welfare. She has spent the past 32 years working in the dialysis industry as a dialysis social worker and currently is the Vice President of State Government Affairs. She is a former President of the NASW Kansas Chapter Board of Directors. She lives in Newton, KS.



Dr. Dottie Saxon Greene, PhD,
LCSW, LCAS, LADAC II,
Clinical Addiction Counseling
Studies, Associate Professor
East Tennessee State
University

Dr. Greene's practice experience has been in the areas of addiction, mental health, trauma, eating disorders, criminal justice, adolescent, and clinical supervision settings. Inspired by over 20 years of practice experience, Dr. Greene's scholarship interests include recovering addiction professionals and relapse, practitioner well-being, and social work student self-care. Dr. Greene's professional experience also includes 15 years of teaching in higher education, two terms on the North Carolina Addiction Specialist Practice Board, and seven years of service to the National Association of Social Workers Alcohol Tobacco and Other Drugs Speciality Practice Section. She currently serves on the National Board of Directors of the National Association of Social Workers.



Phelica Glass, LSCSW, GCCAC,
FAAGC, CSOTP
Social Worker

Phelica Glass is a Licensed Specialist Clinical Social Worker with a successful psychotherapy practice in Topeka, KS. Graduate of Washburn University with a bachelor's in Behavioral Sciences. Graduate of Tulane University of New Orleans with a Masters in Clinical Social Work and certification of Gerontology. Through further education Phelica has attained certification in Child And Adolescent Grief Counseling, Sex Offender Treatment , Ecotherapy and Anger Management.

Speaker Bios



Kaitlynn Wilkinson, MSW

Project Evaluator for NorthCare
NorthCare, INC.

Kaitlynn Wilkinson, MSW is the Project Evaluator for NorthCare. She has been with NorthCare for over five years, having served as the agency's Communications Specialist for three years, and before that as an MSW practicum student. Kaitlynn also serves as the chair of the Diversity & Inclusion workgroup, is a member of the Trauma-informed Care & Wellness workgroup after serving as chair for two years, and is the founder and chair of the Antiracism workgroup. She is a native Oklahoman, and a double-alumna from the University of Oklahoma (BA 2014, MSW 2017). She is also an adjunct professor teaching Social Work Research in the online MSW program at OU. Kaitlynn has a background in psychology research, social work research, and policy analysis, and has presented her research at state and national conferences. She also has experience in community outreach and organizing, public speaking, and fundraising.



Dr. Lanny Endicott, D.Min.,
MSSW, LCSW, LMFT
Professor Emeritus
Oral Roberts University

With a lengthy and distinguished career in higher education, Dr. Lanny Endicott has dedicated his professional life to social work. He was the Director of the Social Work Program at Oral Roberts University (ORU) for over 47 years. Dr. Endicott continues to be involved in social work education both at ORU and abroad (Russia). His interests besides education include: community planning and development, social services (particularly South Peoria in Tulsa, Oklahoma), workshops in compassion fatigue and burnout, community services for military veterans including soul repair, child welfare (both in Oklahoma and Russia), and family. Lanny has earned a Doctorate of Ministry from the Midwestern Baptist Theological Seminary and a Master of Social Work from the University of Missouri, Columbia. He is affiliated with NASW, NACSW; the Community Service Council of Greater Tulsa; the South Peoria Neighborhood Connection Foundation Inc; the South Tulsa Community House and social work in Russia. Recognized by those in the field for his work, Dr. Endicott was awarded Social Worker of the Year in Oklahoma by NASW-OK in 2003. As well as being a Licensed Clinical Social Worker he is a Licensed Marriage and Family Therapist where he lives in Tulsa, Oklahoma. In conjunction with his professional interests, Dr. Endicott is a keen runner, having been Head of Cross Country and Track Coach at ORU. Ever a leader, he launched the cross country program at ORU in 1976. Their best season was in 1984 when ORU finished 11th in the NCAA National Cross Country Championships.



Heather Tharp, LCSW
Clinical Social Worker
Cherokee Health Services

Heather holds a Bachelor of Psychology from Northeastern State University and Master of Social Work from the University of Oklahoma. She has been working for Cherokee Nation HERO Project since 2013. She currently works at the micro level as a Behavioral Health Clinician under supervision for clinical licensure with children ages 0-17, youth ages 18-23, and families. She previously worked as a Family Care Manager, collaborating with families to set goals and objectives to improve child wellness outcomes, acting as a client advocate and providing parenting classes to the community. Heather has worked at the mezzo level partnering with schools to provide various social/emotional trainings including; Caring for Children Who Have Experienced Trauma, Brain Architecture, Toxic Stress, Social/Emotional Skill Building, Self-Care, and Suicide Prevention programs to address high adverse childhood experiences and intergenerational trauma in the student population. Heather has assisted in program development through research and implementation of grant goals and objectives for LAUNCH and Systems of Care, as well as implementing Garrett Lee Smith Suicide Prevention Grant as Project Director.

Speaker Bios



Dr. Steven Wells, Ph.D., MSW
Clinical Assistant Professor
University of Oklahoma

Steven P. Wells is a Clinical Associate Professor at the University of Oklahoma Anne and Henry Zarrow School of Social Work, and serves as Simulation Program Coordinator. He has worked in the field of family and children services since 1976 as a child welfare worker, family mediator, foster parent trainer, group counselor, and university professor. He is a Licensed Clinical Social Worker in Oklahoma (U.S.A.) and earned a doctorate in early childhood education in 2006. He teaches courses in social work practice, interviewing skills, and human behavior. He received a "Champions of Children Award" in 2008 from The Foster Care Association of Oklahoma, Inc., and was named Undergraduate Adviser of the Year in 2012 by the O.U. College of Arts and Sciences. His interests include children with disabilities and their families, child welfare services, counseling with abusive parents, foster parent training, and family mediation. He has explored Motivational Interviewing for the last ten years as a vital model for social work practice. Most of his MI training is within the context of child welfare services and allied health. He became associated with the Motivational Interviewing Network of Trainers (MINT) in 2017. Dr. Wells is married to a social worker and is the parent of four adult children.



Marcia Epstein, LMSW
Lawrence, Kansas, USA
CEO/Private

Ms. Epstein brings decades of experience in the national suicide prevention community. She is also a social worker who lives with suicide grief. Her areas of special expertise include reducing suicide risk, support for grief after suicide or death from other causes, and support for trans and nonbinary youth and adults. Ms. Epstein served as a volunteer counselor, then as Director for 34 years, of Headquarters Counseling Center, now known as KSPHQ, which serves Kansas on the National Suicide Prevention Lifeline. Since December 2013, her social work includes work with individual youth and adults, plus support groups, retreats, workshops, and special events for people affected by suicide. Her groups include Healing After Suicide, for suicide grief; Stayin' Alive, for living with suicide thoughts, self-harm, and attempts; and Thriving Family-Friends, for supporting suicidal loved ones. She also provides consultation and training. Ms. Epstein is Co-Chair of the national Clinician Survivor (of Suicide Loss) Task Force, a member of the Steering Committee of NAMI Douglas County, KS, and a member of the Thriving: Grief Support Team of The Light Center in Douglas County, KS. She is also the host of events at "The Intersection of Art and Mental Health." Ms. Epstein, her husband, and their Rainn Beau pup live in an 1880's home in Lawrence, KS. More about Ms. Epstein: <https://MarciaEpstein.biz>



Sarah Butts, MSW, LCSW
National Policy Director
NASW

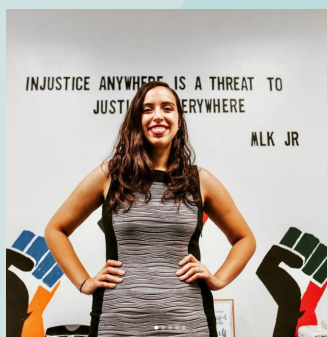
Sarah Christa Butts, MSW, is the National Policy Director for NASW. Prior to her role at NASW, she was the Executive Director of the Grand Challenges for Social Work and Senior Administrator within the Dean's office at University of Maryland, School of Social Work. Ms. Butts is the founding administrator of the American Academy of Social Work and Social Welfare (AASWSW) and played a significant role in the organization's development as a 501c3 and launching of Grand Challenges from 2013-2017. She is a co-author on the AASWSW working paper to End Homelessness and contributing author on a new book, Grand Challenges for Social Work and Society, published by Oxford University Press. Prior experience include roles at the Family League of Baltimore, Maryland Department of Human Services, Social Services Administration and Baltimore County Department of Social Services. Ms. Butts holds an MSW from University of Maryland Baltimore and a BSW from University of Maryland Baltimore County, where she is currently pursuing a PhD in Public Policy.

Speaker Bios



Dallas Pettigrew, MSW
Director, Center for Tribal
Studies
University of Oklahoma

Dallas Pettigrew is a citizen of the Cherokee Nation and grew up in Adair County, OK. He joined the faculty in January 2017. Before that he worked for the Cherokee Nation, with experience in Child Welfare, Human Service Administration, Higher Education/College Resources, and Behavioral Health. He also was the first Program Manager of the Family Safety Program of the Eastern Band of Cherokee Indians in Cherokee, NC. He is a Global Leader for Young Children, part of the World Forum Foundation, and serves on its Indigenous Peoples' Action Group. Mr. Pettigrew is a Co-Investigator and Director of Community Environmental Change in "A Prevention Trial in Cherokee Nation," a five-year long study funded by the National Institutes of Health, testing interventions that prevent underage alcohol use. He is also the founding director of the Center for Tribal Social Work in the Anne and Henry Zarrow School of Social Work. He and his collaborators have been awarded approximately \$1,600,000 in grants and contracts to support the education, training, and workforce development of tribal child welfare professionals, including \$650,000 to provide stipends for tuition and other expenses for social work students who commit to working in tribal child welfare upon graduation. Mr. Pettigrew teaches graduate and undergraduate courses in macro social work including Human Diversity and Societal Oppression and Social Welfare Policy. He is the facilitator of the OU-Tulsa Police Advisory Council and formerly served as the 2nd Vice President (Treasurer) of the Oklahoma Chapter of the National Association of Social Workers, of which he has been a member since 2010. In his free time, Mr. Pettigrew enjoys woodworking, kayaking, hiking, and road trips. He is the father of one son, and uncle of several nieces and nephews.



Tahira M.
Director of Operations at
Urban Strategies

Raised in Tulsa, Tahira works as Director of Operations at Urban Strategies Inc. in Tulsa. Urban Strategies is a national nonprofit, based out of St. Louis, that focuses on human capital development and community redevelopment, specifically in severely distressed, low socioeconomic neighborhoods. The Eugene Fields community in West Tulsa was awarded \$30 million by the US Office of Housing and Urban Development for redevelopment in 2018. With additional funding from other partners, this will be a 6-year project totaling over \$200 million in development. Prior to her role at Urban Strategies, Tahira worked at a strategic communications and management consulting firm, where she helped start conversations with leaders across the state about the importance of diversity, equity and inclusion. Tahira graduated with her MBA and an HR certification from Oklahoma State University. She is also certified in diversity and inclusion by Cornell University and certified in unconscious bias and cultural IQ by the global Cultural Intelligence Center.



Tenesha Burnett
NASW-OK Board of Directors
NASW-Oklahoma

Tenesha earned my bachelors degree in Social Work at oral Roberts university in 2021. She has been apart of multiple internship programs such as Youth at Heart Inc, Legal Aid, and Family Center for Juvenile Justice. Post graduation, Tenesha plans to work more with at-risk youth and work directly with the homes less community. One of my dreams is to build a homeless home that would help individuals spiritually, but also help them thrive within their community. Tenesha is looking forward to continuing her education and pursuing a career in Professional Marriage and Family Counseling.

Speaker Bios



Dr. Jody Brook, MSW, Ph.D.,
LCSW
Associate Professor, University
of Kansas
University of Kansas

Dr. Jody Brook received her Ph.D., with honors, from the University of Kansas, School of Social Welfare in 2005, where she is currently an Associate Professor. She has served as the Program Evaluator for 16 externally funded research projects across 3 US States which center on designing, implementing, monitoring, refining, and evaluating the ongoing implementation of services and program practices into the public child welfare, behavioral health, and court related service delivery systems that serve vulnerable child welfare involved families. Dr. Brook's scholarship focuses on the impact of parental substance abuse and child maltreatment, and the design and delivery of public services to impact this issue. She earned her Master of Social Work at Tulane University in 1988 and has maintained a license to practice at the clinical level since 1991.



Rhonda Weimer, LSCSW,
LCSW
MSW Program Director,
Department of Social Work
Fort Hays State University

Rhonda Weimer received her MSW from the University of Kansas in 1993 with a concentration in Clinical Social Work. From 1993 through 2004 Rhonda worked as a Clinical Social Worker; first at Northeast Kansas Mental Health and Guidance Center (now known as the Guidance Center), and then through her private practice. She also remains active working part time as a Military Family Life Counselor with active duty and National Guard troops to address pre and post deployment difficulties. From August 2013 to July 2015 Rhonda served as Assistant professor in the Department of Social Work at Park University. She left to work more closely with Veterans at the VA Medical Center as a case manager in the Homeless Program in Kansas City Mo, but has now returned to her love of teaching by joining the FHSU faculty.



Dr. Stevie Johnson
CEO, The Space Program

Stevie "Dr. View" Johnson is a DJ, producer, educator and community organizer from Longview, TX. With close to ten years of college student development experience, Dr. View received his PhD in Higher Education Administration from the University of Oklahoma, in May of 2019. His written Hip-Hop & album dissertation, entitled Curriculum of the Mind: A BlackCrit, Narrative Inquiry Hip-Hop Album on Anti-Blackness & Freedom for Black Male Collegians at historically white institutions, received the 2019 Bobby Wright Dissertation of the Year Award for the Association for the Study of Higher Education. Dr. View is the CEO of The Space Program (TSP), an independent record label hub and Hip-Hop collective; CEO of (IN)VISIBLE records; Executive Producer of Fire in Little Africa, which is a multimedia Hip-Hop Project commemorating Tulsa's Historic Greenwood District known as Black Wall Street, and the Manager of Education & Diversity Outreach for the Woody Guthrie Center & Bob Dylan Center. Dr. View is married to his wife Ariel, and is a father to his three year old son, Amir Sky.

Speaker Bios



Dr. Victor Manalo, MSW
President of NASW-California
Chapter; Retired university
professor

Dr. Victor Manalo is the President of the NASW-CA Chapter Board of Directors, retired university professor, former city councilman and Mayor, and local government consultant. He earned a Ph.D. in Social Work from the University of Southern California and a Master's Degree in Social Work from California State University, Long Beach. For over eleven years, he served on the Artesia City Council in Southeast Los Angeles County and was active as President of the California Contract Cities Association, Regional Council Member of the Southern California Association of Governments, and Policy Board Member of the Southeast Los Angeles County Workforce Investment Board. He continues to serve as a Planning Commissioner for the city. Victor has continued to lecture at California State University, Los Angeles in the School of Social Work, teaching graduate and undergraduate policy, policy practice, and community organizing. As a consultant, he is working with Los Angeles County to facilitate public-private coalitions to create healthy communities and is engaging local governments to address pedestrian safety.



Victoria Stob, MSW, LCSW
Assistant Clinical Professor of
Social Work in the
Child Study Center
Yale School of Medicine

Victoria Stob is a licensed clinical social worker and Assistant Clinical Professor of Social Work at the Yale Child Study Center. Victoria has been in the mental health field for over a decade and has extensive clinical, supervisory, and teaching experience, currently leading state-wide advanced clinical training for the IICAPS (Intensive In-Home Child and Adolescent Psychiatric Services) Network. Victoria's research interests include the intergenerational transmission of trauma and the developmental of parental reflective functioning.



Mark Davis, LCSW
Chief Programs Officer
Mental Health Association

Mark A. Davis, LCSW Chief Programs Officer Mental Health Association Oklahoma Mark Davis began his social work career in 1996 working as a Rehabilitative Specialist at an area Psychiatric Community Mental Health Center, where he provided supportive counseling and group rehab to individuals entering an In-patient setting. After receiving his Master's degree in social work from the University of Oklahoma in 2005, he continued his unyielding promotion of hope and recovery for people impacted by mental illness, homelessness, trauma, debilitating poverty, and those facing challenges as a result of involvement with the criminal justice system. Ultimately, his drive to assist at-risk populations along with a more global goal of improving the social service system(s) across the community led to his current position as Chief Programs Officer for the Mental Health Association Oklahoma. Mr. Davis remains committed to implementing a wide range of mental health service modalities and evidenced based practice models. In addition, Mr. Davis also remains active in a variety of professional activities; including various community task force, partnering agency Boards, and Advisory Council seats..

Speaker Bios



Ashley Lincoln, MSW
Child Wellness Coordinator at
Cherokee Nation The HERO
Project
Cherokee Health Services

Ms. Lincoln is the Child Wellness Coordinator at Cherokee Nation The HERO Project. She studied her Master's Degree in Social Work (MSW) at The University of Oklahoma and her Bachelor Degree of Social Work at Northeastern State University.

**BY 2025 THERE WILL BE A
SHORTFALL OF OVER
10,000 SOCIAL WORKERS.
OKLAHOMA
NEEDS MORE
SOCIAL WORKERS.**



THE TIME IS RIGHT
FOR SOCIAL WORK



SOCIALWORK.OU.EDU



The nationally recognized Laureate Eating Disorders Program in Tulsa, Oklahoma is designed to meet the needs of individuals with anorexia nervosa, bulimia and other eating-related difficulties.

- A small not-for-profit program that offers individualized treatment for women and girls
- Separate treatment programs for adults and adolescents
- Newly renovated treatment space with 15 all-private rooms
- Monthly family week provides support and education to loved ones
- Magnolia House, a transitional living home for adult women with eating disorders –first month offered at no cost
- Closely affiliated with Laureate Institute for Brain Research to investigate the biology behind eating-related illnesses

 **Laureate**
Eating Disorders Program

800-322-5173
laureate.com/eatingdisorders

Earn your certificate 100% online.

Advance your education with certificates in specialized areas that are tailored to help you meet your professional goals.

- › Gerontology
- › Women's Health
- › Public Health
- › Human Services

Learn more at
ClarksonCollege.edu/Community-Health



SHAPING
HEALTH
CARE

 **Clarkson College**
Prepare to be the best.

Upcoming Events

Social Work
Licensure
Prep Course

Friday, May 20 2022

Faith & Social
Work
Conference

Friday and Saturday,
November 4-5 2022

Latest news and events for
Oklahoma Social Workers
at
www.naswok.com



N A S W

National Association of Social Workers
OKLAHOMA CHAPTER

Special Thanks

2022 Heartland Virtual Conference .
We hope you will join us again next year!

All Attendees are encouraged to visit the sponsors websites for more information on services and products to assist social workers.

