

# Advance Your Career and Your Education with Clarkson College

Sarah Flanagan, MSW, MPA, LCSW



@ClarksonCollege



/ClarksonCollege



@clarkson\_college



Clarkson College





# Sarah Flanagan, MSW, MPA, LCSW

Director of Community Health and Interprofessional Education  
Associate Professor  
Clarkson College  
Omaha, NE

[flanagansarah@clarksoncollege.edu](mailto:flanagansarah@clarksoncollege.edu)



# My Journey

Leads Me To Provide an Individualized, Flexible Path For Others



# My Journey



Relationships matter:  
We can all help others create their future

Leads Me To Provide an Individualized,  
Flexible Path For Others

The value of creating a personalized student experience

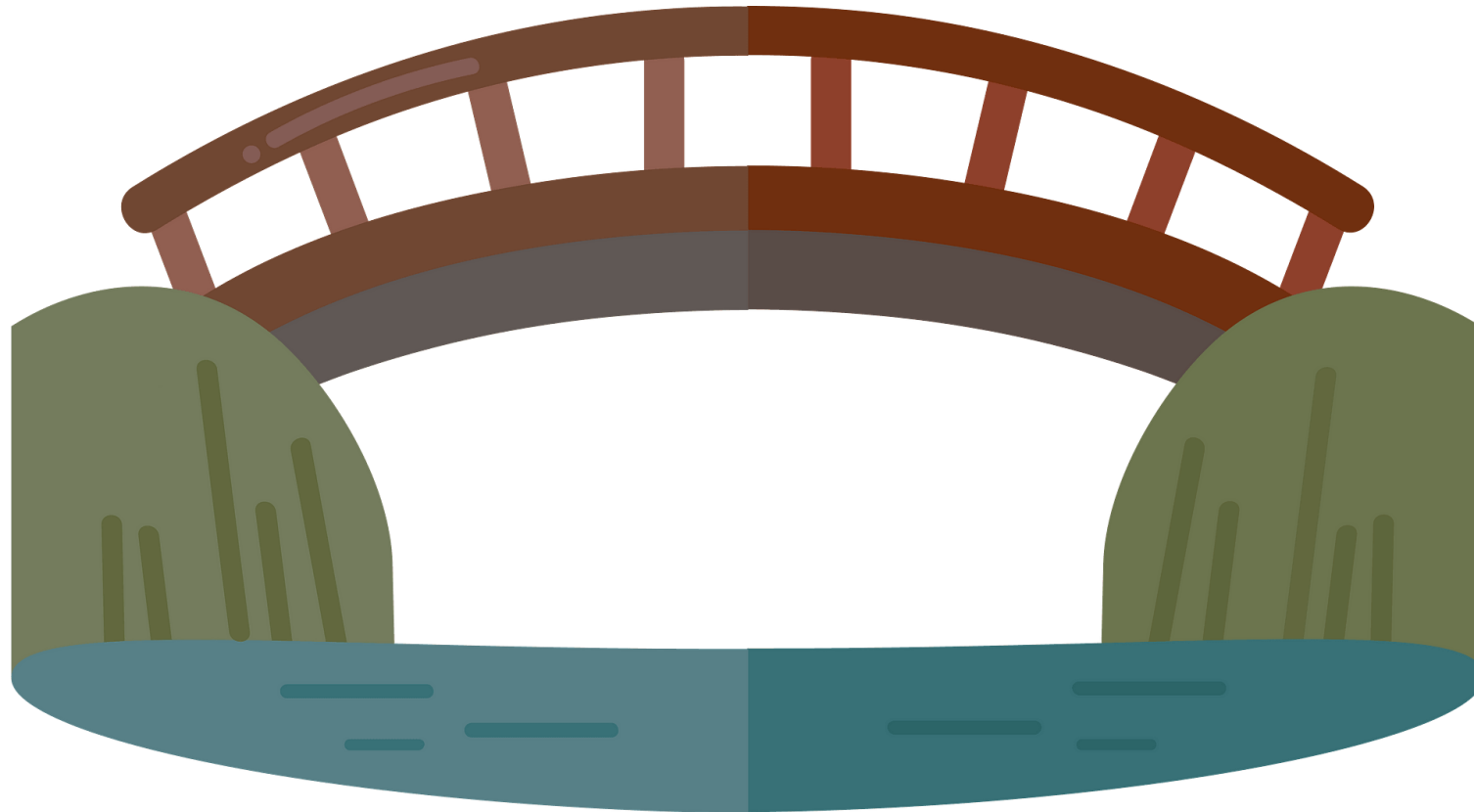
If you dream it, you can help create it, but people need:

- Support, resources, opportunities

————— *The* —————  
**BEST WAY**  
..... TO .....  
**PREDICT  
THE FUTURE**  
IS TO  
**CREATE IT**  
— Abraham Lincoln —

# The Clarkson College Community Health Program Wants To Help Be That Bridge

What you've  
learned and  
experienced



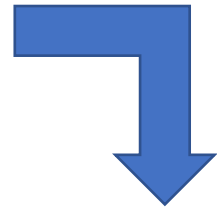
How you want  
to continue to  
learn and grow

# We want to help communities retain and promote their people

Earn a top-notch degree or certificate

100% online

From home



- **Help your community**
- **Advance your career**
- **Continue making a difference**





# Community Health

---

## **Supplement Your Social Work Education and Experience**

Earn a Certificate to enhance your knowledge and skills in:

- **Gerontology**
- **Women's Health**
- **Public Health**
- **Human Services**

## **Clarkson College Advantage Program**

- Supportive, individualized advising
- Online platform to connect with other students, faculty, and community professionals
- Resources, guest speakers, site visits, job shadowing, interviews, and more

# Degree Options & Deadlines

---

## Certificate Options

- Courses available 100% online
- Full- and part-time options
- Finish as fast as one year!

Apply in 2022 and we will  
waive your application fee  
and enrollment deposit!  
(\$185 value)

## Start Date & Deadlines

- Fall, Spring and Summer semester starts
- Application deadline: rolling

## Bachelor Degree Options also available

- Bachelor of Science in Community Health
  - Community-Based track
  - Pre-Health Professional track  
(Medical, Dental, Occupational Therapy,  
Physical Therapy, Physician Assistant, Pharmacy)



What do our students  
have to say?!



# Jennifer Sorensen-Nelson

---

## **What you most value or appreciate about our program**

Joining this program is one of the best choices I have ever made. The instructors are so experienced, talented, and compassionate. My classmates come from a variety of walks of life, which is exciting and provides for rich discussions.

## **How you see this helping you in your career**

I am a single parent with a full-time job, and I was looking for a more active way to grow and contribute to the community. Currently I am getting a Bachelor's in Community Health with a focus on Gerontology while also working toward Public Health and Human Services certificates.

## **Why you'd recommend it to others**

The most appealing part of this program is that it is available online and it is easy to participate while still working full-time, running a household, and raising a family. Oftentimes classes feel like a place to belong rather than work and the instructors are a major asset. They are such a great group of people to go through this transformation with.

# Susan Riggs

---



I most appreciate the people that I have encountered. They are all cheerleaders for me! When I first started, I was in my mid 50's and had not done college work for 30 years. I didn't think I could do it.

Sarah encouraged me and gave me great direction and advice. I discovered wonderful professors who challenged me to dig deeper, look harder, and think critically on how that topic would impact the people I work with and the population I live in. Because this degree program had the capability of being exclusively online, I have met classmates from other parts of the country. The chance to learn from and work with others outside my community and my state has been a great learning opportunity.

I have gained confidence, strength and courage. This program has opened doors for me in the job market I had never dreamed of 5 years ago. I now have a job as a Parent Resource Coordinator at the Munroe Meyer Institute. I help people to connect to the resources they are looking for and they need. My biggest accomplishment is that I listen to the stories, I hear what the parents are saying when they think there is no one who is still listening to them.

This program is designed to challenge us to do more, be more, and to become the change in the world. We are taught to be culturally, religiously, and gender aware. We learn to be part of a collaborative team.

No one is too old to go back to school and reshape what their future looks like. You can take classes while working, even full time, and with a family. It takes more juggling and determination, but the rewards are sweeter because you have chosen to make yourself a priority and to improve your career goals.



# Aubrie Lindner

## **What you most value or appreciate about our program**

What I find to be most valuable in the Clarkson College Community Health Program is the real-world approach to learning by instructors with learned experience who inspire growth.

## **How you see this helping you in your career**

This growth has empowered me in my career to take on a role that serves a greater number of individuals and works towards a vision promoting a lasting positive impact within the community.

## **Why you'd recommend it to others**

I would recommend the Community Health Program to others who desire to find their own passion and purpose within promoting their community's well-being.

# Elisha Muhleka

---

I love that the Community Health program is 100% online.

As a working mom, I need the flexibility that an online classroom provides, but also the connections that are formed through virtual learning.

The instructors at Clarkson go out of their way to ensure there are open lines of communication and collaboration among classmates.

This program has taught me how to find meaningful answers to my questions about community healthcare - and showed me where I can use my talents to make a positive impact.





# Questions?

Clarkson College Enrollment & Advising Office  
PH 402 552 3100 TF 800 647 5500  
[admissions@clarksoncollege.edu](mailto:admissions@clarksoncollege.edu)

[www.clarksoncollege.edu/community-health/index](http://www.clarksoncollege.edu/community-health/index)

