



REAL ESTATE SERVICES

For Lease

Retail - East Village
3,055 +/- SF

428 9 Avenue SE

Calgary, AB



Suite 250, 4723 1st Street SW, Calgary, AB  kdicommercial.com

Daniel Goldstrom, Partner
403.809.8326
dgoldstrom@kdicommercial.com

Steve Seiler, Senior Associate
403.818.9837
sseiler@kdicommercial.com

For Lease

428 9 Avenue SE
Calgary, AB

Photos



Space Details

Gross Lease Rate: Below Market

Building Size: 3,055 +/- SF

Zoning: CC-ET
(Centre City East Village)

Lease Term: 3-10 yr

Occupancy: Immediate

Property Highlights

Permitted Pharmacy Location

Loading Dock Capability

Close to City Hall LRT Station, across the street from City Hall and New Central Library

Covered, Secure Reserved Parking Available for \$350/month per stall

Suite 250, 4723 1st Street SW, Calgary, AB  kdicommercial.com

KDI
COMMERCIAL
REAL ESTATE SERVICES
kdicommercial.com

Daniel Goldstrom, Partner
403.809.8326
dgoldstrom@kdicommercial.com

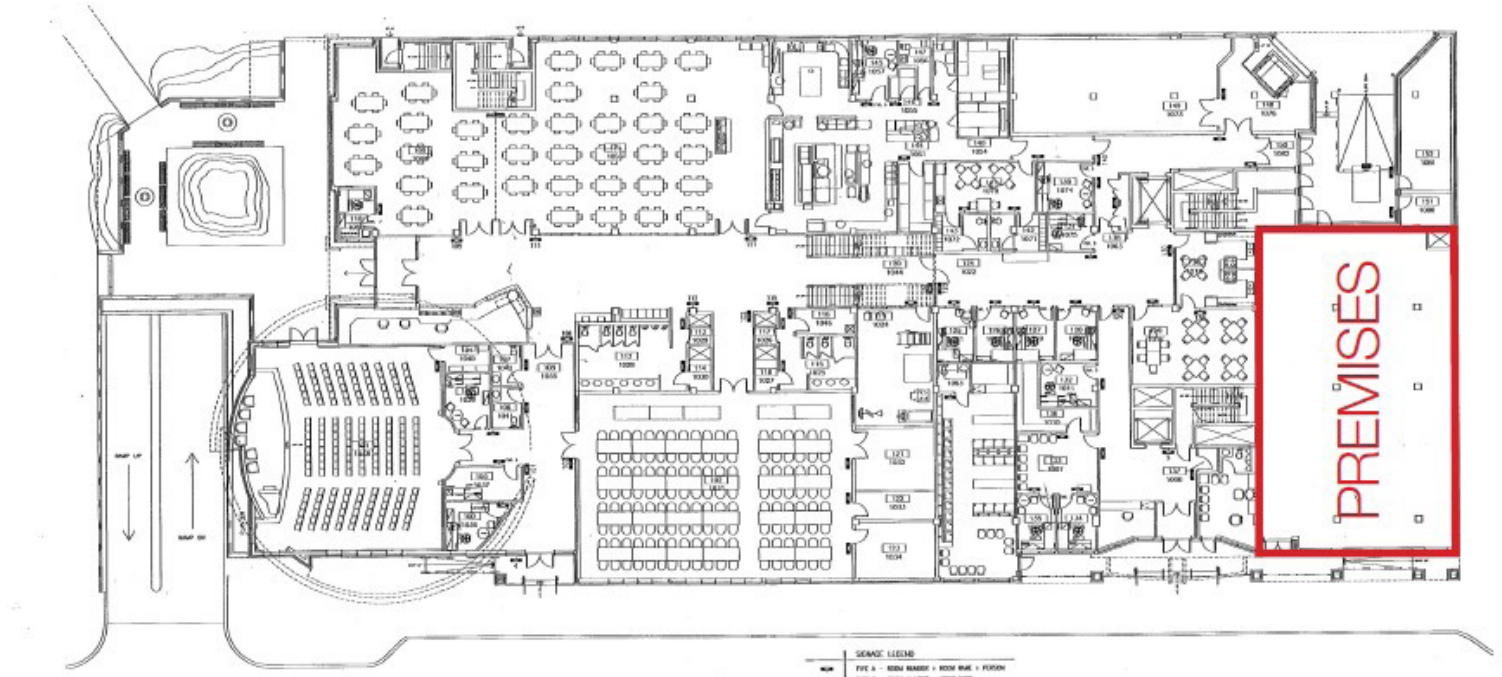
Steve Seiler, Senior Associate
403.818.9837
sseiler@kdicommercial.com

This brochure is intended for information purposes only and should not be relied upon for accurate factual information by the recipients hereof. The information contained herein is based on information which KDI Commercial Inc. deems reliable. However KDI Commercial Inc. assumes no responsibility for the degree of accuracy of such information, nor does KDI Commercial Inc. represent or warrant the information contained herein. Recipients hereof should conduct their own investigation to determine the accuracy of information contained herein. The information contained herein is subject to change without notice. All rights reserved. No reproduction, distribution, or transmission of the copyright materials at this site is permitted without the written permission of KDI Commercial Inc. unless otherwise specified.

For Lease

428 9 Avenue SE
Calgary, AB

Floor Plan



Photos



Suite 250, 4723 1st Street SW, Calgary, AB  kdicommercial.com

KDI
COMMERCIAL
REAL ESTATE SERVICES
kdicommercial.com

Daniel Goldstrom, Partner
403.809.8326
dgoldstrom@kdicommercial.com

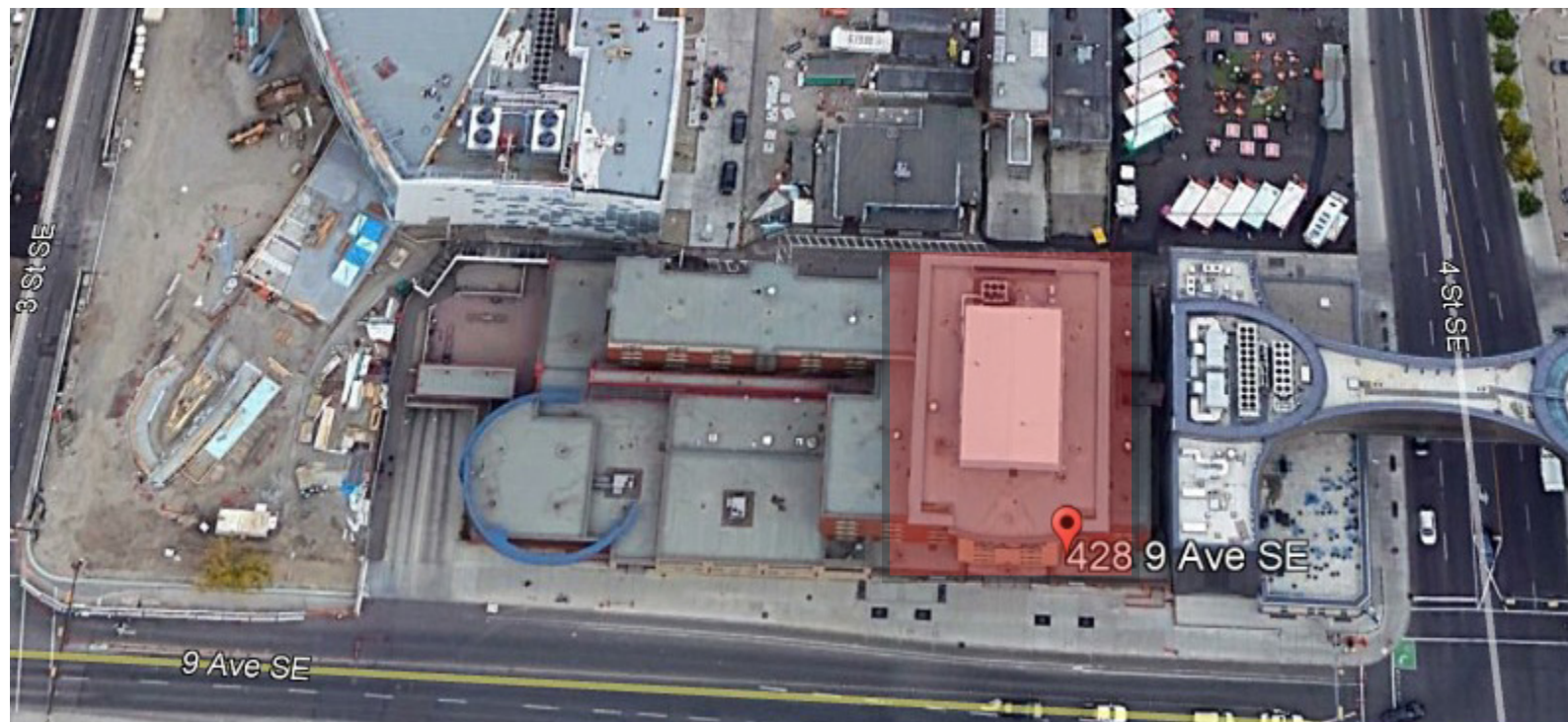
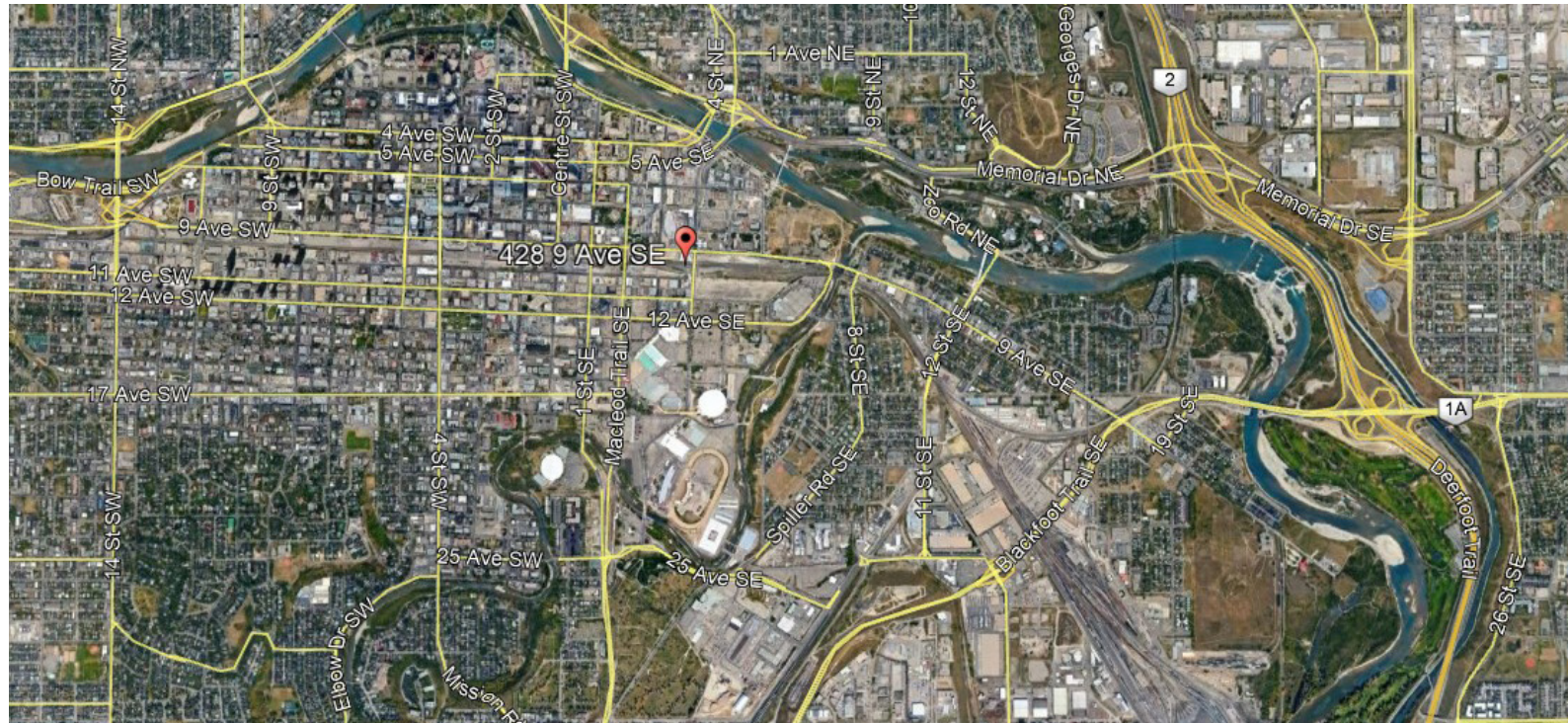
Steve Seiler, Senior Associate
403.818.9837
sseiler@kdicommercial.com

This brochure is intended for information purposes only and should not be relied upon for accurate factual information by the recipients hereof. The information contained herein is based on information which KDI Commercial Inc. deems reliable. However KDI Commercial Inc. assumes no responsibility for the degree of accuracy of such information, nor does KDI Commercial Inc. represent or warrant the information contained herein. Recipients hereof should conduct their own investigation to determine the accuracy of information contained herein. The information contained herein is subject to change without notice. All rights reserved. No reproduction, distribution, or transmission of the copyright materials at this site is permitted without the written permission of KDI Commercial Inc. unless otherwise specified.

For Lease

428 9 Avenue SE
Calgary, AB

Location



Suite 250, 4723 1st Street SW, Calgary, AB  kdicommercial.com

KDI
COMMERCIAL
REAL ESTATE SERVICES
kdicommercial.com

Daniel Goldstrom, Partner
403.809.8326
dgoldstrom@kdicommercial.com

Steve Seiler, Senior Associate
403.818.9837
ssailer@kdicommercial.com

This brochure is intended for information purposes only and should not be relied upon for accurate factual information by the recipients hereof. The information contained herein is based on information which KDI Commercial Inc. deems reliable. However KDI Commercial Inc. assumes no responsibility for the degree of accuracy of such information, nor does KDI Commercial Inc. represent or warrant the information contained herein. Recipients hereof should conduct their own investigation to determine the accuracy of information contained herein. The information contained herein is subject to change without notice. All rights reserved. No reproduction, distribution, or transmission of the copyright materials at this site is permitted without the written permission of KDI Commercial Inc. unless otherwise specified.