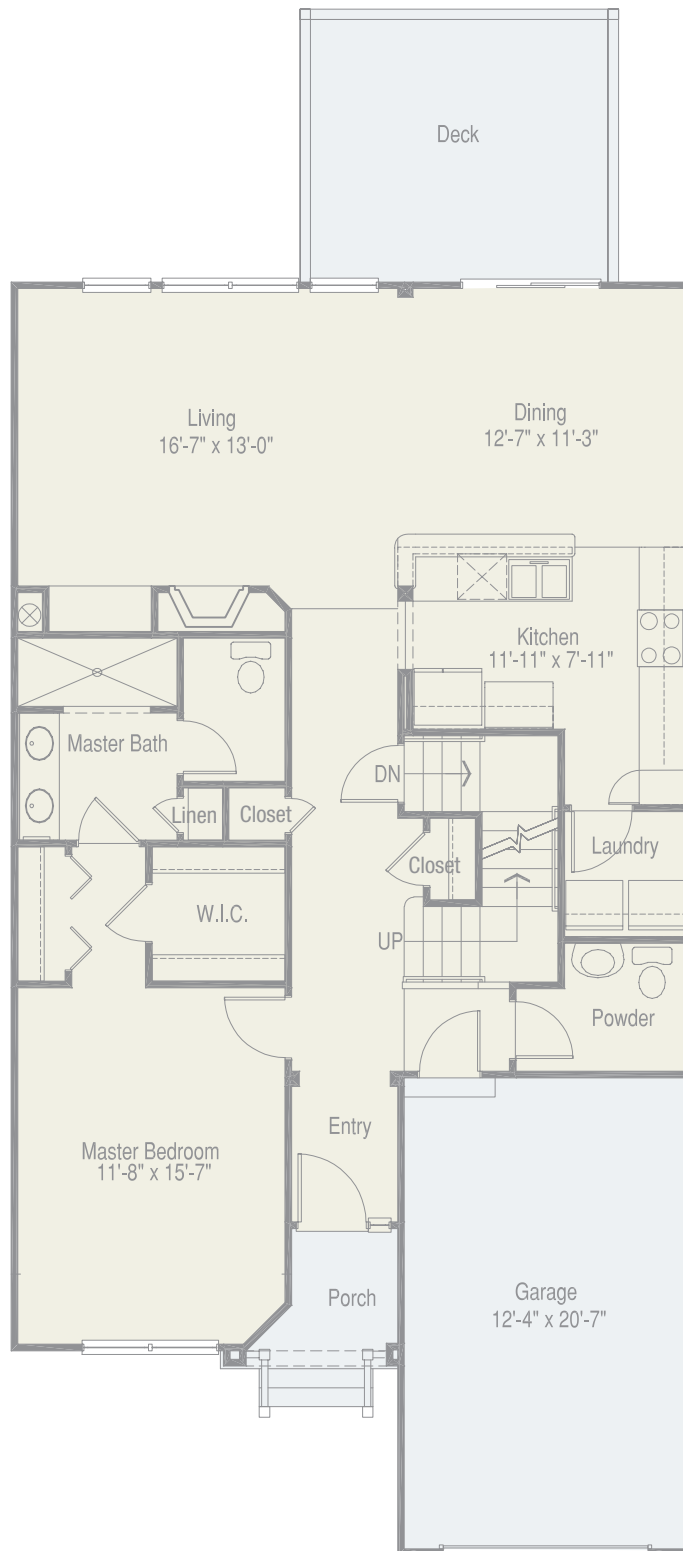


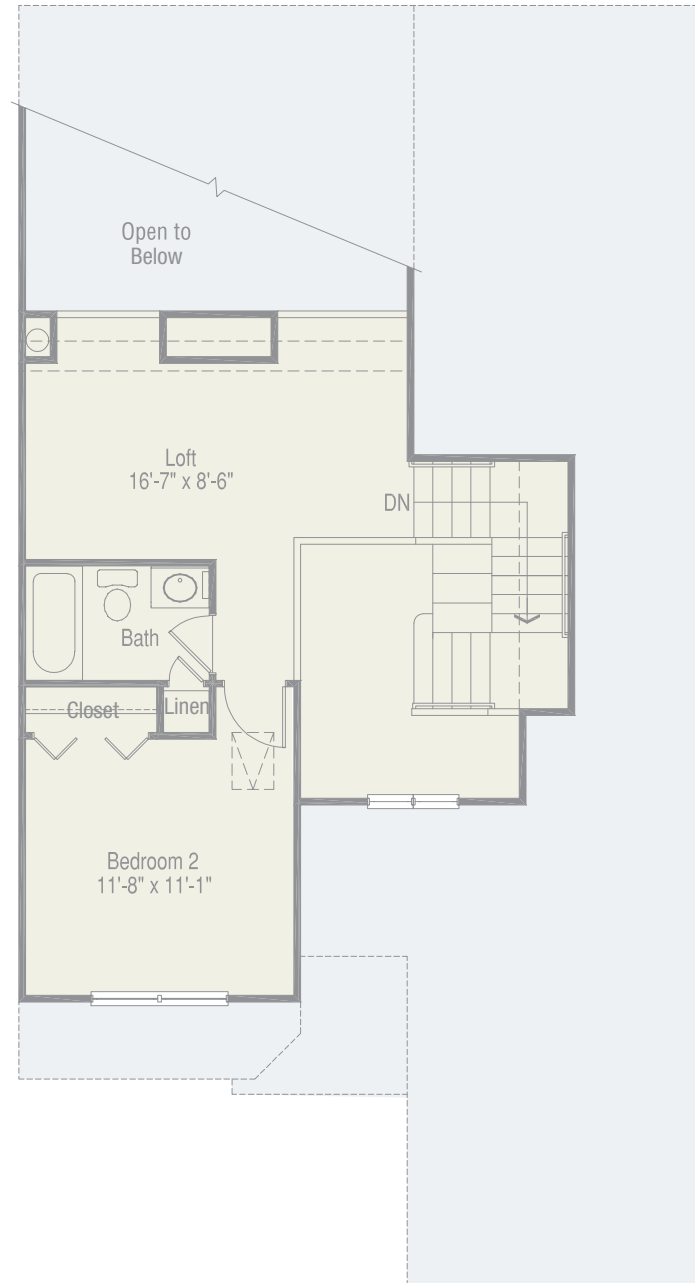
THE OSTERVILLE - FIRST FLOOR - 1,239 sq.ft.



THE OSTERVILLE
TOTAL SQ.FT. - 1,668

The dimensions, size, configuration, renderings and other information on this floor plan are subject to change without notice and are meant to be illustrative only. All dimensions and square feet are approximate, are determined by gross square feet and do not include unfinished areas in the basement, the garage or the deck.

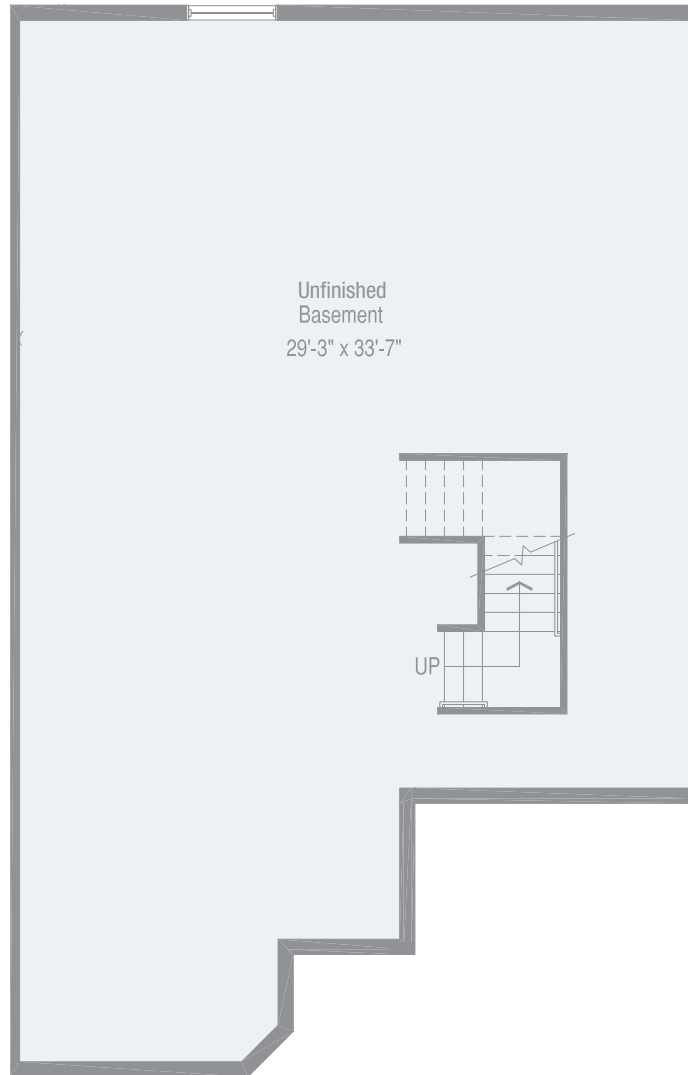
THE OSTERVILLE - SECOND FLOOR - 429 sq.ft.



THE OSTERVILLE
TOTAL SQ.FT. - 1,668

The dimensions, size, configuration, renderings and other information on this floor plan are subject to change without notice and are meant to be illustrative only. All dimensions and square feet are approximate, are determined by gross square feet and do not include unfinished areas in the basement, the garage or the deck.

THE OSTERVILLE - LOWER LEVEL



THE OSTERVILLE
TOTAL SQ.FT. - 1,668

The dimensions, size, configuration, renderings and other information on this floor plan are subject to change without notice and are meant to be illustrative only. All dimensions and square feet are approximate, are determined by gross square feet and do not include unfinished areas in the basement, the garage or the deck.