



# Region 1 RSC Meeting #10

February 9, 2021


Jenae Arceneaux, Planner

Heidi Stewart, Floodplain Manager

Randel Elliott, Grant Administrator

LOUISIANA  
**WATERSHED**  
INITIATIVE

working together for sustainability and resilience



Reduce flood risk, improve floodplain  
management throughout the state and  
maximize the natural and beneficial  
functions of floodplains

OUR MISSION



# AGENDA

1. Welcome
2. Minutes
3. Regional Updates
4. Governance Recommendation Discussion
5. Program Updates from OCD
6. Update on RSCs around the state
7. Closeout





# ROLL CALL

Bienville • Rodney Warren

Bossier • Butch Ford

Caddo • Ali Mustapha

Claiborne

DeSoto • Steve Brown

Grant • Morgan Briggs

Natchitoches • Rick Nowlin

Rapides • Matt Johns

Red River

Sabine • William Ruffin

Webster • Nick Cox

Winn

at-large • John Michael Moore

at-large • Lindsey Gouedy

at-large • Zazell Dudley



# Adopt Minutes

## January

- Sent out for review on 2/3/2021
- Adopt as-is
- Corrections or additional information needed



# Regional Updates

## Round 1 Projects

- 326 in state
- 8 in Region 1
- Deadline February 26

Applicant	Project Name
Bossier Parish Police Jury	Lucky Estates Drainage Project
City of Shreveport	Ockley Basin Storage
Grant Parish Police Jury	Additional Gates At Bayou Darrow
Parish of Natchitoches/City of Natchitoches/Natchitoches Levee & Drainage District/Cane River Waterway Commission	East Natchitoches Drainage Improvements
Rapides Parish Police Jury	Additional Gates At Bayou Rigolette
Town of Colfax	Sugarhouse Bayou Outfall
Town of Haughton, Bossier Parish	Foxskin Bayou Drainage Improvements
Webster Parish Police Jury	Dorcheat Road Bridge



# Regional Updates

## Project Inventory

- Over 100 postcards mailed out across the region.
- Please continue to add projects and share with other entities



MAKE SURE YOUR PROJECT IS INCLUDED IN THE  
**REGIONAL PROJECT INVENTORY**  
BEFORE IT'S TOO LATE

The U.S. Department of Housing and Urban Development allocated \$1.2 billion to the Louisiana Watershed Initiative for flood risk reduction and mitigation throughout the state of Louisiana.

We want YOUR voice to be heard and YOUR project to be included in Region 1's project inventory. It is important that you submit your project to ensure our region receives adequate grant funds to prevent future flooding.

For additional information on the project inventory and how to submit a project, please visit:  
[tinyurl.com/floodprojects](https://tinyurl.com/floodprojects)

  
THE COORDINATING & DEVELOPMENT CORPORATION

 LOUISIANA  
WATERSHED  
INITIATIVE  
working together for sustainability and resilience

  
Northwest Louisiana Council of Governments



# Regional Updates

## Workplan Updates

- Final Governance Recommendation due in June.
- Coalition formed by August

## Announcements from RSC Members

Tasks & Activities	Start to End
<b>RSC Orientation</b>	<b>Mar. to Jun.</b>
RSC Member Orientation (roles, responsibilities, RCBG Program goals)	Mar. 2020
Review and adoption of RSC meeting procedures/bylaws	Jun. 2020
Review and adoption of RSC Work Plan, meeting calendar	Jun. 2020
<b>Development of Watershed Project Inventory</b>	<b>Jun. to Oct.</b>
Discuss regional priorities	Jun. 2020
Regional Risk Presentation + Discussion	July & Aug 2020
Existing Governance Entities & Roles Presentation + Discussion	Sept.-Dec. 2020
Develop initial "Watershed Project Inventory"	Oct. 2020
<b>Regional Watershed Coalition Development</b>	<b>Sept. to Jun</b>
Webinar on existing watershed management responsibilities	Sept. 2020
Recommendations to Watershed Council & Governance Structure	Jan. 2021
Consider potential coalition models	Feb.- Mar. 2021
First phase of outreach meetings	Mar.-May 2021
Discussion and motion for proposed coalition structure	Spring 2021
Presentation of formal coalition structure & membership	Spring 2021
Final Governance Recommendations	Jun. 2021
Second phase of outreach meetings	Jul. 2021-May 2022
<b>Round 1 Project Funding Recommendations</b>	<b>Summer 2021</b>
Review of projects proposals for Round 1 Grant Programs	Summer
Finalize Round 1 funding recommendations	Sept. 2021
<b>RSC Final Deliverable and Summary</b>	<b>Deadline</b>
<b>Decisions and Recommendations</b>	
Watershed Inventory	Oct. 2020
Governance Structure Proposals	Jan. 2021
Round 1 Funding recommendations	Sept. 2021
<b>Conclusion and Next Steps</b>	
Watershed Council receives RSC recommendations	Jun. 2021
RSC Adopts Final Deliverable	Aug. 2021
RSC Disbands	Aug. 2021







# Governance Recommendation Discussion



# Governance Outcomes

## PROVISIONAL RECOMMENDATIONS

## OUTREACH AND ENGAGEMENT

## REFINED RECOMMENDATIONS

An iterative planning process requiring vetting and revisiting recommendations

### November – January

Make recommendations based on best available data, practices, expertise and information

### January – April

Engage parish leadership, stakeholders and the public to gather feedback

RESOURCE: O&E TOOLKIT

### May – June

Consider feedback from outreach and engagement and refine recommendations



# Provisional Governance Recommendation

Region 1 - Adopted January 12, 2021

- The coalition should be composed of primarily public representatives and include a technical advisory committee.
- The technical advisory committee members should not be a part of the watershed coalition, but should act as subject matter experts and make recommendations to the coalition.



# Provisional Governance Recommendation

## Other Regions Adopted

- The coalition should be primarily composed of public entity representatives. The coalition can establish technical or advisory committees that may appoint public members to assist in the committee's goals to report to the coalition. [Region 6]
- The current committee determined that a similar coalition structure is preferred. [Region 5]
- The coalition should be composed of an equal mix of public and private representatives. [Regions 2 , 3 & 8]
- ... include a technical advisory committee. The technical advisory committee members should not be a part of the watershed coalition but should act as subject matter experts and make recommendations to the coalitions. [Region 4]
- The Watershed Body should be composed of a mix of technical experts, elected officials (or their appointees), and citizens/organizations outside of government entities who represent citizens. [Region 7]



# Region 1 Potential Coalition Structure

## Watershed Coalition

*Votes on recommendations provided by committees.*

- Parish President, Parish Administrator or their designee, one per parish [12]  
Bienville, Bossier, Caddo, Claiborne, DeSoto, Grant, Natchitoches, Rapides, Red River, Sabine, Webster, Winn
- At-Large members, representing large regional entities [1,3,5]  
Chair of TAC, Sparta Ground Water Conservation District Commission, The Port of Caddo Bossier, Red River Compact, Red River Waterway Commission etc.
- Non-Voting Members [?]  
U.S. Army Corps of Engineers, LWI, DOTD

Voting Body  
(15 Members)

## Technical Advisory Committee

*Identifies opportunities and challenges. Makes recommendations to the voting body.*

- Levee Boards and Drainage Districts [5]  
Bossier, Caddo, Natchitoches, Nineteenth, Red River
- Representatives of municipalities [4, more?]  
Shreveport, Bossier, Alexandria, Natchitoches (population 15,000+)
- Other Government Agencies [?]  
U.S. Army Corps of Engineers, LWI, DOTD
- Out of State Representatives [2, 3]  
East Texas, Southern Arkansas, Southeast Oklahoma?
- Community Organization Reps [1-5?]  
Ex. Sparta Ground Water Conservation District Commission, The Port of Caddo Bossier, Red River Compact, Red River Waterway Commission, etc.

Technical  
Advisory  
Committee

Regional  
Coordinating Entity  
(CDC & NLCOG)

- Coordinates all regional activities
- Assists in the development of recommendations to voting membership

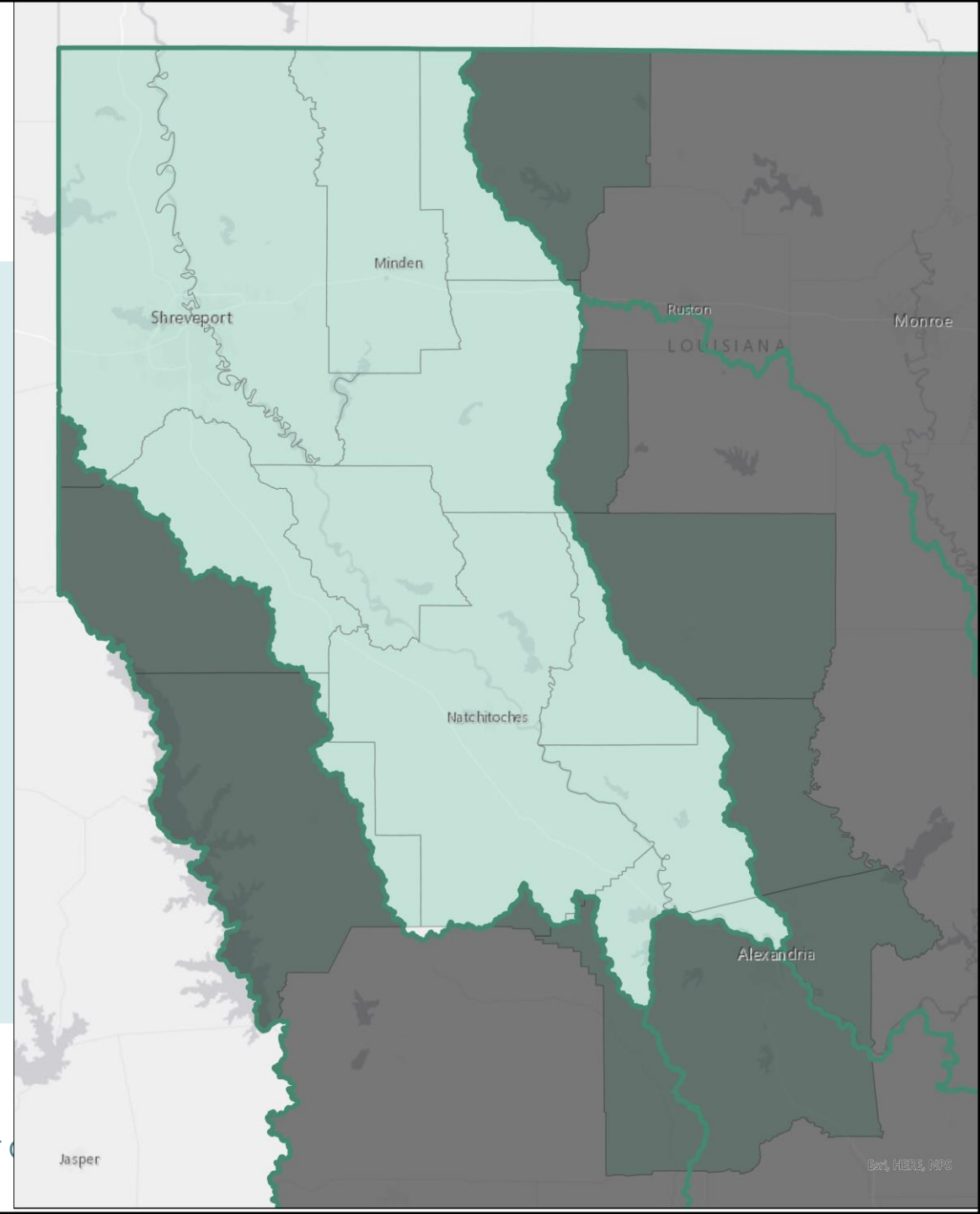


# Region 1 Parishes

Currently the RSC 1 parish = 1 vote

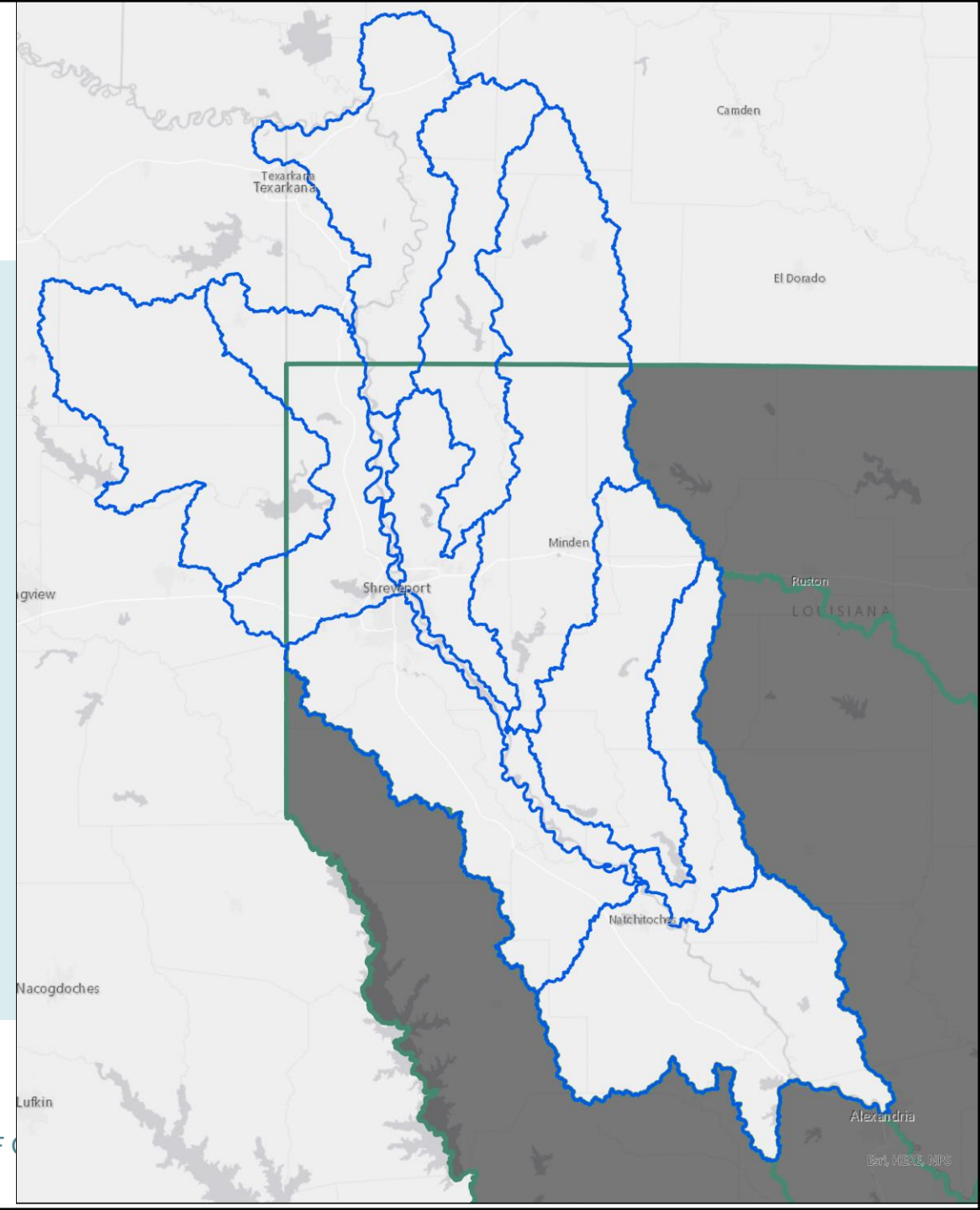
12 parishes and 3 at-large members

- 5 parishes only in region 1
- 6 parishes in two regions
- 1 parish in four regions



# Region 1 Sub-basins

11 HUC 8 sub-basins



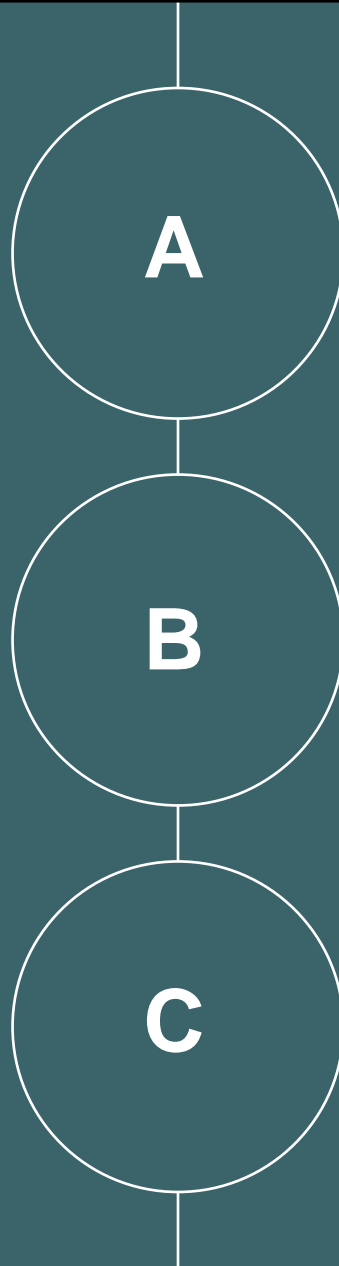
# Regional Demographics

Sq. Miles	Population		12 parishes	Parishes & Municipalities			
				Pop > 20k		Pop > 10k	
10.3%	2.3%	<b>Bienville</b>	8.3%		7.1%		6.3%
13.7%	25.3%	<b>Bossier</b>	8.3%	& Bossier City	14.3%		12.5%
14.3%	47.0%	<b>Caddo</b>	8.3%	& Shreveport	14.3%		12.5%
4.1%	0.7%	<b>Claiborne</b>	8.3%		7.1%		6.3%
7.0%	3.0%	<b>DeSoto</b>	8.3%		7.1%		6.3%
5.5%	2.1%	<b>Grant</b>	8.3%		7.1%		6.3%
20.1%	7.6%	<b>Natchitoches</b>	8.3%		7.1%	& Natchitoches	12.5%
2.7%	1.8%	<b>Rapides</b>	8.3%		7.1%		6.3%
6.4%	1.7%	<b>Red River</b>	8.3%		7.1%		6.3%
2.0%	0.2%	<b>Sabine</b>	8.3%		7.1%		6.3%
9.7%	7.6%	<b>Webster</b>	8.3%		7.1%	& Minden	12.5%
4.2%	0.7%	<b>Winn</b>	8.3%		7.1%		6.3%
			12		14		16





# RSC Member Poll: Coalition Membership



- Each parish has one representative.
- Each parish has one representative and each municipality with a designated population has and additional representative.
- Another method of weighting votes and membership.



# Coalition Membership

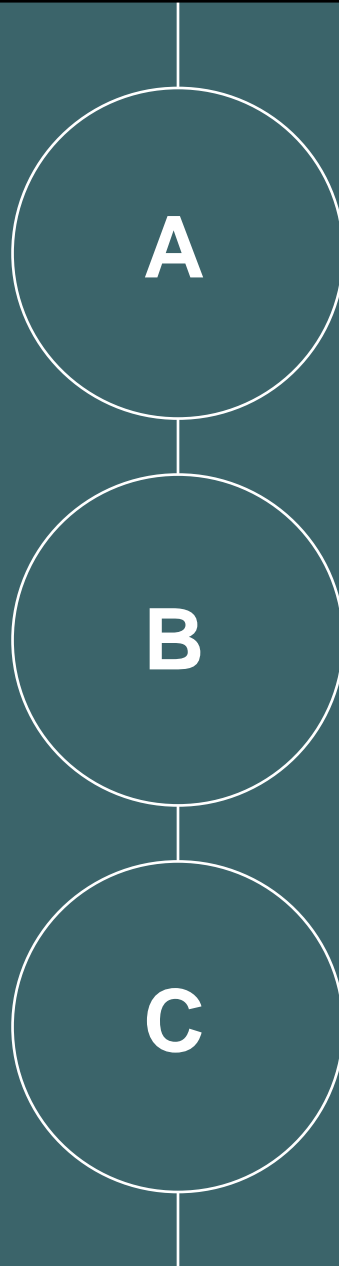
The current RSC contains 3 members-at-large appointed by CDC.

Options to consider:

- 1, 3, or 5 members-at-large
- Organizations specified in bylaws or designated by CDC
  - Sparta Ground Water Conservation District Commission, The Port of Caddo Bossier, Red River Compact, Red River Waterway Commission, the chair of the technical advisory committee, etc.
  - U.S. Army Corps of Engineers, LWI, DOTD, etc (as voting or non-voting members)
  - Out of state members: East Texas, Southern Arkansas (as voting or non-voting members)



RSC  
Member  
Poll:  
Coalition  
Membership  
(members-at-large)



- Designate specific entities for members-at-large.
- Simply list possible members. (Including but not limited to...)
- No preference.





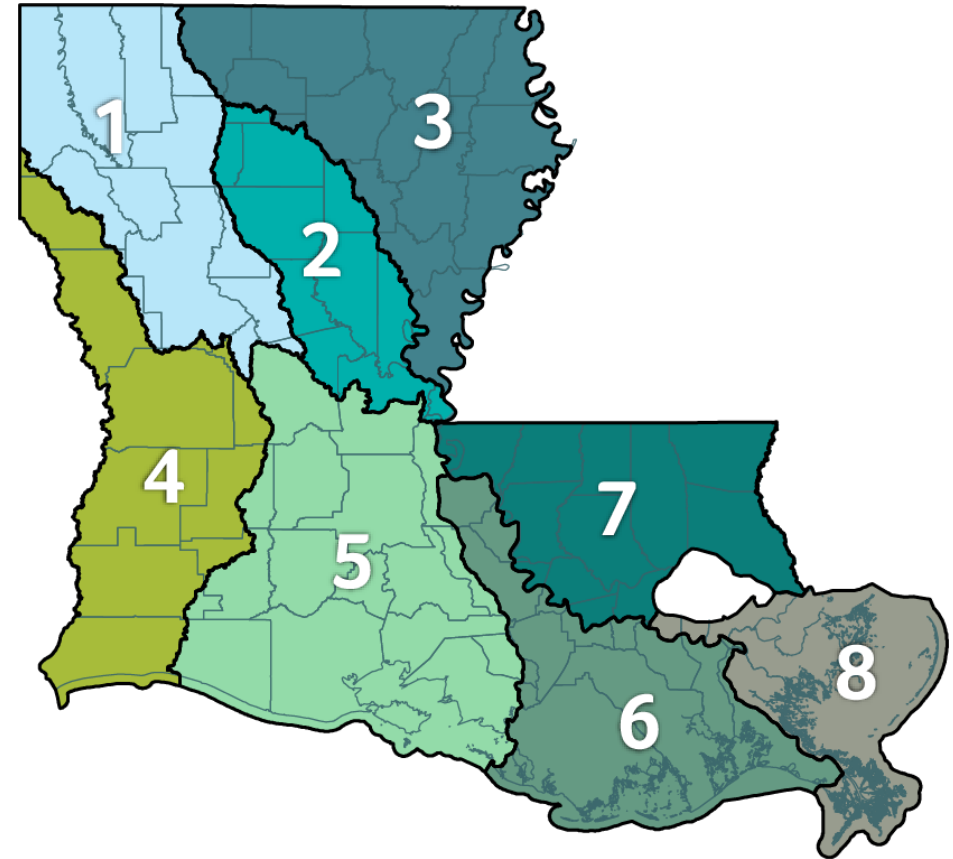
## Program Updates from OCD



# Update on RSCs around the state

All 8 regions adopted their own provisional governance recommendations in January.

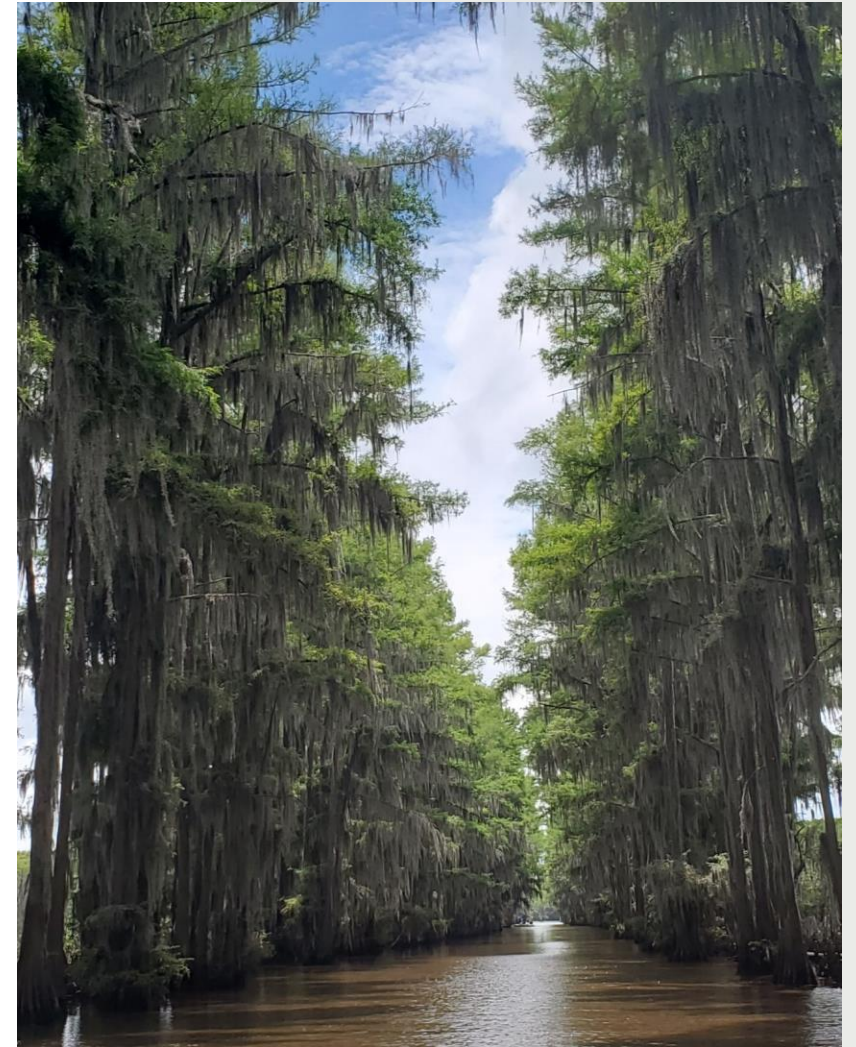
- Staff has copies of each if there are any specific questions or if you would like to review any.



# Closeout

- Q & A
- Public Comment
- Adjourn

Join us next time on March 9, 2021.





# Contact Information

Jenae Arceneaux, Planner

318.632.2022 [jarceneaux@cdconline.org](mailto:jarceneaux@cdconline.org)

Heidi Stewart, Floodplain Manager

318.841.5950 [heidi.stewart@nlcog.org](mailto:heidi.stewart@nlcog.org)

Randel Elliott, Grant Administrator

318.632.2022 [relliott@cdconline.org](mailto:relliott@cdconline.org)

LOUISIANA  
**WATERSHED**  
INITIATIVE

working together for sustainability and resilience